



## Excavator Long Arm with Wood Grab

### Basic Information

- Place of Origin: Guangdong Province, China
- Brand Name: Kaiping Zhonghe Machinery Manufacturing Co. Ltd
- Certification: CE, Patents, ISO9001
- Model Number: JCB0012
- Minimum Order Quantity: 1 set / piece
- Price: USD 199.00-USD8999.00
- Packaging Details: Bubble / Wooden Cases / Others as you request
- Delivery Time: 5-25/works
- Payment Terms: T/T, L/C
- Supply Ability: 6 sets per week



### Product Specification

- Material: Q355B Or Q690D Or As You Request
- Customized Service: Yes
- Suitable Excavator Model: 10 Ton- 200 Ton Excavator
- Color: Red, Yellow, Blue White Customized
- Length(m): 6m - 35m
- Bucket Capacity: 1cbm 1.5cbm 2cbm



### More Images



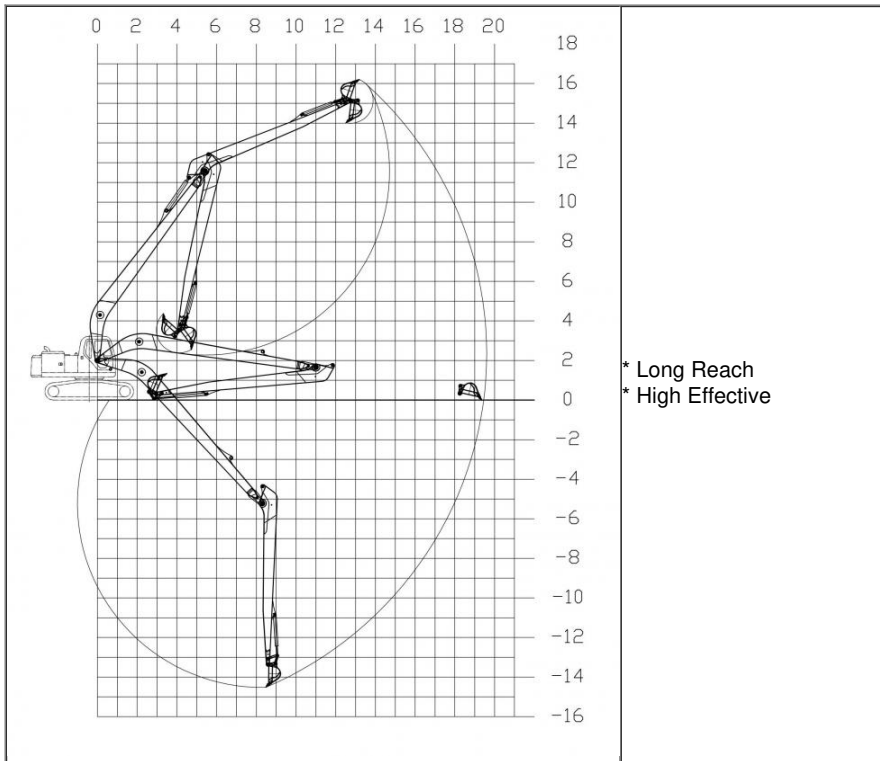
Our Product Introduction

for more products please visit us on [excavatorlongarm.com](http://excavatorlongarm.com)

## Product Description

### Breaking Limits, Mastering the Scope

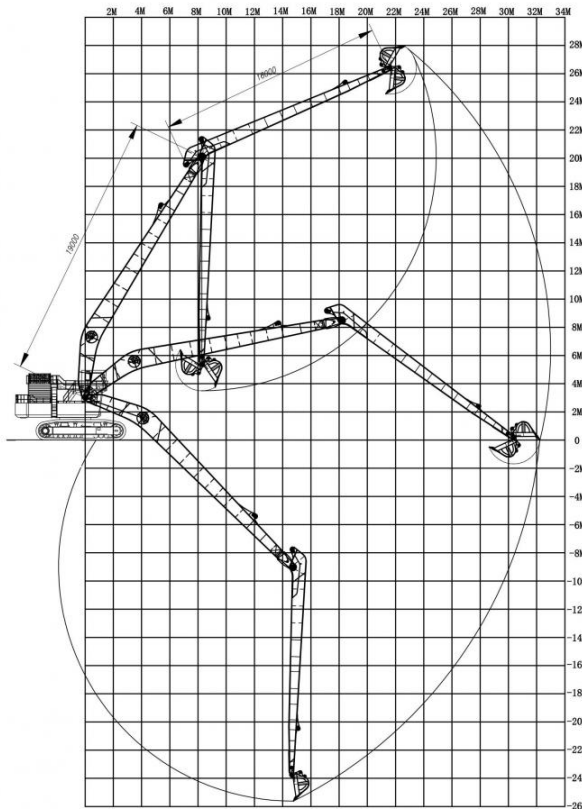
Our Excavator Long Arm is the ultimate solution designed for heavy equipment operators pursuing superior performance. It is not merely a simple attachment but a comprehensive upgrade to the capabilities of your existing excavator, transforming an ordinary machine into specialized equipment capable of handling the most severe working conditions.



Our Product Introduction

for more products please visit us on [excavatorlongarm.com](http://excavatorlongarm.com)

## 35M Long Reach Boom for Hitachi 1200



\* Deep Digging Depth  
\* Multiple Functions

### Core Advantages

#### Unparalleled Working Radius

The core value of this Excavator Long Arm lies in its exceptional reach. It significantly expands your operational range, allowing you to easily access materials at a distance. Whether performing deep foundation pit excavation, dredging rivers, or shaping high slopes from a safe distance, it effectively reduces fuel consumption and equipment wear by minimizing frequent machine movements, greatly improving operational efficiency.

#### Precision Grappling Born for Forestry

When this Excavator Long Arm is combined with our professional Wood Grab, it becomes a powerful tool in the fields of forestry and material handling. Its robust hydraulic system and optimized geometry ensure excellent controllability and clamping force even during long-distance operations. Whether sorting logs, loading trucks, or clearing sites, it achieves precision, efficiency, and safety.

#### Built Tough, Fearless of Challenges

We understand the complexity of working environments, which is why this Excavator Long Arm is manufactured from high-strength, wear-resistant special steel. Its structure has undergone finite element analysis and rigorous testing to ensure it remains indestructible when withstanding immense pressure and impact, providing you with lasting reliability and outstanding durability.



**Three Layers with Four Passes Welding**

Strong weldings ensure the boom end not easy cracking.



**Perfect Middle Sleeve**

The middle sleeve of big boom is processed as a whole, which is more firm and beautiful



**Reinforcement of stress-bearing parts**

Prolonger the service life-span & Not easy cracking



**Premium Cylinder**

Using high quality cylinder ensure no oil leakage and longer service life-span



**Seamless Pipeline**

Can bear huge stress and no oil leakage



**Centralized lubrication system**

Easy for later maintenance



**Why chose Our Excavator Long Arm?**

### Front end design of arm

Ours



The side panel at the front end of our arm is thickened. The force at this position is relatively large, so thickening of this position is very necessary.

Others



Other manufacturers do not thicken this position.

VS

### Design of the rear seat plate of the arm

Ours



Our plate is thickened because this position is connected to the boom cylinder and is the most stressed part of the arm, so we thicken the plate to avoid cracking at this position.

Others



Other manufacturers do not reinforce and thicken this location. After the excavator has been working for a long time, this location is prone to quality problems.

VS

### Design of arm side panel

Ours



VS

Others



The thick plate and thin plate of our arm side plate are directly connected by diagonal connection. This design can effectively avoid excessive stress concentration and cracking at the interface.

Other manufacturers use straight-line docking at this location, which is not reasonable enough, with excessively concentrated stress and prone to cracking.

### Butt joint design of arm upper cover

Ours



VS

Others



The upper cover of our arm is generally not butt-jointed. Even if it is butt-jointed, we will stick a butt-jointed plate inside the cover to ensure that the welding can be fully melted. Our butt-jointed position is generally selected in the middle of the ear seat, so that there will be no problems.

Other manufacturers dock at other locations, which may cause cracking at the docking interface later.

#### Contact Us!

Whatsapp: [wa.me/+8613822325403](https://wa.me/+8613822325403)

Email: [aria@excavatorlongarm.com](mailto:aria@excavatorlongarm.com)

Website link: [www.excavatorlongarm.com](http://www.excavatorlongarm.com)



Jiangmen Kaiping Zhonghe Machinery Manufacturing Co., Ltd

+86 13822325403

[aria@excavatorlongarm.com](mailto:aria@excavatorlongarm.com)

[excavatorlongarm.com](http://excavatorlongarm.com)

9 Huancui West Road, Cuishanhu New Area, Kaiping City, Guangdong Province, China