



High Performance Excavator Rock Bucket for Tough Jobs

Our Product Introduction

for more products please visit us on excavatorlongarm.com

Basic Information

- Place of Origin: Guangdong Province, China
- Brand Name: Kaiping Zhonghe Machinery Manufacturing Co. Ltd
- Certification: CE, Patents, ISO9001
- Model Number: RockBucket009
- Minimum Order Quantity: 1 piece
- Price: USD1200/pieces
- Packaging Details: wood case
- Payment Terms: T/T
- Supply Ability: 50 Piece/Pieces per Month

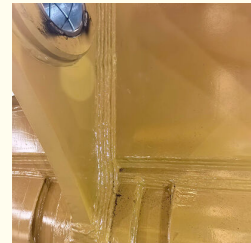


Product Specification

- Type: Rock Buclet
- Oem: Support
- Warranty: 3 Months
- Weight: 100kgs - 1500kgs
- Material: Q355B+NM400
- Bucket Capacity: 0.25-5m3, Or As Per Your Request
- Application: 6-120ton Excavator
- Condition: 100% New Product
- After-sales Service Provided: Technical Support
- Color: Customized



More Images



Product Description

Our Product

Excavator Rock Bucket



Rock Bucket Customization

- *Applicable for all brand excavator.
- *Color, Capacity, material can do according to you.
- *Made of Q355B and NM400 steel with good strength and rigidity.





Rock Bucket



HD rock bucket is applied for heavy duty occasions, especially for mining and quarry.

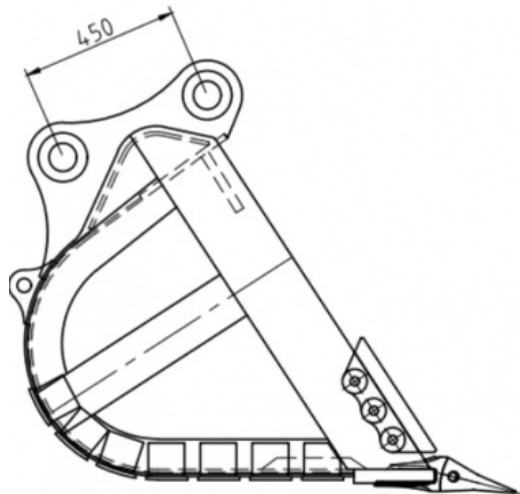
Diferent kinds of rock buckets



ZHONGHE Excavator Buckets are designed for heavy-duty applications such as road construction, mining and quarrying. Manufactured with Hardox500 and Q355B. The base has been reinforced and the bar protector has been improved.

ZHONGHE Heavy Duty Rock Buckets add extra armor on the heel edge for extended life in highly abrasive applications. Bucket teeth and tooth seats are made of high-quality products in the industry, which makes the products have high reliability, better digging performance, and more economical efficiency; reduce the time and cost required for maintenance, greatly improve work efficiency and win the construction period. It is suitable for the excavation of hard rock, sub-hard rock and weathered stone mixed in the soil; the loading of hard rock and blasted ore and other heavy operations.

Improve your productivity with our **Heavy Duty Rock Buckets** (also konwn as Digging Buckets or Heavy Duty Buckets). Our rock buckets are unique un their extensive wear protection, high penetration teeth, fully integrated head mounts and dual radius design to ensure high strength capability and maximum attachment life. The new and improved design of our rock buckets is overall stronger and safer than other buckets on the market.



ZHONGHE Advantages

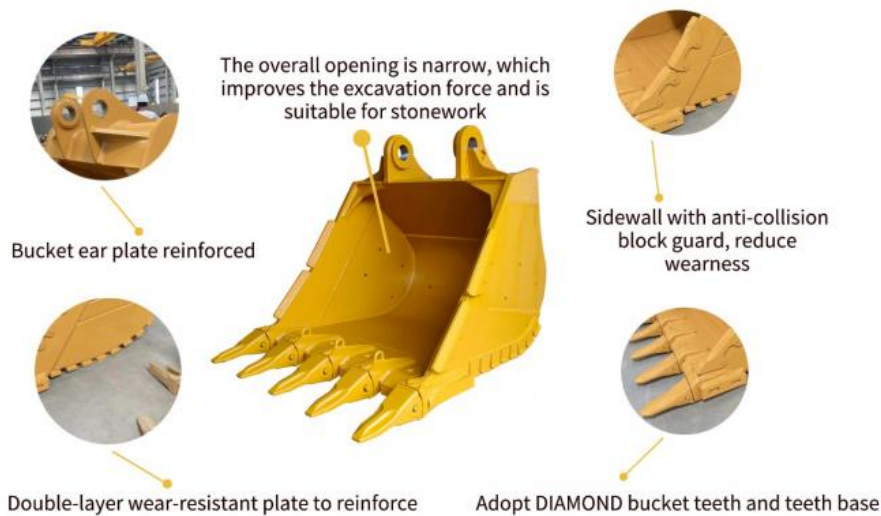
1. Fashionable style
2. Professional Team
3. Quality control
4. Moderate price
5. CE certification
6. Promptly answer
7. Patented technology
8. Enrich production experience

Excavator Rock Bucket			
Capacity / cbm	Model / ton	Weight / kgs	Material
0.5	10-15	600	Q355B Material
0.6	12-15	750	
0.7	15-18	790	
0.8	18-20	860	
1	20	1050	
1.2	20-22	1200	
1.3	22-25	1300	
1.4	30	1450	
1.5	30-35	1600	
1.6		1850	
1.7		1900	

PRODUCT DESCRIPTION



Advantages of Rock Bucket



Our company can design and simulate by using 2D and 3D computer software according to the customer's requirements and working conditions to solve the stress problem and produce buckets of various brands of excavator.

Materials such as Q355B, NM400, and Hardox500 are available, and the width, depth, opening angle, color, etc. of the bucket can be customized, with specifications ranging from 0.1m³-12m³.

PIN QUALITY

Made of 1045 high-quality carbon steel that has undergone quenching and tempering processes, ensuring durability.

PERFORMANCE

The Heavy Duty Rock Bucket's superior design includes a fluid shape that enhances bucket-loading capabilities and maximises production, as well as increased heel clearance that reduces drag factor and mitigates abrasive wear without compromising on force and digging ability.

VERSATILITY

The heavy-duty design and fluid shape allow for easier bucket-filling capabilities and enhanced bucket-loading performance, with external wear resistance, making it suitable for a wide range of tasks.

DURABILITY

The heavy-duty construction of the bucket, made from high-tensile material with extensive wear production, ensures its durability and longevity, making it suitable for use in heavy-duty applications. Overall, our rock bucket is a reliable and versatile tool that can be used in a variety of projects.





COMPANY PROFILE



Kaiping Zhonghe Machinery Manufacturing Co., Ltd.

Founded in 2018, Zhonghe heavy industry independently develops and produces construction machinery parts such as excavator lengthening arm, mountain pulling arm, two-stage telescopic arm, sliding arm, three-stage telescopic arm, three-stage demolition arm, rock arm, tunnel arm, bucket, pile driving arm, wood grabber, steel grabber and scarifier. It is widely used in weathered stone crushing, subway construction, forestry logging, municipal pipeline engineering, river dredging, building demolition, Larsen steel sheet pile driving and pulling, pile foundation engineering, resource recovery and other engineering industries. The products are sold in more than 40 countries and regions. Provide one-year after-sales service with after-sales warranty and deliver on time. 24-hour online service can provide OEM production.





14000m² Workshop

We have more than 14000m² steel structure workshop with lots of high precision processing equipments.



R&D Team

We use precision drawing software to achieve the max working range under the premise of safe operation.



Skillful Workers

There are more than 60 skillful staffs, 30 welding workers with over 5 years welding experience.



Customized

1. Fit all brand.
2. Color, length, material are customized.
3. Extra pipeline can be added.



Prompt Lead Time

1. Our lead time is 7-15 days.
2. Our annual output of excavator boom arms can reach 600 sets.



100% Service

1. Online support within 24 hours.
2. Appointment video technical support.

EXHIBITIONS



PRODUCT CATEGORY



Long Reach Boom



Sliding Arm



Two-section Telescopic Arm



Three-section Telescopic Arm



Pile Driving Arm



Tunnel Arm

PRODUCT CATEGORY



Rock Bucket



Standard Bucket



Tilt Bucket



Ditch Cleaning Bucket



Skeleton Bucket



Rock Ripper

CERTIFICATIONS



APPLICABLE BRANDS



- KOMATSU** **CAT** **HITACHI** **VOLVO** **SUMITOMO**
KOBELCO **DOOSAN** **CASE** **KATO** **HYUNDAI**
JCB **LIEBHERR** **ATLAS** **TEREX** **Kubota** **YANMAR** **TAIKEUCHI** **IHISCE**
SANY **SDLG** **山东路工** **山重建机** **STRONG** **JCM** **SHANTUI** **LOVOL** **福田雷沃重工** **XGMA** **厦工** **LuGong** **柳工**
LISHIDE **力士德** **ZOOMLION** **XCMG** **LONKING** **龙工** **SUNWARD** **山河智能**

PRODUCTION ADVANTAGES



Our factory has a complete range of production equipment, which is conducive to the production of our products, good quality and ensures product accuracy.

1. Panel is cut by CNC plasma machine with less deformation.
2. Tolerance within 5-10um, ensure the accuracy of hole.
3. Environmentally friendly verified sparying room.
4. GMAW-Gas Metal Arc-Welding.
5. Plasma cutting machines, boring machines, beveling machines, bending machines, etc. ensure accuracy.



Large double-sided floor boring machine



CNC plasma cutting machine



Automatic edge milling machine



Environmentally friendly spary booth

ZHONGHE triple quality control system

The first system is the technical design drawing review mechanism,

The second system is the semi-finished product review mechanism,

(each process has a detection testing for the previous process)

The third system is the finished product testing.

(Before painting, the overall inspection is carried out to check whether the design size matches the welding size, and whether the installation size meets the design requirement.)

To sum up, every single ZHONGHE product has been passed the above three-stage inspection system to ensure that is qualified before shipping.

PRODUCTION PROCESS



Ingenious craftsmanship / Quality assurance

Zhonghe Machinery Production Steps



Draw design



Manufacturing



Plate cutting



Machining



Mechanical beveling



Riveting, bending



Welding



Gas shielded welding



Pipeline layout



Spray paint



Test



Arrange shipment

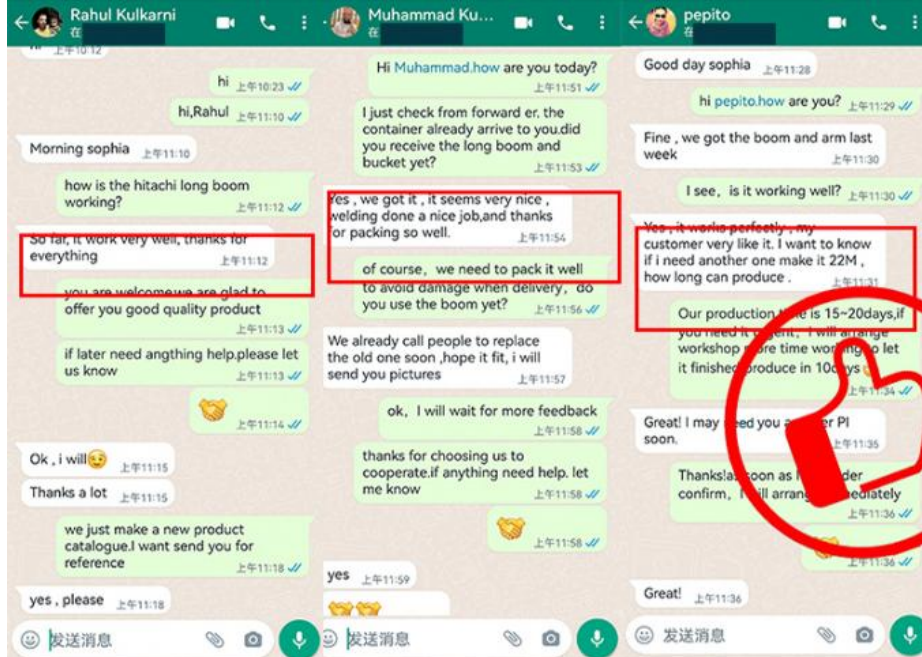
SHIPPING & PACKAGE



Package
Bubble bag packing for most products;
Wooden case for little products, like buckets;
Iron frame support fro boom arms.
The accessories and package of excavator
long boom arm are subjected to our final
confirmation.



Our products have been sold to more than 60 countries, and our transportation methods include sea transportation, land transportation, and air transportation. Our packaging is wooden box packaging or stretch film packaging. The goods will be packed before shipment and then loaded into the container to ensure the safety of the goods.



**1. Who are we?**

We are based in Guangdong, China, start from 2018, sell to Southeast Asia(40.00%), Mid East(10.00%), North America(10.00%), South Asia(8.00%), Eastern Europe(8.00%), Oceania(8.00%), Eastern Asia(5.00%), Africa(5.00%), South America(4.00%), Northern Europe(2.00%). There are total about 51-100 people in our office.

2. How can we guarantee quality?

Always a pre-production sample before mass production;
Always final inspection before shipment;

3. What can you buy from us?

Excavator Long Reach Boom, Excavator Telescopic Arm, Excavator Demolition Arm, Excavator Grapple, Excavator Bucket

4. Why should you buy from us not from other suppliers?

With more than 60 employees, it has its own unique research and development team in more than 10000 square meters of steel structure standardized plant. The annual production of various arms is up to 600 sets, and various buckets are 6000 pieces.

5. What services can we provide?

Accepted Delivery Terms: FOB, CIF, EXW, CIP;
Accepted Payment Currency: USD, CNY;
Accepted Payment Type: T/T;



Jiangmen Kaiping Zhonghe Machinery Manufacturing Co., Ltd



+86 13822325403



aria@excavatorlongarm.com



excavatorlongarm.com

9 Huancui West Road, Cuishanhu New Area, Kaiping City, Guangdong Province, China