



## Reinforced Excavator Rock Bucket with Teeth for Quarry

Our Product Introduction

for more products please visit us on [excavatorlongarm.com](http://excavatorlongarm.com)

### Basic Information

- Place of Origin: Guangdong Province, China
- Brand Name: Kaiping Zhonghe Machinery Manufacturing Co. Ltd
- Certification: CE, Patents, ISO9001
- Model Number: YSD001
- Minimum Order Quantity: 1 piece
- Price: \$1750/pieces
- Packaging Details: wood case
- Payment Terms: T/T
- Supply Ability: 50 Piece/Pieces per Month



### Product Specification

- Brand: Zhonghe
- Type: Rock Buclet
- Material: Q355B+NM400
- After-sales Service Provided: Video Technical Support
- Bucket Capacity: 1-1.8m3, or As Per Your Request
- Color: Customized
- Warranty: 3 Months
- Condition: 100% New Product
- Application: 20-38t Excavator
- Weight: 1600kg
- Oem: Support



### More Images





# Excavator Rock Bucket

**Rock Bucket Customization**

- \*Applicable for all brand excavator.
- \*Color, Capacity, material can do according to you.
- \*Made of Q355B and NM400 steel with good strength and rigidity.

## PRODUCT DESCRIPTION

### Rock Bucket



HD rock bucket is applied for heavy duty occasions, especially for mining and quarry.

#### Diferent kinds of rock buckets



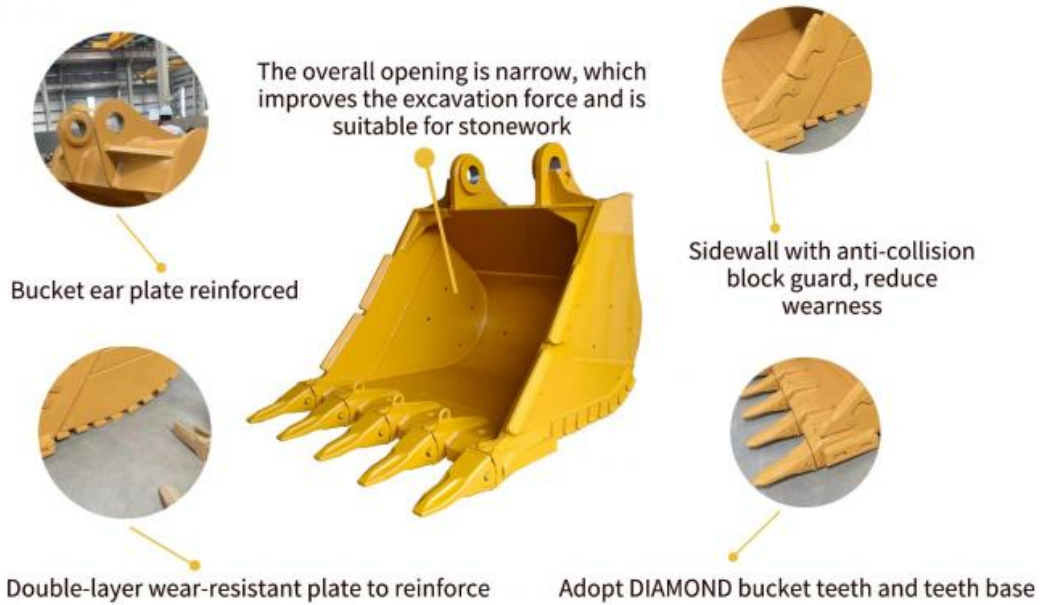
Excavator Rock Bucket			
Capacity / cbm	Model / ton	Weight / kgs	Material
0.5	10-15	600	NM400, Q690D, Q355B Material
0.6	12-15	750	
0.7	15-18	790	
0.8	18-20	860	
1	20	1050	
1.2	20-22	1200	
1.3	22-25	1300	
1.4	30	1450	
1.5		1600	

1.6	30-35	1850
1.7		1900

## PRODUCT DESCRIPTION



### Advantages of Rock Bucket



#### **PIN QUALITY**

Premium Material: Crafted from high-grade 1045 carbon steel.

Heat Treatment: Undergoes rigorous quenching and tempering processes to ensure exceptional strength, toughness, and long-lasting durability.

#### **PERFORMANCE**

Optimized Geometry: Features a streamlined, fluid shape that enhances material flow for superior bucket loading and maximizes production efficiency.

Reduced Wear: Engineered with increased heel clearance to minimize drag and abrasive wear, delivering maximum breakout force and digging ability without compromise.

#### **VERSATILITY**

Enhanced Efficiency: The heavy-duty design combined with its fluid profile allows for rapid, easy filling and improved loading performance.

Broad Application: Built with external wear resistance, making it a reliable choice for a diverse range of excavation tasks and job site conditions.

#### **DURABILITY**

Robust Construction: Manufactured from high-tensile steel with extensive wear protection (liners and plates) to withstand the harshest environments.

Long Service Life: Designed specifically for heavy-duty applications, ensuring reliability and longevity even in the most demanding projects.





## COMPANY PROFILE



### Kaiping Zhonghe Machinery Manufacturing Co., Ltd.

Founded in 2018, Zhonghe heavy industry independently develops and produces construction machinery parts such as excavator lengthening arm, mountain pulling arm, two-stage telescopic arm, sliding arm, three-stage telescopic arm, three-stage demolition arm, rock arm, tunnel arm, bucket, pile driving arm, wood grabber, steel grabber and scarifier. It is widely used in weathered stone crushing, subway construction, forestry logging, municipal pipeline engineering, river dredging, building demolition, Larsen steel sheet pile driving and pulling, pile foundation engineering, resource recovery and other engineering industries. The products are sold in more than 40 countries and regions. Provide one-year after-sales service with after-sales warranty and deliver on time. 24-hour online service can provide OEM production.





### 14000m<sup>2</sup> Workshop

We have more than 14000m<sup>2</sup> steel structure workshop with lots of high precision processing equipments.



### R&D Team

We use precision drawing software to achieve the max working range under the premise of safe operation.



### Skillful Workers

There are more than 60 skillful staffs, 30 welding workers with over 5 years welding experience.



### Customized

1. Fit all brand.
2. Color, length, material are customized.
3. Extra pipeline can be added.



### Prompt Lead Time

1. Our lead time is 7-15 days.
2. Our annual output of excavator boom arms can reach 600 sets.



### 100% Service

1. Online support within 24 hours.
2. Appointment video technical support.

## EXHIBITIONS



## PRODUCT CATEGORY



Long Reach Boom



Sliding Arm



Two-section Telescopic Arm



Three-section Telescopic Arm



Pile Driving Arm



Tunnel Arm

## PRODUCT CATEGORY



Rock Bucket



Standard Bucket



Tilt Bucket



Ditch Cleaning Bucket



Skeleton Bucket



Rock Ripper

# CERTIFICATIONS



# APPLICABLE BRANDS



# PRODUCTION ADVANTAGES



Our factory has a complete range of production equipment, which is conducive to the production of our products, good quality and ensures product accuracy.

1. Panel is cut by CNC plasma machine with less deformation.
2. Tolerance within 5-10um, ensure the accuracy of hole.
3. Environmentally friendly verified sparying room.
4. GMAW-Gas Metal Acr-Welding.
5. Plasma cutting machines, boring machines, beveling machines, bending machines, etc. ensure accuracy.



Large double-sided floor boring machine



CNC plasma cutting machine



Automatic edge milling machine



Environmentally friendly spary booth

## ZHONGHE triple quality control system

The first system is the technical design drawing review mechanism,  
 The second system is the semi-finished product review mechanism,  
 (each process has a detection testing for the previous process)  
 The third system is the finished product testing.

(Before painting, the overall inspection is carried out to check whether the design size matches the welding size, and whether the installation size meets the design requirement.)

To sum up, every single ZHONGHE product has been passed the above three-stage inspection system to ensure that is qualified before shipping.

# PRODUCTION PROCESS



Ingenious craftsmanship / Quality assurance

### Zhonghe Machinery Production Steps



Draw design



Manufacturing



Plate cutting



Machining



Mechanical beveling



Riveting, bending



Welding



Gas shielded welding



Pipeline layout



Spray paint



Test



Arrange shipment

# SHIPPING & PACKAGE

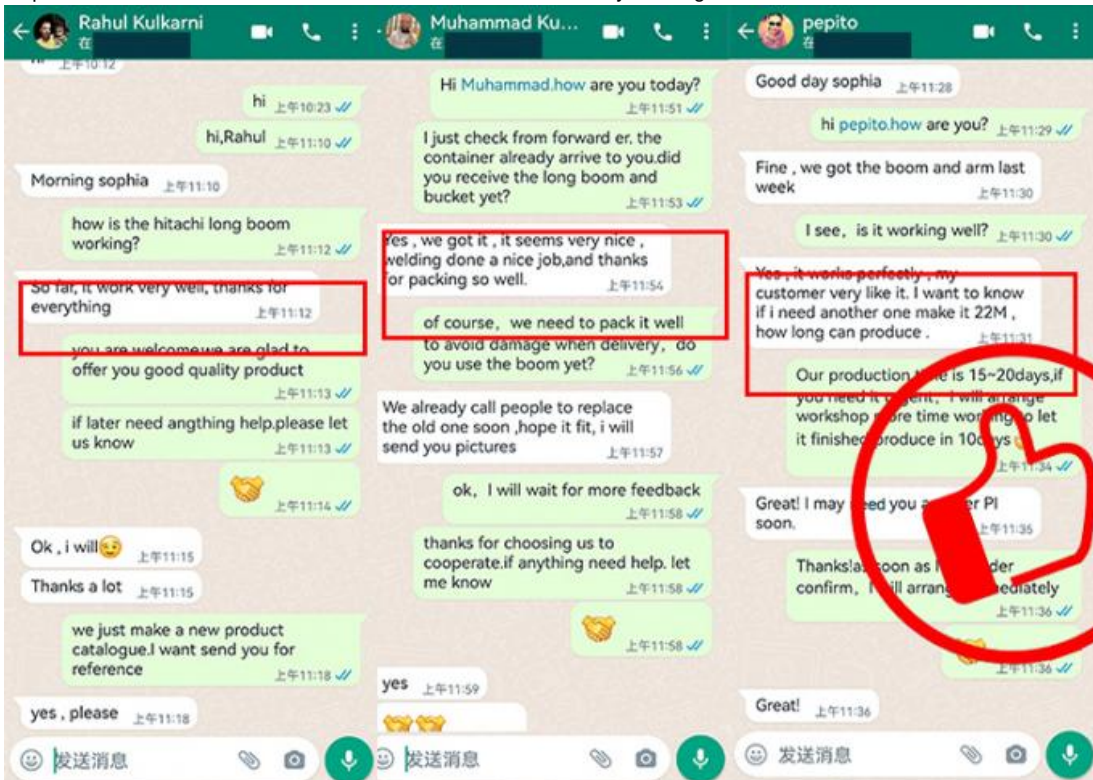


## Package

Bubble bag packing for most products;  
Wooden case for little products, like buckets;  
Iron frame support for boom arms.  
The accessories and package of excavator long boom arm are subjected to our final confirmation.



Our products have been sold to more than 60 countries, and our transportation methods include sea transportation, land transportation, and air transportation. Our packaging is wooden box packaging or stretch film packaging. The goods will be packed before shipment and then loaded into the container to ensure the safety of the goods.



**1. Who are we?**

We are based in Guangdong, China, start from 2018, sell to Southeast Asia(40.00%), Mid East(10.00%), North America(10.00%), South Asia(8.00%), Eastern Europe(8.00%), Oceania(8.00%), Eastern Asia(5.00%), Africa(5.00%), South America(4.00%), Northern Europe(2.00%). There are total about 51-100 people in our office.

**2. How can we guarantee quality?**

Always a pre-production sample before mass production;

Always final Inspection before shipment;

**3. What can you buy from us?**

Excavator Long Reach Boom, Excavator Telescopic Arm, Excavator Demolition Arm, Excavator Grapple, Excavator Bucket

**4. Why should you buy from us not from other suppliers?**

With more than 60 employees, it has its own unique research and development team in more than 10000 square meters of steel structure standardized plant. The annual production of various arms is up to 600 sets, and various buckets are 6000 pieces.

**5. What services can we provide?**

Accepted Delivery Terms: FOB, CIF, EXW, CIP;

Accepted Payment Currency: USD, CNY;

Accepted Payment Type: T/T;



**Jiangmen Kaiping Zhonghe Machinery Manufacturing Co., Ltd**



+86 13822325403



aria@excavatorlongarm.com



excavatorlongarm.com

9 Huancui West Road, Cuishanhu New Area, Kaiping City, Guangdong Province, China