



Heavy Duty Excavator Rock Bucket for Hard Rock Digging

Basic Information

- Place of Origin: Guangdong Province, China
- Brand Name: Zhonghe Machinery
- Certification: CE, Patents, ISO9001
- Model Number: RB003
- Minimum Order Quantity: 1 set / piece
- Price: USD 139.00-USD3999.00
- Packaging Details: bubble / wooden case
- Delivery Time: 6-35/works
- Payment Terms: T/T, L/C
- Supply Ability: 20 sets per week



Product Specification

- Application: Collect Rock, Sand, Soil, Gravel
- Suitable Excavator: 1 Ton-60 Ton Excavator
- Situation: Brand New
- Color: Customized
- Quality: Premium
- Material: Shaogang Q355B, NM500, Hardox Material
- Warranty: 6 Months
- Technical Support: Support



More Images



Our Product Introduction

for more products please visit us on excavatorlongarm.com

Product Description

Engineered for the toughest digging conditions, our **Excavator Rock Bucket** is designed to tackle hard rock, heavy clay, and abrasive quarry materials with ease. Built from high-tensile strength steel, this bucket features reinforced side cutters and a robust wear plate to withstand extreme impact and abrasion, ensuring a longer service life even in the harshest environments. Equipped with high-quality alloy teeth, the rock bucket delivers superior penetration and breakout force, allowing for efficient loading and reduced cycle times. Its optimized geometry ensures maximum fill factor and clean material release, making it the ideal attachment for excavators working in mining, construction, and heavy earthmoving applications.



- * Suitable excavator model: 6ton - 100ton
- * Application: dredging, mining, construction work, etc
- * Weight: 50kgs - 1000kgs
- * Color: Yellow, blue, red, white etc

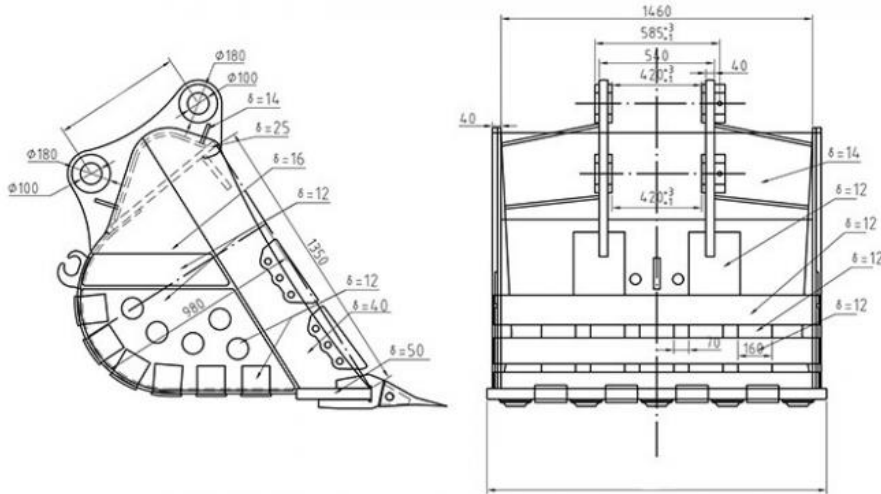
Key Features of Excavator Rock Bucket:

Heavy-Duty Construction: Made from abrasion-resistant steel for maximum durability.

Reinforced Design: Strengthened shell and wear parts to handle high-impact loads.

Efficient Digging: High-strength teeth provide excellent penetration in rocky terrain.

Versatile Application: Perfect for quarry work, mining, and trenching in hard ground.



Specifications of Excavator Rock Bucket:

Excavator Capacity (cbm)	Excavator Model(Ton)	Weight (kgs)
0.25	6-7.5	320
0.3	6-8.5	350
0.4	10-13.5	420
0.5	10-15T	600
0.6	12-15T	750
0.7	15-18	790
0.8	18-20	860
1	20	1050
1.2	20-22	1200
1.3	22-25	1300
1.4	30	1450
1.5		1600
1.6	30-35	1850
1.7		1900

1.8	35-38	2000
2	40-45	2100
2.1		2200
2.2		2350
2.3		2500
2.4		2700
2.5		2800

Production of Excavator Rock Bucket:

Material Selection

High-Strength Steel: We utilize high-tensile strength steel (such as Hardox or equivalent abrasion-resistant steel) for the main shell and side cutters. This material choice provides superior resistance to wear, impact, and fatigue.

Certified Components: All raw materials are sourced from certified suppliers and undergo quality inspection upon arrival to ensure they meet strict mechanical property standards.

① Premium Material---Q355NE / Q355B / Q690D

The materials: steel material, cylinders, sleeves etc are all stored well and keep away from moisture and corrosion



Cutting and Forming

CNC Plasma/Laser Cutting: The steel plates are cut using advanced CNC plasma or laser cutting machines. This ensures high precision in dimensions and smooth edges, which is critical for the accurate fit-up of components during welding.

Precision Bending: Heavy-duty press brakes are used to form the steel plates into the required bucket curvature. This process is carefully controlled to maintain the material's grain structure and prevent micro-cracks.



Welding and Assembly

Automated & Skilled Welding: The assembly process combines automated welding robots for consistent seams and skilled manual welding for complex joints. We employ pre-heating procedures to prevent thermal stress and cracking in thick steel plates.

Internal Gussets: For added structural strength, internal gussets and ribs are welded inside the bucket. These reinforcements distribute stress evenly across the bucket, preventing deformation under heavy loads.



Machining and Boring

Pin Boss Machining: The mounting ears (pin bosses) are precision-bored to ensure exact alignment with the excavator's linkage. This minimizes side-loading stress on the excavator pins and bushings, extending the life of both the bucket and the machine.

Tolerance Control: All machining is performed within tight tolerances to ensure a perfect fit and smooth operation.





Large floor-standing
double-sided boring
machine
Higher accuracy

Surface Treatment and Finishing

Sandblasting: Before painting, the entire bucket undergoes sandblasting to remove rust, scale, and impurities, creating a clean surface for coating adhesion.

Protective Coating: A high-quality, corrosion-resistant primer and topcoat are applied. This finish protects the bucket from environmental elements and provides a professional appearance.



Quality Control

Ultrasonic Testing: Critical welds are inspected using non-destructive testing methods, such as ultrasonic testing, to detect any internal defects.

Final Inspection: Every bucket undergoes a final dimensional check and visual inspection to ensure it meets all design specifications and quality standards before shipment.

Full Tests---Every Procedure is under strict supervision 每道工序都是在严格监督下进行



Assembly inspection 安装检测



Weld flaw detection

Make sure premium welding and not easy cracking

焊道探伤检测--确保优质的焊道和不容易开裂



Regular Testing 常规检测

Why Chose Our Excavator Rock Bucket?

Why Our Heavy-duty Rock Bucket Excel Others?

Poor Welding



High quality welding
Welding is performed only after the beveling is completed.



What is the purpose of beveling the steel plate?

Most welding machines in the industry typically achieve a penetration depth of only 3mm. Given that our steel plate is at least 8mm thick, failing to bevel the edges would prevent the welder from effectively penetrating the entire joint. This could lead to weak welds, increasing the risk of weld cracking over time.

Backplate is an important part of bucket

Structural Support: The backplate provides essential structural support, making the bucket more robust and capable of withstanding heavy loads.

Durability: High-quality materials used in the backplate can enhance the bucket's durability, reducing the risk of wear and damage and thereby extending its lifespan.

Load Distribution: The backplate helps distribute the pressure and load generated during operation evenly, preventing other components from suffering early damage due to uneven stress.

Operational Stability: A well-designed backplate contributes to the stability and maneuverability of the bucket, making excavation operations more efficient.

Thin and lightweight backplate



Thickened Backplate
Longer service life-span



Contact Us!

Any interest,
Welcome to contact Aria--sales manager of Zhonghe Machinery.
Whatsapp: wa.me/+8613822325403
Email: aria@excavatorlongarm.com
Website link: www.excavatorlongarm.com



Jiangmen Kaiping Zhonghe Machinery Manufacturing Co., Ltd



+86 13822325403



aria@excavatorlongarm.com



excavatorlongarm.com

9 Huancui West Road, Cuishanhu New Area, Kaiping City, Guangdong Province, China