



Long Reach Excavator Telescopic Arm Deep Trenching & Slope Grading Solution

Our Product Introduction

for more products please visit us on excavatorlongarm.com

Basic Information

- Place of Origin: Guangdong Province, China
- Brand Name: Kaiping Zhonghe Machinery Manufacturing Co. Ltd
- Certification: CE, Patents, ISO
- Model Number: SSB008
- Minimum Order Quantity: 1 set / piece
- Price: USD 199.00-USD18999.00
- Packaging Details: Bubble / Wooden cases
- Delivery Time: 5-25/works
- Payment Terms: T/T, L/C
- Supply Ability: 5 sets per week



Product Specification

- Material: BS900E
- Suitable Excavators: 6Ton - 200Ton
- Digging Depth: 18m - 32m
- Clamshell Bucket (cbm): 0.8cbm 1cbm 1.5cbm 2cbm 3cbm
- Application: Digging House Foundation Pits, Deep Pits
- Color: Red, Yellow, Blue White Customized



More Images



Product Description

Excavator Telescopic Arm: Versatile Performance for Heavy-Duty Tasks

Introducing our premium Excavator Telescopic Arm, designed for enhanced reach and efficiency in a variety of construction and excavation applications. Engineered with advanced materials and cutting-edge technology, telescopic arm for excavator offers unmatched durability and performance, making it an essential addition to your heavy equipment lineup.



Key Features of One Set of Telescopic Arm Excavator:

Extended Reach: Excavator telescopic arm significantly increases your excavator's reach, allowing for deeper digging and lifting capabilities in challenging terrains.

Robust Construction: Crafted from high-strength steel, excavator telescopic arm ensures longevity and resistance against wear and tear, even in the most demanding environments.

Smooth Operation: Designed for seamless extension and retraction, excavator telescopic enhances operational efficiency, reducing downtime and increasing productivity.

Versatile Applications: Ideal for construction, mining, landscaping, and more, telescopic boom excavator expands the functionality of your equipment, making it suitable for various tasks.

Easy Installation: Telescopic dipper arm comes with a straightforward installation process, allowing you to upgrade your excavator quickly and efficiently.

Why Choose Our Excavator Telescopic Arm?

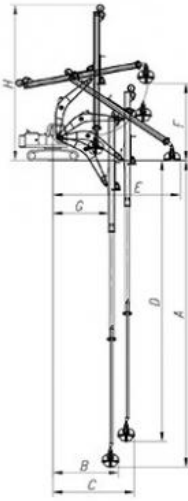
By investing in our Excavator Telescopic Arm, you're unlocking the potential for more efficient project execution. Maximize your excavator's capabilities and improve your job site performance with this essential attachment.

Length(m)	Excavator Model(ton)	Clamshell Bucket(cbm)
10	10-15T	0.2
12		0.2
12	20-25T	0.6
14		0.4
16		0.4
18		0.4
20	26-28	0.6
20-22	30-33T	1.5
	35-38T	
25	30-33T	
	35-38T	
	35-38T	
	40-50T	
26-30	36-50T	1.5
		1.5
		2
		2
		2

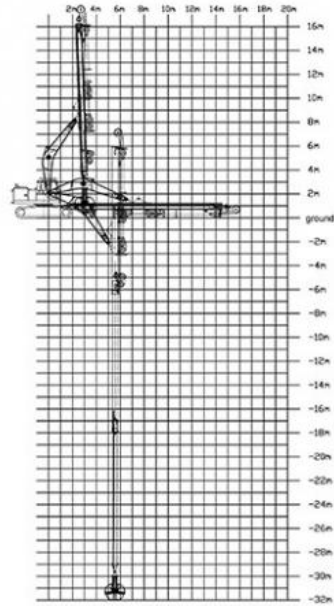
		2.2
		2.2
	40-50T	2.2
31-32	40-50T	2.2
		2.5

16m Telescopic Arm

32m Telescopic Arm



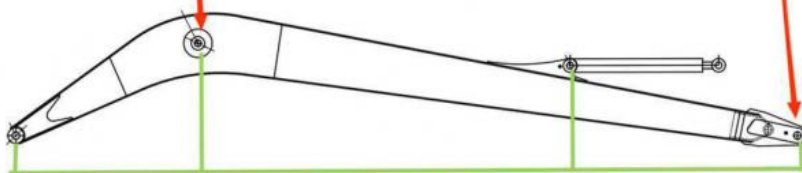
16M- Telescopic Boom	
A. Maximum vertical digging depth	16000mm
B. Maximum vertical depth digging radius	7095mm
C. Maximum vertical excavation working radius	8801mm
D. Maximum vertical digging depth	13340mm
E. Maximum vertical excavation working radius	13586mm
F. Maximum unloading height	8044mm
G. Minimum turning radius	6150mm
H. The minimum turning radius is the height of the whole machine	8087mm



Double-sided boring lathe



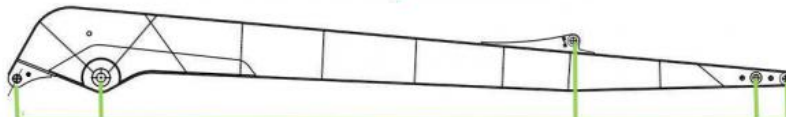
After the excavator boom and arm are assembled, the pins on the boom are drilled to ensure that the pins on the boom are parallel to each other and the cross section of the pin hole is perpendicular to the pin. The double-sided boring machine of the boom makes the hole position more accurate and the quality higher.



Make sure the cross section of the pin hole is perpendicular to the shaft.



Make sure the axis is parallel to the axis



Make sure the cross section of the pin hole is perpendicular to the shaft



Make sure the axis is parallel to the axis



Four pulley design

There are two sliding wheels on the top and two on the bottom, which separate the high-pressure hose and the wire rope to reduce mutual wear. Less wear can extend the service life.



Adopt 30mm main rope

We use thicker wire ropes, which can withstand greater tension, are not easy to break, and withstand greater pressure. The wire ropes are highly wear-resistant and have a long service life.



26mm auxiliary wire rope

Here is the auxiliary wire rope, which is used to make the telescopic arm retractable when it is extended horizontally.



Ningbo connector

It is made of metal and has high compression resistance and expansion capacity. It is easy to load and unload, and can be loaded and unloaded freely.



High Quality----Nylon Sliders

Siding block, it is nylon material, it can reduce grinding. Our sliding wheel is POM Material, with high mechanical strength and rigidity.



lubrication concentrate system

Many holes, many holes on the top and at the side, it is easy and convenient for the operator to refill the lubrication oil, they all concentrate on the front of arm.

Zhonghe Machinery is a big Manufacturer of Excavator Telescopic Arm

Any interest,

Welcome to contact Aria--sales manager of Zhonghe Machinery.

Whatsapp: wa.me/+8613822325403

Email: aria@excavatorlongarm.com

Website link: www.excavatorlongarm.com

#excavator #excavatorlongarm #excavatorlongboom #excavatorpilearm #excavatorpileboom #excavation #excavatorslidingarm #excavatorslidingboom #arm #boom #telescopicarm #longarm #longboom #bigmachine #heavymachine #bucket #longreacharm #longreachboom #shortenarm #shortenboom #telescopicarm #telescopicboom #arm #boom #telescopic #ripper #rockarm #rockboom #construction #longarmforexcavator #longreacharmforexcavator #longboomforexcavator #excavatorlongreacharm #excavatorlongreachboom



Jiangmen Kaiping Zhonghe Machinery Manufacturing Co., Ltd

+86 13822325403

aria@excavatorlongarm.com

excavatorlongarm.com

9 Huancui West Road, Cuishanhu New Area, Kaiping City, Guangdong Province, China