



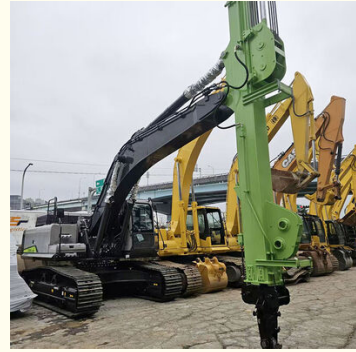
High-Performance Excavator Telescopic Dipper Arm BS900E Steel Extended Reach & Depth

Our Product Introduction

for more products please visit us on excavatorlongarm.com

Basic Information

- Place of Origin: Guangdong Province, China
- Brand Name: Kaiping Zhonghe Machinery Manufacturing Co. Ltd
- Certification: CE, Patents, ISO9001
- Model Number: SSB005
- Minimum Order Quantity: 1 set / piece
- Price: USD 399.00-USD9800.00
- Packaging Details: Bubble / Wooden Cases / Others as You Request
- Delivery Time: 4-35/works
- Payment Terms: T/T, L/C
- Supply Ability: 15 sets per week

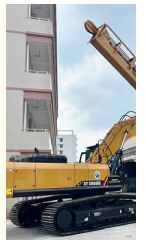
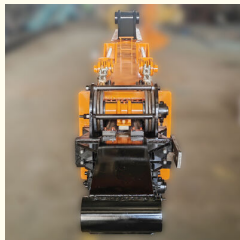


Product Specification

- Digging Depth: 8m 10m 15m 18m 20m 22m 30m 32m
- Clamshell Bucket: 0.8cbm 1cbm 2cbm 2.5cbm 3cbm
- Application: Digging House Foundation Pits, Deep Pits
- Wire Rope: High Quality Wire Rope Muti-strand
- Material: BS900E, Multiple Wire Rope, Enlarged Pulley
- Color: White Yellow Blue Red Etc



More Images



Product Description

Product Overview of Excavator Teledipper:

Want to break the operational limits of your excavator? Our professional telescopic dipper arm modification is designed for applications requiring ultra-deep digging and long-reach operations. Our telescopic arm allows your equipment to handle tasks with ease, significantly boosting operational efficiency and flexibility.



Our Produ



25M Telescopic Arm



30M Telescopic Arm

Key Advantages of Excavator Long Reach Boom And Telescopic Arm:

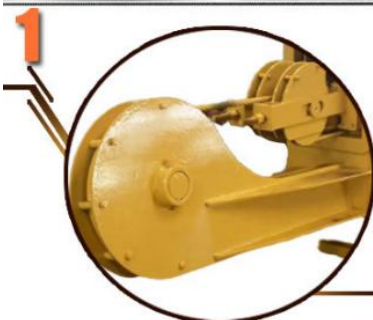
Superior Material, Built to Last: We use imported Swedish BS900E ultra-high-strength wear-resistant steel. Its yield strength is several times that of ordinary steel. This allows us to reduce the arm's self-weight while maintaining structural integrity, enabling a longer working radius and deeper digging depth without compromising the excavator's stability.

Synchronized Extension, Smooth & Efficient: Our unique multi-strand high-strength wire rope synchronization system ensures smooth and simultaneous movement during operation. Rigorously tested and precisely calculated, this system effectively distributes stress, preventing jamming or unsynchronized movement, thus guaranteeing operational safety.

Non-Destructive Modification, High Compatibility: The telescopic arm features a modular design, requiring no destructive modifications to the host excavator. It connects via standardized pins and hydraulic lines for quick installation and can be reverted to a standard arm at any time, preserving the machine's resale value. We offer customized modification services for mainstream excavator brands (Komatsu, Hitachi, etc.) ranging from 12 to 45 tons.



TELESCOPIC BOOM
ZHONGHE MACHINERY



Main Material

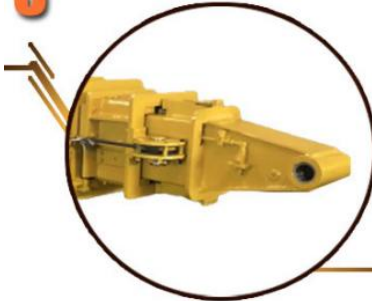
1. The telescopic arm can be made of Q690D-Q960 material according to the requirements, with much deeper excavation depth, simple and convenient operation, safe and reliable.

lighter and durable

The external hose pulley separates the hose from the main rope, avoids the friction between the main rope and the hose, reduces failures, and makes maintenance more convenient



3



Pivot End

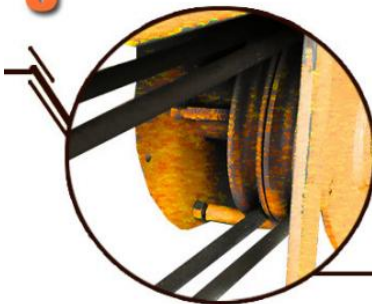
- 01 Centralized lubrication
- 02 Can match bucket and grabber

Rope Structure

- 01 Adopt 30mm main rope
- 02 The upgraded auxiliary rope design makes the pipeline smoother while stretching
- 03 Adopt 26mm auxiliary rope



5



Easy To Oil Filling

- 01 Oil filling hole at the second arm front end(to the top slider)
- 02 Oil filling hole position on both sides of the third arm front end(to the top slider)

Technical Specifications (Example for 30-ton Excavator Modification):

Applicable Machine: 28-35 ton excavators

Total Arm Length: Customizable, standard range 10-30meters

Max Digging Depth: Over 30 meters

Main Material: BS900E Ultra-High-Strength Steel

Extension Mechanism: Hydraulic cylinder driven, multi-strand wire rope synchronized

Bucket Configuration: 1.5 - 2m³ (adjusted according to arm length)

Digging Depth(m)	Excavator Model(ton)	Bucket Capacity(cbm)
10	10-15T	0.2
12		0.2
12		0.6
14	20-25T	0.4
16		0.4
18		0.4
20	26-28	0.6
20-22	30-33T	1.5
	35-38T	
	30-33T	
	35-38T	
25	35-38T	2.2
	40-50T	
26-30	36-50T	1.5
		1.5
		2
		2
		2.2
		2.2
31-32	40-50T	2.2
		2.5

Production Details of Excavator Telescopic Arm:

High Precision Machines--Ensure High-quality



Large double-sided floor boring machine
High Precision



Mechanical beveling

Every plate is full beveling before welding
Strong welding & Not easy cracking



Panel is cut by CNC plasma machine with
less deformation

Every steel plate has certifications

Our steel plates are purchase from BaoGang Company which is a big and famous steel material company.

宝钢 宝山钢铁股份有限公司 产品质量证明书
INSPECTION CERTIFICATE

炉号	钢号	规格	重量	化学成分	力学性能	无损检测	备注
7543	Q345B	1000*1000*12	12.56	C:0.22, Mn:0.28, P:0.0025, S:0.0018	屈服强度:355, 抗拉强度:475-630	超声检测合格	

宝钢 宝山钢铁股份有限公司 产品质量证明书
INSPECTION CERTIFICATE

炉号	钢号	规格	重量	化学成分	力学性能	无损检测	备注
7543	Q345B	1000*1000*12	12.56	C:0.22, Mn:0.28, P:0.0025, S:0.0018	屈服强度:355, 抗拉强度:475-630	超声检测合格	

Applications of excavator telescopic arm:
Dredging and desilting of rivers and lakes

Deep foundation pit excavation for subway and construction projects
 Slope grading and protection for highways and railways
 Foundation excavation for high-rise buildings
 Contact us now to get your exclusive modification plan!



Cleaning and dredging



Telescopic arm test



Bridge construction projects



Deep pit work



For Deep foundation pit construction project



For unloading materials For Large-scale earthworks



Are you struggling with these issues?

Is your standard excavator arm too short, leaving you helpless against deep foundation pits or wide rivers?

Is purchasing a dedicated long-reach excavator too expensive for infrequent use?

Are you worried that modifications will affect your excavator's original performance and safety?

Our telescopic dipper arm provides the perfect solution!

Specializing in R&D and manufacturing of excavator attachments, we created this telescopic arm to tackle challenges in special working conditions. It instantly transforms your standard excavator into a "multi-tool," easily handling deep, high, and distant tasks. This "one machine, multiple uses" capability significantly reduces equipment procurement and maintenance costs.

Why Choose Our Telescopic Dipper Arm?

Ultimate Lightweight & High Strength: We've moved beyond traditional steel, now using BS900E aerospace-grade high-strength steel plate. This material is not only hard and wear-resistant but also drastically reduces arm weight. A lighter arm means less burden on the excavator's hydraulic system and undercarriage, resulting in more stable and efficient operations.

Reliable Synchronized Extension Technology: The core extension function is powered by a sophisticated multi-strand wire rope system. Acting like the excavator's "tendons," this system ensures absolute synchronization and smoothness during extension and retraction, preventing structural damage and safety hazards caused by misalignment, leading to a longer service life.

Professional Customization Services: We don't just sell products; we provide solutions. From arm length design and hydraulic matching to counterweight adjustments, our engineering team offers full technical support to ensure your modified equipment performs at its peak.

Any interest,

Welcome to contact Aria--sales manager of Zhonghe Machinery.

Whatsapp: wa.me/+8613822325403

Email: aria@excavatorlongarm.com

Website link: www.excavatorlongarm.com



Jiangmen Kaiping Zhonghe Machinery Manufacturing Co., Ltd

+86 13822325403

aria@excavatorlongarm.com

excavatorlongarm.com

9 Huancui West Road, Cuishanhu New Area, Kaiping City, Guangdong Province, China