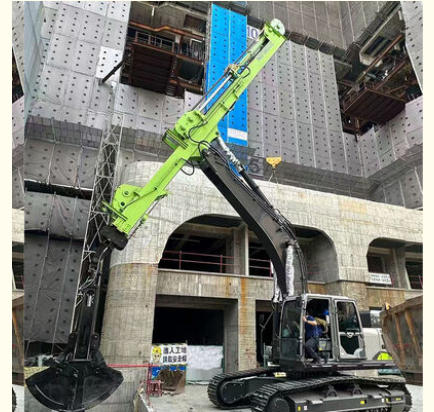




High-Performance Excavator Telescopic Dipper Arm Extend Reach & Efficiency

Basic Information

- Place of Origin: Guangdong Province, China
- Brand Name: Kaiping Zhonghe Machinery
- Certification: CE, Patents, ISO
- Model Number: SSB006
- Minimum Order Quantity: 1 set / piece
- Price: USD 119.00-USD19999.00
- Packaging Details: Bubble / Wooden Cases / Others as you request
- Delivery Time: 5-20/works
- Payment Terms: T/T, L/C or others as you request
- Supply Ability: 5 sets per week



Product Specification

- Cylinders: High Quality Cylinders
- Digging Depth: 18m 20m 25m 30m 32m
- Material: BS900E, Multiple Wire Rope
- OEM / ODM: YES
- Design: Work Smoothly High Effective Design, Safe And Stable, Telescopic Long Reach
- Suitable Excavators: Hitachi Komatsu Sany Cat Zoomlion Kobelco Etc
- Welding: Premium Welding, Not Easy Cracking
- Wire Rope: 20mm 26mm 28mm 30mm



More Images



Our Product Introduction

for more products please visit us on excavatorlongarm.com

Product Description

Short Description of Telescopic Arm for Excavator

Maximize your excavator's versatility with our custom Excavator Telescopic Dipper Arm. Designed for heavy-duty applications, our extendable dipper sticks offer superior reach, depth, and durability. Perfect for deep pits, deep trenching. Upgrade your excavator today!



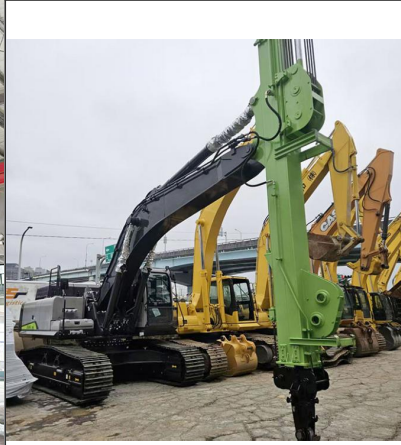
25M Telescopic Arm for **SY365H Pro**



25M Telescopic Arm for **XE310GA**



25M Telescopic Arm for **Liugong 933E**



28M Telescopic Arm for **Zoomlion 385**





Detailed Product Description of excavator telescopic arm

Unlock the Full Potential of Your Excavator

Are you looking to expand the working range of your excavator without buying a new machine? Our Telescopic Dipper Arm (also known as a sliding boom or extendable arm) is the ultimate solution for contractors who need extra reach and versatility. Unlike standard fixed arms, our telescopic boom allows your excavator to extend its reach dynamically. By upgrading to our telescopic arm, you transform a standard excavator into a multi-functional powerhouse.

Key Features & Benefits of Telescopic Arm Excavator

Extended Reach & Depth: Instantly increase your digging depth and dumping height. Our telescopic design allows for a significant extension range, making it ideal for hard-to-reach areas.

Heavy-Duty Construction: Manufactured from high-tensile strength steel (BS900E), ensuring resistance to deformation and cracking under extreme pressure.

Precision Engineering: Equipped with high-quality seals and synchronized hydraulic systems to ensure smooth extension and retraction without jerking.

Customizable Fit: We specialize in excavator arm modifications. Whether you have a mini excavator (1 ton) or a large crawler excavator (50 ton+), we customize the arm to fit your specific make and model (Komatsu, Hitachi, Hyundai, etc.).

Cost-Effective Solution: Instead of investing in a specialized long-reach excavator, simply modify your existing machine with our sliding dipper arm to save on capital costs.

To help you decide if our Excavator Telescopic Dipper Arm is the right solution for your project, we have compiled the most common questions regarding installation, performance, and maintenance.



Four pulley design

There are two sliding wheels on the top and two on the bottom, which separate the high-pressure hose and the wire rope to reduce mutual wear. Less wear can extend the service life.



Adopt 30mm main rope

We use thicker wire ropes, which can withstand greater tension, are not easy to break, and withstand greater pressure. The wire ropes are highly wear-resistant and have a long service life.



26mm auxiliary wire rope

Here is the auxiliary wire rope, which is used to make the telescopic arm retractable when it is extended horizontally.



Ningbo connector

It is made of metal and has high compression resistance and expansion capacity. It is easy to load and unload, and can be loaded and unloaded freely.



High Quality----Nylon Sliders

Siding block, it is nylon material, it can reduce grinding. Our sliding wheel is POM Material, with high mechanical strength and rigidity.



lubrication concentrate system

Many holes, many holes on the top and at the side, it is easy and convenient for the operator to refill the lubrication oil, they all concentrate on the front of arm.

Accessories for the three-section telescopic arm



Orange peel grapple

Structural composition: hydraulic cylinder, gripper, link body.

Working Principle: The excavator provides power to drive the cylinder to open and close, and the balance valve is used to synchronize the cylinder.



Clamshell bucket

Structural composition: The main connecting frame, bucket flap, and oil cylinder are composed of three parts.

Working principle: The excavator provides power, pressure, and flow to drive the oil cylinder to move, and the shell bucket is opened and closed through the extension and contraction of the oil cylinder.

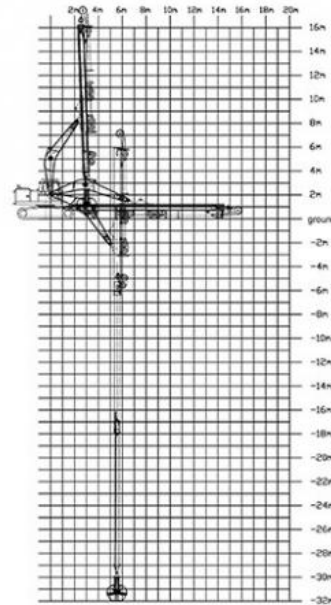


16m Telescopic Arm



16M- Telescopic Boom	
A. Maximum vertical digging depth	16000mm
B. Maximum vertical depth digging radius	7095mm
C. Maximum vertical excavation working radius	8801mm
D. Maximum vertical digging depth	13340mm
E. Maximum vertical excavation working radius	13586mm
F. Maximum unloading height	8044mm
G. Minimum turning radius	6150mm
H. The minimum turning radius is the height of the whole machine	8087mm

32m Telescopic Arm



Production Details of Excavator Telescopic:

③ Full Tests---Every Procedure is under strict supervision



Assembly inspection



Weld flaw detection

Make sure premium welding and not easy cracking



Regular Testing



② High Precision Machines--Ensure High-quality

Large double-sided floor boring machine
High Precision



Mechanical beveling

Every plate is full beveling before welding
Strong welding & Not easy cracking



Steel plates are cut by **CNC plasma machine**
with less deformation



Will installing a telescopic arm affect the stability of my excavator?

Answer: Not if installed correctly. Our telescopic arms are engineered using Finite Element Analysis (FEA) to ensure the weight distribution matches your specific excavator model. For longer reach extensions, we often recommend adding standard counterweights to the rear of the machine to maintain optimal balance. We provide the exact specifications for required counterweights based on the arm length you choose.

How is the extension mechanism powered?

Answer: Our telescopic arms utilize a robust multi-strand steel wire rope tension system synchronized with your excavator's hydraulic circuits. This system ensures smooth, synchronized extension and retraction. The hydraulic pressure drives the cylinder, while the high-tensile wire ropes ensure the stages move in perfect unison, preventing jamming or uneven wear.

Does this modification require permanent changes to my excavator?

Answer: No. Our telescopic dipper arms are designed to be bolt-on attachments. We replace your standard dipper stick with the telescopic unit. The hydraulic piping connects to your existing auxiliary lines (or main lines, depending on the setup). This means you can revert your excavator back to its original configuration if needed, preserving the machine's resale value.

What kind of maintenance does a sliding boom require?

Answer: Maintenance is straightforward. The primary focus is on the multi-strand wire ropes and the sliding pads.

Wire Ropes: Regularly check for tension and lubricate to prevent corrosion.

Sliding Pads: Inspect the wear pads between the sliding stages and replace them when significant wear is observed to maintain tight tolerances.

Greasing: Standard daily greasing of pins and bushings is required, just like a standard arm.

Can I use a hydraulic hammer or breaker with this arm?

Answer: Generally, telescopic arms are designed primarily for digging, grading, and dredging where reach is more important than impact force. While the arm is built from high-strength steel, using a breaker creates shockwaves that can damage the telescopic mechanism and wire ropes. We recommend using a clamshell bucket for digging or a grab for material handling. If you must use a breaker, please consult our engineering team first.

Detailed Technical Specifications

We utilize premium materials to ensure our Excavator Telescopic Dipper Arm withstands the rigors of heavy-duty modification work. Below are the detailed specifications for our standard heavy-duty series.

Any interest,

Welcome to contact Aria--sales manager of Zhonghe Machinery.

Whatsapp: wa.me/+8613822325403

Email: aria@excavatorlongarm.com

Website link: www.excavatorlongarm.com



Jiangmen Kaiping Zhonghe Machinery Manufacturing Co., Ltd



+86 13822325403



aria@excavatorlongarm.com



excavatorlongarm.com

9 Huancui West Road, Cuishanhu New Area, Kaiping City, Guangdong Province, China