



Efficient Excavator Long Arm to Boost Your Productivity

Our Product Introduction

for more products please visit us on excavatorlongarm.com

Basic Information

- Place of Origin: Guangdong Province, China
- Brand Name: Kaiping Zhonghe Machinery Manufacturing Co. Ltd
- Certification: CE, ISO9001, Patents
- Model Number: JCB0018
- Minimum Order Quantity: 1 set / piece
- Price: USD 199.00-USD8999.00
- Packaging Details: Bubble / Wooden Cases
- Delivery Time: 5-25/works
- Payment Terms: T/T, L/C
- Supply Ability: 5 sets per week

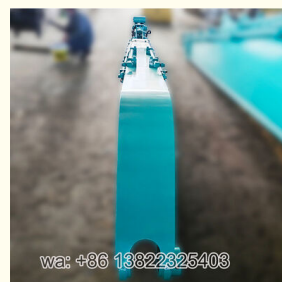


Product Specification

- Working Environment: Dredging, Digging Rock, Soil, Silt, Demolition Work
- Excavator Models: Kobelco 220, Kobelco 200, Hitachi 200, Cat320 Etc
- Digging Depth(m): 10m
- Length Of Excavator Long Arm: Customized 10m 15m 18m Etc
- Color: Customized
- Material: Q355B / Q690D
- OEM / ODM: Yes
- Bucket Capacity(cbm): 0.5cbm 1cbm 1.2cbm



More Images



Product Description

Our excavator long arm is engineered to enhance your excavator's reach and efficiency, making it ideal for various construction, mining, and infrastructure projects. With the growing global demand for high-performance excavator attachments, especially in urbanizing areas like North America, Europe, and Asia, our product is a top choice.

Key Features of Long Boom Excavator For Sale:

Durable Materials: Made from high-quality steel to withstand extreme conditions.

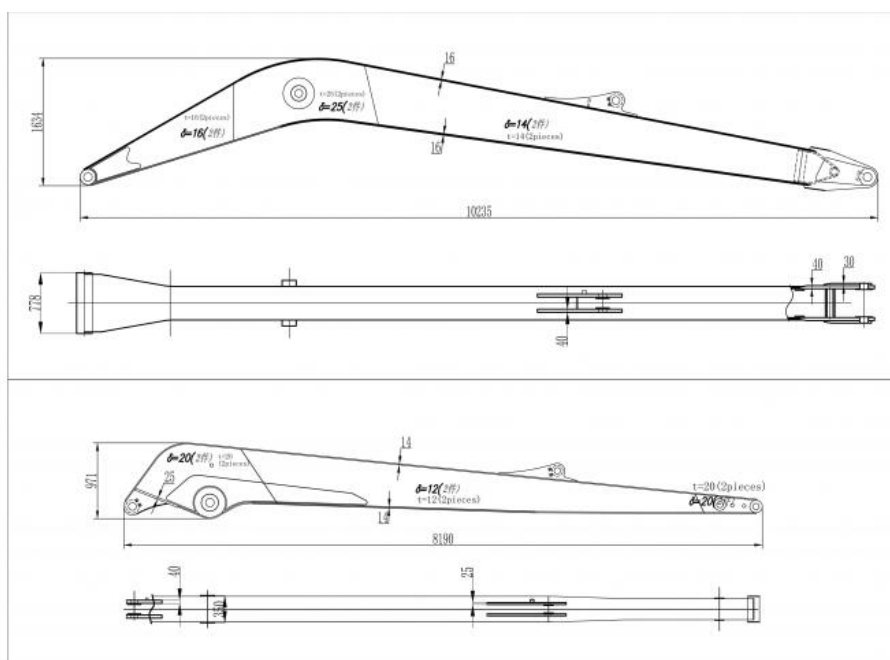
Easy Installation: Modular design allows for quick setup and removal, minimizing downtime.

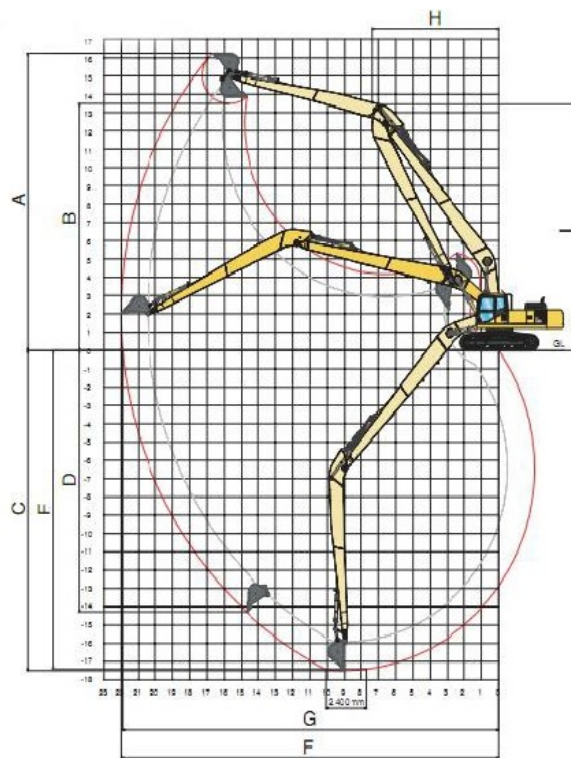
Versatility: Compatible with various excavator models to meet different job requirements.

Market Demand of Our Long Reach Boom Excavator: The increasing need for efficient heavy machinery is driving sales of our excavator long arm. Customers in sectors such as construction and mining are particularly keen on enhancing productivity. Customer Feedback: Our excavator long arm has received excellent reviews, with users praising its performance and reliability. Many report significant time savings and cost reductions on their projects.

Technical Drawing of Excavator Long Arm:

Excavator Model(ton)	Counterweight(ton)	Bucket Capacity(cbm)	Length(m)	Total Length(m)
20-23T	0	0.5	8.3	15-15.4M
		12T	6.7	
24-29T	0	0.6	8.3	
		20T	6.7	
30-38T	0	1cbm	8.3	
		22T	6.7	
40-50T	0	1.4cbm	8.3	15.5-16M
		30T	6.7	
20-23T	0	0.5	8.8	
		12T	7.2	
24-29T	0	0.6	8.8	
		20T	7.2	
30-38T	0	1cbm	8.8	17-18
		22T	7.2	
40-50T	0	1.4cbm	8.8	
		30T	7.2	
20-25T	2	0.4	9.7	
		12T	8.3	
26-28T	0	0.4	9.7	
		12T	8.3	
30-36T	0	0.6	10	17-18
		20T	8	
37-39T	0	0.8	10	
		25	8	
40-47T	0	1.2	10	
		30	8	
48-55T	0	1.2	10	17-18
		30	8	





Why Chose Our Excavator Long Boom Arm for Sale?

Front end design of arm

Ours



The side panel at the front end of our arm is thickened. The force at this position is relatively large, so thickening of this position is very necessary.

Others



Other manufacturers do not thicken this position.

VS

Design of the rear seat plate of the arm

Ours



VS

Others

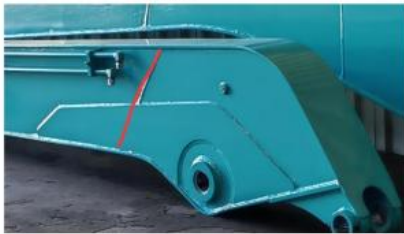


Our plate is thickened because this position is connected to the boom cylinder and is the most stressed part of the arm, so we thicken the plate to avoid cracking at this position.

Other manufacturers do not reinforce and thicken this location. After the excavator has been working for a long time, this location is prone to quality problems.

Design of arm side panel

Ours



VS

Others



The thick plate and thin plate of our arm side plate are directly connected by diagonal connection. This design can effectively avoid excessive stress concentration and cracking at the interface.

Other manufacturers use straight-line docking at this location, which is not reasonable enough, with excessively concentrated stress and prone to cracking.

Butt joint design of arm upper cover

Ours



VS

Others



The upper cover of our arm is generally not butt-jointed. Even if it is butt-jointed, we will stick a butt-jointed plate inside the cover to ensure that the welding can be fully melted. Our butt-jointed position is generally selected in the middle of the ear seat, so that there will be no problems.

Other manufacturers dock at other locations, which may cause cracking at the docking interface later.

Our Contact Details:

Any interest,

Whatsapp: wa.me/+8613822325403

Email: aria@excavatorlongarm.com

Website link: www.excavatorlongarm.com



Aria

KAIPING ZHONGHE MACHINERY MANUFACTURING CO. LTD

Whatsapp: +86 13822325403

Email: aria@excavatorlongarm.com

Web: www.excavatorlongarm.com



Jiangmen Kaiping Zhonghe Machinery Manufacturing Co., Ltd

+86 13822325403

aria@excavatorlongarm.com

excavatorlongarm.com

9 Huancui West Road, Cuishanhu New Area, Kaiping City, Guangdong Province, China