



## Excavator Long Reach Boom and Arm for 25-55 Ton 17-22m Excavators High Quality Construction Machinery Parts

Our Product Introduction

for more products please visit us on excavatorlongarm.com

### Basic Information

- Place of Origin: Guangdong, China
- Brand Name: Zhonghe
- Certification: CE
- Model Number: JCB001
- Minimum Order Quantity: 1 piece
- Price: \$11000/pieces
- Packaging Details: Bubble bag packaging
- Delivery Time: 25-30 work day
- Payment Terms: T/T
- Supply Ability: 5 Piece/Pieces per Month

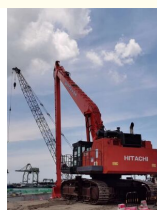
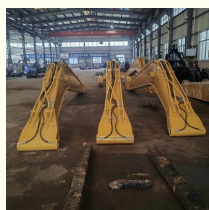


### Product Specification

- Product Name: Long Reach Boom Arm
- Material: Q355B/Q690D
- Applicable Industries: Construction Work
- Suitable Excavator: 25-55Ton
- Length: 17-22m
- Warranty: Six Months
- Condition: 100% New Product
- MOQ: 1 Set
- Packing: Bubble Bag Packaging
- Payment: T/T



### More Images



### Product Description

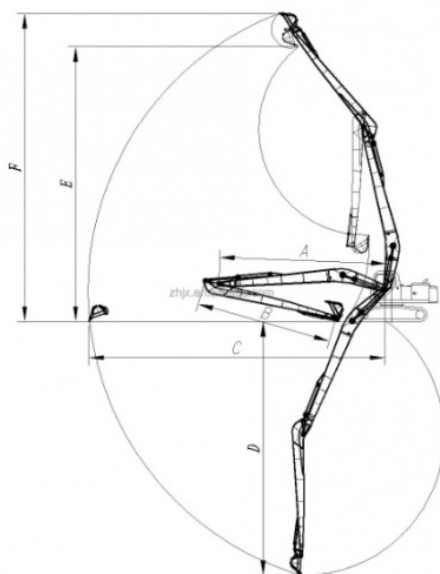
Our Product Introduction



## ZHONGHE-Long Reach Boom

With the majestic momentum  
to help the century project

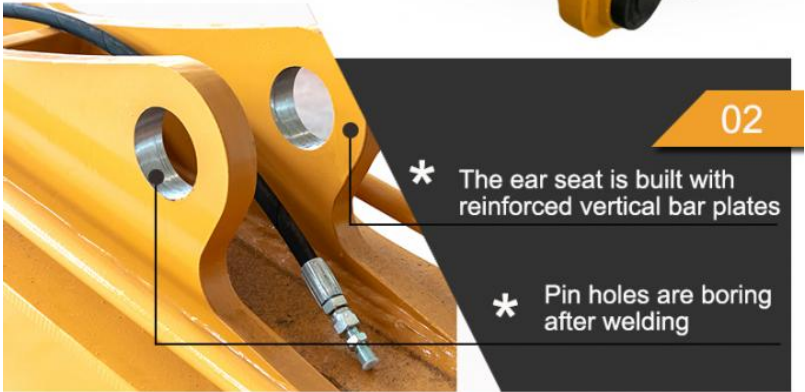
### ZHONGHE Advantages



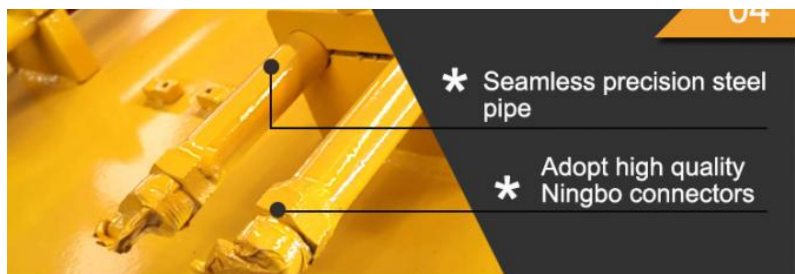
1. Fashionable style
2. Professional Team
3. Quality control
4. Moderate price
5. CE certification
6. Promptly answer
7. Patented technology
8. Enrich production experience

Excavator (ton)	Total Length(mm)	(A)Boom (mm)	(B)Arm (mm)	Maximum Digging Radius(mm)	Maximum Digging Depth(mm)	Maximum Unloading Height(mm)	Maximum Digging Height(mm)	Bucket Volume (cbm)	Cylinder (ton)
11-15T	13000	7250	5750	11200	9000	7550	9350	0.15-0.3	12T
20-25T	15400	8220	7180	14500	11300	10400	12600	0.4-0.6	12T
20-30T	18000	10000	8000	17300	13000	17200	14000	0.4-0.7	12T
35-40T	20000	11000	9000	19200	14900	12900	15200	0.6-1.2	12T
40-45T	22000	12000	10000	21300	16000	14000	17000	0.5-1	20T
40-50T	24000	13000	11000	23000	17900	15200	18100	0.5-1.1	20T

Long Reach Boom Arm Accessories				
Name	Unit	Main Material	Warranty (day)	
Boom	1	Q355B	360	
Arm	1	Q355B	360	
Bucket	1	Q355B	90	
Bucket Cylinder	1	/	180	
Linkage Assembly	1	Q355B	180	
Pin	6	40MuCr	/	
High-pressure Hose	4	4 layers wire ring	/	
Lubrication Pipe	5	1 layers wire ring	/	
Steel Tube	6	20#steel	/	

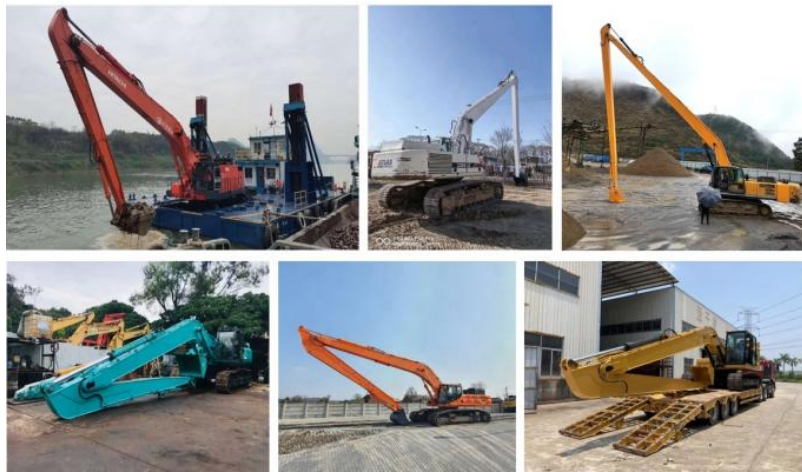






Detailed pictures





## » COMPANY PROFILE «

### Kaiping Zhonghe Machinery Manufacturing Co., Ltd

Founded in 2018, Zhonghe heavy industry independently develops and produces construction machinery parts such as excavator lengthening arm, mountain pulling arm, two-stage telescopic arm, sliding arm, three-stage telescopic arm, three-stage demolition arm, rock arm, tunnel arm, bucket, pile driving arm, wood grabber, steel grabber and scarifier.



It is widely used in weathered stone crushing, subway construction, forestry logging, municipal pipeline engineering, river dredging, building demolition, Larsen steel sheet pile driving and pulling, pile foundation engineering, resource recovery and other engineering industries. The products are sold in more than 40 countries and regions. Provide one-year after-sales service with after-sales warranty and deliver on time. 24-hour online service can provide OEM production.







### 14000m<sup>2</sup> Workshop

We have more than 14000m<sup>2</sup> steel structure workshop with lots of high precision processing equipments.



### R&D Team

We use precision drawing software to achieve the max working range under the premise of safe operation.



### Skillful Workers

There are more than 60 skillful staffs, 30 welding workers with over 5 years welding experience.



### Customized

1. Fit all brand.
2. Color, length, material are customized.
3. Extra pipeline can be added.



### Prompt Lead Time

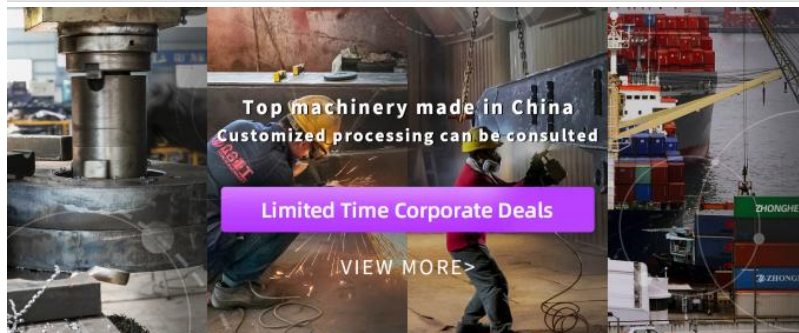
1. Our lead time is 7-15 days.
2. Our annual output of excavator boom arms can reach 600 sets.



### 100% Service

1. Online support within 24 hours.
2. Appointment video technical support.

## EXHIBITION



Top machinery made in China  
Customized processing can be consulted

Limited Time Corporate Deals

[VIEW MORE>](#)

The equipments we have:



Large double-sided floor boring machine



CNC plasma cutting machine



Automatic edge milling machine



Environmentally friendly spray booth

The production process:





# 01»

Panel is cut by  
CNC plasma  
machine with  
less deformation



# «02

Tolerance within  
5-10um, ensure  
the accuracy of  
hole



# 03»

GMAW-Gas  
Metal Arc  
Welding



# «04

Environmentally  
friendly verified  
spraying room.  
Professional and  
beautiful paint  
finish





## » PRODUCT CATEGORY «



Long Reach Boom



Two-Section Telescopic Arm



Three-Section Telescopic Arm



Pile Driving Arm



Sliding Arm



Tunnel Arm



Demolition Boom



Rock Arm

## » PRODUCT CATEGORY «



Standard Bucket



Rock Bucket



Clamshell Bucket



Rock Ripper



Sliding Arm



Skeleton Bucket



Ditch Cleaning Bucket



Orange Peel Grapple



Root Rake

## >> CERTIFICATIONS <<



## >> APPLICABLE BRANDS <<

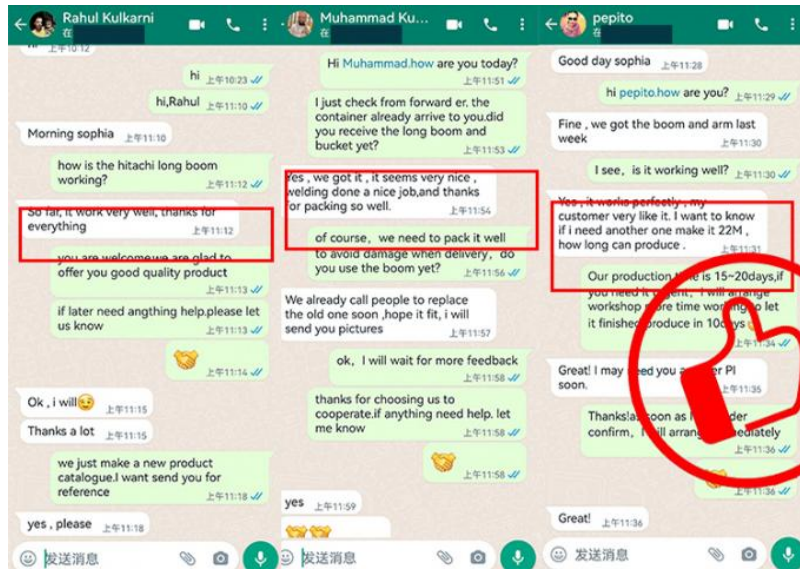




# PACKAGE & SHIPPING



Package  
Bubble bag packing for most products;  
Wooden case for little products, like buckets;  
Iron frame support for boom arms.  
The accessories and package of excavator long boom arm are subjected to our final confirmation.





## FAQ



### 1. Who are we?

We are based in Guangdong, China, start from 2018, sell to Southeast Asia(40.00%), Mid East(10.00%), North America(10.00%), South Asia(8.00%), Eastern Europe(8.00%), Oceania(8.00%), Eastern Asia(5.00%), Africa(5.00%), South America(4.00%), Northern Europe(2.00%). There are total about 51-100 people in our office.

### 2. How can we guarantee quality?

Always a pre-production sample before mass production;  
Always final inspection before shipment;

### 3. What can you buy from us?

Excavator Long Reach Boom, Excavator Telescopic Arm, Excavator Demolition Arm, Excavator Grapple, Excavator Bucket

### 4. Why should you buy from us not from other suppliers?

With more than 60 employees, it has its own unique research and development team in more than 10000 square meters of steel structure standardized plant. The annual production of various arms is up to 600 sets, and various of buckets are 6000 pieces.

### 5. What services can we provide?

Accepted Delivery Terms: FOB, CIF, EXW, CIP;  
Accepted Payment Currency: USD, CNY;  
Accepted Payment Type: T/T;



*"Trade Assurance  
gave our small business  
confidence to work with  
a new supplier."*

[Learn More](#)





## HOT CUSTOMIZED PRODUCTS

Goods that people like to customize



### Long Reach Excavator Boom

- Long Reach Boom /
- Three Sections Demolition Arm /
- Demolition Extension Arm /

[Customize now](#)



### Demolition Boom

- Long Demolition Boom /
- Super Long Demolish Distance /
- Safe Demolition /

[Customize now](#)



### Telescopic Boom

- Three-stage Extension /
- Super Long Control Distance /
- Flexible Expansion /

[Customize now](#)



### Bucket

- Replaceable Fork Tines /
- Heavy Durable Bucket /



### Wood Grabber

- Mechanical Hydraulic Shear /
- Excavator Rotating Grapple /



Jiangmen Kaiping Zhonghe Machinery Manufacturing Co., Ltd



+86 13822325403



aria@excavatorlongarm.com



excavatorlongarm.com

9 Huancui West Road, Cuishanhu New Area, Kaiping City, Guangdong Province, China