

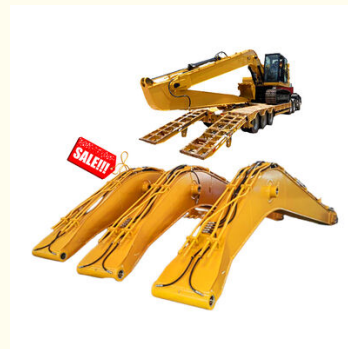
Excavator Long Reach Boom and Arm 14M Extended Boom Arm for PC120 DH225 CAT320

Our Product Introduction

for more products please visit us on excavatorlongarm.com

Basic Information

- Place of Origin: Guangdong, China
- Brand Name: Zhonghe
- Certification: CE
- Model Number: JCB001
- Minimum Order Quantity: 1 piece
- Price: \$5900/pieces
- Packaging Details: Bubble bag packaging
- Delivery Time: 25-30 work day
- Payment Terms: T/T
- Supply Ability: 5 Piece/Pieces per Month

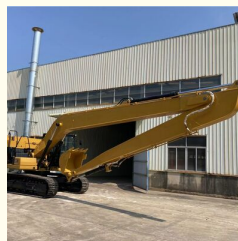
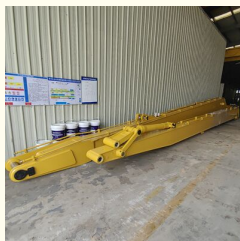


Product Specification

- Part Name: Excavator Long Reach Boom Arm
- Material: Q355B/Q690
- Applicable Industries: Energy & Mining & Demolition
- Suitable Excavator: 10-22Ton
- Length: 14m
- Warranty: 6 Months
- Condition: 100%new
- Quality: High-Quality
- MOQ: 1 PCS
- Packing: Standard Packing
- After-sales Service Provided: Online Video Support



More Images



Product Description

Our Product

Excavator Long Reach Boom



Long Boom Customization

- *Applicable for all brand excavator.
- *Color, length, material can do according to you.
- *Made of Q355B or Q690D steel with good strength and rigidity.



ZHONGHE MACHINERY

Excavator long reach boom arm

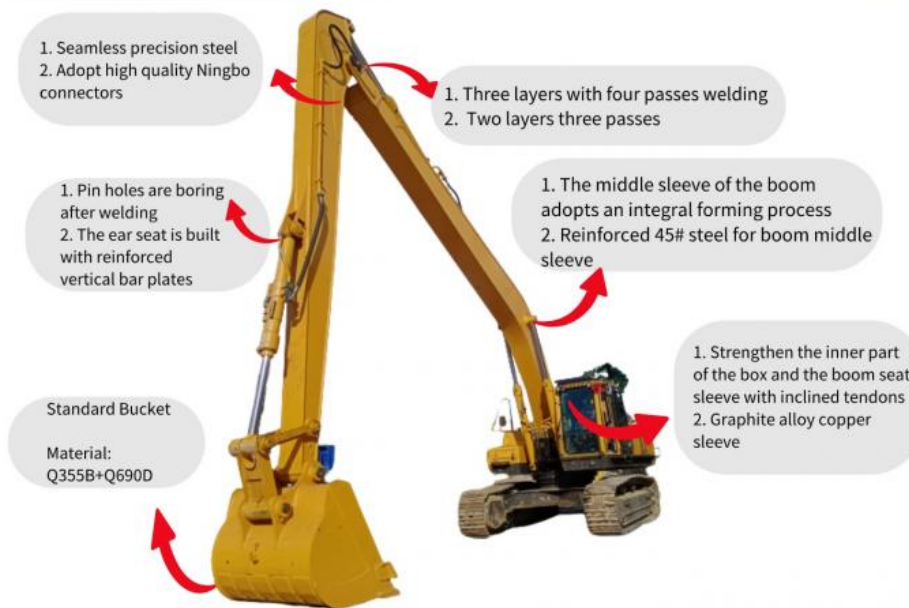
Two-section long, reach arms can increase the range of operations without altering the installation and performance of the original excavator. it is mainly applicable to earthwork projects, deep trench excavation operations, river dredging operations, etc.



Features of Long Reach Boom Arm

1. Customization according to working conditions.
2. Q355B and Q690D materials are optional. Adopt a graphite alloy copper sleeve in boom base.
3. The opening angle of boom and arm can reach 163°, allowing for a greater excavating radius and height.
4. Long reach arm will be boring after welding, the accuracy is high precision as the original arm to prolong its service life.

PRODUCT DESCRIPTION



Long boom arm of excavator's advantages

- * Good quality as better material, experienced worker and professional engineer.
- * Supply customization service according to customer requirements.
- * Max work range and the max digging height are larger as angle of boom and arm can reach 163 degrees.

PRODUCT DESCRIPTION



Long reach boom of the excavator's advantages



*Good quality as better material, experienced worker and professional engineer

*Supply customization service according to customer requirements

*Max work range and the max digging height are larger as angle of boom and arm can reach 163 degrees



Working conditions of excavator long reach boom

Manucipal engineering, subway construction, river dredging, reservoir cleaning and other water conservancy projects

Working conditions of excavator long reach fronts

Municipal engineering, subway construction, river dredging, reservoir cleaning and other water conservancy projects.

Warning if you buy our long boom for excavator

Arm cylinder use the original one to save cost, and counterweight is not included. we can provide one if needed but not for free.

PRODUCT PARAMETERS

Kaiping Zhonghe Machinery Manufacturing Co., Ltd.

Excavator (ton)	Total Length(mm)	(A)Boom (mm)	(B)Arm (mm)	Maximum Digging Radius(mm)	Maximum Digging Depth(mm)	Maximum Unloading Height(mm)	Maximum Digging Height(mm)	Bucket Volume (cbm)	Cylinder (ton)
11-15T	13000	7250	5750	11200	9000	7550	9350	0.15-0.3	12T
20-25T	15400	8220	7180	14500	11300	10400	12600	0.4-0.6	12T
20-30T	18000	10000	8000	17300	13000	17200	14000	0.4-0.7	12T
35-40T	20000	11000	9000	19200	14900	12900	15200	0.6-1.2	12T
40-45T	22000	12000	10000	21300	16000	14000	17000	0.5-1	20T
40-50T	24000	13000	11000	23000	17900	15200	18100	0.5-1.1	20T

Long Reach Boom Arm Accessories				
Name	Unit	Main Material	Warranty (day)	
Boom	1	Q355B	360	
Arm	1	Q355B	360	
Bucket	1	Q355B	90	
Bucket Cylinder	1	/	180	
Linkage Assenbly	1	Q355B	180	
Pin	6	40MuCr	/	
High-pressure Hose	4	4 layers wire ring	/	
Lubrication Pipe	5	1 layers wire ring	/	
Steel Tube	6	20#steel	/	

Detailed pictures





COMPANY PROFILE

Kaiping Zhonghe Machinery Manufacturing Co., Ltd

Founded in 2018, Zhonghe heavy industry independently develops and produces construction machinery parts such as excavator lengthening arm, mountain pulling arm, two-stage telescopic arm, sliding arm, three-stage telescopic arm, three-stage demolition arm, rock arm, tunnel arm, bucket, pile driving arm, wood grabber, steel grabber and scarifier.



It is widely used in weathered stone crushing, subway construction, forestry logging, municipal pipeline engineering, river dredging, building demolition, Larsen steel sheet pile driving and pulling, pile foundation engineering, resource recovery and other engineering industries. The products are sold in more than 40 countries and regions. Provide one-year after-sales service with after-sales warranty and deliver on time. 24-hour online service can provide OEM production.



14000m² Workshop

We have more than 14000m² steel structure workshop with lots of high precision processing equipments.



R&D Team

We use precision drawing software to achieve the max working range under the premise of safe operation.



Skillful Workers

There are more than 60 skillful staffs, 30 welding workers with over 5 years welding experience.



Customized

1. Fit all brand.
2. Color, length, material are customized.
3. Extra pipeline can be added.



Prompt Lead Time

1. Our lead time is 7-15 days.
2. Our annual output of excavator boom arms can reach 600 sets.



100% Service

1. Online support within 24 hours.
2. Appointment video technical support.

>> EXHIBITION <<



Top machinery made in China
Customized processing can be consulted

Limited Time Corporate Deals

[VIEW MORE>](#)

The equipments we have:



Large double-sided floor boring machine



CNC plasma cutting machine



Automatic edge milling machine



Environmentally friendly spray booth

The production process:



»» PRODUCT CATEGORY ««



Long Reach Boom



Two-Section Telescopic Arm



Three-Section Telescopic Arm



Pile Driving Arm



Sliding Arm



Tunnel Arm



Demolition Boom



Rock Arm

»» PRODUCT CATEGORY ««



Standard Bucket



Rock Bucket



Clamshell Bucket



Rock Ripper



Sliding Arm



Skeleton Bucket



Ditch Cleaning Bucket



Orange Peel Grapple



Root Rake

>> CERTIFICATIONS <<



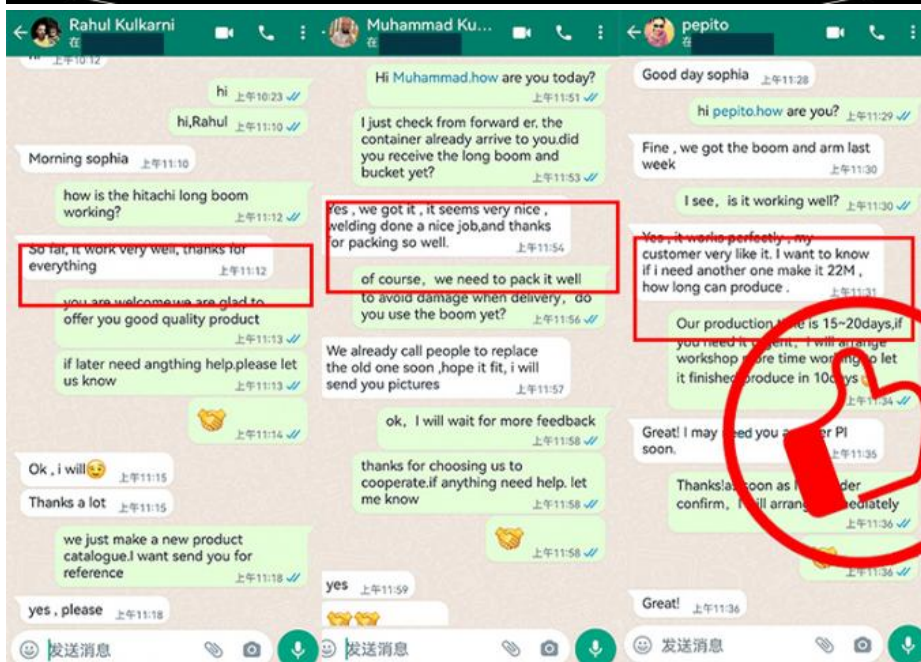
>> APPLICABLE BRANDS <<



PACKAGE & SHIPPING



Package
Bubble bag packing for most products;
Wooden case for little products, like buckets;
Iron frame support for boom arms.
The accessories and package of excavator long boom arm are subjected to our final confirmation.





FAQ



1. Who are we?

We are based in Guangdong, China, start from 2018, sell to Southeast Asia(40.00%), Mid East(10.00%), North America(10.00%), South Asia(8.00%), Eastern Europe(8.00%), Oceania(8.00%), Eastern Asia(5.00%), Africa(5.00%), South America(4.00%), Northern Europe(2.00%). There are total about 51-100 people in our office.

2. How can we guarantee quality?

Always a pre-production sample before mass production;
Always final inspection before shipment;

3. What can you buy from us?

Excavator Long Reach Boom, Excavator Telescopic Arm, Excavator Demolition Arm, Excavator Grapple, Excavator Bucket

4. Why should you buy from us not from other suppliers?

With more than 60 employees, it has its own unique research and development team in more than 10000 square meters of steel structure standardized plant. The annual production of various arms is up to 600 sets, and various buckets are 6000 pieces.

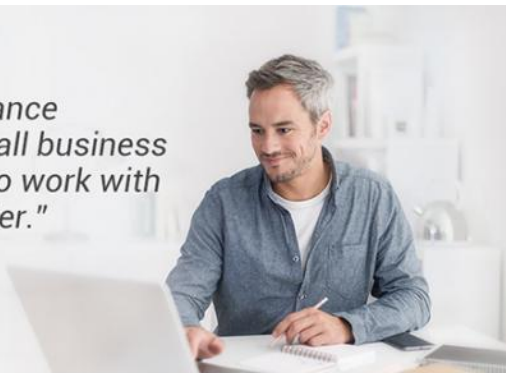
5. What services can we provide?

Accepted Delivery Terms: FOB, CIF, EXW, CIP;
Accepted Payment Currency: USD, CNY;
Accepted Payment Type: T/T;



*"Trade Assurance
gave our small business
confidence to work with
a new supplier."*

[Learn More](#)



HOT CUSTOMIZED PRODUCTS

Goods that people like to customize



Long Reach Excavator Boom

- Long Reach Boom /
- Three Sections Demolition Arm /
- Demolition Extension Arm /

[Customize now](#)



Demolition Boom

- Long Demolition Boom /
- Super Long Demolish Distance /
- Safe Demolition /

[Customize now](#)



Telescopic Boom

- Three-stage Extension /
- Super Long Control Distance /
- Flexible Expansion /

[Customize now](#)



Bucket

- Replaceable Fork Tines /
- Heavy Durable Bucket /



Wood Grabber

- Mechanical Hydraulic Shear /
- Excavator Rotating Grapple /



Jiangmen Kaiping Zhonghe Machinery Manufacturing Co., Ltd



+86 13822325403



aria@excavatorlongarm.com



excavatorlongarm.com

9 Huancui West Road, Cuishanhu New Area, Kaiping City, Guangdong Province, China