



360 Degree Rotating Hydraulic Orange Peel Grapple Hydraulic Grapples Construction Machinery Parts Rock Grapple

Our Product Introduction

for more products please visit us on excavatorlongarm.com

Basic Information

- Place of Origin: Guangdong, China
- Brand Name: Zhonghe
- Certification: CE
- Model Number: LHZ01
- Minimum Order Quantity: 1 piece
- Price: \$6600/pieces
- Packaging Details: wooden case
- Delivery Time: 15-20 work day
- Payment Terms: T/T
- Supply Ability: 50 Piece/Pieces per Month

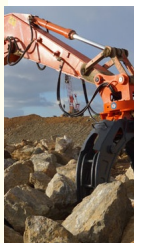
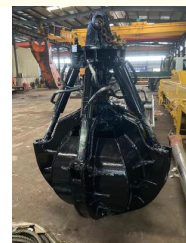
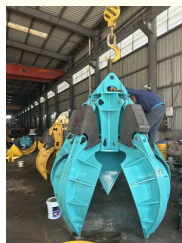


Product Specification

- Name: Excavator Attachments
- Type: Excavator Orange Peel Grapple
- Application: Load And Unload Bulk Stone, Steel, Wood And Other Materials
- Core Components: Bearing
- Suitable Excavator(ton): 15-18T
- Warranty: 6 Months
- Material: NM500, 42CRMO
- After-sales Service Provided: Online Support
- Weight: 1000kg
- Condition: 100%new
- Packing: Wooden Box
- Oem: Support
- Quality: High Guarantee



More Images



Our Product

Product Description

Excavator Orange Peel Grapple



Orange Peel Grapple Customization

- *Applicable for all brand excavator.
- *Color, material can do according to you.
- *Made of Q355B and NM400 steel with good strength and rigidity.



ZHONGHE MACHINERY

Orange Peel Grapple

Applicable for:

This equipment is designed for efficient loading, unloading, and handling of bulk materials such as stone, steel, wood, and other materials.



Key features:

Sturdy Construction:

The equipment is built with a shed made of **NM500**, ensuring a lightweight design without compromising wear resistance.

Robust Pin Material:

The pin is crafted from **42CrMo alloy steel** and incorporates a **built-in oil passage**. This design enhances its strength and toughness.

Swiss-imported Rotary Motor:

The equipment is equipped with a **rotary motor sourced from Switzerland**. It features a vertical cart motor rotation system, enabling 360-degree rotation and includes a cart brake function.

Superior Cylinder Design:

The cylinder adopts a **honing tube** and **employs imported HALLITE oil seals**, resulting in a shorter working cycle and a longer operational lifespan.

| Model | Unit | ZH04A | ZH06A | ZH08A | ZH06B | ZH08B |
|--------------------------|-------|---------|----------|-----------|----------|-----------|
| No.of Jaw | piece | 4/5 | 4/5 | 4/5 | 4/5 | 4/5 |
| Suitable Excavator | ton | 6-9 | 10-17 | 18-25 | 10-17 | 18-25 |
| Weight | kg | 355/420 | 900/1000 | 1650/1900 | 850/1000 | 1700/1950 |
| Max Open Jaw | mm | 1200 | 1600 | 2050 | 1900 | 2500 |
| Height of Opened Grapple | mm | 1000 | 1500 | 1700 | 1550 | 2000 |
| Working Pressure | bar | 200 | 260 | 320 | 260 | 320 |
| Working Flow | lpm | 50-100 | 60-120 | 200-250 | 60-120 | 200-250 |

Advanatages of Orange Peel Grapple



Sturdy Construction:

The equipment is built with a shed made of NM500, ensuring a lightweight design without compromising wear resistance.

Robust Pin Material:

The pin is crafted from 42CrMo alloy steel and incorporates a built-in oil passage. This design enhances its strength and toughness.



Swiss-imported Rotary Motor:

The equipment is equipped with a rotary motor sourced from Switzerland. It features a vertical cart motor rotation system, enabling 360-degree rotation and includes a cart brake function.

Superior Cylinder Design:

The cylinder adopts a honing tube and employs imported HALLITE oil seals, resulting in a shorter working cycle and a longer operational lifespan.



Some pictures of orange peel grapple





CE certification & Utility model patent certificates



Steel plates certifications

[illegible][illegible]



Founded in 2018, Zhonghe heavy industry independently develops and produces construction machinery parts such as excavator lengthening arm, mountain pulling arm, two-stage telescopic arm, sliding arm, three-stage telescopic arm, three-stage demolition arm, rock arm, tunnel arm, bucket, pile driving arm, wood grabber, steel grabber and scarifier. It is widely used in weathered stone crushing, subway construction, forestry logging, municipal pipeline engineering, river dredging, building demolition, Larsen steel sheet pile driving and pulling, pile foundation engineering, resource recovery and other engineering industries. The products are sold in more than 40 countries and regions. Provide one-year after-sales service with after-sales warranty and deliver on time. 24-hour online service can provide OEM production.



Kaiping Zhonghe Machinery Manufacturing Co., Ltd. was established in 2018 as a manufacturing and trading consortium, specializing in customizing various excavator arm frames and accessories, such as each excavator long arm, disassembly arm, 2-3 section telescopic arm, tunnel arm, standard/rock bucket, gripper, ripper, etc., best-selling in over 40 countries and regions.



14000m² Workshop

We have more than 14000m² steel structure workshop with lots of high precision processing equipments.



R&D Team

We use precision drawing software to achieve the max working range under the premise of safe operation.



Skillful Workers

There are more than 60 skillful staffs, 30 welding workers with over 5 years welding experience.



Customized

1. Fit all brand.
2. Color, length, material are customized.
3. Extra pipeline can be added.



Prompt Lead Time

1. Our lead time is 7-15 days.
2. Our annual output of excavator boom arms can reach 600 sets.



100% Service

1. Online support within 24 hours.
2. Appointment video technical support.

Our team



Our technical staff



Main Products



Exhibitions



Production Advantages

The equipments we have:



Large double-sided boring machine



CNC plasma cutting machine



Automatic edge milling machine



Environmentally friendly spray booth



01»

Panel is cut by
CNC plasma
machine with
less deformation



«02

Tolerance within
5-10um, ensure
the accuracy of
hole

03 »

GMAW-Gas
Metal Arc
Welding



« 04

Environmentally
friendly verified
spraying room.
Professional and
beautiful paint
finish

Production Process



Ingenious craftsmanship / Quality assurance

Zhonghe Machinery Production Steps



Draw design



Manufacturing



Plate cutting



Machining



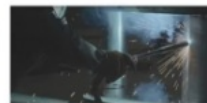
Mechanical
beveling



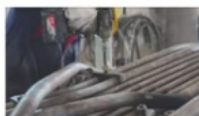
Riveting, bending



Welding



Gas shielded
welding



Pipeline layout



Spray paint



Test



Arrange shipment

Packing&Delivery



Our products have been sold to more than 60 countries, and our transportation methods include sea transportation, land transportation, and air transportation. Our packaging is wooden box packaging or stretch film packaging. The goods will be packed before shipment and then loaded into the container to ensure the safety of the goods.

FAQ

1. Who are we?

We are based in Guangdong, China, start from 2018, sell to Southeast Asia(40.00%), Mid East(10.00%), North America(10.00%), South Asia(8.00%), Eastern Europe(8.00%), Oceania(8.00%), Eastern Asia(5.00%), Africa(5.00%), South America(4.00%), Northern Europe(2.00%). There are total about 51-100 people in our office.

2. How can we guarantee quality?

Always a pre-production sample before mass production;

Always final inspection before shipment;

3. What can you buy from us?

Excavator Long Reach Boom, Excavator Telescopic Arm, Excavator Demolition Arm, Excavator Grapple, Excavator Bucket

4. Why should you buy from us not from other suppliers?

With more than 60 employees, it has its own unique research and development team in more than 10000 square meters of steel structure standardized plant. The annual production of various arms is up to 600 sets, and various buckets are 6000 pieces.

5. What services can we provide?

Accepted Delivery Terms: FOB, CIF, EXW, CIP

Accepted Payment Currency: USD, CNY;

Accepted Payment Type: T/T;



Jiangmen Kaiping Zhonghe Machinery Manufacturing Co., Ltd



+86 13822325403



aria@excavatorlongarm.com



excavatorlongarm.com

9 Huancui West Road, Cuishanhu New Area, Kaiping City, Guangdong Province, China