



Kobelco Excavator Standard Arm Long Reach Arm for Excavator

Our Product Introduction

for more products please visit us on excavatorlongarm.com

Basic Information

- Place of Origin: Guangdong Province, China
- Brand Name: Kaiping Zhonghe Machinery Manufacturing Co. Ltd
- Certification: CE, Patents, ISO9001
- Model Number: SSB009
- Minimum Order Quantity: 1 set / piece
- Price: USD 199.00-USD6999.00
- Packaging Details: Bubble / Wooden Cases
- Delivery Time: 5-25/works
- Payment Terms: T/T, L/C
- Supply Ability: 5 sets per week

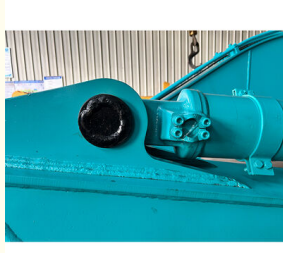
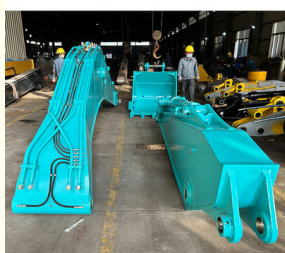


Product Specification

- Material: Q355B Or Q690D Or As You Request
- Color: Red, Yellow, Blue White Customized
- Excavator Model: 20ton 30ton 35ton 55ton 60ton
- Product Name: Excavator Standard Arm Standard Boom
- After-sales Service: YES
- Technical Support: YES



More Images

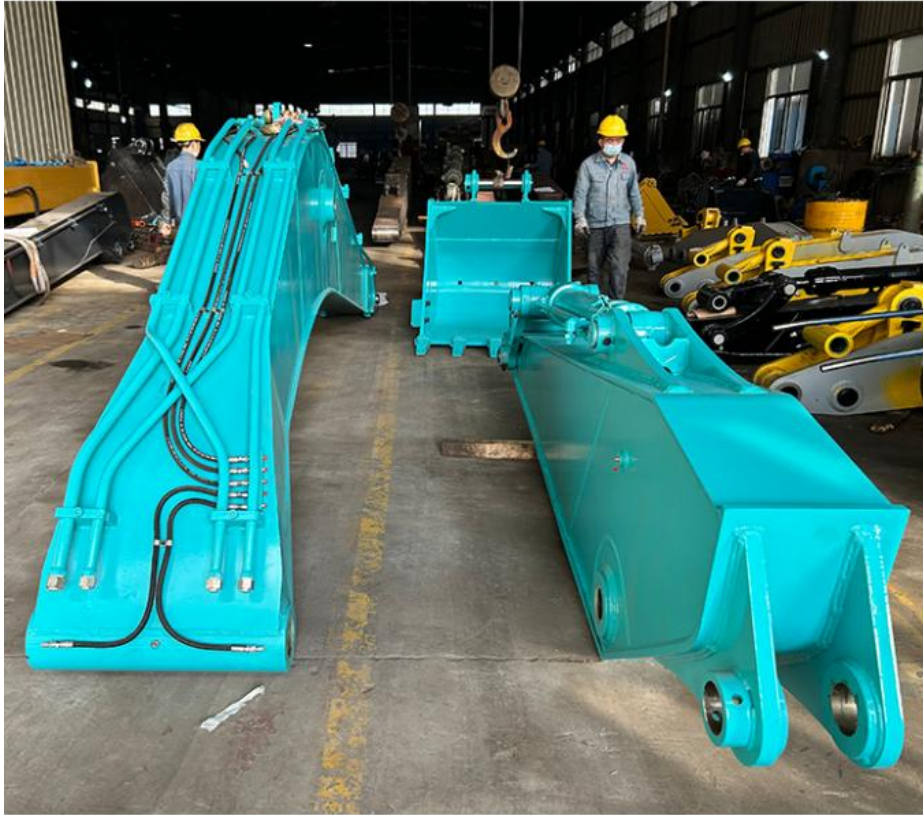


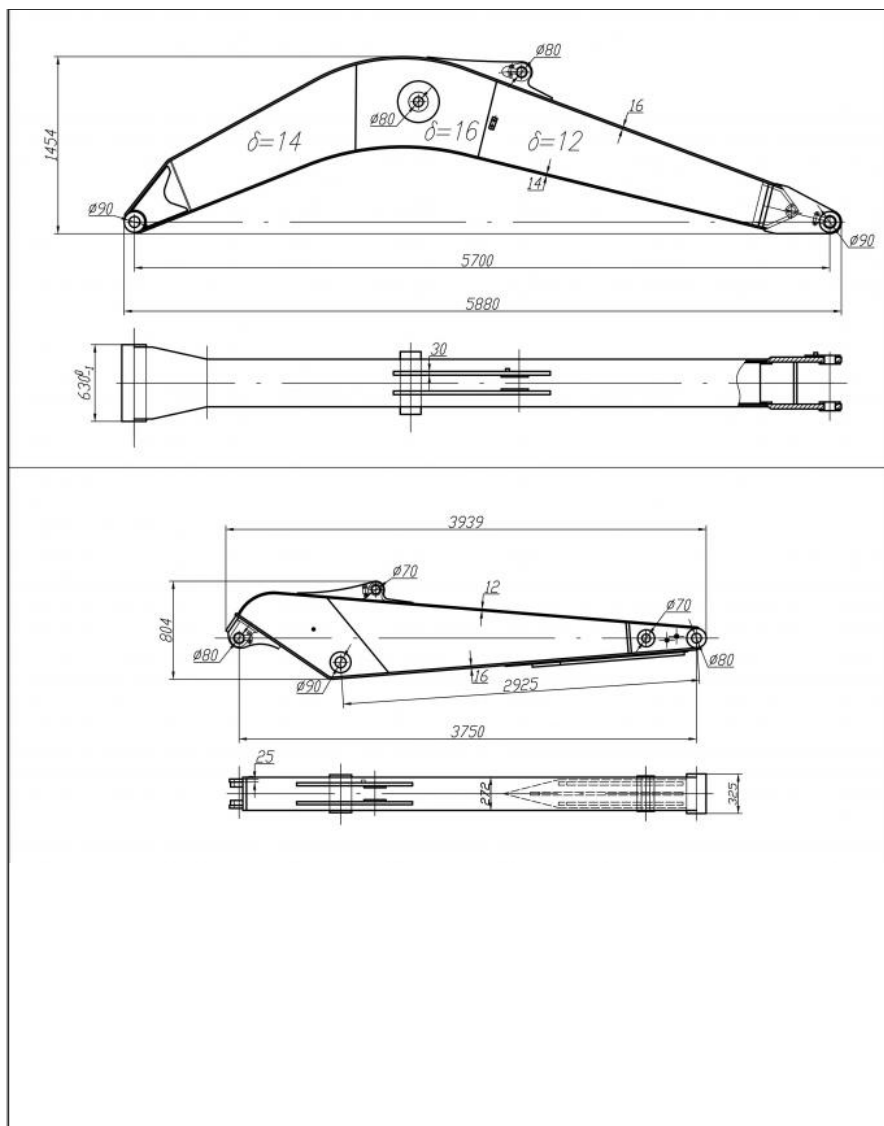
Product Description

Premium Excavator Standard Arm & Boom: Unmatched Durability by Kaiping Zhonghe Machinery

Excavator Standard Arm Product Overview:

Introducing the Excavator Standard Arm & Boom from Kaiping Zhonghe Machinery, a leader in the manufacturing of industry-standard excavator components. Our products are designed with the highest quality materials to meet the demands of intensive excavation tasks, ensuring exceptional performance and longevity on every job site.





Key Features of Excavator Arm with Bucket

Heavy-Duty Construction: Engineered from high-strength steel, our standard arm and boom are built to withstand the rigors of heavy lifting and demanding excavation work, offering an extended lifespan that reduces the need for frequent replacements.

Innovative Design: The superior engineering provides an optimal balance of weight and strength, enhancing your excavator's efficiency while ensuring safer operation in challenging environments.

Versatile Compatibility: Our excavator arms and booms are compatible with a wide range of excavator models, providing seamless integration and versatility across your fleet.

Suitable for Various Excavators

| Excavator Model(ton) | Length of Each Sections(m) | Total Length(m) |
|----------------------|----------------------------|-----------------|
| 6T | 3.7 | 5.9 |
| | 2.2 | |
| 10T | 4.4 | 7.31 |
| | 2.91 | |
| 12T | 4.6 | 7.725 |
| | 3.125 | |
| 20T | 5.7 | 9.45 |
| | 3.75 | |
| 22T | 5.85 | 9.81 |
| | 3.96 | |
| 24T | 5.85 | 9.81 |
| | 3.96 | |
| 27T | 6.15 | 10.2 |
| | 4.05 | |
| 30T | 6.47 | 10.59 |
| | 4.118 | |
| 33T | 6.51 | 10.72 |
| | 4.21 | |
| 35T | 6.43 | 10.62 |
| | 4.185 | |
| 40T | 7.05 | 11.48 |
| | 4.425 | |
| | 7.12 | |

Welcome to send your excavator model to us! Suitable excavator model drawing will be sent.

CHOICE OF LANGUAGE



Feedback of Excavator Standard Arm From Clients



Benefits of Excavator Standard Arm Standard Boom

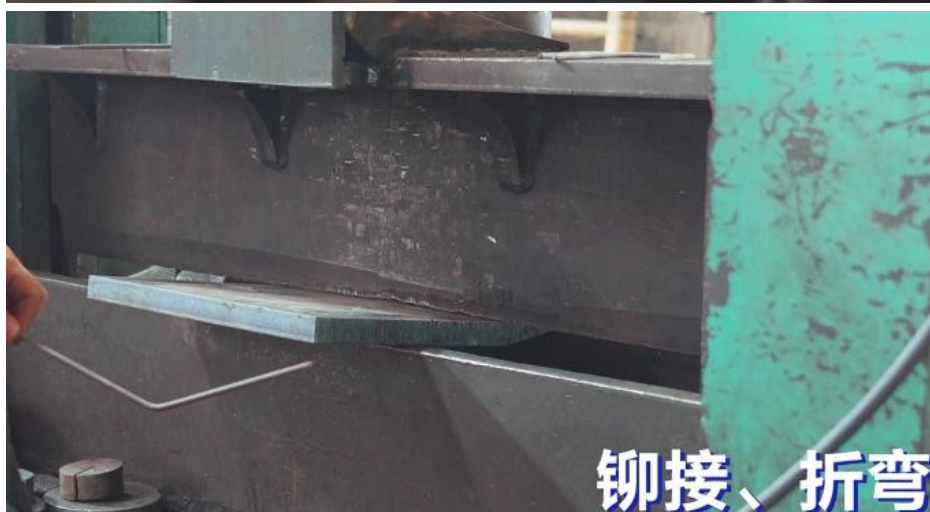
Extended Lifespan: The robust materials and craftsmanship significantly increase the service life of the arm and boom, contributing to lower overall maintenance costs.

Improved Operational Efficiency: The precise design allows for faster cycle times and enhanced accuracy, boosting productivity and project turnaround.

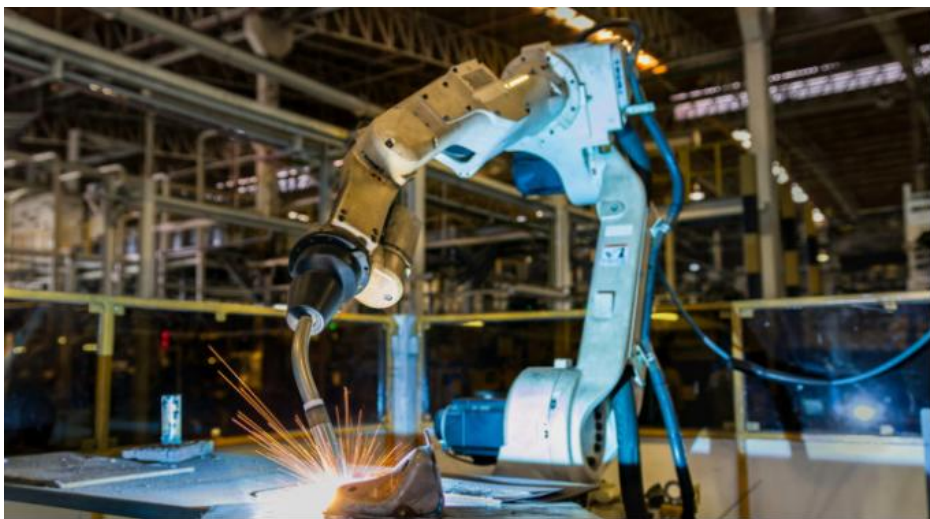
Easy Installation Process: Designed to be user-friendly, our products facilitate quick and easy installation, getting you back to work with minimal downtime.



机械开坡口



铆接、折弯





Frequently Asked Questions (Q&A)

Q1: What makes your Excavator Standard Arm & Boom stand out in the market?

Our commitment to quality, rigorous testing, and advanced engineering techniques ensure that our products offer unmatched durability and performance, setting us apart from competitors.

Q2: How do I know if your Excavator Standard Arm & Boom will fit my machine?

We provide a detailed compatibility chart for a wide array of excavator models. Feel free to contact our customer service for any specific compatibility questions.

Q3: Can you provide information on maintenance for the Excavator Standard Arm & Boom?

Regular inspections and keeping the attachment clean will enhance its longevity. We recommend following the maintenance guidelines included with your purchase for optimal performance.

Q4: Is there a warranty on this product?

Yes, we offer a comprehensive warranty that covers manufacturing defects, providing peace of mind as you invest in our high-quality excavator attachments.

Why Choose Kaiping Zhonghe Machinery?

Kaiping Zhonghe Machinery is synonymous with durability and trust in the excavator accessories market. Our long-standing commitment to innovation and quality ensures that you receive the best products that meet and exceed industry standards.

Conclusion

Enhance your excavation capabilities with the Excavator Standard Arm & Boom from Kaiping Zhonghe Machinery. Invest in reliable equipment that boosts your productivity and offers a long service life. Reach out to us today for more information on pricing and compatibility!



KAIPING ZHONGHE MACHINERY MANUFACTURING CO. LTD



Aria

Whatsapp: +86 13822325403

Email: aria@excavatorlongarm.com

Web: www.excavatorlongarm.com



Jiangmen Kaiping Zhonghe Machinery Manufacturing Co., Ltd



+86 13822325403



aria@excavatorlongarm.com



excavatorlongarm.com

9 Huancui West Road, Cuishanhu New Area, Kaiping City, Guangdong Province, China