



## Excavator Standard Arm with Bucket for PC200 Cat320 Kobelco

Our Product Introduction

for more products please visit us on [excavatorlongarm.com](http://excavatorlongarm.com)

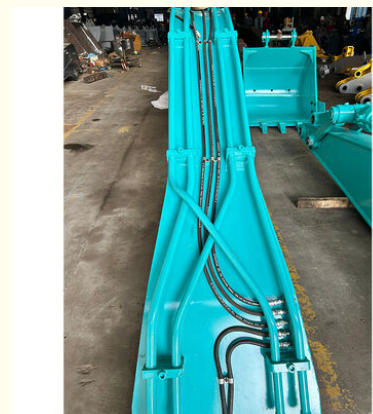
### Basic Information

- Place of Origin: Guangdong Province, China
- Brand Name: Kaiping Zhonghe Machinery Manufacturing Co. Ltd
- Certification: CE, Patents, ISO9001
- Model Number: SSB018
- Minimum Order Quantity: 1 set / piece
- Price: USD 199.00-USD6999.00
- Packaging Details: Bubble / Wooden Cases
- Delivery Time: 5-20/works
- Payment Terms: T/T, L/C
- Supply Ability: 5 sets per week

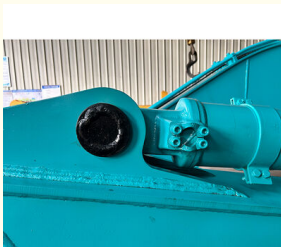


### Product Specification

- After-sales Service: YES
- Suitable Excavators: 20ton Or Above Excavator
- Color: Red, Yellow, Blue White Customized
- Quality: Top 1
- Material: Q355B Or Q690D Or As You Request
- Warranty: 6 Months



### More Images

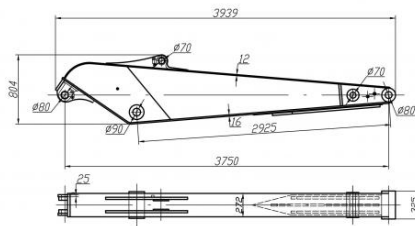
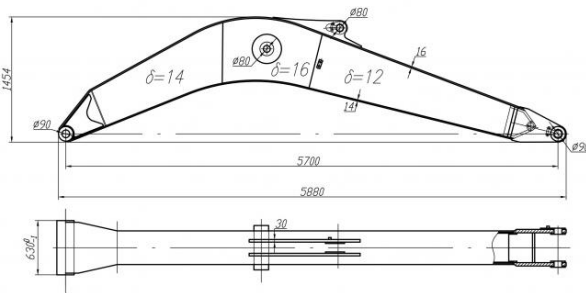


## Product Description

### High-Demand Excavator Standard Arm & Boom: Built to Last by Kaiping Zhonghe Machinery

#### Product Overview of One Set of Excavator Arm

Kaiping Zhonghe Machinery proudly presents its high-demand Excavator Standard Arm & Boom, engineered for superior performance and longevity. Designed specifically for tough excavation tasks, our excavator arms and booms have a reputation for reliability and durability, making them a preferred choice for construction professionals.



#### Key Features of Excavator Standard Arm Standard Boom

**Robust Construction:** Crafted from premium-grade steel, our standard arm and boom are designed to endure extreme conditions and heavy workloads, ensuring a longer service life.

**Advanced Engineering:** Utilizing state-of-the-art technology, our products offer excellent strength-to-weight ratios, enhancing your excavator's performance without compromising fuel efficiency.

**Universal Compatibility:** Our excavator arms and booms fit a wide variety of models, making it easy for operators to enhance their existing equipment without the need for extensive modifications.

Excavator Model(ton)	Length of Each Section(m)	Total Length(m)
6T	3.7	5.9
	2.2	
10T	4.4	7.31
	2.91	
12T	4.6	7.725
	3.125	
20T	5.7	9.45
	3.75	
22T	5.85	9.81
	3.96	
24T	5.85	9.81
	3.96	
27T	6.15	10.2
	4.05	

**Welcome to send your excavator model to us! Model drawing will be sent soon.**

#### **Benefits of One Set of Excavator Standard Arm Standard Boom**

**Extended Service Life:** Built to withstand wear and tear, our excavator arm and boom minimize replacement frequency, reducing long-term costs.

**Increased Productivity:** Enjoy improved efficiency and operational speed, allowing you to complete projects faster and with greater precision.

**User-Friendly Installation:** Designed for easy attachment, our products enable quick installation, minimizing downtime and maximizing productivity on your job site.



#### **Frequently Asked Questions (Q&A)**

##### **Q1: How long can I expect the Excavator Standard Arm & Boom to last?**

Our products are built for durability and designed to withstand demanding conditions, providing you with a significantly longer service life compared to standard equipment.

##### **Q2: What excavator models are compatible with your standard arm and boom?**

Our Excavator Standard Arm & Boom are designed for universal compatibility across a wide range of vehicle models. For specific compatibility inquiries, please refer to our detailed compatibility chart or contact our customer service team.

##### **Q3: Is installation complicated or time-consuming?**

No! Our products are designed for quick and easy installation, requiring minimal tools. This means less downtime and a faster return to work on your projects.

##### **Q4: What makes Kaiping Zhonghe Machinery a trusted manufacturer?**

As a leading manufacturer of excavator arms and booms, we prioritize quality and customer satisfaction. Our commitment to rigorous testing and continuous improvement ensures our products meet the highest industry standards.

#### **Why Choose Kaiping Zhonghe Machinery?**

With years of experience and a proven track record, Kaiping Zhonghe Machinery offers reliability and quality in every product. Our Excavator Standard Arm & Boom are engineered for performance and longevity, making them an essential addition to your heavy machinery lineup.

## Front end design of arm

Ours



The side panel at the front end of our arm is thickened. The force at this position is relatively large, so thickening of this position is very necessary.

Others



Other manufacturers do not thicken this position.

VS

## Design of the rear seat plate of the arm

Ours



Our plate is thickened because this position is connected to the boom cylinder and is the most stressed part of the arm, so we thicken the plate to avoid cracking at this position.

Others



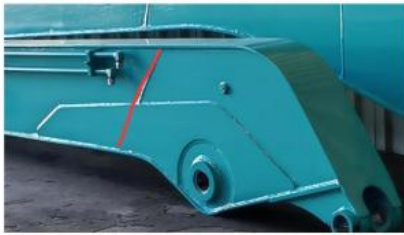
Other manufacturers do not reinforce and thicken this location. After the excavator has been working for a long time, this location is prone to quality problems.

VS



### Design of arm side panel

Ours



Others



VS

The thick plate and thin plate of our arm side plate are directly connected by diagonal connection. This design can effectively avoid excessive stress concentration and cracking at the interface.

Other manufacturers use straight-line docking at this location, which is not reasonable enough, with excessively concentrated stress and prone to cracking.

### Butt joint design of arm upper cover

Ours



Others



VS

The upper cover of our arm is generally not butt-jointed. Even if it is butt-jointed, we will stick a butt-jointed plate inside the cover to ensure that the welding can be fully melted. Our butt-jointed position is generally selected in the middle of the ear seat, so that there will be no problems.

Other manufacturers dock at other locations, which may cause cracking at the docking interface later.

### Conclusion

Elevate your excavation capabilities with Kaiping Zhonghe Machinery's Excavator Standard Arm & Boom. Invest in durable, high-performance equipment that enhances productivity and stands the test of time. Contact us today for pricing and compatibility information!



KAIPING ZHONGHE MACHINERY MANUFACTURING CO. LTD

Whatsapp: +86 13822325403

Email: [aria@excavatorlongarm.com](mailto:aria@excavatorlongarm.com)

Web: [www.excavatorlongarm.com](http://www.excavatorlongarm.com)



Aria





**Jiangmen Kaiping Zhonghe Machinery Manufacturing Co., Ltd**



+86 13822325403



aria@excavatorlongarm.com



excavatorlongarm.com

9 Huancui West Road, Cuishanhu New Area, Kaiping City, Guangdong Province, China