



## Kobelco Excavator Standard Arm with Bucket

Our Product Introduction

for more products please visit us on excavatorlongarm.com

### Basic Information

- Place of Origin: Guangdong Province, China
- Brand Name: Zhonghe Machinery
- Certification: CE, Patents, ISO
- Model Number: ZH-017
- Minimum Order Quantity: 1 set / piece
- Price: USD 199.00-USD7999.00
- Packaging Details: Bubble / Wooden Cases / Others As You Request
- Delivery Time: 4-25/works
- Payment Terms: T/T, L/C
- Supply Ability: 15 sets per week

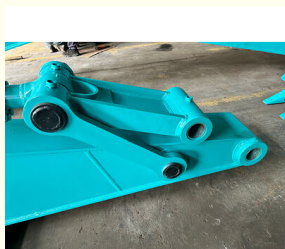


### Product Specification

- Features: Longer Service Life-span
- Material: Q355B Or Q690D Or As You Request
- After-sales Service: YES
- Technical Support: YES
- Warranty: 6 Months For Boom And Arm, 3 Months For Bucket
- Suitable Excavators: 6Ton - 200Ton
- Quality: Top 1
- Color: Red, Yellow, Blue White Customized



### More Images



## Product Description

### Excavator Standard Arm: The Essential Attachment for Heavy-Duty Excavation

#### Excavator Standard Arm Standard Boom Product Overview:

Elevate your excavation operations with our top-tier Excavator Standard Arm. Designed for heavy-duty performance and built to last, this excavator attachment is essential for professionals seeking efficiency and reliability in tough job site conditions.



#### Key Features of One Set of Standard Arm Standard Boom for Excavator:

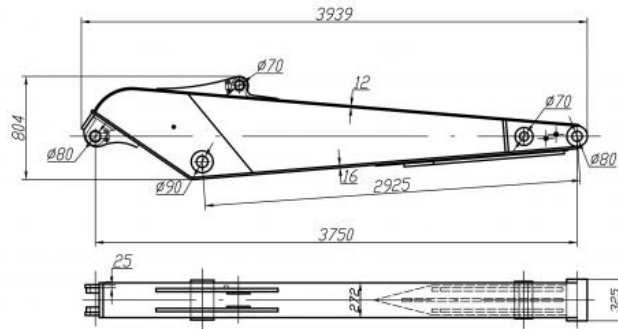
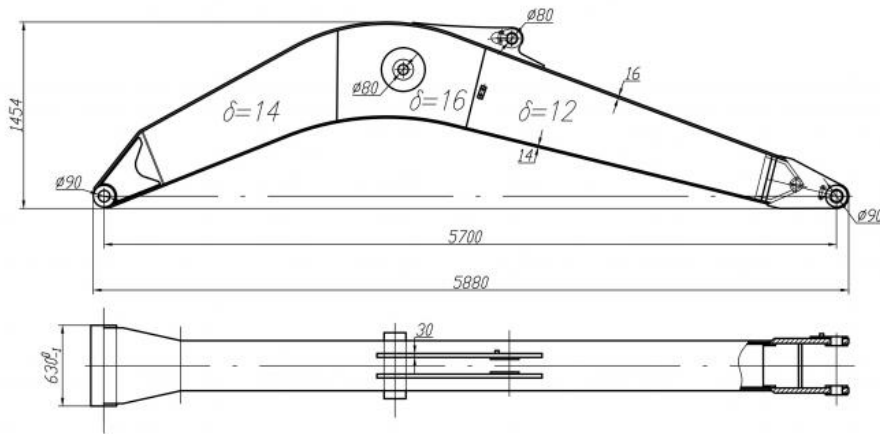
**Durable Materials:** Constructed from high-strength steel, the Excavator Standard Arm is built to resist wear and tear, ensuring long-lasting performance even in challenging environments.

**Enhanced Performance:** Our precision-engineered design provides excellent control and maneuverability, making it perfect for tasks such as digging, lifting, and transporting materials.

**Universal Fit:** Compatibility with various excavator models means you can enhance your existing equipment without expensive modifications.

**Weight Efficiency:** The lightweight design allows for improved operational efficiency and reduced fuel consumption during use.

**Model drawing of one set of standard arm standard boom for PC200**



### Every steel plate has certifications

Our steel plates are purchase from BaoGang Company which is a big and famous steel material company.

宝钢股份有限公司		产品质量证明书	
Bao Gang Steel Co., Ltd.		INSPECTION CERTIFICATE	
产品名称	挖掘机标准臂	规格	1454*5700
材料牌号	Q235B	重量	1.2t
生产厂家	宝钢股份有限公司	检验日期	2023.10.10
检验员	张三	检验地点	宝钢股份有限公司
备注	本证明书仅对材料质量负责，不对材料的使用负责。		

宝钢股份有限公司		产品质量证明书	
Bao Gang Steel Co., Ltd.		INSPECTION CERTIFICATE	
产品名称	挖掘机标准臂	规格	1454*5700
材料牌号	Q235B	重量	1.2t
生产厂家	宝钢股份有限公司	检验日期	2023.10.10
检验员	张三	检验地点	宝钢股份有限公司
备注	本证明书仅对材料质量负责，不对材料的使用负责。		

### Benefits of Standard Arm Standard Boom for Excavator:

**Maximized Productivity:** Benefit from faster project completion times with an attachment designed for optimal operational efficiency.

**Cost-Effective Solution:** Upgrade your excavator without breaking the bank, making it an economical choice for contractors and industry professionals.

**Reliable Control:** Achieve superior accuracy during operation, leading to better results in all excavation tasks.





#### Frequently Asked Questions (Q&A)

**Q1: What excavator models are compatible with the standard arm?**

Our Excavator Standard Arm is designed to fit a wide range of models from leading manufacturers. Please consult our compatibility guide or contact us for specific inquiries regarding your equipment.

**Q2: How easy is it to install the standard arm?**

Installation is straightforward and typically requires minimal tools. The user-friendly design ensures you can quickly attach it to your excavator, reducing downtime on your projects.

**Q3: What is the warranty on the Excavator Standard Arm?**

We offer a comprehensive warranty that covers manufacturing defects and ensures your investment is protected. Please refer to our warranty policy for full details.

**Q4: Can the standard arm be used for heavy lifting?**

Absolutely! The robust design and construction of the standard arm allow it to handle heavy lifting tasks with ease, making it perfect for construction sites and landscaping projects.

**Why Choose Our Excavator Standard Arm?**

Our commitment to quality and customer satisfaction sets us apart in the industry. With rigorous testing and exceptional support, we ensure that our Excavator Standard Arm meets the highest standards for performance and durability.

## 4. Certifications



#### Conclusion

Upgrade your excavation capabilities with our reliable and versatile Excavator Standard Arm. Enhance your productivity and achieve outstanding results in every project. Contact us today for pricing and compatibility information!



KAIPING ZHONGHE MACHINERY MANUFACTURING CO. LTD



Aria

Whatsapp: +86 13822325403

Email: [aria@excavatorlongarm.com](mailto:aria@excavatorlongarm.com)

Web: [www.excavatorlongarm.com](http://www.excavatorlongarm.com)



**Jiangmen Kaiping Zhonghe Machinery Manufacturing Co., Ltd**



+86 13822325403



[aria@excavatorlongarm.com](mailto:aria@excavatorlongarm.com)



[excavatorlongarm.com](http://excavatorlongarm.com)

9 Huancui West Road, Cuishanhu New Area, Kaiping City, Guangdong Province, China