

## Excavator 16m Demolition Boom High Reach Arm and Boom Demolition Arm for 20-25T Excavator

Our Product Introduction

for more products please visit us on excavatorlongarm.com

### Basic Information

- Place of Origin: Guangdong, China
- Brand Name: Zhonghe
- Certification: CE
- Model Number: CLB001
- Minimum Order Quantity: 1 piece
- Price: \$10000/pieces
- Packaging Details: Bubble bag packaging
- Delivery Time: 25-30 work day
- Payment Terms: T/T
- Supply Ability: 5 Piece/Pieces per Month

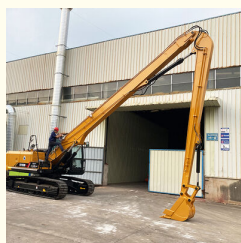


### Product Specification

- Part Name: Excavator Demolition Boom Arm
- Material: Q355B
- Applicable Industries: Energy & Mining & Demolition
- Suitable Excavator: 20-25Ton
- Length: 16m
- Warranty: 6 Months
- Condition: 100%new
- Quality: High-Quality
- MOQ: 1 PCS
- Packing: Standard Packing
- After-sales Service Provided: Online Video Support



### More Images



### Product Description

Our Product

## Excavator Three-section Demolition Boom



### Demolition Boom Customization

- \*Applicable for all brand excavator.
- \*Color, length, material can do according to you.
- \*Made of Q355B or Q690D steel with good strength and rigidity.



ZHONGHE MACHINERY

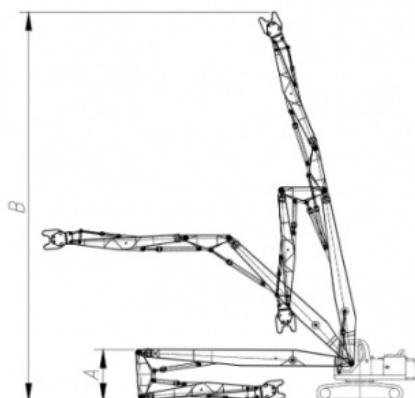
## Three-section Demolition Boom



Excavator demolition arm for demolition work often increase efficiency, reduce labor input, and reduce potential safety risks.

An excavator demolition arm generally refers to the demolition equipment on an excavator that can be attached to the arm of the excavator, allowing it to effectively carry out demolition work on building, structures or the other objects.

The equipment often includes powerful hydraulic systems to provide sufficient power and control to th perform demolition tasks with precision. Demolition arms may also be equipped witj various tools and attachments, such as demolition claws, breakers, scissors, etc. to handle different types and sizes of demolition projects.



### Standard configuration

1. Boom, arm and middle arm
2. Linkage assembly\*1 kit
3. Bucket cylinder(22 ton type)\*1
4. High pressure hoses\*18
5. Pins\*8
6. Stop valves\*10
7. Lubrication hoses\*5
8. Counterweight optional

Excavator (tons)	Total Length (mm)	(A) Transport Height(mm)	(B) Maximum Lifting Height(mm)	Add Weight (tons)
25	16000	3160	14900	4
30	18000	3300	17000	4.5
35	20000	3300	19000	4.5
40	22000	3400	21050	5
45	24000	3400	23100	5
50	26000	3400	25100	5



## Demolition Arm Configuration

One set of demolition boom, 24 high-pressure hoses, 8 pins, a connecting rod assembly, 10 stop valves, and a bucket cylinder.



### Features of Three-Section Boom

1. Customizable length based on machine type and demolition height.
2. Material options (Q355B, Q550D, Q690D) and graphite bronze bushings based on working conditions.
3. Precision seamless pipes with custom thickened joints and argon welding ensure 100% leak-proof performance.
4. The opening angle of the boom arm can reach 180 degrees, the overall proportion is reasonable, and the belt hammer can be rotated.
5. The entire boom arm is post-weld bored, achieving precision comparable to original arms, ensuring superior overall quality.
6. Provide a full set of modification design solutions, including double/triple valves, counterweights, foot switch installation and other overall modification services.



## Details Advantage



More firmly due to whole plate bending. Add reinforcement plate at the stress position.

01

02

Adopt 90mm pin to avoid pin breakage.

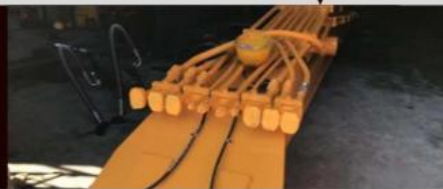


The opening angle of boom arm can reach 180 degree.

03

04

Seamless precision steel pipe. Three layers with four passes welding.



Graphite alloy copper sleeve. The boom seat sleeve adopts all in one molding process.

05





**JCB360 23M**



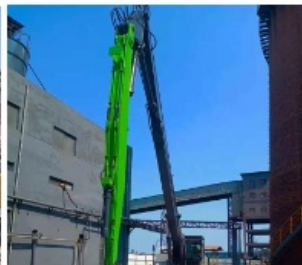
**Komatsu PC450 25M**



**Liugong 948E 23M**



**Komatsu PC550 26M**



**Zoonlion ZE370 24M**



**Caterpillar CAT349 25M**



## >> APPLICABLE BRANDS <<

KOMATSU CAT HITACHI VOLVO SUMITOMO

KOBELCO DOOSAN CASE KATO HYUNDAI

JCB LIEBHERR ATLAS TEREX Kubota YANMAR TAKEUCHI IHISCE

SANY SDLG 山东临工 STRONG JCM SHANTUI 福田雷沃重工 LOVOL 厦工 XGMA LUGONG 柳工

LISHIDE 力士德 ZOOMLION XCMG LONKING 龙工 SUNWARD 山河智能

## >> COMPANY PROFILE <<

### Kaiping Zhonghe Machinery Manufacturing Co., Ltd

Founded in 2018, Zhonghe heavy industry independently develops and produces construction machinery parts such as excavator lengthening arm, mountain pulling arm, two-stage telescopic arm, sliding arm, three-stage telescopic arm, three-stage demolition arm, rock arm, tunnel arm, bucket, pile driving arm, wood grabber, steel grabber and scarifier.



It is widely used in weathered stone crushing, subway construction, forestry logging, municipal pipeline engineering, river dredging, building demolition, Larsen steel sheet pile driving and pulling, pile foundation engineering, resource recovery and other engineering industries. The products are sold in more than 40 countries and regions. Provide one-year after-sales service with after-sales warranty and deliver on time. 24-hour online service can provide OEM production.



## Our Team

The power of knowledge, the power of the power of unity and dedication, we will gain.



## Zhongehe Machinery

Our company is specialized in excavator long reach boom arm, standard arm, pile driving arm, two or three section demolition boom, tunnel arm, rock arm, quick hitch, tilting bucket, rock ripper, mechanical grapple, log grab, orange peel grapple, clamp bucket, rock bucket, clamshell bucket, multi crusher, single cylinder shear, rock breaker, pile hammer.

All products support customization, and customized products are suitable for all excavator brands.



### 14000m<sup>2</sup> Workshop

We have more than 14000m<sup>2</sup> steel structure workshop with lots of high precision processing equipments.



### R&D Team

We use precision drawing software to achieve the max working range under the premise of safe operation.



### Skillful Workers

There are more than 60 skillful staffs, 30 welding workers with over 5 years welding experience.



### Customized

1. Fit all brand.
2. Color, length, material are customized.
3. Extra pipeline can be added.



### Prompt Lead Time

1. Our lead time is 7-15 days.
2. Our annual output of excavator boom arms can reach 600 sets.



### 100% Service

1. Online support within 24 hours.
2. Appointment video technical support.



## >> EXHIBITION <<



## >> PRODUCT CATEGORY <<



Long Reach Boom



Two-Section Telescopic Arm



Three-Section Telescopic Arm



Pile Driving Arm



Sliding Arm



Tunnel Arm



Demolition Boom



Rock Arm



## PRODUCT CATEGORY



Standard Bucket



Rock Bucket



Clamshell Bucket



Rock Ripper



Sliding Arm



Skeleton Bucket



Ditch Cleaning Bucket



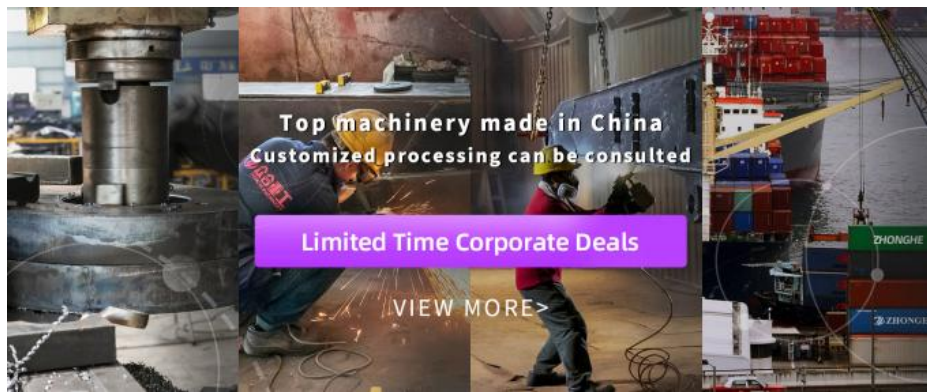
Orange Peel Grapple



Root Rake

## CERTIFICATIONS





## » PRODUCTION ADVANTAGES «

Our factory has a complete range of production equipment, which is conducive to the production of our products, good quality and ensures product accuracy.

1. Panel is cut by CNC plasma machine with less deformation.
2. Tolerance within 5-10um, ensure the accuracy of hole .
3. Environmentally friendly verified spraying room.
4. GMAW-Gas Metal Arc Welding.
5. Plasma cutting machines, boring machines, beveling machines, bending machines, etc. ensure accuracy.



Large double-sided floor boring machine



CNC plasma cutting machine



Automatic edge milling machine



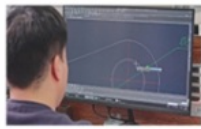
Environmentally friendly spray booth

# PRODUCTION PROCESS



Ingenious craftsmanship / Quality assurance

## Zhonghe Machinery Production Steps



Draw design



Manufacturing



Plate cutting



Machining



Mechanical beveling



Riveting, bending



Welding



Gas shielded welding



Pipeline layout



Spray paint



Test



Arrange shipment

## Quality Control

Post-welding Testing

Accuracy Testing

Weld bead testing

Testing before send out goods

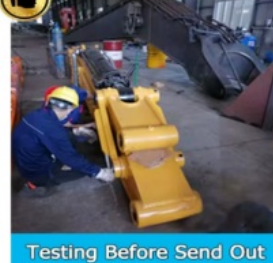
Operation Testing



Accuracy Testing



Weld Bead Testing



Testing Before Send Out



Operation Testing



Post-welding Testing

## What We Have

1. Compatible with all makes and models of excavators.
2. All welding seams are tapered 45 degrees before welding in order to make the welding position more durable for long-term use.
3. Supply customization service according to customer requirements.
4. Additional applicable accessories can be added.
5. The gas welding is used for finishing, which makes the welding position more elegant and stable.

## What You Get

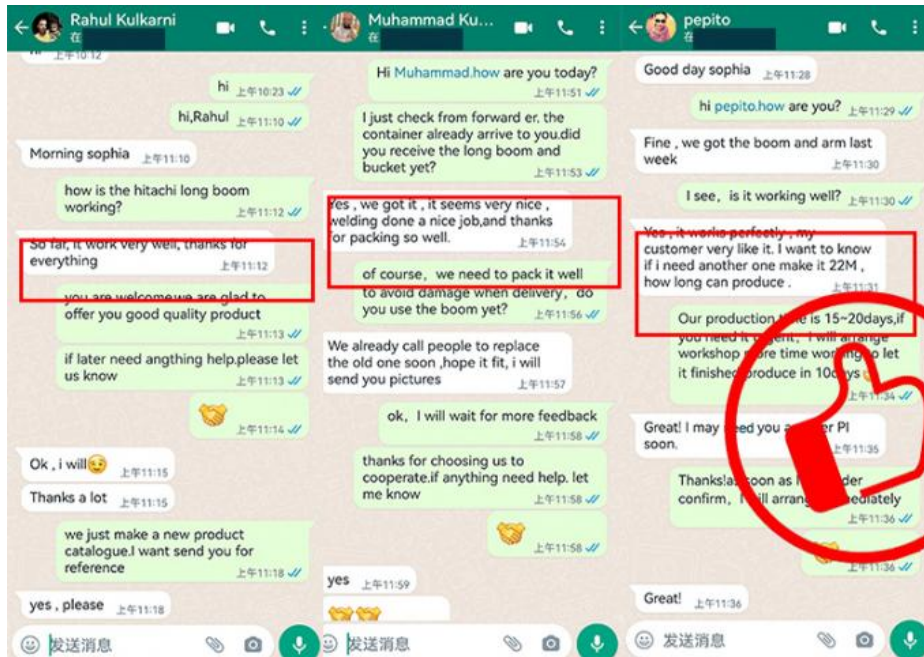
1. Superior quality and durable three-section demolition boom and arm.
2. Provide lifetime free and timely consultation about any products.
3. Provide working condition design sample drawing free of charge.
4. Heavy Duty boom and arm hit harder and last longer, without breaking your wallet.



# PACKAGE & SHIPPING



Package  
Bubble bag packing for most products;  
Wooden case for little products, like buckets;  
Iron frame support for boom arms.  
The accessories and package of excavator long boom arm are subjected to our final confirmation.





# FAQ



## 1. Who are we?

We are based in Guangdong, China, start from 2018, sell to Southeast Asia(40.00%), Mid East(10.00%), North America(10.00%), South Asia(8.00%), Eastern Europe(8.00%), Oceania(8.00%), Eastern Asia(5.00%), Africa(5.00%), South America(4.00%), Northern Europe(2.00%). There are total about 51-100 people in our office.

## 2. How can we guarantee quality?

Always a pre-production sample before mass production;  
Always final inspection before shipment;

## 3. What can you buy from us?

Excavator Long Reach Boom, Excavator Telescopic Arm, Excavator Demolition Arm, Excavator Grapple, Excavator Bucket

## 4. Why should you buy from us not from other suppliers?

With more than 60 employees, it has its own unique research and development team in more than 10000 square meters of steel structure standardized plant. The annual production of various arms is up to 600 sets, and various buckets are 6000 pieces.

## 5. What services can we provide?

Accepted Delivery Terms: FOB, CIF, EXW, CIP;  
Accepted Payment Currency: USD, CNY;  
Accepted Payment Type: T/T;

# HOT CUSTOMIZED PRODUCTS

Goods that people like to customize



## Long Reach Excavator Boom

- Long Reach Boom /
- Three Sections Demolition Arm /
- Demolition Extension Arm /

[Customize now](#)



## Demolition Boom

- Long Demolition Boom /
- Super Long Demolish Distance /
- Safe Demolition /

[Customize now](#)



## Telescopic Boom

- Three-stage Extension /
- Super Long Control Distance /
- Flexible Expansion /

[Customize now](#)



## Bucket

- Replaceable Fork Tines /
- Heavy Durable Bucket /



## Wood Grabber

- Mechanical Hydraulic Shear /
- Excavator Rotating Grapple /



Jiangmen Kaiping Zhonghe Machinery Manufacturing Co., Ltd

+86 13822325403

aria@excavatorlongarm.com

excavatorlongarm.com

9 Huancui West Road, Cuishanhu New Area, Kaiping City, Guangdong Province, China