

## Excavator Attachments Excavator Ditch Cleaning Bucket Mini Excavator Mud Bucket 1500mm Width for 8-11T Excavator

Our Product Introduction

for more products please visit us on excavatorlongarm.com

### Basic Information

- Place of Origin: Guangdong, China
- Brand Name: Zhonghe
- Certification: CE
- Model Number: QJD001
- Minimum Order Quantity: 1 piece
- Price: \$600/pieces
- Packaging Details: Bubble bag packaging
- Delivery Time: 25-30 work day
- Payment Terms: T/T
- Supply Ability: 5 Piece/Pieces per Month



### Product Specification

- Part Name: Excavator Ditch Cleaning Bucket
- Material: Q355B, NM400, HARDOX500 Optional
- Width: Customization
- Capacity: 0.33cbm
- Suitable Excavator: 8-11Ton
- Warranty: 3 Months
- Condition: 100%new
- Quality: High-Quality
- MOQ: 1 PCS
- Packing: Standard Packing
- After-sales Service Provided: Online Video Support



### More Images



### Product Description

Our Product



## Ditch cleaning bucket /Mud bucket



**ZHONGHE MACHINERY**

"Merit Quality, Sincerity Management, and Customer Satisfaction".



Zhonghe buckets are made of high-strength steel (HARDOX500/NM400/NM500/Q355, etc.) and assembled with high-quality parts. We choose different materials for different working conditions. Our goal is to provide competitive prices, excellent quality and excellent service to end customers

### Applications:

Surface trimming of slopes, dredging of riverbeds and ditches, etc. where larger bucket capacity is required.

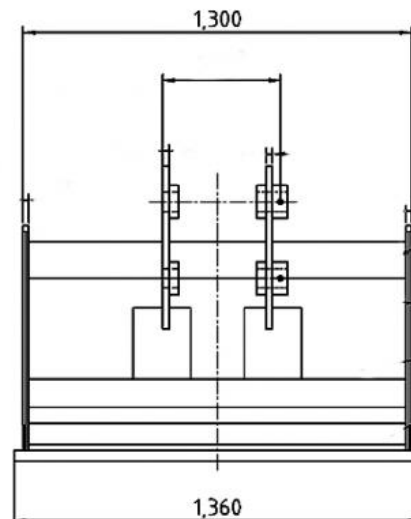
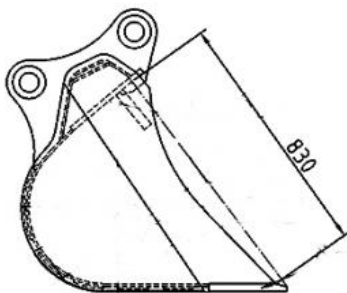
### Excavator Ditch Bucket (Mud Bucket) Key Features:

1. Narrow and Long Design: Ideal for digging trenches and ditches in tight spaces.
2. High-Side Walls: Prevent material spillage and reduce clogging.
3. Reinforced Cutting Edge: Durable for cutting through tough mud and wet soils.
4. Specialized Teeth: Improves digging efficiency in soft or sticky materials.
5. Heavy-Duty Construction: Made with high-strength steel for durability in harsh conditions.
6. Large Capacity: Can carry a good amount of material despite the narrow design.
7. Versatile Applications: Used for drainage, trenching, and utility installation tasks.

### Advantages of an Excavator Ditch Bucket (Mud Bucket):

1. Efficient Excavation in Tight Spaces: The narrow design allows for precise digging in confined areas like ditches, trenches, and utility lines.
2. Enhanced Durability: Built with reinforced materials and cutting edges to withstand tough, muddy, and abrasive conditions.
3. Reduced Material Spillage: High side walls help contain soil and mud, preventing loss of material during excavation.
4. Improved Digging Performance: Specialized teeth and blade design make it easier to cut through wet, sticky, or compacted soil.
5. Versatile Applications: Perfect for drainage, irrigation, grading, and utility installation, especially in waterlogged or muddy environments.

### 0.66M3 mud bucket---1300mm bucket width



型号 Model	项目 Item	销轴直径 (mm) Pin Diameter(mm)	挖斗宽 (mm) Bucket Width (mm)	容量 (升) Capacity (litres)	重量 Weight	材质 Material
1-2T	ZH-MINI	<35	900	0.1	94	Q355B+NM400
3-4T	ZH-24	40	1200	0.16	184	
5-7T	ZH-25	45	1200	0.2	220	
8-11T	ZH-26	50-55	1500	0.33	297	
12-18T	ZH-27A	60/65/70	1500	0.6	478	
			1800	0.75	522	
	ZH-27B	60/65/70	1500	0.72	676	
			1800	0.8	750	
19-24T	ZH-28A	80	1800	0.91	842	
			2000	1.09	910	
	ZH-28B	80	1800	1.17	1150	
			2000	1.35	1214	
25-30T	ZH-29	90	2000	1.46	1276	
30-38T	ZH-30	90/100/110	2000	1.64	1600	
			2200	1.9	1760	
40-50T	ZH-31	100/120	2200	2.4	2545	

Some pictures of excavator mud bucket



Working Conditions for Ditch Buckets (Mud Buckets):

- \* Wet and Muddy Conditions: Excellent for digging in wet, sticky, or muddy environments, where conventional buckets might struggle.
- \* Precision Excavation: Ideal for trenching, grading, or clearing narrow spaces, such as drainage ditches, utility installation sites, or irrigation channels.
- \* Shallow Excavations: Best suited for shallow excavation tasks in tight spaces or locations with limited access.

## »» PRODUCT CATEGORY ««



Long Reach Boom



Two-Section Telescopic Arm



Three-Section Telescopic Arm



Pile Driving Arm



Sliding Arm



Tunnel Arm



Demolition Boom



Rock Arm

## »» PRODUCT CATEGORY ««



Standard Bucket



Rock Bucket



Clamshell Bucket



Rock Ripper



Sliding Arm



Skeleton Bucket



Ditch Cleaning Bucket



Orange Peel Grapple



Root Rake



## >> APPLICABLE BRANDS <<

KOMATSU CAT HITACHI VOLVO SUMITOMO

KOBELCO DOOSAN CASE KATO HYUNDAI

JCB LIEBHERR ATLAS TEREX Kubota YANMAR TAKEUCHI IHISCE

SANY SDLG 山东临工 STRONG JCM SHANTUI 福田雷沃重工 LOVOL 厦工 XGMA LG 柳工

LISHIDE 力士德 ZOOMLION XCMG LONKING 龙工 SUNWARD 山河智能

## >> COMPANY PROFILE <<

### Kaiping Zhonghe Machinery Manufacturing Co., Ltd

Founded in 2018, Zhonghe heavy industry independently develops and produces construction machinery parts such as excavator lengthening arm, mountain pulling arm, two-stage telescopic arm, sliding arm, three-stage telescopic arm, three-stage demolition arm, rock arm, tunnel arm, bucket, pile driving arm, wood grabber, steel grabber and scarifier.



It is widely used in weathered stone crushing, subway construction, forestry logging, municipal pipeline engineering, river dredging, building demolition, Larsen steel sheet pile driving and pulling, pile foundation engineering, resource recovery and other engineering industries. The products are sold in more than 40 countries and regions. Provide one-year after-sales service with after-sales warranty and deliver on time. 24-hour online service can provide OEM production.



## Our Team

The power of knowledge, the power of the power of unity and dedication, we will gain.



## Zhonggehe Machinery

Our company is specialized in excavator long reach boom arm, standard arm, pile driving arm, two or three section demolition boom, tunnel arm, rock arm, quick hitch, tilting bucket, rock ripper, mechanical grapple, log grab, orange peel grapple, clamp bucket, rock bucket, clamshell bucket, multi crusher, single cylinder shear, rock breaker, pile hammer.

All products support customization, and customized products are suitable for all excavator brands.

## EXHIBITION





# » PRODUCTION ADVANATGES «

Our factory has a complete range of production equipment, which is conducive to the production of our products, good quality and ensures product accuracy.

1. Panel is cut by CNC plasma machine with less deformation.
2. Tolerance within 5-10um, ensure the accuracy of hole .
3. Environmentally friendly verified spraying room.
4. GMAW-Gas Metal Arc Welding.
5. Plasma cutting machines, boring machines, beveling machines, bending machines, etc. ensure accuracy.



Large double-sided floor boring machine



CNC plasma cutting machine



Automatic edge milling machine



Environmentally friendly spary booth



## High Precision Equipment



Draw Design



Plasma cutting machine



Machining



Plate rolling machine



double-sided boring lathe



Telescopic arm put on double-sided boring lathe



Long reach boom put on double-sided boring lathe



Ultrasonic flaw detection equipment



Beveling machine



Beveling machine



Paint spraying



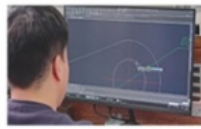
Shipment

# PRODUCTION PROCESS



Ingenious craftsmanship / Quality assurance

## Zhonghe Machinery Production Steps



Draw design



Manufacturing



Plate cutting



Machining



Mechanical beveling



Riveting, bending



Welding



Gas shielded welding



Pipeline layout



Spray paint



Test



Arrange shipment

# CERTIFICATIONS



## Shipping And Packaging

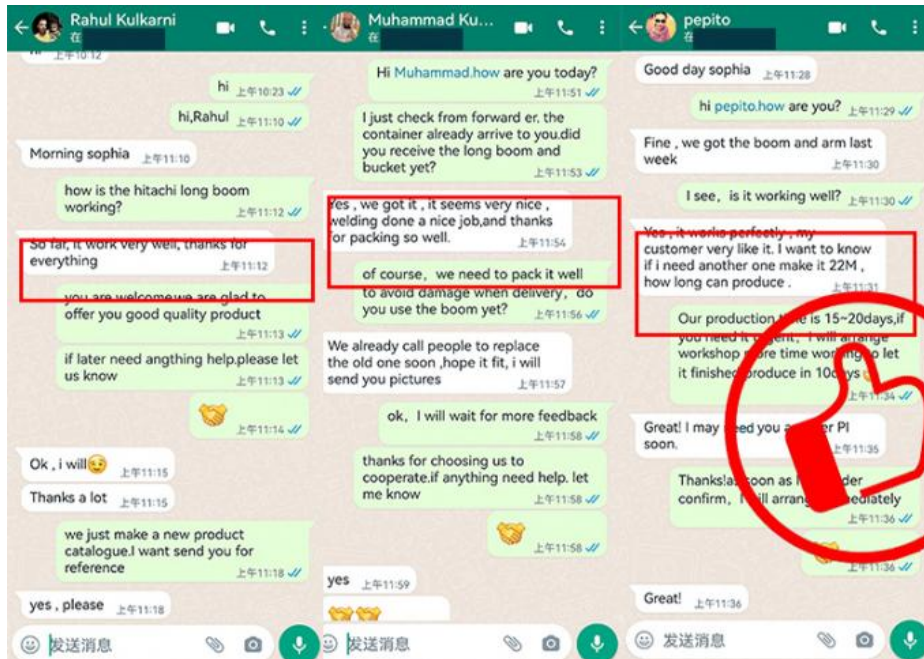
Our products have been sold to more than 60 countries, and our transportation methods include sea transportation, land transportation, and air transportation. Our packaging is wooden box packaging or stretch film packaging. The goods will be packed before shipment and then loaded into the container to ensure the safety of the goods.



# PACKAGE & SHIPPING



Package  
Bubble bag packing for most products;  
Wooden case for little products, like buckets;  
Iron frame support for boom arms.  
The accessories and package of excavator long boom arm are subjected to our final confirmation.





# FAQ



## 1. Who are we?

We are based in Guangdong, China, start from 2018, sell to Southeast Asia(40.00%), Mid East(10.00%), North America(10.00%), South Asia(8.00%), Eastern Europe(8.00%), Oceania(8.00%), Eastern Asia(5.00%), Africa(5.00%), South America(4.00%), Northern Europe(2.00%). There are total about 51-100 people in our office.

## 2. How can we guarantee quality?

Always a pre-production sample before mass production;  
Always final inspection before shipment;

## 3. What can you buy from us?

Excavator Long Reach Boom, Excavator Telescopic Arm, Excavator Demolition Arm, Excavator Grapple, Excavator Bucket

## 4. Why should you buy from us not from other suppliers?

With more than 60 employees, it has its own unique research and development team in more than 10000 square meters of steel structure standardized plant. The annual production of various of arms is up to 600 sets, and various of buckets are 6000 pieces.

## 5. What services can we provide?

Accepted Delivery Terms: FOB, CIF, EXW, CIP;  
Accepted Payment Currency: USD, CNY;  
Accepted Payment Type: T/T;



Jiangmen Kaiping Zhonghe Machinery Manufacturing Co., Ltd



+86 13822325403



aria@excavatorlongarm.com



excavatorlongarm.com

9 Huancui West Road, Guishanhu New Area, Kaiping City, Guangdong Province, China