



High-Performance 20-24T Excavator Tunnel Arm Shortened Arm for Excavation Basement Tunnel

Our Product Introduction

for more products please visit us on excavatorlongarm.com

Basic Information

- Place of Origin: Guangdong, China
- Brand Name: Zhonghe
- Certification: CE
- Model Number: SDB001
- Minimum Order Quantity: 1 piece
- Price: \$7000/pieces
- Packaging Details: Bubble bag packaging
- Delivery Time: 25-30 work day
- Payment Terms: T/T
- Supply Ability: 5 Piece/Pieces per Month

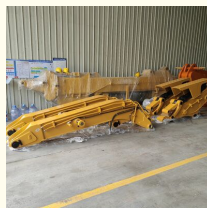
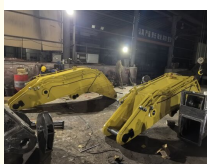


Product Specification

- Part Name: Excavator Tunnel Arm
- Material: Q355B
- Applicable Industries: Energy & Mining & Demolition
- Suitable Excavator: 20-24Ton
- Weight: 2350kg
- Warranty: 6 Months
- Condition: 100%new
- Quality: High-Quality
- MOQ: 1 PCS
- Packing: Standard Packing
- After-sales Service Provided: Online Video Support



More Images



Product Description

Our Product Introduction

Excavator Tunnel Arm



Tunnel Arm Customization

- *Applicable for all brand excavator.
- *Color, length, material can do according to you.
- *Made of Q355B or Q690D steel with good strength and rigidity.



PRODUCT DESCRIPTION

Tunnel Arm

What is an excavator tunnel arm?

The tunnel arm generally refers to a working device that works in a narrow place. It is mostly used in tunnels, so it is called a tunnel arm.

In Hong Kong, it is called a gungeon arm or a fireplace arm. In Taiwan, it is called naughty leopard. There are various names, but in China popularly known as tunnel arms.

Suitable for tunnels or other narrow working conditions. The tunnel arm can carry a breaker that one model larger than the standard arm, increasing work efficiency. The forearm is filled with iron sand to increase its weight, which can suppress the breaker hammer more forcefully and reduce rebound. The bucket arm cylinder is placed underneath to reduce cylinder damage and failure.

Configuration:

A set of tunnel arm, a middle arm cylinder, a bucket cylinder, 6 pins, 6 high-pressure hoses, a set of breaker pipelines, 2 stop valves, and linkage.



Key Features of a Tunnel Arm/Short Arm:

- * **Shorter Length:** Designed specifically to work in confined spaces, providing greater control and reducing the risk of accidental damage.
- * **Increased Durability:** Often reinforced to handle the stress of working in challenging environments.
- * **Enhanced Precision:** Allows for more precise digging and material handling, crucial in environments where space is limited.
- * **Compatibility:** Can usually be attached to various types of excavators, depending on the model and manufacturer.

PRODUCT DESCRIPTION



Advantages of Tunnel Arm

Long-lasting and durable



Regarding plate thickness, our tunnel booms are designed for excavators with a capacity of 30 tons or more, and we use plates with a thickness of 20-30mm. The design lifespan even exceeds that of the original factory boom.



Improve efficiency

The forearm of the tunnel boom is filled with material to reduce the rebound of the breaker and improve the striking efficiency.



Ease of use and innovative design

The middle boom cylinder of the tunnel boom is placed at the bottom, which makes operation unobstructed and more convenient. At the same time, we have designed a protective cover on the bucket cylinder to prevent falling debris from damaging the cylinder.

PRODUCT DESCRIPTION



Advantages of Tunnel Arm



The three-layer welding ensures the quality of the weld and improves product quality, while alloy steel sleeves are used in all parts.

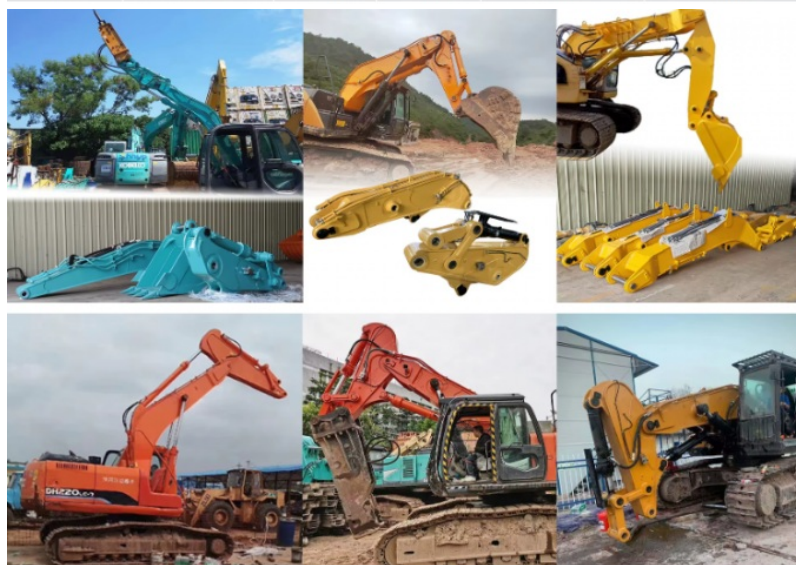


All pipelines use 1.2-inch thick-walled seamless pipes to reduce the pipe burst rate. For the gate valves, we use original gate valves, which have a longer service life. For the welding joints, we use better Ningbo connectors.



The bucket cylinder is thickened. The most common problem with tunnel booms is the piston cylinder bending of the bucket cylinder. We use 30-ton bucket cylinders for 20-ton booms, 45-ton cylinders for 30-ton booms, and 65-ton bucket cylinders for 45-ton booms to reduce the failure rate.

挖机 Excavator (ton)	总长 Total Length (mm)	大臂 Boom (mm)	小臂 Arm (mm)	最大挖掘高度 Max Height (mm)	最大挖掘深度 Max Depth (mm)(D)
20-25T	13000	3200	1900	4500	8500
30-36T	15400	4200	1900	5000	10500
40-45T	18000	4500	1900	5000	11000



Excavator Tunnel Arms Suitable For Application



Highway construction tunnel



Underground Engineering



Mountain excavation



Working under bridges



Mine tunnel



Railway construction

COMPANY PROFILE



Kaiping Zhonghe Machinery Manufacturing Co., Ltd.

Founded in 2018, Zhonghe heavy industry independently develops and produces construction machinery parts such as excavator lengthening arm, mountain pulling arm, two-stage telescopic arm, sliding arm, three-stage telescopic arm, three-stage demolition arm, rock arm, tunnel arm, bucket, pile driving arm, wood grabber, steel grabber and scarifier. It is widely used in weathered stone crushing, subway construction, forestry logging, municipal pipeline engineering, river dredging, building demolition, Larsen steel sheet pile driving and pulling, pile foundation engineering, resource recovery and other engineering industries. The products are sold in more than 40 countries and regions. Provide one-year after-sales service with after-sales warranty and deliver on time. 24-hour online service can provide OEM production.

Our Team

The power of knowledge, the power of the power of unity and dedication, we will get it.



Zhonghehe Machinery

Our company is specialized in excavator long reach boom arm, standard arm, pile driving arm, two or three section demolition boom, tunnel arm, rock arm, quick hitch, tilting bucket, rock ripper, mechanical grapple, log grab, orange peel grapple, clamp bucket, rock bucket, clamshell bucket, multi crusher, single cylinder shear, rock breaker, pile hammer.

All products support customization, and customized products are suitable for all excavator brands.



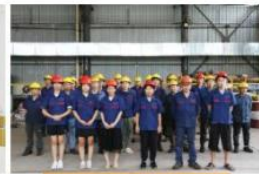
14000m² Workshop

We have more than 14000m² steel structure workshop with lots of high precision processing equipments.



R&D Team

We use precision drawing software to achieve the max working range under the premise of safe operation.



Skillful Workers

There are more than 60 skillful staffs, 30 welding workers with over 5 years welding experience.



Customized

1. Fit all brand.
2. Color, length, material are customized.
3. Extra pipeline can be added.



Prompt Lead Time

1. Our lead time is 7-15 days.
2. Our annual output of excavator boom arms can reach 600 sets.



100% Service

1. Online support within 24 hours.
2. Appointment video technical support.

EXHIBITIONS



PRODUCT CATEGORY



Long Reach Boom



Sliding Arm



Two-section Telescopic Arm



Three-section Telescopic Arm



Pile Driving Arm



Tunnel Arm

PRODUCT CATEGORY



Rock Bucket



Standard Bucket



Tilt Bucket



Ditch Cleaning Bucket



Skeleton Bucket



Rock Ripper

APPLICABLE BRANDS



KOMATSU



HITACHI

VOLVO

SUMITOMO

KOBELCO



CASE

KATO

HYUNDAI



LIEBHERR

ATLAS



TEREX

Kubota



TAKEUCHI

IHISCE



SANY



山东临工



山重建机



JCM



SHANTUI



福田雷沃重工



厦工



LuGong

LISHIDE



ZOOMLION



XCMG

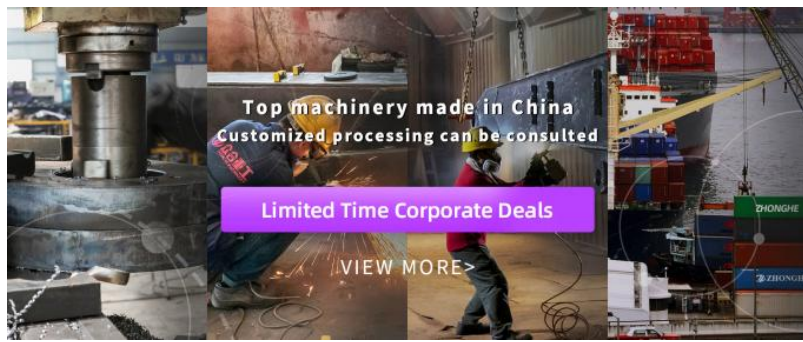
Lonking 龙工

SUNWARD

山湾智能

CERTIFICATIONS





PRODUCTION ADVANTAGES

Our factory has a complete range of production equipment, which is conducive to the production of our products, good quality and ensures product accuracy.

1. Panel is cut by CNC plasma machine with less deformation.
2. Tolerance within 5-10um, ensure the accuracy of hole.
3. Environmentally friendly verified spaying room.
4. GMAW-Gas Metal Arc-Welding.
5. Plasma cutting machines, boring machines, beveling machines, bending machines, etc. ensure accuracy.



Large double-sided floor boring machine



CNC plasma cutting machine



Automatic edge milling machine



Environmentally friendly spaying booth

PRODUCTION PROCESS



Ingenious craftsmanship / Quality assurance

Zhonghe Machinery Production Steps



Draw design



Manufacturing



Plate cutting



Machining



Mechanical beveling



Riveting, bending



Welding



Gas shielded welding



Pipeline layout



Spray paint



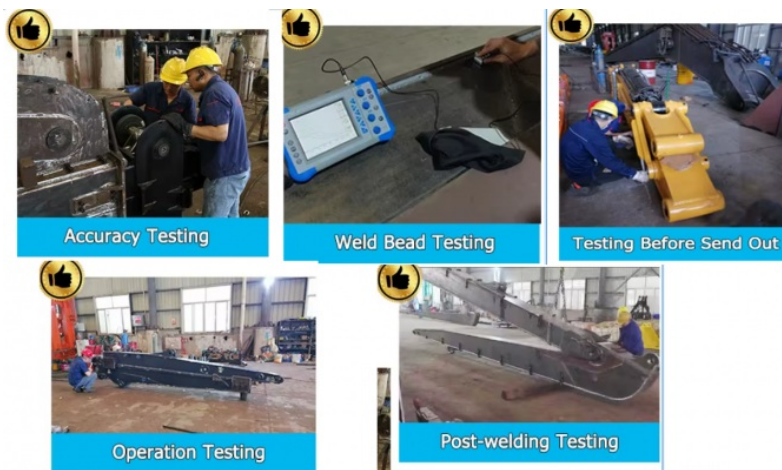
Test



Arrange shipment

Quality Control

Post-welding Testing
Accuracy Testing
Weld bead testing
Testing before send out goods
Operation Testing



What We Have

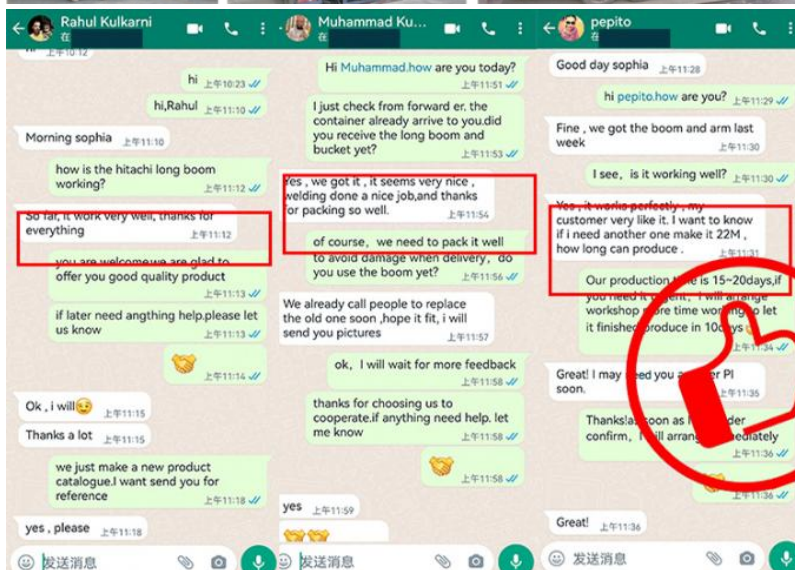
1. Compatible with all makes and models of excavators.
2. All welding seams are tapered 45 degrees before welding in order to make the welding position more durable for long-term use.
3. Supply customization service according to customer requirements.
4. Additional applicable accessories can be added.
5. The gas welding is used for finishing, which makes the welding position more elegant and stable.

What You Get

1. Superior quality and durable three-section demolition boom and arm.
2. Provide lifetime free and timely consultation about any products.
3. Provide working condition design sample drawing free of charge.
4. Heavy Duty boom and arm hit harder and last longer, without breaking your wallet.

SHIPPING & PACKAGE

Package
Bubble bag packing for most products;
Wooden case for little products, like buckets;
Iron frame support for boom arms.
The accessories and package of excavator long boom arm are subjected to our final confirmation.



FAQ



1. Who are we?

We are based in Guangdong, China, start from 2018, sell to Southeast Asia(40.00%), Mid East(10.00%), North America(10.00%), South Asia(8.00%), Eastern Europe(8.00%), Oceania(8.00%), Eastern Asia(5.00%), Africa(5.00%), South America(4.00%), Northern Europe(2.00%). There are total about 51-100 people in our office.

2. How can we guarantee quality?

Always a pre-production sample before mass production;
Always final Inspection before shipment;

3. What can you buy from us?

Excavator Long Reach Boom, Excavator Telescopic Arm, Excavator Demolition Arm, Excavator Grapple, Excavator Bucket

4. Why should you buy from us not from other suppliers?

With more than 60 employees, it has its own unique research and development team in more than 10000 square meters of steel structure standardized plant. The annual production of various arms is up to 600 sets, and various buckets are 6000 pieces.

5. What services can we provide?

Accepted Delivery Terms: FOB, CIF, EXW, CIP;
Accepted Payment Currency: USD, CNY;
Accepted Payment Type: T/T;



Jiangmen Kaiping Zhonghe Machinery Manufacturing Co., Ltd



+86 13822325403



aria@excavatorlongarm.com



excavatorlongarm.com

9 Huancui West Road, Cuishanhu New Area, Kaiping City, Guangdong Province, China