



## High Efficiency 20-27 Ton Excavator 10-12m Sliding Boom Arm Telescopic Arm for Construction

Our Product Introduction

for more products please visit us on excavatorlongarm.com

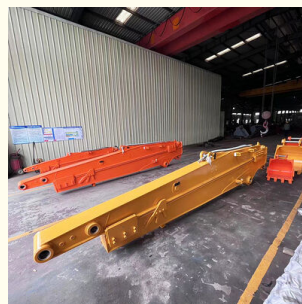
### Basic Information

- Place of Origin: Guangdong, China
- Brand Name: Zhonghe
- Certification: CE
- Model Number: HB001
- Minimum Order Quantity: 1 piece
- Price: \$10800/pieces
- Packaging Details: Bubble bag packaging
- Delivery Time: 25-30 work day
- Payment Terms: T/T
- Supply Ability: 5 Piece/Pieces per Month

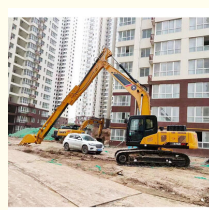


### Product Specification

- Brand Name: Zhonghe
- Part Name: Excavator Sliding Arm
- Material: Q355B
- Applicable Industries: Energy & Mining & Demolition
- Suitable Excavator: 20-27Ton
- Length (m): 10m-12m
- Color: As Customer Requires
- Warranty: 6 Months
- Condition: 100%new
- Quality: High-Quality
- MOQ: 1 PCS
- Packing: Standard Packing
- After-sales Service Provided: Online Video Support



### More Images



### Product Description

Our Product Introduction

# Excavator Sliding Arm



## Sliding Arm Customization

- \*Applicable for all brand excavator.
- \*Color, length, material can do according to you.
- \*Made of Q355B or Q690D steel with good strength and rigidity.



## PRODUCT DESCRIPTION

### Sliding Arm



#### What is an excavator sliding arm?

The excavator boom is composed of an upper sliding arm and a lower fixed arm. The upper sliding body is freely extend and retracted by the telescopic cylinder, which is suitable for the excavation of subways and pits. The pioneering double-limit design reduces the running vibration of the boom and improves the service life of the cylinder. The sliding device has been changed from the previous pulley to the sliding block, which reduces the failure rate and the wear-resistant rubber sliding block is most easily replaced and maintained.



#### Configuration:

A set of sliding arms, a bucket, 2 pins, 2 high-pressure hoses and 1 two-way switch.

Excavator model(ton)	Digging depth(m)	Weight(kgs)	Bucket capacity(cbm)
3-4T	4	200	0.1
6-8T	6	800	0.2
10-12T	8	1300	0.35
20-27T	10	2200	0.5-0.6
20-27T	12	2600	0.45

## PRODUCT DESCRIPTION

### Advantages of Excavator Sliding Arm



Cover plates are cut from a whole piece but not spliced, to be more firm and not easy to deform.

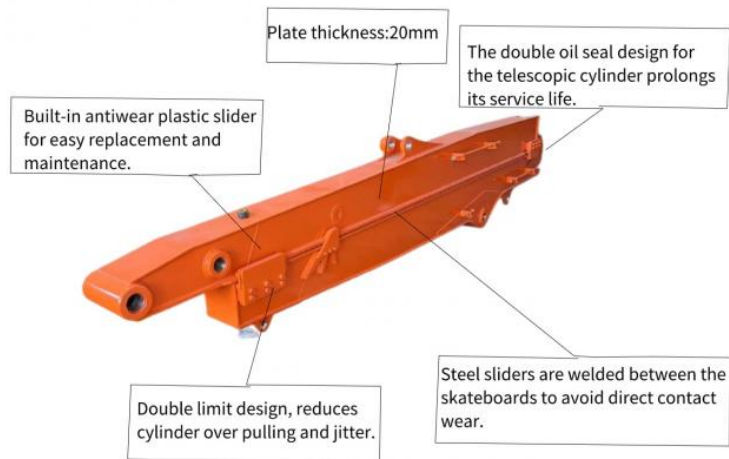


The double limit design of sliding cylinder prevents cylinder jolting and over-pulling.



The tube has leakage holes to reduce water accumulation inside the arm tube, thereby reducing internal corrosion.

## PRODUCT DESCRIPTION



Some excellent design of Our Telescopic Arm for Excavator which excel other peers:



its easy for the pipeline jumps up, causing damage to the pipeline.

**VS**



Welded on, less vibration and longer service life.



Double limit design  
reduces cylinder over pulling and jitter

**VS**

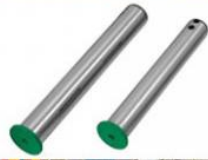


Huge vibration  
cylinder easy to fail





The pin is too small, has a short service life, and does not have enough bearing capacity.



**VS**



The pin uses the original pin size and is more sturdy.



**VS**



Cut from one plate



stronger

avoid deformation

Welded together



easy to crack



## COMPANY PROFILE



### Kaiping Zhonghe Machinery Manufacturing Co., Ltd.

Founded in 2018, Zhonghe heavy industry independently develops and produces construction machinery parts such as excavator lengthening arm, mountain pulling arm, two-stage telescopic arm, sliding arm, three-stage telescopic arm, three-stage demolition arm, rock arm, tunnel arm, bucket, pile driving arm, wood grabber, steel grabber and scarifier. It is widely used in weathered stone crushing, subway construction, forestry logging, municipal pipeline engineering, river dredging, building demolition, Larsen steel sheet pile driving and pulling, pile foundation engineering, resource recovery and other engineering industries. The products are sold in more than 40 countries and regions. Provide one-year after-sales service with after-sales warranty and deliver on time. 24-hour online service can provide OEM production.







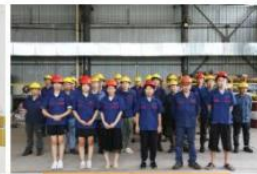
### 14000m<sup>2</sup> Workshop

We have more than 14000m<sup>2</sup> steel structure workshop with lots of high precision processing equipments.



### R&D Team

We use precision drawing software to achieve the max working range under the premise of safe operation.



### Skillful Workers

There are more than 60 skillful staffs, 30 welding workers with over 5 years welding experience.



### Customized

1. Fit all brand.
2. Color, length, material are customized.
3. Extra pipeline can be added.



### Prompt Lead Time

1. Our lead time is 7-15 days.
2. Our annual output of excavator boom arms can reach 600 sets.



### 100% Service

1. Online support within 24 hours.
2. Appointment video technical support.

## EXHIBITIONS



## COMPANY PROFILE



### Kaiping Zhonghe Machinery Manufacturing Co., Ltd.

Founded in 2018, Zhonghe heavy industry independently develops and produces construction machinery parts such as excavator lengthening arm, mountain pulling arm, two-stage telescopic arm, sliding arm, three-stage telescopic arm, three-stage demolition arm, rock arm, tunnel arm, bucket, pile driving arm, wood grabber, steel grabber and scarifier. It is widely used in weathered stone crushing, subway construction, forestry logging, municipal pipeline engineering, river dredging, building demolition, Larsen steel sheet pile driving and pulling, pile foundation engineering, resource recovery and other engineering industries. The products are sold in more than 40 countries and regions. Provide one-year after-sales service with after-sales warranty and deliver on time. 24-hour online service can provide OEM production.



## Our Team

The power of knowledge, the power of the power of unity and dedication, we will gain.



## Zhongehe Machinery

Our company is specialized in excavator long reach boom arm, standard arm, pile driving arm, two or three section demolition boom, tunnel arm, rock arm, quick hitch, tilting bucket, rock ripper, mechanical grapple, log grab, orange peel grapple, clamp bucket, rock bucket, clamshell bucket, multi crusher, single cylinder shear, rock breaker, pile hammer.

All products support customization, and customized products are suitable for all excavator brands.



### 14000m<sup>2</sup> Workshop

We have more than 14000m<sup>2</sup> steel structure workshop with lots of high precision processing equipments.



### R&D Team

We use precision drawing software to achieve the max working range under the premise of safe operation.



### Skillful Workers

There are more than 60 skillful staffs, 30 welding workers with over 5 years welding experience.



### Customized

1. Fit all brand.
2. Color, length, material are customized.
3. Extra pipeline can be added.



### Prompt Lead Time

1. Our lead time is 7-15 days.
2. Our annual output of excavator boom arms can reach 600 sets.



### 100% Service

1. Online support within 24 hours.
2. Appointment video technical support.

## PRODUCT CATEGORY



Long Reach Boom



Sliding Arm



Two-section Telescopic Arm



Three-section Telescopic Arm



Pile Driving Arm



Tunnel Arm



## PRODUCT CATEGORY



Rock Bucket



Standard Bucket



Tilt Bucket



Ditch Cleaning Bucket



Skeleton Bucket



Rock Ripper

## APPLICABLE BRANDS



**KOMATSU**



**HITACHI**

**VOLVO**

**SUMITOMO**

**KOBELCO**



**CASE**

**KATO**

**HYUNDAI**



**LIEBHERR**

**ATLAS**



**TEREX**

**Kubota**



**TAKEUCHI**

**IHISCE**



**SANY**



**山东临工**



**山重建机**



**JCM**



**SHANTUI**



**福田雷沃重工**



**厦工 XGMA**



**LuGong 鲁工**

**LISHIDE**  
力士德

**ZOOMLION**

**XCMG**

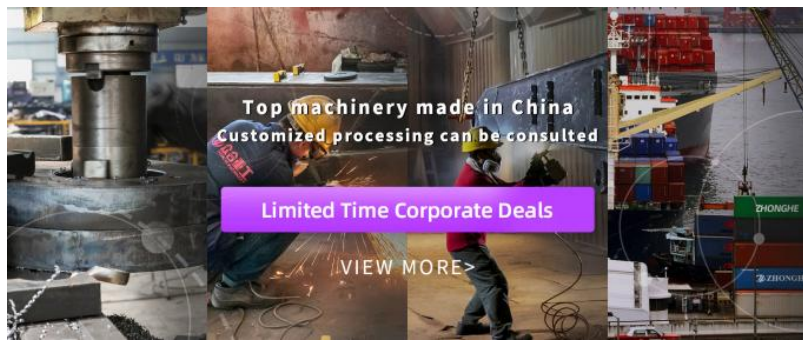
**Lonking 龙工**

**SUNWARD**  
山湾智能

## CERTIFICATIONS







Top machinery made in China  
Customized processing can be consulted

Limited Time Corporate Deals

VIEW MORE>

## PRODUCTION ADVANTAGES

Our factory has a complete range of production equipment, which is conducive to the production of our products, good quality and ensures product accuracy.

1. Panel is cut by CNC plasma machine with less deformation.
2. Tolerance within 5-10um, ensure the accuracy of hole.
3. Environmentally friendly verified spaying room.
4. GMAW-Gas Metal Arc-Welding.
5. Plasma cutting machines, boring machines, beveling machines, bending machines, etc. ensure accuracy.



Large double-sided floor boring machine



CNC plasma cutting machine



Automatic edge milling machine



Environmentally friendly spary booth

## PRODUCTION PROCESS



Ingenious craftsmanship / Quality assurance

### Zhonghe Machinery Production Steps



Draw design



Manufacturing



Plate cutting



Machining



Mechanical  
beveling



Riveting, bending



Welding



Gas shielded  
welding



Pipeline layout



Spray paint



Test



Arrange shipment

### Quality Control

#### Post-welding Testing

#### Accuracy Testing

#### Weld bead testing

#### Testing before send out goods

#### Operation Testing

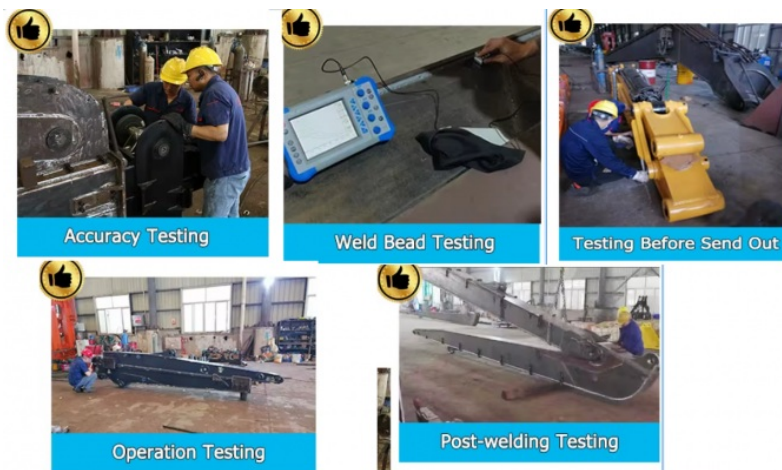
The first system is the technical design drawing review mechanism

The second system is the semi-finished product review mechanism, (each process has a detection testing for the previous process)

The third system is the finished product testing.

(Before painting, the overall inspection is carried out to check whether the design size matches the welding size, and whether the installation size meets the design requirement.)

To sum up, every single ZHONGHE product has been passed the above three-stage inspection system to ensure that is qualified before shipping.



### What We Have

1. Compatible with all makes and models of excavators.
2. All welding seams are tapered 45 degrees before welding in order to make the welding position more durable for long-term use.
3. Supply customization service according to customer requirements.
4. Additional applicable accessories can be added.
5. The gas welding is used for finishing, which makes the welding position more elegant and stable.

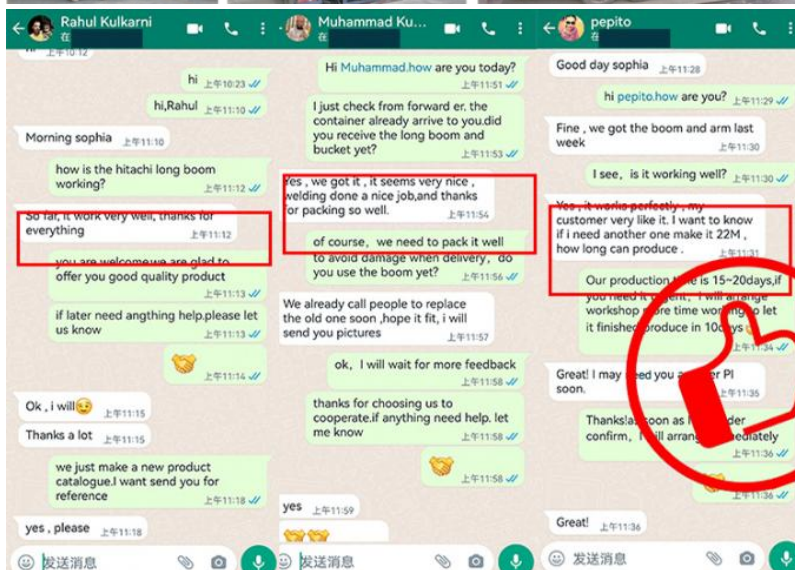
### What You Get

1. Superior quality and durable three-section demolition boom and arm.
2. Provide lifetime free and timely consultation about any products.
3. Provide working condition design sample drawing free of charge.
4. Heavy Duty boom and arm hit harder and last longer, without breaking your wallet.

## SHIPPING & PACKAGE

### Package

Bubble bag packing for most products;  
Wooden case for little products, like buckets;  
Iron frame support for boom arms.  
The accessories and package of excavator long boom arm are subjected to our final confirmation.





## FAQ



### 1. Who are we?

We are based in Guangdong, China, start from 2018, sell to Southeast Asia(40.00%), Mid East(10.00%), North America(10.00%), South Asia(8.00%), Eastern Europe(8.00%), Oceania(8.00%), Eastern Asia(5.00%), Africa(5.00%), South America(4.00%), Northern Europe(2.00%). There are total about 51-100 people in our office.

### 2. How can we guarantee quality?

Always a pre-production sample before mass production;  
Always final Inspection before shipment;

### 3. What can you buy from us?

Excavator Long Reach Boom, Excavator Telescopic Arm, Excavator Demolition Arm, Excavator Grapple, Excavator Bucket

### 4. Why should you buy from us not from other suppliers?

With more than 60 employees, it has its own unique research and development team in more than 10000 square meters of steel structure standardized plant. The annual production of various arms is up to 600 sets, and various buckets are 6000 pieces.

### 5. What services can we provide?

Accepted Delivery Terms: FOB, CIF, EXW, CIP;  
Accepted Payment Currency: USD, CNY;  
Accepted Payment Type: T/T;



**Jiangmen Kaiping Zhonghe Machinery Manufacturing Co., Ltd**



+86 13822325403



aria@excavatorlongarm.com



excavatorlongarm.com

9 Huancui West Road, Cuishanhu New Area, Kaiping City, Guangdong Province, China