



Excavator Tunnel Arm – Durable & Precision-Engineered for Underground Construction

Our Product Introduction

for more products please visit us on excavatorlongarm.com

Basic Information

- Place of Origin: Guangdong Province, China
- Brand Name: Kaiping Zhonghe Machinery Manufacturing Co. Ltd
- Certification: CE, Patents, ISO9001
- Model Number: Excavator Tunnel Arm 007
- Minimum Order Quantity: 1 set / piece
- Price: USD 1000.00-USD9000.00
- Packaging Details: bubble / wooden cases / others as you request
- Delivery Time: 5-20/working days
- Payment Terms: T/T, L/C
- Supply Ability: 5 sets per week

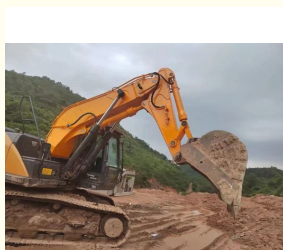


Product Specification

- Features: Heavy Duty Longer Service Life-span
- Suitable Excavators: 6ton - 60ton
- Working Condition: Digging Tunnel, Hard Rock
- Connectors: High Quality Connectors
- OEM/ODM: YES
- Material: Q355B Q690D Or Others As You Request
- Warranty: 6 Months For Arm And Boom, 3 Months For Bucket
- Tests: YES
- After-sales Service: YES
- High Efficiency: YES
- Highlight: **Excavator tunnel arm for underground construction, Durable excavator tunnel arm, Precision-engineered excavator tunnel arm**



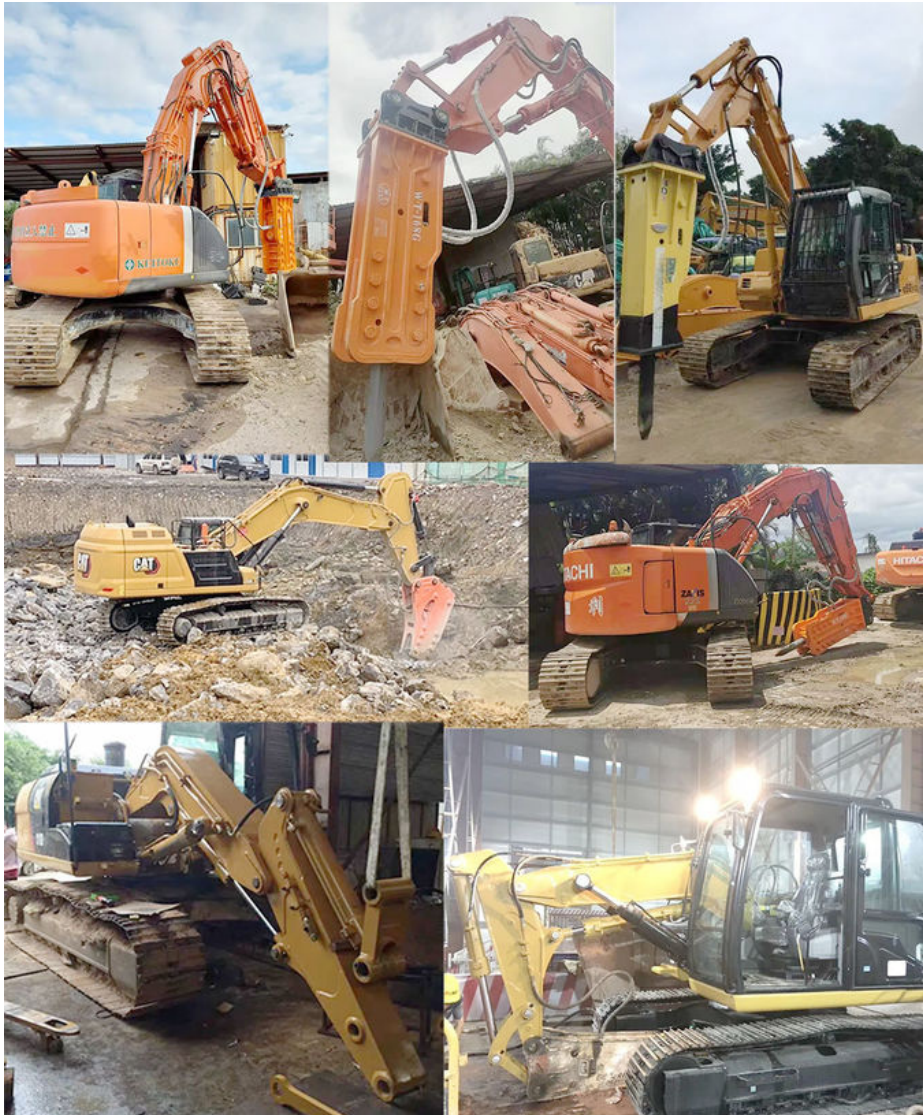
More Images



Product Description

Introduction of Excavator Tunnel Arm Tunnel Boom

Excavator tunnel arm tunnel boom also name excavator shorten arm shorten boom which is very suitable for digging tunnels and work in narrow places.



Key Features of One Set of Tunnel Arm Tunnel Boom for Excavator

- Reinforced High-Strength Steel – Built for extreme durability in tough tunneling conditions.
- Optimized Design for Confined Spaces – Compact yet powerful, ideal for metro, mining & utility projects.
- Enhanced Digging Force & Stability – Superior hydraulic efficiency for maximum productivity.
- Extended Lifespan – Robust joints & wear-resistant components reduce downtime.
- Compatible with Major Excavator Brands – Easy installation on leading machine models.





FAQ (Frequently Asked Questions):

Q: What makes your tunnel arm different from standard excavator arms?

A: Our tunnel arm is specifically engineered for underground work, with reinforced steel, optimized geometry, and superior hydraulic performance to handle confined spaces and heavy loads.

Q: Which excavator models is this arm compatible with?

A: It fits most major brands (e.g., CAT, Komatsu, Hitachi, Kobelco etc) – contact us for custom mounting solutions.

Q: How does it improve efficiency in tunneling projects?

A: The design maximizes digging force while minimizing swing radius, ensuring faster, safer excavation in tight spaces.

Q: What's the expected lifespan?

A: With proper maintenance, our tunnel arm lasts 2-3X longer than standard arms due to premium materials and reinforced stress points.

Search "Heavy-Duty Excavator Tunnel Arm" for industry-leading performance! Contact us today for specs & customization.



KAIPING ZHONGHE MACHINERY MANUFACTURING CO. LTD



Aria

Whatsapp: +86 13822325403

Email: aria@excavatorlongarm.com

Web: www.excavatorlongarm.com



Jiangmen Kaiping Zhonghe Machinery Manufacturing Co., Ltd

+86 13822325403

aria@excavatorlongarm.com

excavatorlongarm.com

9 Huancui West Road, Cuishanhu New Area, Kaiping City, Guangdong Province, China