



## Digger Boom Arm - High-Efficiency Telescopic Design

Our Product Introduction

for more products please visit us on [excavatorlongarm.com](http://excavatorlongarm.com)

### Basic Information

- Place of Origin: Guangdong Province, China
- Brand Name: Kaiping Zhonghe Machinery
- Certification: Patents, ISO, CE
- Model Number: Telescopic Arm for Excavator 008
- Minimum Order Quantity: 1 set / piece
- Price: USD 199.00-USD18999.00
- Packaging Details: bubble / wooden cases
- Delivery Time: 5-25/works
- Payment Terms: T/T, L/C
- Supply Ability: 5 sets per week



### Product Specification

- Suitable Excavator(ton): 6 Ton - 66 Ton
- Color: According To Clients' Requirement
- Material: LG700 / Q690D
- Cylinder: Premium Cylinders
- Full Test: Yes
- MOQ: 1 Piece / Set
- High Efficiency: YES
- Digging Depth(m): 12m 14m 16m 18m 20m
- Brand: Zhonghe Machinery
- Customized: YES
- OEM / ODM: Yes
- Bucket Capacity: 0.5cbm 1cbm 1.2cbm 1.8cbm
- Suitable For: Digging Deep Pits, Caissons, House Foundation Pits, Etc
- Highlight: **excavator telescopic boom arm,**



### More Images

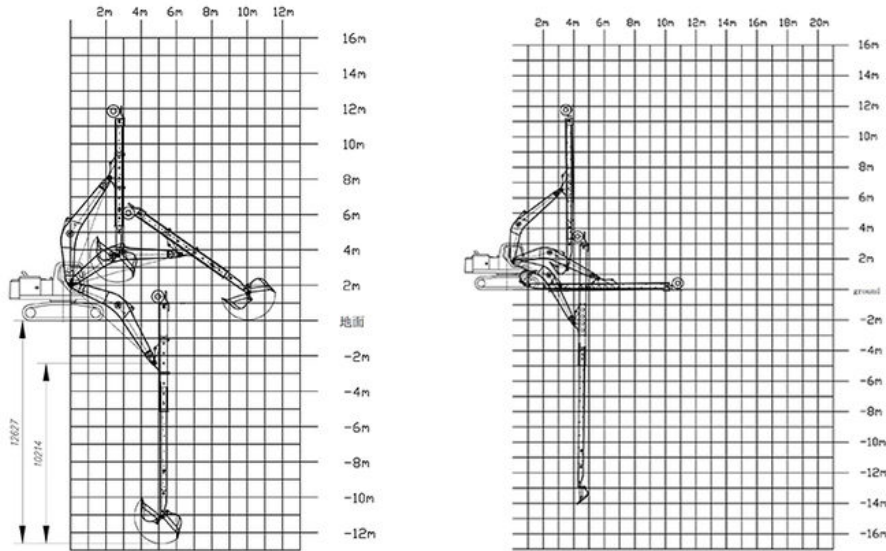


## Product Description

### Two-Section Telescopic Arm for Excavators – Heavy-Duty Extension Boom

#### Introduction of One Set of Zhonghe Machinery's Grapple Telescopic Arm

Our two-section hydraulic telescopic arm combines extended reach with superior gripping power, making it ideal for demanding applications where precision and strength are critical.



#### Key Features of One Set of Two Section Telescopic Excavator Arm

- Dual-Stage Telescopic Design – Smooth hydraulic extension for extended reach in digging, material handling.
- Reinforced Steel Construction – High-strength steel LG700 with welded reinforcement for durability under heavy loads.
- Precision Hydraulic Control – Integrated with excavator's hydraulic system for stable and responsive operation.
- Corrosion Protection – Shot-blasted & painted for long-term resistance to rust and wear.
- Universal Mounting – Adaptable to most 20–50T excavators (custom bucket available).



**Telescopic Arm**



**The front end is designed to be curved, greater digging force**

**Bearing part with multi-layer reinforced**







The pivot end is reinforced with multiple layers to withstand greater excavation forces

The exposed bucket cylinder can be replaced without disassembling arm, which is convenient for maintenance



The reel adopts enlarged spring piece





Contact Us!



Aria

KAIPING ZHONGHE MACHINERY MANUFACTURING CO. LTD

Whatsapp: +86 13822325403

Email: [aria@excavatorlongarm.com](mailto:aria@excavatorlongarm.com)

Web: [www.excavatorlongarm.com](http://www.excavatorlongarm.com)



Jiangmen Kaiping Zhonghe Machinery Manufacturing Co., Ltd

+86 13822325403

[aria@excavatorlongarm.com](mailto:aria@excavatorlongarm.com)

[excavatorlongarm.com](http://excavatorlongarm.com)

9 Huancui West Road, Cuishanhu New Area, Kaiping City, Guangdong Province, China