



Heavy Duty Hydraulic Excavator Tunnel Arm Shorten Boom and Arm 40-45Ton Load Capacity for Mining & Construction

Our Product Introduction

for more products please visit us on excavatorlongarm.com

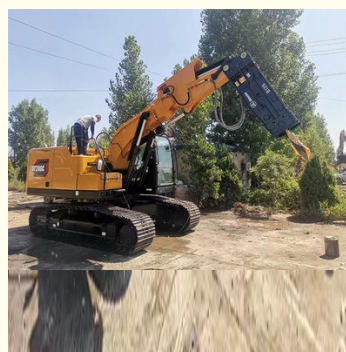
Basic Information

- Place of Origin: Guangdong, China
- Brand Name: Zhonghe
- Certification: CE
- Model Number: SDB001
- Minimum Order Quantity: 1 set
- Price: \$18000/pieces
- Packaging Details: Bubble bag packaging
- Delivery Time: 20-30 work day
- Payment Terms: T/T
- Supply Ability: 10 Piece/Pieces per Month



Product Specification

- Brand Name: Zhonghe Machinery
- Product Name: Excavator Tunnel Arm
- Application: Mining & Construction
- Moving Type: Crawler Excavator
- Material: Q355B/Q690
- Color: Customer's Request
- Warranty: 1 Year
- MOQ: 1 PCS
- Condition: 100%new
- Packing: Bubble Bag Packaging
- After-sales Service Provided: Video Technical Support



More Images



Product Description

Heavy Duty Hydraulic Excavator Tunnel Arm Shorten Boom and Arm 40-45Ton Load Capacity for Mining & Construction

Product Description

Highlights of Excavator Tunnel Arm

- *Tunnel arm, also known as **shorted arm**, is suitable for **tunneling** or other confined work conditions.
- *Tunnel arm can carry **a larger model of breaker** than the standard arm, increasing work efficiency.
- *The front arm is **filled with iron sand**, which can hold the breaker more firmly and reduce rebound. The bucket

Our Product

cylinder is placed below to **reduce damage**. *Tunnel arm, also known as **shorted arm**, is suitable for **tunneling** or other confined work conditions.

*Tunnel arm can carry **a larger model of breaker** than the standard arm, increasing work efficiency.

*The front arm is **filled with iron sand**, which can hold the breaker more firmly and reduce rebound. The bucket cylinder is placed below to **reduce damage**.

Tunnel boom

- Meets the needs for powerful machines on rock breaker projects in confined tunnels
- A true customised reliable performer, with robust cylinder guard, capable of break rock more effective, and with significantly smaller footprint.



High effectiveness

1. On the same machine, tunnel arm can obtain greater lifting capacity than standard arm.
2. Opening angle between boom and arm can reach 180 degrees

Robust structure

1. The upper and lower cover plates are thicker.
2. The arm is filled with iron sand to reduce vibration
3. Robust cylinder guard



Avoid oil leakage

1. Stop valves prevent oil leakage when replacing breaker by bucket.
2. Multi-layer welding for pipe connectors

Long service life

1. Cylinder protective cover design
2. Q355B material, high-quality accessories, full weld, reinforced stress position, etc.

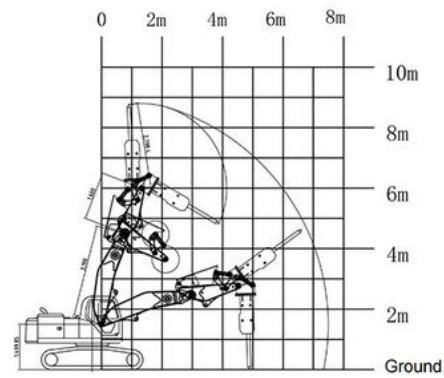




Pivot end

HD Boom with pivot end reinforcement Single piece design & thicker steel plates





Excavator model(ton)	Total length (mm)	Boom(mm)	Arm (mm)	Max height (mm)	Max depth(mm)
20-25T	13000	3200	1900	4500	8500
30-36T	15400	4200	1900	5000	10500
40-45T	18000	4500	1900	5000	11000
Welcome to send your excavator model to Aria~ and then we will quote for you technically.					

Tunnel arm configuration:

one middle arm cylinder, one bucket cylinder, six pins, one set of breaker hammer pipelines, six high-pressure hoses, two stop valves, and one set of connecting rod assembly.

Company Profile



Established in 2018, Kaiping Zhonghe Machinery is a combination of manufacturing and trading. Our products, including excavator long reach booms, demolition arms, 2-3 sections telescopic arms, tunnel arms, standard/rock buckets, grapples, and rippers, have been selling well in more than 40 countries and areas.

We are located in Guangdong Province, China. A 18000 m² 50 welding workers with over 7 years experience, 30 senior designers, and a high-tech R&D team (10+ years on customization, 100+ technical patents), strict production system (6+ years quality control and cost control) and warm-hearted service team. Our annual output of various types of excavator boom arms can reach up to 600 sets.

We strive to uphold our core principles of "Merit Quality, Sincerity Management, and Customer Satisfaction".



Design Department



Production Department



Sales Department



7+ years
excavator accessories
manufacturer



More than
100+ employees



18,000 square
meters factory



OEM/ODM
service

ZHONGHE triple quality control system

The first system is the **technical design drawing review mechanism**,
The second system is the **semi-finished product review mechanism**,
(each process has a detection testing for the previous process)

The third system is the **finished product testing**.

(Before painting, the overall inspection is carried out to check whether the design size matches the welding size, and whether the installation size meets the design requirement.)

To sum up, every single ZHONGHE product has been passed the above three-stage inspection system to ensure that is qualified before shipping.



Large double-sided floor boring machine



CNC plasma cutting machine



Automatic edge milling machine



Environmentally friendly spray booth

Exhibition



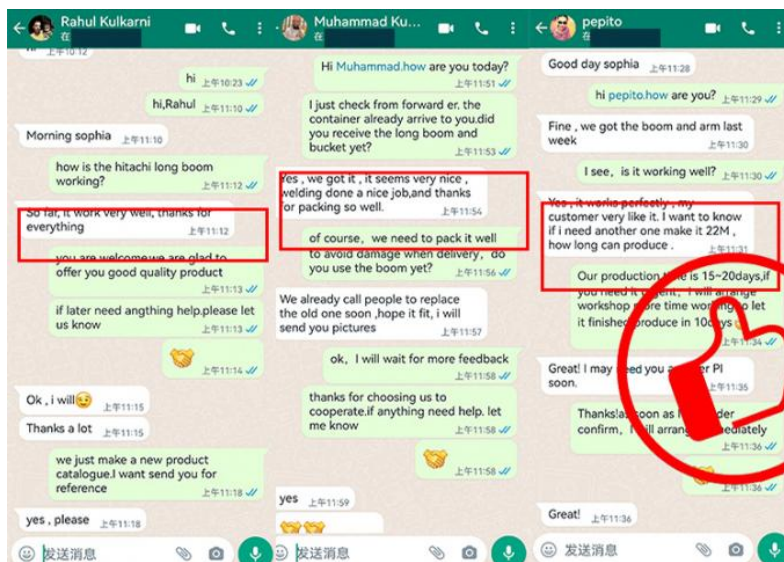
OUR CUSTOMERS

*Our products are stable used in Australia,
New Zealand, Norway, Sweden, USA,
Canada, Austria, Ireland, Britain, Malaysia,
Philippines, Mauritius, Reunion, Kenya,
Ecuador, Chile, etc*

Certificates



Custom Feedback



Packing & Delivery





To better ensure the safety of your goods, professional, environmentally friendly, convenient and efficient packaging services will be provided.

FAQ

1. Who are we?

We are based in Guangdong, China, start from 2018, sell to Southeast Asia(40.00%), Mid East(10.00%), North America(10.00%), South Asia(8.00%), Eastern Europe(8.00%), Oceania(8.00%), Eastern Asia(5.00%), Africa(5.00%), South America(4.00%), Northern Europe(2.00%). There are total about 51-100 people in our office.

2. How can we guarantee quality?

Always a pre-production sample before mass production;
Always final Inspection before shipment;

3. What can you buy from us?

Excavator Long Reach Boom, Excavator Telescopic Arm, Excavator Demolition Arm, Excavator Grapple, Excavator Bucket

4. Why should you buy from us not from other suppliers?

With more than 60 employees, it has its own unique research and development team in more than 10000 square meters of steel structure standardized plant. The annual production of various arms is up to 600 sets, and various buckets are 6000 pieces.

5. What services can we provide?

Accepted Delivery Terms: FOB, CIF, EXW, CIP
Accepted Payment Currency: USD, CNY;
Accepted Payment Type: T/T;

Other Products



Demolition Boom

- Long Demolition Boom /
- Super Long Demolish Distance /
- Safe Demolition /

[Customize now](#)



Long Reach Excavator Boom

- Long Reach Boom /
- Three Sections Demolition Arm /
- Demolition Extension Arm /

[Customize now](#)



Telescopic Boom

- Three-stage Extension /
- Super Long Control Distance /
- Flexible Expansion /

[Customize now](#)



Jiangmen Kaiping Zhonghe Machinery Manufacturing Co., Ltd



+86 13822325403



aria@excavatorlongarm.com



excavatorlongarm.com

9 Huancui West Road, Cuishanhu New Area, Kaiping City, Guangdong Province, China