



Long Reach Excavator Boom - Fits Multiple Brands

Our Product Introduction

for more products please visit us on excavatorlongarm.com

Basic Information

- Place of Origin: Guangdong Province, China
- Brand Name: Kaiping Zhonghe Machinery
- Certification: CE, Patents, ISO9001
- Model Number: ZHJCB-28
- Minimum Order Quantity: 1 Set
- Price: USD 1200 - USD 19000
- Packaging Details: Bubble / Wooden Cases
- Delivery Time: 15 days
- Payment Terms: L/C, T/T
- Supply Ability: 800 Sets



Product Specification

- Color: Red, Yellow, Blue, White Etc
- Suitable For: Digging Sand, Rock, Soil, Demolition Work
- After-sales: Technical Support, 24 Hours Service
- Length(m): 6m - 25m
- Tests: Full Tests Before Sending
- Suitable Excavators: 6ton - 66ton
- Warranty: 6 Months
- Material: Q355B, Q690D, Q355NE
- Bucket Capacity: 0.5cbm - 2cbm
- Quality: High Quality
- Highlight: long reach excavator boom,
excavator long reach arm,
multi-brand excavator boom



More Images



Product Description

Long Reach Arm / Long Reach Boom – Extended Reach for Enhanced Performance

Our Long Reach Arm / Long Reach Boom is engineered for superior reach and precision in demanding excavation and demolition applications. Designed to maximize efficiency in deep digging, dredging, and hard-to-access areas, this attachment ensures optimal performance while maintaining stability and control.



Key Features of Excavator Long Reach Arm Long Reach Boom

- Extended Reach – Specially designed for deep excavation, trenching, and slope work.
- High-Strength Steel Construction – Built for durability and resistance to wear and tear.
- Optimized Weight Distribution – Ensures balance and reduces machine strain.
- Versatile Applications – Ideal for demolition, river dredging, and deep foundation work.
- Compatibility – Fits a wide range of excavators (customizable based on machine size).



Three Layers with Four Passes Welding

Strong weldings ensure the boom end not easy cracking.



Perfect Middle Sleeve

The middle sleeve of big boom is processed as a whole, which is more firm and beautiful



Reinforcement of stress-bearing parts

Prolonger the service life-span & Not easy cracking



Premium Cylinder

Using high quality cylinder ensure no oil leakage and longer service life-span



Seamless Pipeline

Can bear huge stress and no oil leakage



Centralized lubrication system

Easy for later maintenance

Technical Specifications of Excavator Long Arm

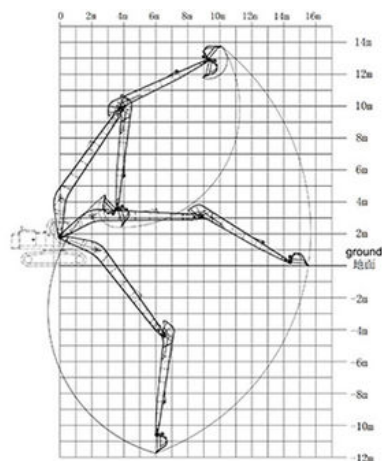
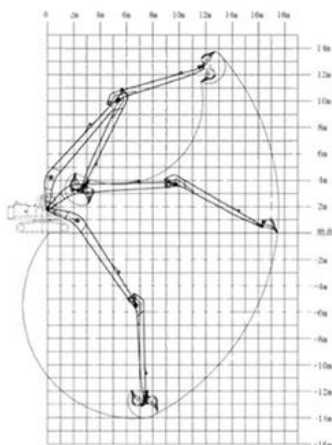
Material: High-grade steel with reinforced welds, Q355B, Q355NE, Q690D

Length Options: Customizable (typically 6m-25m+)

Finish: Anti-corrosion coating for extended lifespan

Excavator Model(ton)	Counterweight(ton)	Bucket Capacity(cbm) / Bucket Cylinder Size(ton)	Length of Long Reach Arm(m)	Total Length of Long Reach Arm(m)
25-28T	3.5T	0.4	12	21-22
		12T	10	
30-33T	2.5T	0.4	12	
		12T	10	
35-39T	1.5T	0.6	12	
		20T	10	
40-47T	0	0.8	12	
		20T	10	
48-55T	2T	1	12	21-22
		25T	10	

Welcome to send excavator model to us! Suitable length and model drawing will be sent soon.



Applications of Long Arm for Excavator

- ✓ Deep excavation & dredging
- ✓ Demolition of tall structures
- ✓ Slope shaping & land clearing
- ✓ Underwater and riverbank projects



Enhance your machine's capabilities with our Long Reach Boom—designed for efficiency, durability, and unmatched performance.



KAIPING ZHONGHE MACHINERY MANUFACTURING CO. LTD

Whatsapp: +86 13822325403

Email: aria@excavatorlongarm.com

Web: www.excavatorlongarm.com



Aria



Jiangmen Kaiping Zhonghe Machinery Manufacturing Co., Ltd



+86 13822325403



aria@excavatorlongarm.com



excavatorlongarm.com

9 Huancui West Road, Cuishanhu New Area, Kaiping City, Guangdong Province, China