



## ZH OEM Customized Q355B 8M 10M 11M 12M Excavator Long Reach Arm Long Reach Excavator Boom Excavator Sliding Arm for River Dredging and Cleaning

Our Product Introduction

for more products please visit us on excavatorlongarm.com

### Basic Information

- Place of Origin: Guangdong, China
- Brand Name: Zhonghe
- Certification: CE
- Model Number: HB001
- Minimum Order Quantity: 1 piece
- Price: \$5500/pieces
- Packaging Details: Bubble bag packaging
- Delivery Time: 20-30 work day
- Payment Terms: T/T
- Supply Ability: 10 Piece/Pieces per Month

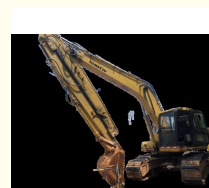


### Product Specification

- Brand Name: Zhonghe Machinery
- Product Name: Excavator Sliding Arm
- Application: Excavator
- Moving Type: Crawler Excavator
- Maximum Digging Depth: 8M, 10M, 11M, 12M
- Material: Q355B/Q690
- Color: Customer's Request
- Warranty: 6 Months
- Condition: 100%new
- Packing: Bubble Bag Packaging
- After-sales Service Provided: Video Technical Support



### More Images



### Product Description

#### ZH OEM Customized Q355B 8M 10M 11M 12M Excavator Long Reach Arm Long Reach Excavator Boom Excavator Sliding Arm for River Dredging and Cleaning

##### Highlights of ZH 8M 10M 11M 12M Excavator Sliding Arm

1. **Double limit design**, to avoid the telescopic cylinder pulling cylinder, and at the same time reduce the running vibration.
2. **Slider adopts whole plate cutting, non-splice welding design**, longer service life.
3. **Wear-resistant rubber** is added inside the slider, which is easy to replace and maintain.
4. **Up and down slide plate design steel slider**, to avoid direct wear and tear of the slide plate, improve service life.

Our Product Introduction



Excavator model(ton)	Digging depth(m)	Weight(kgs)	Bucket capacity(cbm)
12-15T	8	200	0.2-0.3
20-25T	10	800	0.4-0.7
20-25T	12	1300	0.4-0.7
30-35T	16	2200	0.6-0.9
40-45T	16	2600	0.8-1.3

Welcome to send your excavator model to Aria~ and then we will quote for you technically.

#### Sliding arm configuration:

one set of sliding arms, one bucket, two pins, two high-pressure hoses, and one two-way foot switch.



#### Warranty:

6 months for the telescopic boom  
6 months for the cylinder  
3 months for the bucket











The double limit design of the sliding cylinder prevents cylinder jolting and over-pulling.



Telescopic cylinder double oil seal design extends the service life of the cylinder



Cover plates are cut from a whole piece but not spliced, to be more firm and not easy to deform.



Built-in wear-resistant plastic slider, Easy to replace and maintain



The tube has leakage holes to reduce water accumulation inside the arm tube, thereby reducing internal corrosion.



Compared with other peer products, our product advantages are:





## Company Profile



Established in 2018, Kaiping Zhonghe Machinery is a combination of manufacturing and trading. Our products, including excavator long reach booms, demolition arms, 2-3 sections telescopic arms, tunnel arms, standard/rock buckets, grapples, and rippers, have been selling well in more than 40 countries and areas.

We are located in Guangdong Province, China. A 18000 m<sup>2</sup> 50 welding workers with over 7 years experience, 30 senior designers, and a high-tech R&D team (10+ years on customization, 100+ technical patents), strict production system (6+ years quality control and cost control) and warm-hearted service team. Our annual output of various types of excavator boom arms can reach up to 600 sets.

We strive to uphold our core principles of "Merit Quality, Sincerity Management, and Customer Satisfaction".



**Design Department**



**Production Department**



**Sales Department**



**7+ years**  
excavator accessories  
manufacturer



**More than**  
**100+ employees**



**18,000 square**  
**meters factory**



**OEM/ODM**  
**service**

### **Production Process--Professional Full Experienced**

1. Panel is cut by CNC plasma machine with less deformation
2. Each welder has more than ten years of experience to ensure stable quality
3. environmentally friendly verified spraying room
4. professional and beautiful paint finish
5. three layers with four passes welding
6. Graphite alloy copper sleeve
7. Seamless precision steel pipe
8. Centralized lubrication system



Large double-sided floor boring machine



CNC plasma cutting machine



Automatic edge milling machine



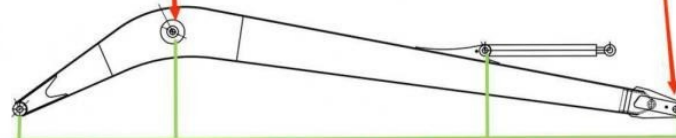
Environmentally friendly spray booth



## Double-sided boring lathe



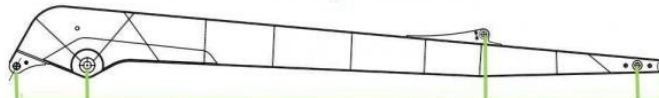
After the excavator boom and arm are assembled, the pins on the boom are drilled to ensure that the pins on the boom are parallel to each other and the cross section of the pin hole is perpendicular to the pin. The double-sided boring machine of the boom makes the hole position more accurate and the quality higher.



Make sure the cross section of the pin hole is perpendicular to the shaft.



Make sure the axis is parallel to the axis



Make sure the cross section of the pin hole is perpendicular to the shaft



Make sure the axis is parallel to the axis

Certificates



## Packing & Delivery



To better ensure the safety of your goods, professional, environmentally friendly, convenient and efficient packaging services will be provided.

## FAQ

### 1. Who are we?

We are based in Guangdong, China, start from 2018, sell to Southeast Asia(40.00%), Mid East(10.00%), North America(10.00%), South Asia(8.00%), Eastern Europe(8.00%), Oceania(8.00%), Eastern Asia(5.00%), Africa(5.00%), South America(4.00%), Northern Europe(2.00%). There are total about 51-100 people in our office.

### 2. How can we guarantee quality?

Always a pre-production sample before mass production;  
Always final inspection before shipment;

### 3. What can you buy from us?

Excavator Long Reach Boom, Excavator Telescopic Arm, Excavator Demolition Arm, Excavator Grapple, Excavator Bucket

### 4. Why should you buy from us not from other suppliers?

With more than 60 employees, it has its own unique research and development team in more than 10000 square meters of steel structure standardized plant. The annual production of various arms is up to 600 sets, and various buckets are 6000 pieces.

### 5. What services can we provide?

Accepted Delivery Terms: FOB, CIF, EXW, CIP  
Accepted Payment Currency: USD, CNY;  
Accepted Payment Type: T/T;

## Other Products



## Demolition Boom

- Long Demolition Boom /
- Super Long Demolish Distance /
- Safe Demolition /

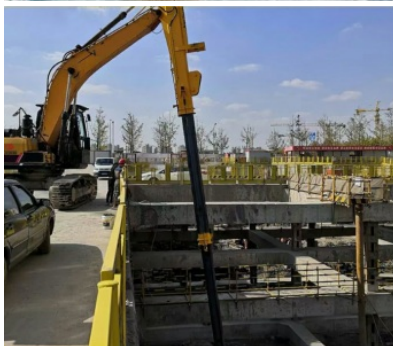
[Customize now](#)



## Long Reach Excavator Boom

- Long Reach Boom /
- Three Sections Demolition Arm /
- Demolition Extension Arm /

[Customize now](#)



## Telescopic Boom

- Three-stage Extension /
- Super Long Control Distance /
- Flexible Expansion /

[Customize now](#)



Jiangmen Kaiping Zhonghe Machinery Manufacturing Co., Ltd



+86 13822325403



aria@excavatorlongarm.com



excavatorlongarm.com

9 Huancui West Road, Cuishanhu New Area, Kaiping City, Guangdong Province, China