



Hitachi Excavator Long Reach Boom Arm Excavator Long Arm

Our Product Introduction

for more products please visit us on excavatorlongarm.com

Basic Information

- Place of Origin: Guangdong Province, China
- Brand Name: Kaiping Zhonghe Machinery
- Certification: CE, Patent, ISO
- Model Number: Long Reach Boom09
- Minimum Order Quantity: 1 set / piece
- Price: USD 100.00-USD7800.00
- Packaging Details: bubble / wooden cases
- Delivery Time: 7-20 working days
- Payment Terms: T/T, L/C
- Supply Ability: 5 sets per week



Product Specification

- Bucket Cylinder: Available
- Material: Q355B, Q690D Material
- Color: Customized
- Warranty: 6 Months
- Length: 6m - 24m
- Condition: New
- Tests: Yes
- OEM/ODM: Yes
- Quality: Premium
- After-sales Service: Yes



More Images



Product Description

Hitachi Excavator Long Reach Boom Arm Long Reach Excavator Longer Service Life-span

Premium Long Reach Arm Features

Extended Reach:

Designed for optimal performance in deep excavation and material handling, allowing the excavator to reach farther distances without compromising stability.

Durable Construction:

Made from high-strength steel and reinforced materials to withstand heavy loads and demanding conditions, ensuring longevity and reduced wear.

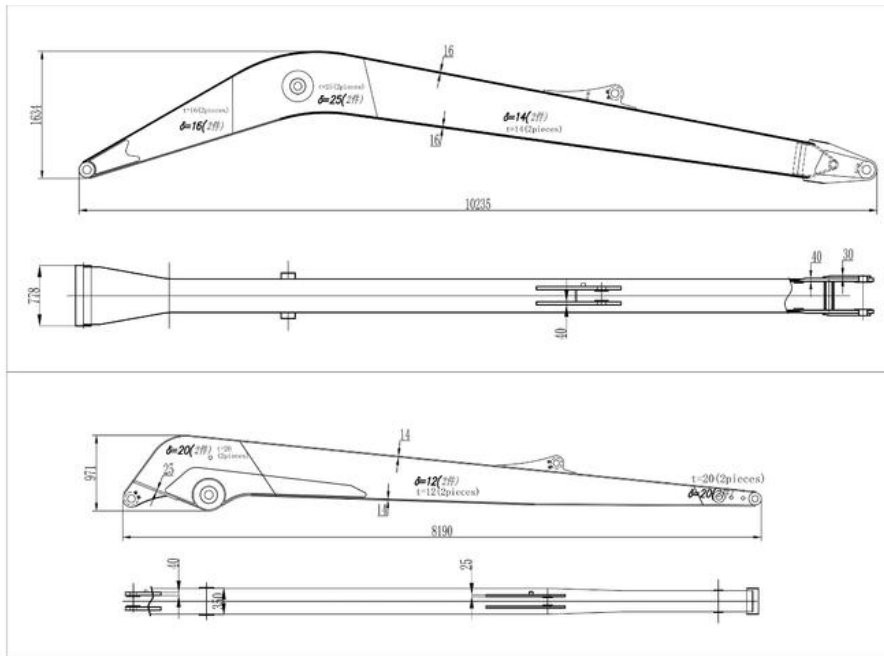
Precision Engineering:

Utilizes advanced manufacturing techniques for precise fit and alignment, enhancing the accuracy of movements and reducing the risk of mechanical failures.



Specifications of Zhonghe Machinery's Long Reach Excavator

Excavator Model (ton)	Total Length (m)
6-8T	7-12m
10-16T	10-14m
20-22T	12-14m
20-47T	17-18m
24-47T	19-20m
25-47T	21-22m
30-55T	23-24m



Excavator Long Arm Suitable for Various Excavator Brands



Some Engineerings of Excavator Long Boom Arm for Sale

* 15m Long Boom Excavator For Sale for PC200



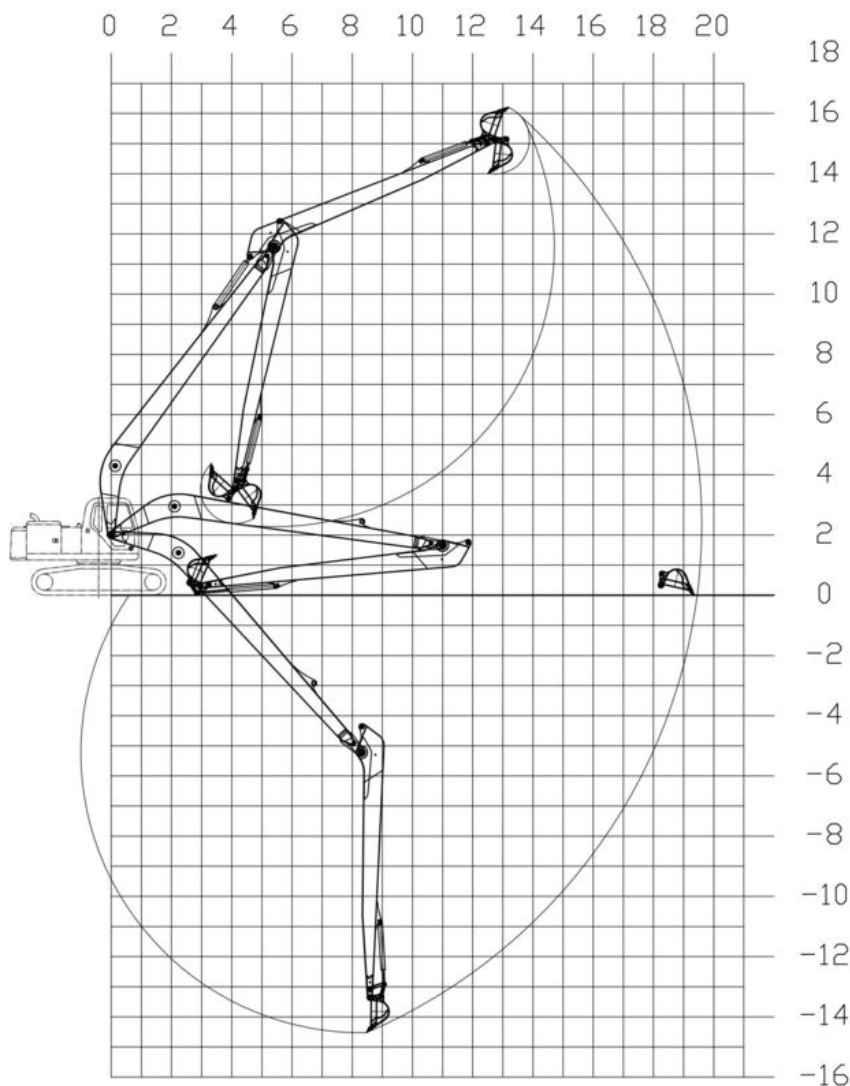
*** 16m Long Excavator Boom for Zoomlion 550**



*** 30m Long Boom Excavator for Hitachi 1200**



Model drawing of one set of 20m long boom excavator



Feedback of Long Reach Boom Arm from Clients

Increased Reach:

Users appreciate the extended reach of the long reach arm for excavator, which allows them to access hard-to-reach areas without moving the excavator frequently.

Enhanced Efficiency:

Many operators report significant time savings on projects, as the long reach arm for excavator enables them to complete tasks faster and with fewer machine movements.

Stability:

Feedback often highlights the improved stability during operation, even when fully extended, making it easier to handle heavier loads.

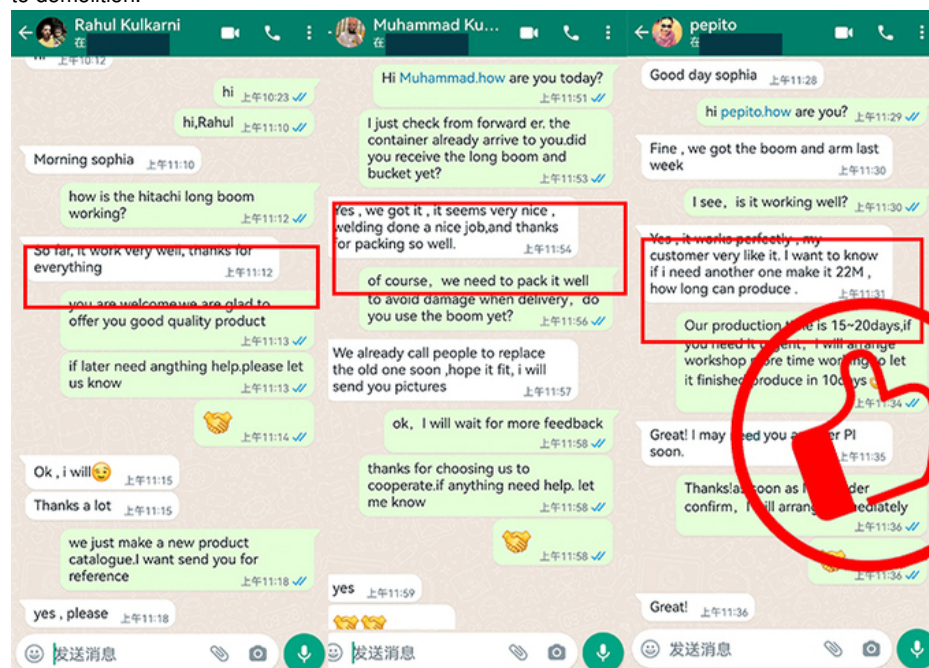
Durability:

Operators note the robust construction of the long reach boom arm, which withstands challenging conditions and heavy use.

without showing signs of wear.

Versatility:

The ability to attach various tools and implements is frequently praised, allowing for a wide range of applications from digging to demolition.



Welcome to send your excavator model to us!



KAIPING ZHONGHE MACHINERY MANUFACTURING CO. LTD

Whatsapp: +86 13822325403

Email: aria@excavatorlongarm.com

Web: www.excavatorlongarm.com



Aria



Jiangmen Kaiping Zhonghe Machinery Manufacturing Co., Ltd



+86 13822325403



aria@excavatorlongarm.com



excavatorlongarm.com

9 Huancui West Road, Cuishanhu New Area, Kaiping City, Guangdong Province, China