



## 16-20 Meters Three-Section Demolition Long Boom for Excavators ZX250 ZX260 ZX330 for Construction Machine

Our Product Introduction

for more products please visit us on excavatorlongarm.com

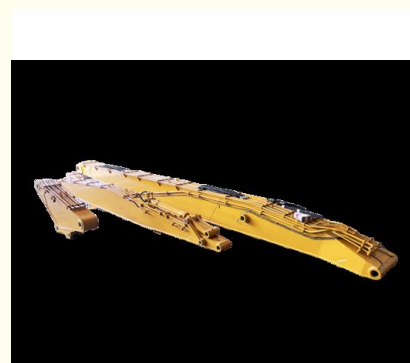
### Basic Information

- Place of Origin: Guangdong, China
- Brand Name: Zhonghe
- Certification: CE
- Minimum Order Quantity: 1 piece
- Price: \$9950/pieces
- Packaging Details: Bubble bag packaging
- Delivery Time: 20-30 work day
- Payment Terms: T/T
- Supply Ability: 5 Piece/Pieces per Month



### Product Specification

- Application: Excavator
- Brand Name: Zhonghe
- Part Name: Boom/Arm/Bucket Cylinder
- Material: Q355D/Q690D
- Color: As Customer Requires
- Warranty: 6 Months
- Condition: 100%new
- Quality: High-Quality
- MOQ: 1 PCS
- Packing: Standard Packing
- After-sales Service Provided: Online Video Support



### More Images



## PRODUCT DESCRIPTION

**16-20 Meters Three-Section Demolition Long Boom for Excavators  
ZX250 ZX260 ZX330 for Construction Machine**



**EXCAVATOR DEMOLITION BOOM ARM**

Support OEM, ODM, safe demolition, high efficiency, factory price



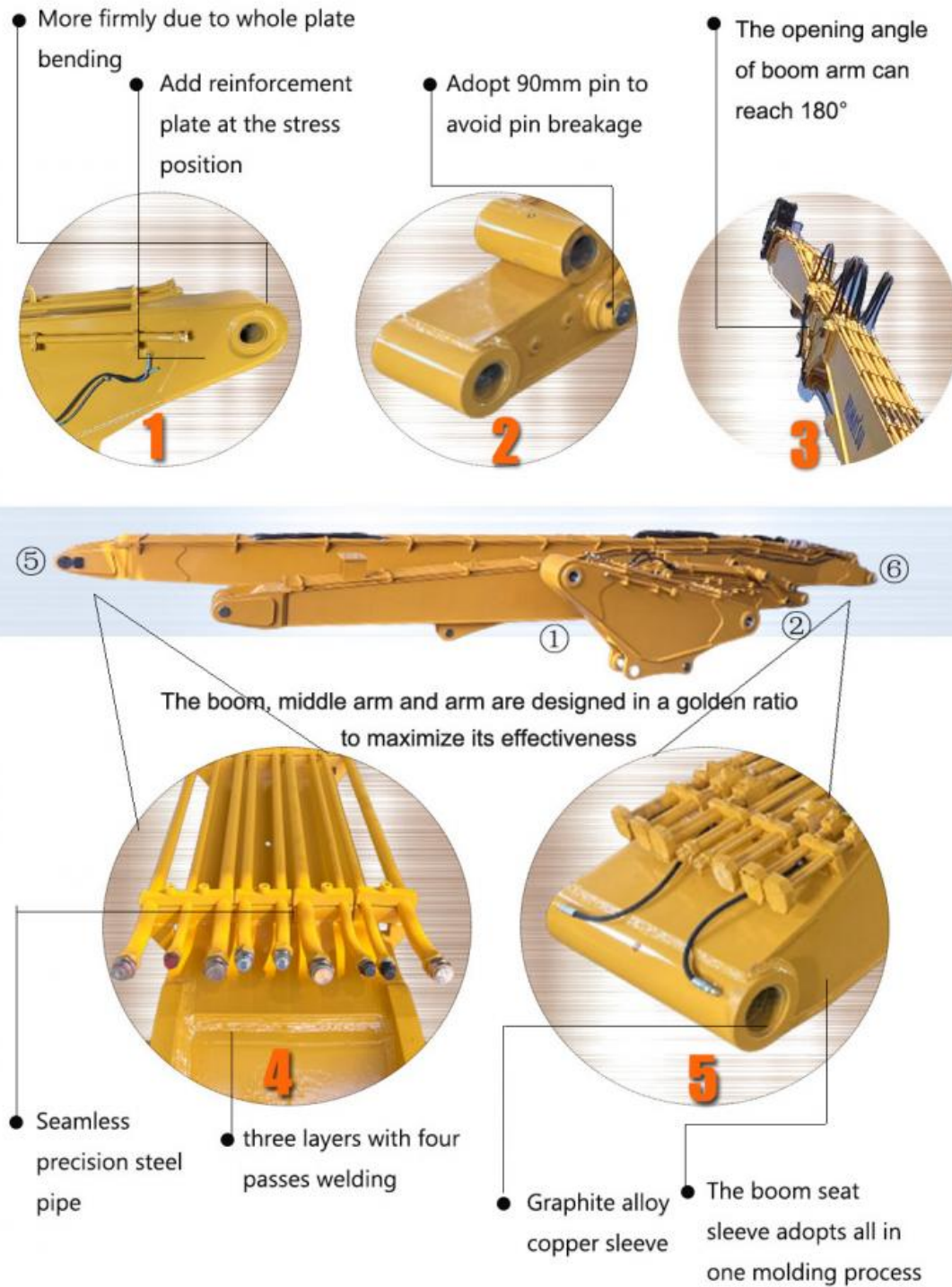
### High Reach Demolition Arm

- \* Seamless precision steel pipe
- \* Q690D for boom's upper and lower cover
- \* Adopt 90mm pin to avoid pin breakage
- \* The pipeline is hidden to avoid being smashed
- \* Hydraulic pipelines section design, convenient for later maintenance

A high reach demolition boom adds a middle arm to the two-section demolition boom, increasing the working safety distance. It typically equipped with a breaker hammer or a hydraulic shear for high building demolition projects.

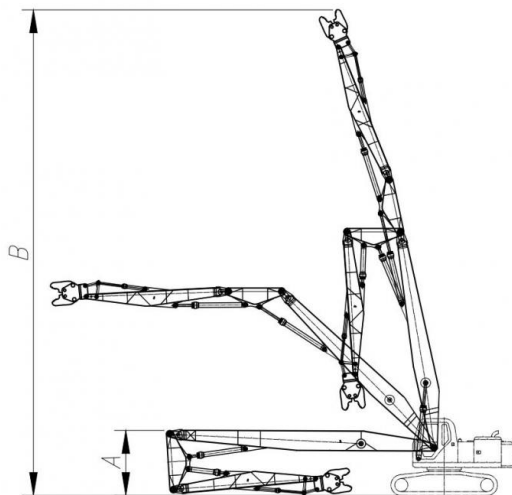
High reach deomolition armwill boring after welding , the accuracy is high precision as the original arm to prolong it service life.

## Details Advantage





## Specification



## Standard Configuration

1. Boom, arm and middle arm
2. Linkage assembly\*1 kit
3. Bucket cylinder (22 ton type)\*1
4. High pressure hoses\*18
5. Pins\*8
6. Stop valves\*10
7. Lubrication hoses\*5
8. Counterweight optional

Excavator Ton	Total Length(mm)	(A)Transport Height(mm)	(B)Maximum Lifting Height(mm)	Limit weight of hydraulic shear(kg)	Cylinder (Ton)	Add Weight(Ton)
25T	16000	3160	14900	2000	20T	4T
30T	18000	3300	17000	2000	20T	4.5T
35T	20000	3300	19000	2000	20T	4.5T
40T	22000	3400	21050	2000	20T	5T
45T	24000	3400	23100	2000	20T	5T



**Company Profile**





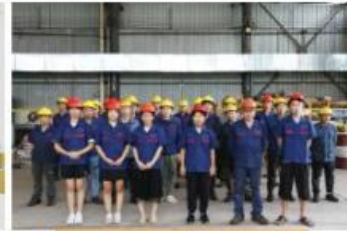
### 14000m<sup>2</sup> Workshop

We have more than 14000m<sup>2</sup> steel structure workshop with lots of high precision processing equipments.



### R&D Team

We use precision drawing software to achieve the max working range under the premise of safe operation.



### Skillful Workers

There are more than 60 skillful staffs, 30 welding workers with over 5 years welding experience.



### Customized

1. Fit all brand.
2. Color, length, material are customized.
3. Extra pipeline can be added.



### Prompt Lead Time

1. Our lead time is 7-15 days.
2. Our annual output of excavator boom arms can reach 600 sets.



### 100% Service

1. Online support within 24 hours.
2. Appointment video technical support.

## PRODUCTION ADVANTAGES



### ZHONGHE triple quality control system

The first system is the technical design drawing review mechanism,  
The second system is the semi-finished product review mechanism,  
(each process has a detection testing for the previous process)  
The third system is the finished product testing.

(Before painting, the overall inspection is carried out to check whether the design size matches the welding size, and whether the installation size meets the design requirement.)

To sum up, every single ZHONGHE product has been passed the above three-stage inspection system to ensure that is qualified before shipping.



**Large double-sided boring machine**



**CNC plasma cutting machine**



**Automatic edge milling machine**



**Environmentally friendly spray booth**

## Exhibition



## OUR CUSTOMERS

*Our products are stable used in Australia,  
New Zealand, Norway, Sweden, USA,  
Canada, Austria, Ireland, Britain, Malaysia,  
Philippines, Mauritius, Reunion, Kenya,  
Ecuador, Chile, etc*

## Certificates



## PACKING & DELIVERY



Bubble bag packaging for most products, Wooden case for little products, like buckets  
Iron frame support for boom arms.

**The accessories and package of excavator long boom arm are subjected to our final confirmation.**

## FAQ

### 1. Who are we?

Kaiping Zhonghe Machinery Manufacturing Co., Ltd., manufacturing and trading combo, specializes in customizing excavator long reach boom arm and attachments for 5 years.

### 2. How can we guarantee quality?

Always final inspection before shipment;

### 3. What can you buy from us?

Excavator long reach boom arm, demolition arm, 2 or 3 sections telescopic arm, tunnel arm, standard/strengthen/rock bucket, gripper, ripper, etc. Our annual output of various types of excavator boom arms can reach 600 sets.

### 4. Why should you buy from us not from other suppliers?

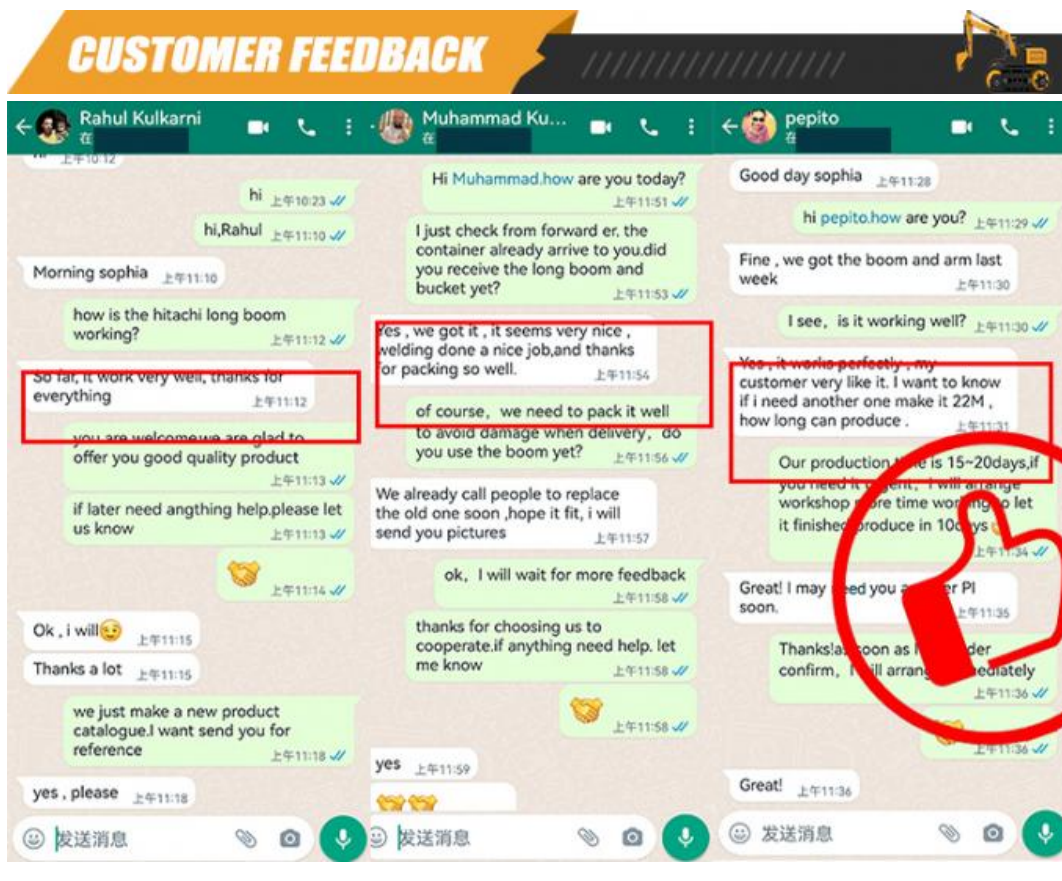
We can give you a moderate price with the same quality as we are original manufacturer. We always use high quality material, professional design, keep high quality control during the industry.

### 5. What's your terms of payment?

We prefer T/T (50/50) through Ali Credit Insurance as a trial order.

### 6. How long to receive a quotation/PI?

Within 2 working days after you ensure your excavator model and boom arm working condition.



Jiangmen Kaiping Zhonghe Machinery Manufacturing Co., Ltd



+86 13822325403



aria@excavatorlongarm.com



excavatorlongarm.com

9 Huancui West Road, Cuishanhu New Area, Kaiping City, Guangdong Province, China