



## Excavator Tunnel Arm 30 Ton Tunnel Boom Arm 6 Months Warranty

Our Product Introduction

for more products please visit us on excavatorlongarm.com

### Basic Information

- Place of Origin: Guangdong Province, China
- Brand Name: Kaiping Zhonghe Machinery Manufacturing Co. Ltd
- Certification: CE, Patent, ISO9001
- Model Number: 30 Ton Tunnel Boom Arm
- Minimum Order Quantity: 1 set / piece
- Price: USD 1000.00-USD9000.00
- Packaging Details: bubble / wooden cases / others as you request
- Delivery Time: 5-20/working days
- Payment Terms: T/T, L/C
- Supply Ability: 5 sets per week

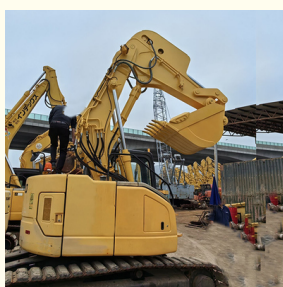


### Product Specification

- Features: Heavy Duty Longer Service Life-span
- Connectors: High Quality Connectors
- High Efficiency: YES
- Suitable Excavators: 6ton - 60ton
- Working Condition: Digging Tunnel, Hard Rock
- Warranty: 6 Months For Arm And Boom, 3 Months For Bucket
- OEM/ODM: YES
- Material: Q355B Q690D Or Others As You Request
- Tests: YES



### More Images



## Product Description

### 30 ton Digger Tunnel Arm Excavator Tunnel Arm with 6 Months Warranty

#### Features of the Excavator Tunnel Arm

**Enhanced Maneuverability:** The tunnel arm for excavator design allows for improved navigation in confined spaces, making it ideal for urban construction and tunneling applications.

**Robust Construction:** Made from high-strength materials such as Q355B and Q690D, the shorten arm tunnel boom offers exceptional durability and resistance to wear, ensuring longevity even in challenging environments.

**Versatile Applications:** Suitable for a variety of tasks, including digging, lifting, and material handling, the excavator tunnel arm enhances the overall functionality of the excavator.

**Easy Installation:** The shorten arm tunnel boom is designed for quick and straightforward installation, allowing for minimal downtime and immediate productivity enhancements.

**Precision Engineering:** Engineered for optimal performance, the tunnel arm for excavator ensures smooth operation and precise control, increasing job site efficiency.

**Adaptable to Various Excavator Models:** The excavator tunnel arm is compatible with a range of excavator models, providing flexibility for different equipment fleets.

**Improved Stability:** The design enhances the stability of the excavator during operation, reducing the risk of tipping and ensuring safer working conditions.

**Maintenance-Friendly:** Built with easy access points for maintenance, the tunnel arm for excavator facilitates routine checks and servicing, promoting long-term reliability.



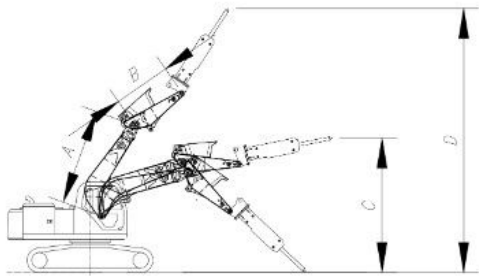
Excavator tunnel arm suitable for various excavators: Hitachi, Sany, Kobelco, Cat, Kato etc



#### Specification of one set of shorten arm tunnel boom:

Excavator Model(ton)	Thickness of steel board(mm)
6-8T	10mm
10T-15T	14mm
20-24T	16mm
30-36T	25mm
45-50T	30mm

Welcome to send your excavator model to us. The model drawing of excavator tunnel arm will be sent soon.



### ZHONGHE Advantages

1. Fashionable style
2. Professional Team
3. Quality control
4. Moderate price
5. CE certification
6. Promptly answer
7. Patented technology
8. Enrich production experience

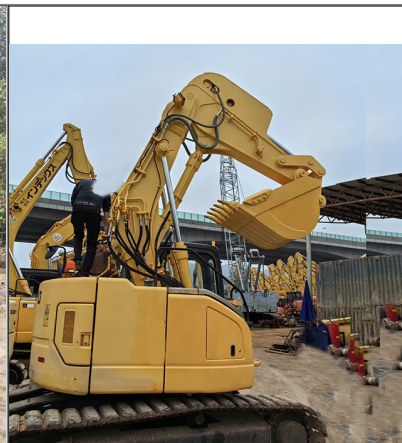
The front excavator attachments can be a bucket / breaker:



More Excavator Tunnel Arm Show Up:



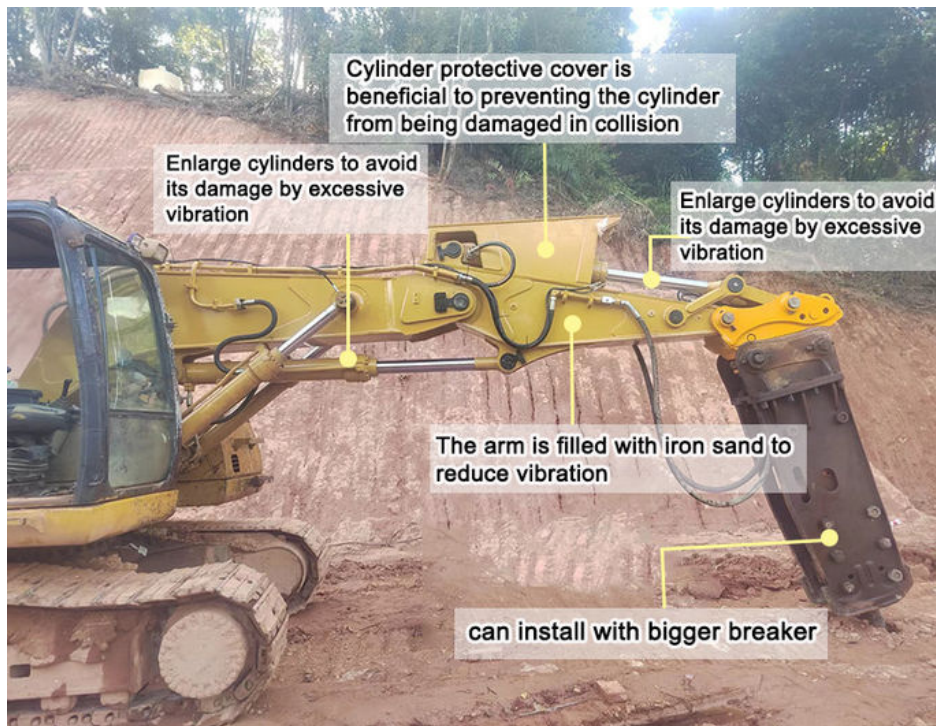




**Details of one set of shorten arm tunnel boom for excavator:**

Material	Q355B / Q690D
Features	Heavy Duty
Suitable working environments	Digging Tunnels, house foundations, etc





Professional design of one set of shorten arm tunnel boom:



Three-layer four-pass welding process, stronger welding



Multi-layer welding of pipe connectors to reduce the risk of oil leakage

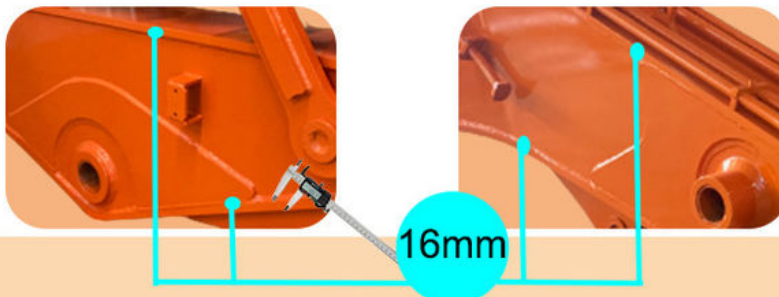


The upper and lower cover plates are thicker.  
longer life-span & not easy cracking



1.2 inch thick  
seamless pipe

Precision pipeline, not prone to bursting and oil leakage



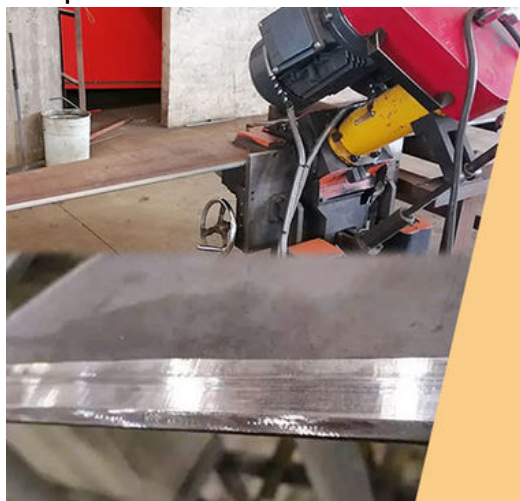
16mm

The upper plate and lower plate are thicker  
& Multiple welding  
Not easy cracking





More production details of one set of shorten arm tunnel boom:



Beveling Machine  
Every board will be  
beveled before being  
welded which enhances  
the weld bead

Panel is cut by CNC  
plasma machine with  
less deformation



Large floor-standing  
double-sided boring  
machine  
Higher accuracy

Contact us---sales manager about excavator tunnel arm:



Aria

KAIPING ZHONGHE MACHINERY MANUFACTURING CO. LTD

Whatsapp: +86 13822325403

Email: [aria@excavatorlongarm.com](mailto:aria@excavatorlongarm.com)

Web: [www.excavatorlongarm.com](http://www.excavatorlongarm.com)



Welcome to contact for a big discount!

Whatsapp: [wa.me/+8613822325403](https://wa.me/+8613822325403)

Email: [aria@excavatorlongarm.com](mailto:aria@excavatorlongarm.com)

Website link: [www.excavatorlongarm.com](http://www.excavatorlongarm.com)

manufacturer excavatorlongarm longreachboomexcavator



Jiangmen Kaiping Zhonghe Machinery Manufacturing Co., Ltd



+86 13822325403



[aria@excavatorlongarm.com](mailto:aria@excavatorlongarm.com)



[excavatorlongarm.com](http://excavatorlongarm.com)

9 Huancui West Road, Cuishanhu New Area, Kaiping City, Guangdong Province, China