



Excavator Long Reach Boom And Telescopic Arm 12m

Our Product Introduction

for more products please visit us on excavatorlongarm.com

Basic Information

- Place of Origin: Guangdong Province, China
- Brand Name: Kaiping Zhonghe Machinery Manufacturing Co. Ltd
- Certification: CE, Patents, ISO
- Model Number: Excavator Dipper Arm 09
- Minimum Order Quantity: 1 set / piece
- Price: USD 199.00-USD10999.00
- Packaging Details: Bubble / Wooden cases
- Delivery Time: 5-25/works
- Payment Terms: T/T, L/C or others as you request
- Supply Ability: 5 sets per week



Product Specification

- Warranty: 6 Months
- High Efficiency: Yes
- Digging Depth: 8m 10m 12m 14m
- Suitable Excavators: 6ton 20ton 30ton 40ton 55ton
- Color: White Yellow Blue Red Etc
- Cylinders: High Quality Cylinders
- Material: Q355B, Q690D
- Bucket Capacity: 0.5cbm 0.8cbm 1cbm



More Images



Product Description

Excavator dipper arm's Overview:

The excavator telescopic arm, often referred to as the boom or stick, is a crucial component of an excavator's arm assembly. Designed to provide the necessary reach and digging capability, it plays a vital role in the overall performance of the machine. The dipper arm connects the bucket to the main body of the excavator and is pivotal in executing various excavation tasks.

Key Features of one set of telescopic arm for excavator:

Enhanced Reach: The excavator telescopic arm extends the excavator's reach, allowing operators to access deeper and more challenging excavation sites. Its length can vary based on the excavator model and the specific requirements of the task.

Durable Construction: Typically made from high-strength steel, telescopic arm for excavator is engineered to withstand the stresses of heavy-duty operations. Its robust design ensures longevity and reliability, even in demanding conditions.

Versatility: The telescopic arm excavator is compatible with various attachments, including buckets, grapples, and hammers. This versatility allows operators to perform a wide range of tasks, from digging and trenching to demolition and material handling.

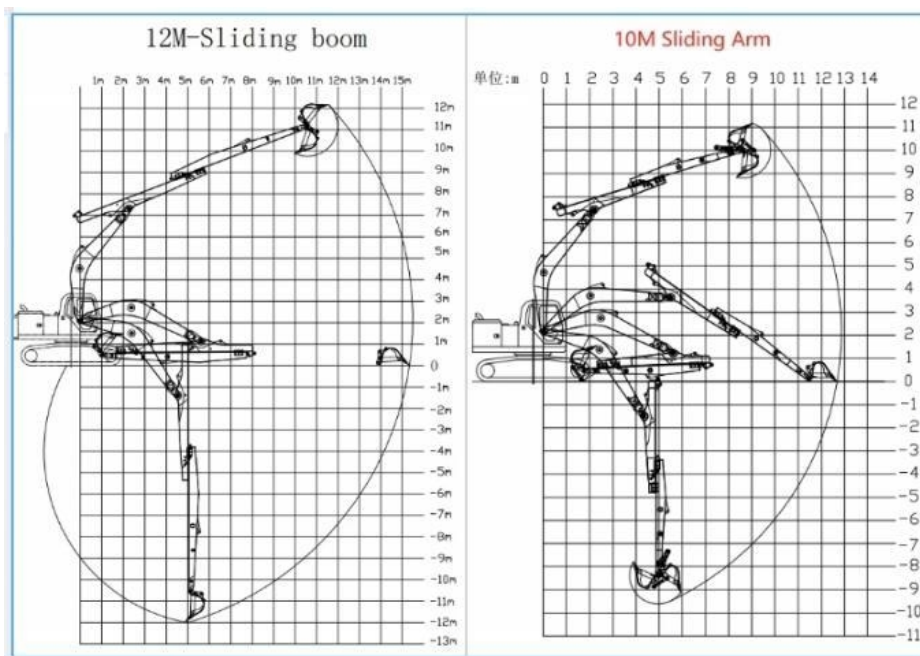
Package Contents of One set of excavator section telescopic arm:

1 telescopic arm
1 bucket
Pins
High pressure hoses
Double foot switch



Specifications of one set of telescopic boom excavator:

Product name	Excavator model(ton)	Bucket capacity(cbm)	Digging depth(m)
Excavator Sliding Arm	3-4T	0.1	4
	6-8T	0.2	6
	10-12T	0.35	8
	20-27T	0.5-0.6	10
	20-27T	0.5-0.6	11
	20-27T	0.45	12
	30-36T	1.2	10
	30-36T	1	12
		0.6	12

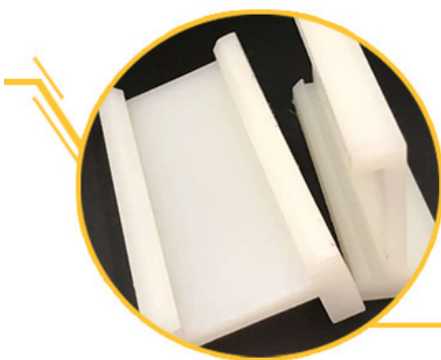


Welcome to send your excavator model to us!

Installation Instructions of one set of excavator telescopic boom:

ZHONGHE Sliding Arm

- Compact alternative to a larger model, capable of digging further, and with a significantly smaller footprint.
- Meets the need for powerful machines for deep excavation projects in confined areas.



Easy to Maintain

ZHONGHE sliding arm adopt antiwear nylon sliding plates rather than traditional pulley, which can be replaced quickly and conveniently.

Robust Sliding Structure

1. The lower cover of the upper sliding arm and the upper cover of the lower fixing arm are both 20mm.



2. Cover plates are cut from a whole piece but not spliced, so as to be more firm and not easy to deform.



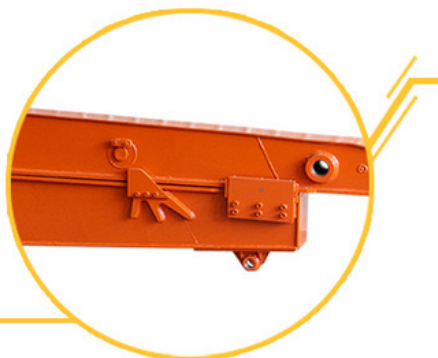
Avoid Oil Leakage

The double oil seal design for the built-in telescopic cylinder prevents hydraulic oil from leaking, prolongs the service life of the sliding cylinder.

Long Service Life

1. Double limit design of the sliding cylinder prevents cylinder jolting and overpulling.

2. Steel sliders are welded between the skateboards to resist wear.



01

Panel is cut by CNC plasma machine with less deformation

02

Tolerance within 5-10um, ensure the accuracy of hole

Production advantage

03

Environmentally friendly verified spraying room, professional and beautiful paint finish

04

GMAW-Gas Metal Arc Welding



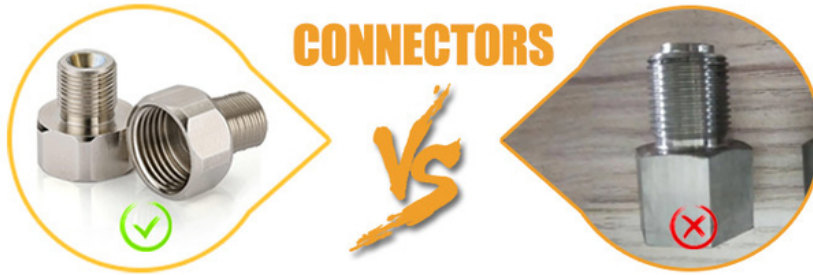
Ours-Goldenbridge

SOLDER

VS



Others



Ours-Ningbo connector

Others



Ours-Edge-mining

Others-No edge-mining

1. Extended Reach and Depth

The most notable advantage of a excavator telescope is its ability to extend and retract, allowing operators to achieve a greater reach and digging depth. This flexibility is particularly beneficial for tasks that require deep excavations, such as foundation work, caisson installations, and trenching. Operators can access hard-to-reach areas without the need for repositioning the entire excavator.

2. Increased Versatility

The telescopic crawler excavator can accommodate various attachments, including buckets, grapples, and hydraulic hammers, making it suitable for a wide range of applications. This versatility allows contractors to perform multiple tasks with a single piece of equipment, optimizing resource utilization and reducing equipment costs.

3. Improved Maneuverability

With the ability to extend and retract, telescopic cab excavator enhances the excavator's maneuverability in tight spaces. Operators can perform precise digging and material handling without needing to move the entire machine, improving efficiency in congested job sites.

4. Enhanced Stability

Many hydraulic telescoping excavator are designed with stability in mind, featuring a low center of gravity and robust construction. This design minimizes the risk of tipping during operation, allowing for safer handling of heavy loads and reducing the likelihood of accidents on-site.

Contact Information

For further assistance, please reach out to our customer service team:

Zhonghe Machinery is a big Manufacturer of Excavator sliding arm

Any interest,

Welcome to contact Aria--sales manager of Zhonghe Machinery.

Whatsapp: wa.me/+8613822325403

Email: aria@excavatorboomarm.com

13822325403@163.com

Website link: www.excavatorlongarm.com



Sales Manager

Manufacturer of Excavator Arm and Boom

Whatsapp: +86 13822325403

Email: aria@excavatorboomarm.com
13822325403@163.com

Web: www.excavatorlongarm.com



#excavatorarm #longboomexcavator #longreachboomexcavator #longboomexcavatorforsale



Jiangmen Kaiping Zhonghe Machinery Manufacturing Co., Ltd



+86 13822325403



aria@excavatorboomarm.com



excavatorlongarm.com

9 Huancui West Road, Cuishanhu New Area, Kaiping City, Guangdong Province, China