



13.8m 15m 19m Excavator Pile Driving Arm Pile Hammer for 50Ton 65Ton Excavator

Our Product Introduction

for more products please visit us on excavatorlongarm.com

Basic Information

- Place of Origin: Guangdong Province, China
- Brand Name: Kaiping Zhonghe Machinery Manufacturing Co. Ltd
- Certification: CE, Patent, ISO
- Model Number: Excavator Pile Driving Arm 09
- Minimum Order Quantity: 1 set / piece
- Price: USD 199.00-USD12799.00
- Packaging Details: bubble / wooden cases / others as you request
- Delivery Time: 5-25/working days
- Payment Terms: T/T, L/C
- Supply Ability: 5 sets per week



Product Specification

- Features: Long Reach, High Strength
- Precision: High Precision
- Connectors: Thickened Connectors, Can Bear Huge Stress
- Warranty: 6 Months For Pile Arm Pile Boom
- Welding Wire: Jinqiao Welding Wire, Better Welding Wire
- Quality: Premium Quality Wear Resistant
- After Sales Service: Available
- Material: Shaogang Q355B, Q690D, Better Welding Performance
- Pipeline: Seamless Pipeline, Not Easy Cracking
- OEM / ODM: YES
- Highlight: 13.8m excavator pile driving arm, 15m pile hammer for 50Ton excavator, 19m excavator pile driving arm with warranty



More Images



Product Description

Excavator Pile Driver Arm Pile Driving Boom For 30ton 45ton 60ton Excavator

Sales annual amount reach 100 sets, clients 50+

Introduction of one set of excavator pile driving arm pile arm pile boom:

Material	Q355B, Q690D
Opening angle	160 degree
Suitable for	various piles
Suitable Excavator Brands	Komatsu Sany Hitachi Zoomlion Kobelco Kato etc

Welcome to send your excavator model to us for double check.



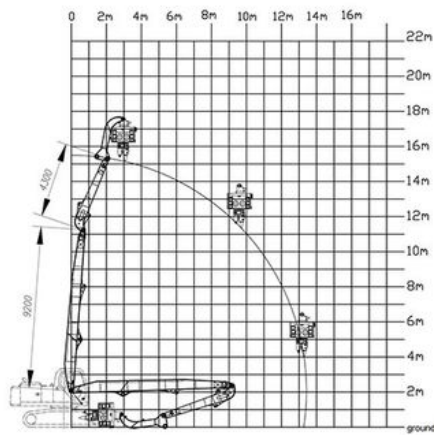


Specifications of one set of excavator pile arm pile boom with hammer are as follow:

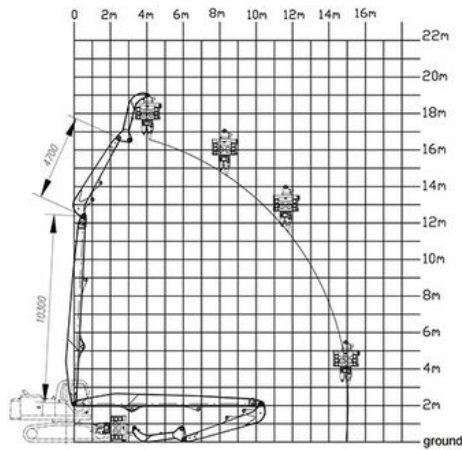
Category	Excavator Model(ton)	Section(m)	Total Length(m)
Boom	20-24T	8	11-12
Arm		3	
Boom	25-28T	8.5	12.5-13
Arm		3.5	
Boom	30-38T	9.7	13.5
Arm		3.8	
Boom	36-39T	10.5	15
Arm		4.5	
Boom	40-47	9.8	13-14.2
Arm		4	
Boom	40-50	11	15-15.8
Arm		4.8	
Boom	45-52	11.5	16.5-16.8
Arm		5.3	
Boom	47-52	12.2	18-19
Arm		6	
Boom	49-52	14	21-22
Arm		7	
Boom	60-70	14	21-22
Arm		7	
Boom	65-85	15.2	24m
Arm		8.8	

Model drawing of 13.5m and 15m Pile Arm Pile Boom are as follow:

13.5 Pile Arm Pile Boom



15m Pile Arm Pile Boom



Production Details of one set of excavator pile arm pile boom excavator pile driving arm

* Proceeded by high precision machines: ensure machining precision of no less than 0.05mm



Large floor-standing
double-sided boring
machine
Higher accuracy

* Steel plates is cut by CNC plasma machine which ensures that the plates are with less deformation.

Panel is cut by CNC
plasma machine with
less deformation



* Every plate is fully beveling before welding which ensure that the strength of welding.
Ensure the depth of penetration and the quality of welds



Beveling Machine
Every board will be beveled before being welded which enhances the weld bead

Some details of one set of excavator pile driving arm pile driving arm pile arm pile boom:



PILE DRIVING BOOM
ZHONGSE MACHINERY



Overall Quality

- * Q355B Material
- * Centralized lubrication system

Boom Base

- * Graphite alloy copper sleeve
- * The boom seat sleeve adopts all in one molding process

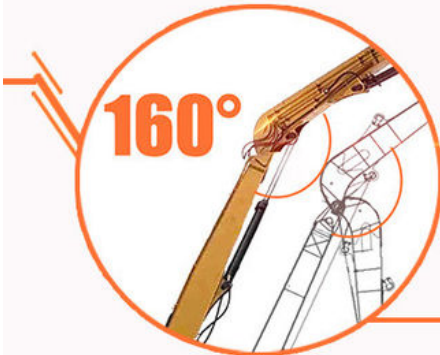
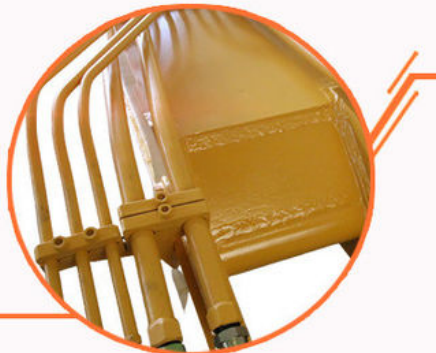


Precision Pipe

- * Seamless precision steel pipe
- * Hydraulic pipelines section design, convenient for later maintenance

Welding process

- * Four layers five passes welding
- * High-quality Ningbo connectors



Open Angle

- * The angle between boom and arm can reach 160°
- * Comparing with the same length pile driving arm, ours can pile higher.

Robust Construction: Built from high-grade materials, our pile arm is designed to withstand the rigorous stresses associated with heavy lifting and driving piles. Its reinforced design provides enhanced durability, ensuring it can handle the toughest jobs.

Superior Load Capacity: The pile arm is engineered to support significant loads while maintaining structural integrity. This capability allows for efficient operation, reducing the risk of equipment failure and downtime on the job site.

Precision Engineering: Each pile boom is manufactured with meticulous attention to detail, ensuring optimal alignment and functionality. This precision reduces wear and tear, prolonging the lifespan of both the pile arm and the excavator.

Versatile Applications: Our pile arm is compatible with a range of excavators, making it a versatile choice for various projects. Whether you're working on residential foundations, commercial buildings, or infrastructure projects, this pile boom is designed to meet your needs.

Easy Installation: Designed for seamless integration with existing excavators, our pile arm allows for quick installation and setup, minimizing downtime and maximizing productivity.

Certifications we have:

- * More professional *Experienced *8 Years+

4. Certifications



Contact us:
Big Discount Is Awaiting!



Sales Manager

Manufacturer of Excavator Arm and Boom

Whatsapp: +86 13822325403

Email: aria@excavatorboomarm.com
13822325403@163.com

Web: www.excavatorlongarm.com



Jiangmen Kaiping Zhonghe Machinery Manufacturing Co., Ltd

+86 13822325403

aria@excavatorboomarm.com

excavatorlongarm.com

9 Huancui West Road, Cuishanhu New Area, Kaiping City, Guangdong Province, China