



Excavators Boom Dipper Arm Excavator Long Reach Stick Boom And Arm Telescopic Boom for Excavator

Our Product Introduction

for more products please visit us on excavatorlongarm.com

Basic Information

- Place of Origin: Guangdong Province, China
- Brand Name: Kaiping Zhonghe Machinery
- Certification: Patents, ISO, Standard
- Model Number: Telescopic Arm Telescopic Boom Arm
- Minimum Order Quantity: 1 set / piece
- Price: USD 199.00-USD8999.00
- Packaging Details: bubble / wooden cases
- Delivery Time: 5-25/works
- Payment Terms: T/T, L/C
- Supply Ability: 5 sets per week



Product Specification

- Color: According To Clients' Requirement
- Spare Parts: High Quality
- Vibration: Vibration Proof
- MOQ: 1 Piece / Set
- Suitable Excavator(ton): 6 Ton - 66 Ton
- Digging Depth(m): 12m 14m 16m 18m 20m
- Warranty: 6 Months
- OEM / ODM: YES
- High Efficiency: YES
- Brand: Zhonghe Machinery
- Quality Guaranteed: Yes
- Digging Depth(m): 14m 16m 18m 20m 25m
- Customized: YES
- Painting: Three Layers



More Images



Product Description

14m 16m 20m Excavator Telescopic Arm with Standard Bucket LG700 / HG785

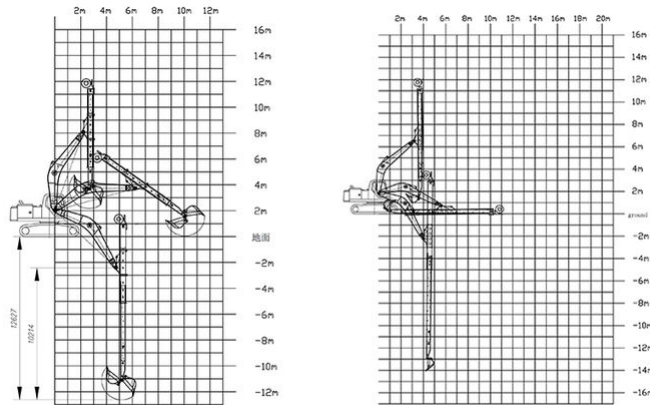
Introduction of one set of telescopic arm excavator:

Material	LG700 / HG785 / Q690D
Cylinder	2 pcs, High quality cylinders
Bucket--Standard type	0.5cbm 0.8cbm 1cbm 1.5cbm 2cbm
Linkage	High quality type
Pins	Hot treatment and then chrome plating

One set of telescopic arm excavator include: One telescopic arm, one bucket, one bucket cylinder, one set linkage, pins.

Our Product Introduction

for more products please visit us on excavatorlongarm.com

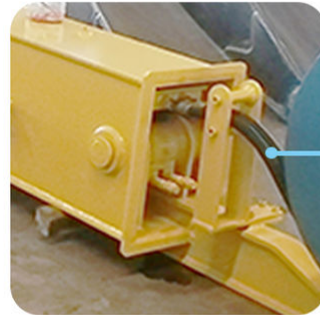


2. Key Features of one set of excavator telescopic boom telescopic arm:



Enlarged spring piece

- ✓ High Effective
- ✓ Not prone to failure



Four-layer steel wire high pressure hose

- ✓ More durable



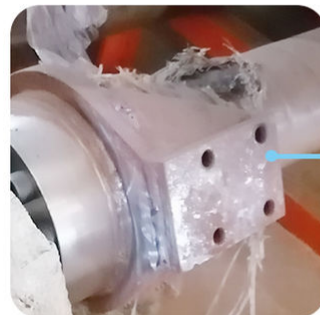
The front part is curved

- ✓ Enlarge the digging force
- ✓ Digging effective is increased.



The whole plate is inserted

- ✓ Durable
- ✓ Longer life-span



Add two blocks on cylinder head

- ✓ Reduce vibration



Double oil seal design

- ✓ Avoid oil leakage

High-Strength Material:

Constructed from Q690 and LG700 high-strength steel, ensuring exceptional durability and resistance to deformation under heavy loads.

Extended Reach:

The innovative telescopic design allows for significant extension, providing increased reach for deep digging and versatile positioning on various job sites.

Lightweight Construction:

Engineered for a reduced weight without sacrificing strength, enhancing fuel efficiency and improving overall maneuverability of the excavator.

Superior Load Capacity:

Designed to handle substantial loads effectively, making it suitable for a wide range of applications including digging, lifting, and material handling.

Corrosion Resistance:

Features a protective coating that guards against corrosion, extending the lifespan of the arm and minimizing maintenance needs.

Easy Compatibility:

Compatible with various excavator models, allowing for quick installation and removal to maximize operational efficiency.

Precision Engineering:

Each unit undergoes rigorous testing to meet high-quality standards, ensuring smooth operation and reducing wear on the excavator.

3. Performance Benefits of one set of excavator long reach telescopic boom:**Enhanced Reach and Versatility:**

The long reach design allows the excavator to extend further than standard booms, enabling access to hard-to-reach areas. This versatility of excavator telescopic arm is ideal for projects such as deep excavation, trenching, and loading operations.

Increased Efficiency:

With a longer boom, operators can accomplish tasks more quickly, reducing the number of repositioning required. This leads to improved cycle times and overall productivity on the job site.

Improved Digging Depth:

The telescopic feature allows for greater digging depth, making it suitable for applications like foundation digging, pond excavation, and utility installation, where deep access is necessary.

**4. Call to Action**

Welcome to contact us for a big discount!



Sales Manager

Manufacturer of Excavator Arm and Boom

Whatsapp: +86 13822325403

Email: aria@excavatorboomarm.com
13822325403@163.com

Web: www.excavatorlongarm.com

**Welcome Perks Await.**

Zhonghe Machinery is a big Manufacturer of Excavator telescopic arm

Any interest,

Welcome to contact Aria--sales manager of Zhonghe Machinery.

Whatsapp: wa.me/+8613822325403

Email: aria@excavatorboomarm.com

13822325403@163.com

Website link: www.excavatorlongarm.com



Jiangmen Kaiping Zhonghe Machinery Manufacturing Co., Ltd



+86 13822325403



aria@excavatorboomarm.com



excavatorlongarm.com

9 Huancai West Road, Cuishanhu New Area, Kaiping City, Guangdong Province, China

