



Telescopic Arm for Sale Excavator Dipper Arm Telescopic Arm for Excavator Telescopic Boom Telescopic Arm

Our Product Introduction

for more products please visit us on excavatorlongarm.com

Basic Information

- Place of Origin: Guangdong Province, China
- Brand Name: Kaiping Zhonghe Machinery
- Certification: Patents, ISO, Standard
- Model Number: Telescopic Arm Excavator 02
- Minimum Order Quantity: 1 set / piece
- Price: USD 199.00-USD18999.00
- Packaging Details: bubble / wooden cases
- Delivery Time: 5-25/works
- Payment Terms: T/T, L/C
- Supply Ability: 5 sets per week



Product Specification

- Full Test: Yes
- High Efficiency: YES
- Color: Accoring To Clients' Requirement
- Material: LG700 / Q690D
- OEM / ODM: YES
- Customized: YES
- MOQ: 1 Piece / Set
- Digging Depth(m): 12m 14m 16m 18m 20m
- Suitable Excavator(ton): 6 Ton - 66 Ton
- Brand: Zhonghe Machinery



More Images



Product Description

Overview of one set of telescopic arm for excavator:

The telescopic arm for excavators is a cutting-edge attachment designed for enhanced reach, versatility, and performance in various excavation applications. Engineered from high-grade materials, this attachment offers the perfect balance of strength and weight, making it an essential tool for construction.

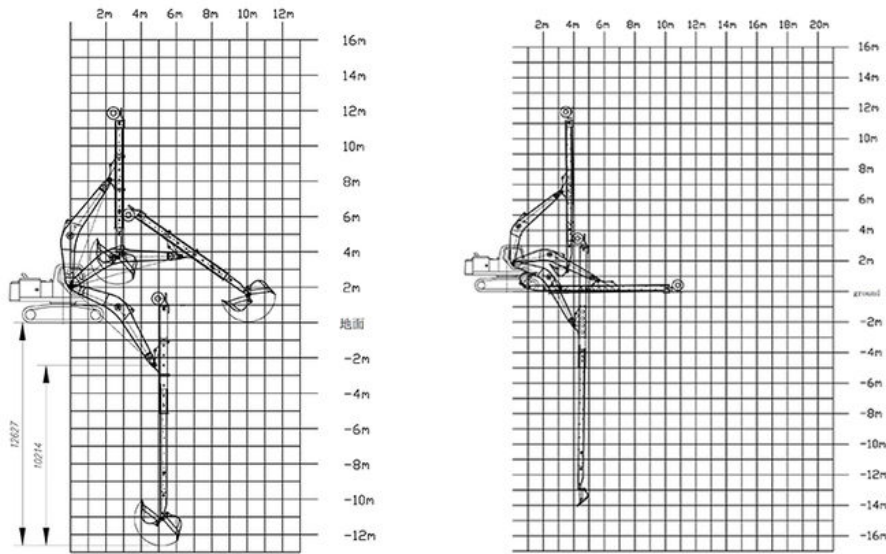


A very versatility tool in digging sand soil silt dirt:



Specifications of one set of excavator telescopic boom telescopic arm:

Excavator Model(ton)	Bucket Capacity(cbm)	Bucket Cylinder	Digging Depth(m)
6T	0.2	6T	6
10-12T	0.2	6T	10
20-27T	0.4	20T	12
30-36T	1	30T	12
20-27T	0.4-0.6	20T	14
24-27T	0.8	30T	14
30-36T	1	35T	14
30-36T	0.8	30T	14
30-36T	1	35T	15
24-28T	0.8	30T	15
24-28T	0.4	20T	16
30-36T	0.8	22T	16
45-50T	1.2	35T	16



Digging depth(m)	10m 12m 14m 16m 20m
------------------	---------------------

Key Features of one set of telescopic arm excavator:

Telescopic boom excavator is famous for its long reach and deeper digging depth:16m 18m 20m 25m

There is one long cylinder inside the telescopic arm tube which can extend and retract.

Material Composition:

Constructed from high-strength Q690 and LG700 steel, excavator telescopic boom provides exceptional durability and resilience. These materials are known for their superior tensile strength, ensuring telescopic arm for excavator can withstand heavy loads and harsh operating conditions.

Extended Reach:

The telescopic design allows for significant extension, enabling operators to reach deeper and further than conventional arms. This feature of excavator teledipper is particularly beneficial in tight spaces or when working on large excavation sites, allowing for greater flexibility in positioning the excavator.

Lightweight Design:

The use of advanced materials contributes to a lighter overall weight without compromising strength. This reduction in weight enhances the excavator's fuel efficiency and improves maneuverability, making it easier to transport and operate. Excavator dipper arm with standard bucket is lighter but stronger. The material we use is LG700 / HG785/ Q690D.

Enhanced Load Capacity:

With a robust construction, the telescopic arm for excavator is capable of handling substantial loads, making it suitable for a variety of tasks, from digging and lifting to material handling. The design optimizes load distribution, ensuring stability throughout the operation.

Corrosion Resistance:

The telescopic boom excavator is treated with a corrosion-resistant coating, providing added protection against the elements. This feature prolongs the lifespan of the arm, reducing the need for frequent maintenance and repairs.

Easy Installation:

Designed for compatibility with a range of excavator models, excavator long reach arm long reach boom can be easily installed and removed. This versatility allows operators to switch attachments quickly, maximizing productivity on the job site.

Precision Engineering:

Each arm undergoes rigorous testing and quality control to ensure it meets industry standards. The precision engineering guarantees smooth operation, reducing wear on the excavator and enhancing overall performance.



Telescopic Arm



The front end is designed to be curved, greater digging force

Bearing part with multi-layer reinforced





The pivot end is reinforced with multiple layers to withstand greater excavation forces

The exposed bucket cylinder can be replaced without disassembling arm, which is convenient for maintenance



The reel adopts enlarged spring piece

Applications of one set of excavator long reach telescopic boom:

Telescopic arm telescopic boom arm is ideal for various applications, including:
Deep excavation projects



Conclusion of one set of excavator dipper arm with standard bucket:

Investing in our telescopic arm for excavators means enhancing your operational capabilities while ensuring durability and efficiency. With its lightweight design, extended reach, and high load capacity, this attachment is an invaluable asset for any heavy-duty excavation project. Experience the difference in performance and reliability with our state-of-the-art telescopic arm for excavator.



Sales Manager

Manufacturer of Excavator Arm and Boom

Whatsapp: +86 13822325403

Email: aria@excavatorboomarm.com
13822325403@163.com

Web: www.excavatorlongarm.com



Jiangmen Kaiping Zhonghe Machinery Manufacturing Co., Ltd



+86 13822325403



aria@excavatorboomarm.com



excavatorlongarm.com

9 Huancui West Road, Cuishanhu New Area, Kaiping City, Guangdong Province, China