



Customized Long Reach Excavator Long Reach Boom And Telescopic Arm

Our Product Introduction

for more products please visit us on excavatorlongarm.com

Basic Information

- Place of Origin: Guangdong Province, China
- Brand Name: Kaiping Zhonghe Machinery
- Certification: Patents, ISO, Standard
- Model Number: Excavators Boom Dipper Arm
- Minimum Order Quantity: 1 set / piece
- Price: USD 199.00-USD8999.00
- Packaging Details: bubble / wooden cases
- Delivery Time: 5-25/works
- Payment Terms: T/T, L/C
- Supply Ability: 5 sets per week



Product Specification

- High Efficiency: YES
- Quality Guaranteed: Yes
- Color: Accoring To Clients' Requirement
- Spare Parts: High Quality
- MOQ: 1 Piece / Set
- OEM / ODM: YES
- Suitable Excavator(ton): 6 Ton - 66 Ton
- Brand: Zhonghe Machinery
- Digging Depth(m): 12m 14m 16m 18m 20m
- Warranty: 6 Months
- Digging Depth(m): 14m 16m 18m 20m 25m
- Customized: YES

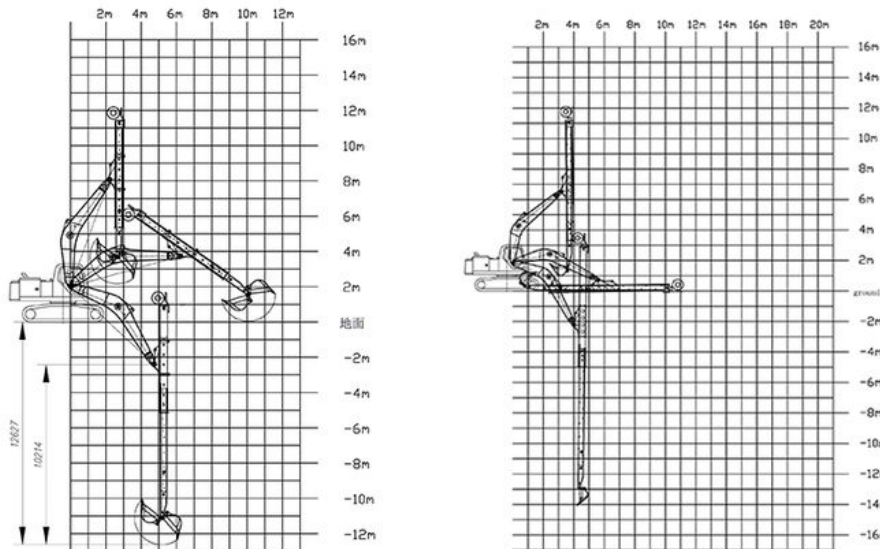


More Images



Product Description

1. Sales amount of telescopic arm for excavator annually: **200 sets**, more than **100 clients**
2. Introduction of one set of excavator telescopic boom:



The **Two-Section Telescopic Arm for Excavator** is a cutting-edge attachment designed to enhance the versatility and performance of excavators in various applications. This innovative telescopic arm for excavator features an extendable design that allows for greater reach and flexibility, making it ideal for tasks that require both depth and precision, such as digging, lifting, and material handling.

Engineered with high-strength materials, the excavator teledipper is built to endure the rigors of demanding work environments. Its robust construction ensures durability and longevity, minimizing maintenance needs and downtime. The excavator telescopic arm's extendable sections can be adjusted effortlessly, allowing operators to tackle a wider range of projects without the need to reposition the excavator.

3. Key Features of one set of excavator telescopic boom telescopic arm:

1. Enhanced Reach and Flexibility

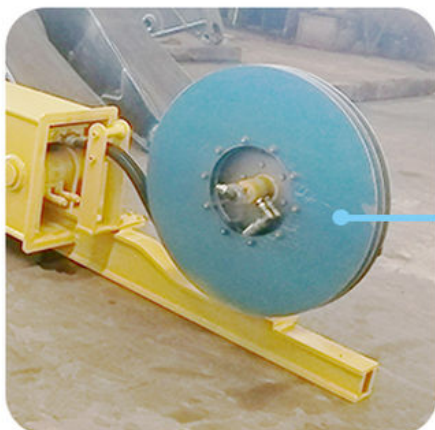
The innovative telescopic boom design allows for impressive extension, enabling operators to reach greater depths and distances compared to traditional fixed arms. This increased reach is crucial for tasks such as deep trench digging, accessing difficult-to-reach locations, and maneuvering over obstacles. As a result, the arm is highly versatile and suitable for a variety of applications.

2. Advanced Hydraulic System

Featuring a cutting-edge hydraulic system, the telescopic arm facilitates smooth and precise extension and retraction. This system enables quick adjustments in both length and angle, allowing operators to execute tasks with improved control and efficiency. Engineered for heavy-duty operations, the hydraulic performance ensures reliability even in the most demanding environments.

3. Robust Construction with Safety Features

Built from high-strength materials, the telescopic boom is designed to endure the challenges of heavy use. It includes reinforced joints and a strong structural framework that reduces wear and tear. Furthermore, integrated safety features such as overload protection and automatic locking mechanisms enhance operational safety, giving operators confidence while tackling complex tasks.



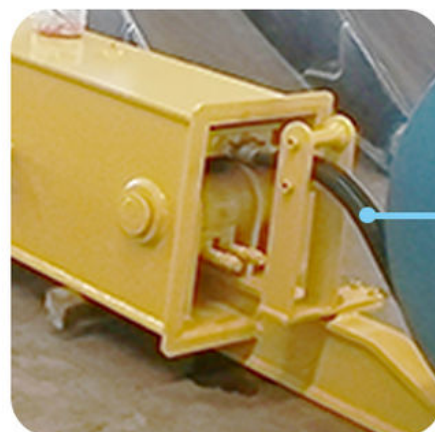
Enlarged spring piece



High Effective



Not prone to failure



**Four-layer steel wire
high pressure hose**



More durable



The front part is curved



**Enlarge the digging
force**



**Digging effective
is increased.**



The whole plate is inserted



Durable
Longer life-span



Add two blocks
on cylinder head



Reduce vibration



Double oil seal
design



Avoid oil leakage

4. Performance Benefits of one set of excavator boom dipper arm with standard bucket:





5. Call to Action

Welcome to contact us for a big discount!



Sales Manager

Manufacturer of Excavator Arm and Boom

Whatsapp: +86 13822325403

Email: aria@excavatorboomarm.com
13822325403@163.com

Web: www.excavatorlongarm.com



Welcome Perks Await.

Zhonghe Machinery is a big Manufacturer of Excavator telescopic arm

Any interest,

Welcome to contact Aria--sales manager of Zhonghe Machinery.

Whatsapp: wa.me/+8613822325403

Email: aria@excavatorboomarm.com

13822325403@163.com

Website link: www.excavatorlongarm.com



Jiangmen Kaiping Zhonghe Machinery Manufacturing Co., Ltd



+86 13822325403



aria@excavatorboomarm.com



excavatorlongarm.com

9 Huancui West Road, Cuishanhu New Area, Kaiping City, Guangdong Province, China