



## 14m Telescopic Excavator Telescopic Arm for Excavator Hydraulic Telescoping Excavator

Our Product Introduction

for more products please visit us on excavatorlongarm.com

### Basic Information

- Place of Origin: Guangdong Province, China
- Brand Name: Kaiping Zhonghe Machinery Manufacturing Co. Ltd
- Certification: CE, Patents, ISO
- Model Number: Telescopic Excavator
- Minimum Order Quantity: 1 set / piece
- Price: USD 199.00-USD13999.00
- Packaging Details: bubble or wooden case / others
- Delivery Time: 5-20 days
- Payment Terms: T/T, L/C or others as you request
- Supply Ability: 5 sets per week



### Product Specification

- Color: Red, Yellow, Blue White Customized
- OEM/ODM: YES
- Warranty: YES, 6 Months, 3 Months
- Digging Depth(m): 10m 12m 14m 16m 18m 20m
- Package: YES, Bubble, Wooden Cases
- Long Reach: YES
- Testings: YES
- Buckets(cbm): 0.5cbm 0.8cbm 1cbm 1.5cbm 2cbm
- After-sales Service: YES, 24Hours Available
- Suitable Excavator (ton): 6ton To 60ton
- High Efficiency: YES
- Premium: YES
- Material: LG700 / HG785 / Q690D
- Suitable Excavator Brands: Hitachi Komatsu Sany Kato Etc



### More Images



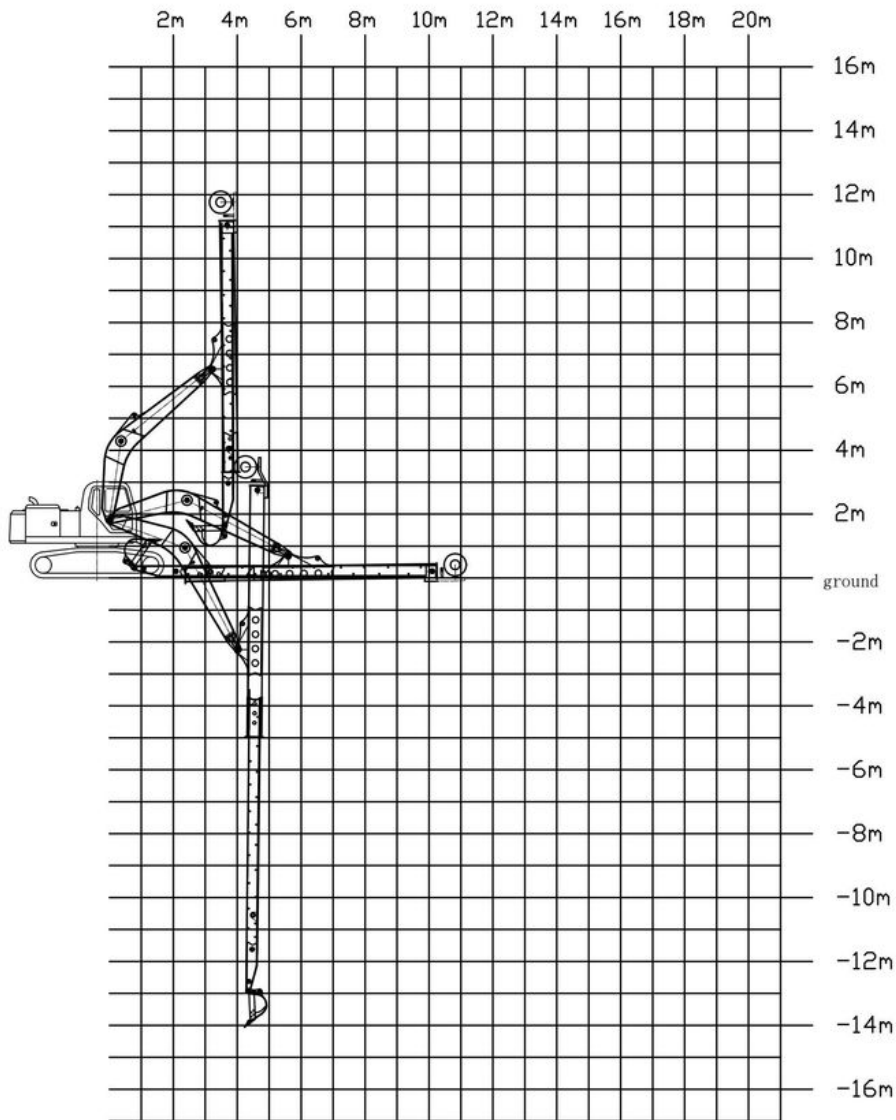
## Product Description

### Introduction of one set of Excavator Telescopic Dipper Arm:

The Excavator Telescopic Dipper Arm represents a significant advancement in excavator technology, designed to enhance versatility and efficiency on job sites. Telescopic arm for excavator allows for greater reach and depth, making it ideal for various applications in construction, mining, and landscaping.

Crafted from high-strength materials, telescopic arm excavator is engineered to withstand the rigors of demanding environments while maintaining optimal performance. Its extendable design enables operators to tackle tasks that require both precision and power, whether it's digging, lifting, or moving materials in tight spaces.

### PC 200--14m two-section telescopic arm



### Telescopic arm Excavator Is Suitable for Various Excavators:

**Excavator Brands:** Sany Hitachi Komatsu Zoomlion Kato Sumitomo

### CHOICE OF LANGUAGE





#### More Excavator Telescopic Arm Details:

##### 1. Robust Construction

Constructed from high-strength steel and reinforced at critical stress points, the dipper arm is designed to withstand heavy loads and harsh working conditions. Its durable design minimizes wear and tear, ensuring a longer service life and reduced maintenance costs.

##### 2. Advanced Hydraulic System

Equipped with a state-of-the-art hydraulic system, the telescopic dipper arm provides seamless extension and retraction. This system enhances control and response time, allowing operators to make precise movements, which is crucial in applications that require delicate handling.

##### 3. Improved Stability

The design of the telescopic dipper arm enhances the stability of the excavator, even when fully extended. This stability is essential for maintaining safety and efficiency during operations, especially in uneven terrain or when lifting heavy materials.







The front end is designed to be curved, greater digging force

Bearing part with multi-layer reinforced





The pivot end is reinforced with multiple layers to withstand greater excavation forces

The exposed bucket cylinder can be replaced without disassembling arm, which is convenient for maintenance



The reel adopts enlarged spring piece

#### Specifications of one set of Excavators Boom Dipper Arm:

Welcome to send your excavator model to us for double check. Suitable length and model drawing of excavators boom dipper arm will be sent soon.

| Excavator Model (ton) | Bucket (cbm) | Bucket Cylinder(ton) | Digging Depth(m) |
|-----------------------|--------------|----------------------|------------------|
| 6T                    | 0.2          | 6T                   | 6                |
| 10-12T                | 0.2          | 6T                   | 10               |
| 20-27T                | 0.4          | 20T                  | 12               |
| 30-36T                | 1            | 30T                  | 12               |
| 20-27T                | 0.4-0.6      | 20T                  | 14               |
| 24-27T                | 0.8          | 30T                  | 14               |
| 30-36T                | 1            | 35T                  | 14               |
| 30-36T                | 0.8          | 30T                  | 14               |
| 30-36T                | 1            | 35T                  | 15               |
| 24-28T                | 0.8          | 30T                  | 15               |
| 24-28T                | 0.4          | 20T                  | 16               |
| 30-36T                | 0.8          | 22T                  | 16               |
| 45-50T                | 1.2          | 35T                  | 16               |

Production details of one set of excavator boom dipper arm with standard bucket

\*Full Tests \* Standard \* Professional \* Experienced

Steel Material of one set of Excavator Long Reach Telescopic Boom-LG700 (lighter and stronger)





**Kaiping Zhonghe Machinery's Team Show:**



**2024 Bauma Exhibition**



**2025 CHANGSHA INTERNATIONAL CONSTRUCTION EQUIPMENT EXHIBITION**



**Call to Action**  
**24 Hours Online**



Sales Manager

## Manufacturer of Excavator Arm and Boom

Whatsapp: +86 13822325403

Email: [aria@excavatorboomarm.com](mailto:aria@excavatorboomarm.com)  
[13822325403@163.com](mailto:13822325403@163.com)

Web: [www.excavatorlongarm.com](http://www.excavatorlongarm.com)



**Zhonghe Machinery is a big Manufacturer of Excavator Long Reach Boom And Telescopic Arm**  
**Any interest,**

Welcome to contact Aria--sales manager of Zhonghe Machinery.

Whatsapp: [wa.me/+8613822325403](https://wa.me/+8613822325403)

Email: [aria@excavatorboomarm.com](mailto:aria@excavatorboomarm.com)

[13822325403@163.com](mailto:13822325403@163.com)

Website link: [www.excavatorlongarm.com](http://www.excavatorlongarm.com)

### Top Picks of Our Excavator Long Arms and Booms:



Two-section Demolition Arm



Pile Arm Pile Boom



Tunnel Arm / Shorten Arm







**Jiangmen Kaiping Zhonghe Machinery Manufacturing Co., Ltd**



+86 13822325403



aria@excavatorboomarm.com



excavatorlongarm.com

9 Huancui West Road, Cuishanhu New Area, Kaiping City, Guangdong Province, China