



30m 32m Telescopic Arm for Sale with 1.5cbm Clamshell Bucket

Our Product Introduction

for more products please visit us on excavatorlongarm.com

Basic Information

- Place of Origin: Jiangmen City, Guangdong Province, China
- Brand Name: Kaiping Zhonghe Machinery Manufacturing Co. Ltd
- Certification: CE, Patent, ISO
- Model Number: Telescopic Arm With Clamshell Bucket 007
- Minimum Order Quantity: 1 set / piece
- Price: USD 199.00-USD14999.00
- Packaging Details: Bubble / wooden cases/ others
- Delivery Time: 6-35/works
- Payment Terms: T/T, L/C
- Supply Ability: 5 sets per week



Product Specification

- Wire Rope: Premium
- Suitable Excavator Brand: Various Excavator Brand: Sany Hitachi Komatsu Zoomlion Etc
- Tests: Yes
- Color: Customized, Red, Yellow, White
- Warranty: Yes, 6 Months For The Arm And Cylinders, 3 Months For The Bucket
- Key Word: Excavators Boom Dipper Arm
- After-sales Service: YES
- Digging Depth(m): 18m 20m 25m 30m 32m 35m
- Material: BS900E
- Clamshell Bucket(cbm): 1cbm 1.5cbm 2cbm 3cbm



More Images



Product Description

Introduction of one set of Excavator Long Reach Telescopic Boom Long Reach 18m 20m 25m 30m 32m 35m

The **Excavator Long Reach Telescopic Boom** is designed to enhance the versatility and capability of excavators in various applications. With reach options of 18m, 20m, 25m, 30m, 32m, and 35m, this innovative boom allows operators to efficiently tackle tasks that require extended reach and depth, such as deep excavation, dredging, and material handling in challenging environments.

Constructed from high-strength materials, this telescopic boom is engineered for durability and reliability, ensuring optimal performance even under demanding conditions. Its hydraulic actuation system facilitates smooth and precise movements, allowing for greater control and efficiency during operation.

This long reach boom not only increases the operating range of excavators but also enhances productivity by minimizing the need for repositioning the machine. Whether in construction, the Excavator Long Reach Telescopic Boom is an indispensable tool for maximizing efficiency and effectiveness in heavy-duty tasks.



Suitable excavator brands for one set of telescopic arm excavator:

CHOICE OF LANGUAGE



KOMATSU **CAT** **HITACHI** **VOLVO** **SUMITOMO**

KOBELCO **DOOSAN** **CASE** **KATO** **HYUNDAI**

JCB **LIEBHERR** **ATLAS** **TEREX** **Kubota** **YANMAR** **TAKEUCHI** **IHISCE**

SANY **SDLG** **山东临工** **STRONG** **JCM** **SHANTUI** **福田雷沃重工** **LOVOL** **厦工** **XGMA** **LIUGONG** **柳工**

JOHN DEERE **ZOOMLION** **XCMG** **Lonking** **龙工** **SUNWARD** **山河智能**

Key Features of the Excavator Boom Dipper Arm

Teledipper Arm for Excavator

The extendable teledipper arm significantly improves both reach and digging depth, achieving maximum depths of 25m, 30m, 32m, or 35m through its clamshell telescopic design. It incorporates hydraulic actuation for smooth and efficient operation.

Clamshell Bucket for Excavator Teledipper

Featuring dual jaws, the clamshell bucket excels in gripping and lifting capabilities. It is available in various sizes, including 0.5m³, 1m³, 1.5m³, 2m³, and 3m³, making it suitable for handling a diverse range of materials, such as soil, gravel, and debris.

Control System for Telescopic Arm with Clamshell Bucket

The state-of-the-art hydraulic control system guarantees precise movements, enhanced by an intuitive operator interface that ensures ease of use.



Four pulley design

There are two sliding wheels on the top and two on the bottom, which separate the high-pressure hose and the wire rope to reduce mutual wear. Less wear can extend the service life.



Adopt 30mm main rope

We use thicker wire ropes, which can withstand greater tension, are not easy to break, and withstand greater pressure. The wire ropes are highly wear-resistant and have a long service life.



26mm auxiliary wire rope

Here is the auxiliary wire rope, which is used to make the telescopic arm retractable when it is extended horizontally.



Ningbo connector

It is made of metal and has high compression resistance and expansion capacity. It is easy to load and unload, and can be loaded and unloaded freely.



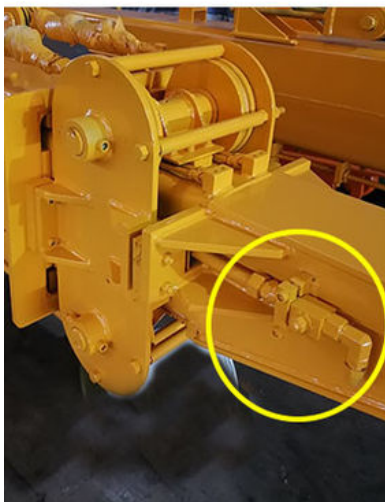
High Quality----Nylon Sliders

Siding block, it is nylon material, it can reduce grinding. Our sliding wheel is POM Material, with high mechanical strength and rigidity.



lubrication concentrate system

Many holes, many holes on the top and at the side, it is easy and convenient for the operator to refill the lubrication oil, they all concentrate on the front of arm.



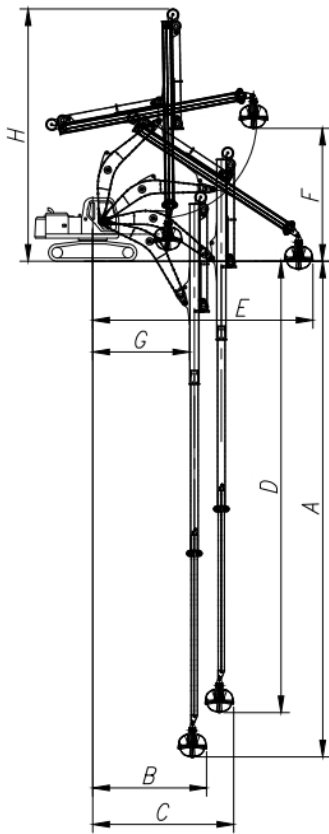
The front head of excavator telescopic arm is with valves which can avoid oil leakage when clients change the excavator attachments. Its more convenient and high effective.

3. Technical Specifications of one set of telescopic boom excavator

Digging Depth(m)	Excavator Model (ton)	Bucket Capacity(cbm)
10	10-15T	0.2
12		0.2
12	20-25T	0.6
14		0.4
16		0.4
18		0.4
20	26-28	0.6
20-22	30-33T	1.5
	35-38T	
	30-33T	
25	35-38T	2.2
	40-50T	
	36-50T	
	40-50T	
26-30	36-50T	1.5
		1.5
		2
		2
		2.2
		2.2
	40-50T	2.2
31-32	40-50T	2.2
		2.5

* Welcome to send your excavator model to us. Suitable length of one set of telescopic arm for excavator will be sent soon.

Technical specification of one set of 30m excavator clamshell telescopic boom are as follow:



A: Maximum vertical digging
 depth: 30000mm
 B: Maximum vertical excavation
 radius: 7095mm
 C: Maximum vertical excavation working
 radius: 8801mm
 D: Maximum vertical digging
 depth: 27311mm
 E: Maximum vertical excavation
 radius: 13586mm
 F: Maximum soil unloading height: 8044mm
 G: Minimum turning radius: 6150mm
 H: Overall machine height at minimum
 turning radius: 15287mm

More shows of our **Telescopic Arm With Clamshell Bucket:**





Material Used for the Excavator Clamshell Telescopic Arm

High-Quality Steel: BS900E — Lighter and Stronger

High Strength:

BS900E is renowned for its outstanding tensile strength, ensuring the structural integrity required to support heavy loads and operate under demanding conditions.

Durability:

This material offers exceptional resistance to wear and fatigue, providing a longer lifespan for the telescopic arm, even with continuous use.

Weldability:

Designed for easy welding, BS900E facilitates efficient fabrication and repairs, which is essential for maintaining the telescopic arm's integrity.

Impact Resistance:

BS900E can endure sudden impacts and shocks, making it well-suited for the rigorous tasks typically performed by excavators.

Corrosion Resistance:

Often treated to resist corrosion, BS900E is ideal for equipment exposed to various environmental conditions, thereby extending the arm's service life.

Production Details of Three-section telescopic arm

Premium Material---**BS900E** lighter and stronger

The materials: steel, cylinders, etc are all stored well and keep away from moisture and corrosion



*** High quality wire rope of excavator teledipper for telescopic arm for excavator:**



*** High quality of Telescopic Arm for Excavator Telescopic Boom:**



- * Durable Construction**
- * Precision Engineering**
- * Advanced Sealing Technology**
- * Corrosion Resistance**
- * Smooth Internal Surface**

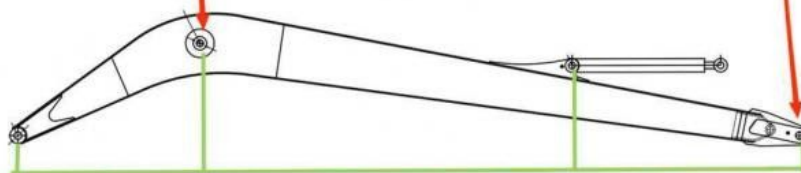
Production Details of the Excavator Clamshell Telescopic Boom

High Precision Machining: Our excavator telescopic arm is manufactured using a large floor-standing double-sided boring machine, ensuring machining precision of no less than 0.05mm.

Double-sided boring lathe



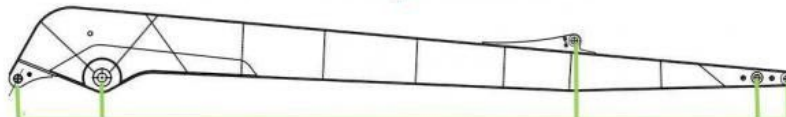
After the excavator boom and arm are assembled, the pins on the boom are drilled to ensure that the pins on the boom are parallel to each other and the cross section of the pin hole is perpendicular to the pin. The double-sided boring machine of the boom makes the hole position more accurate and the quality higher.



Make sure the cross section of the pin hole is perpendicular to the shaft.



Make sure the axis is parallel to the axis



Make sure the cross section of the pin hole is perpendicular to the shaft



Make sure the axis is parallel to the axis

Every Plate of telescopic arm for excavator Fully Beveled Before Welding

Our (mechanical beveling)



VS

Other factories (manual bevel)



Certifications:

* More than 8 years+ experienced *Professional technicians team * Experienced staffs

4. Certifications



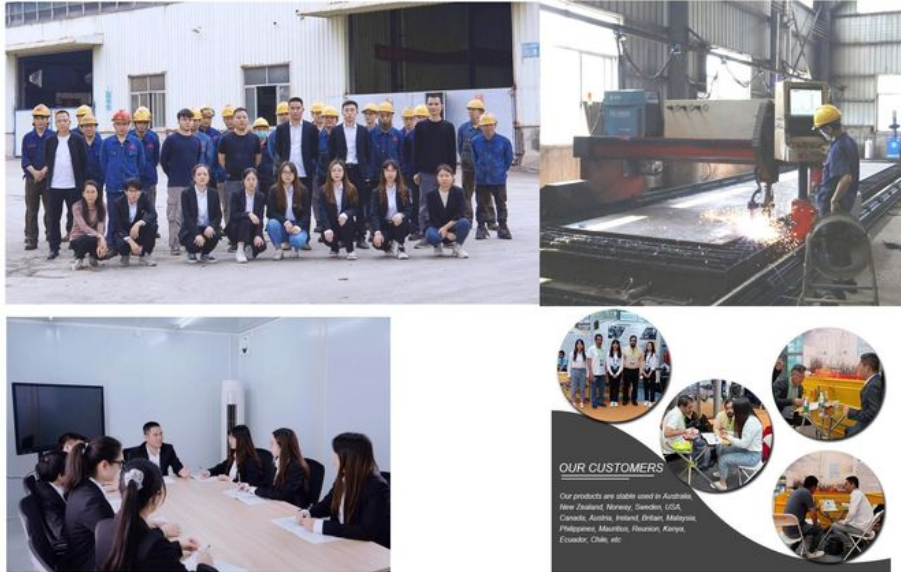
2024 Bauma Exhibition



2025 CHANGSHA INTERNATIONAL CONSTRUCTION EQUIPMENT EXHIBITION



Introduction of Kaiping Zhonghe Machinery



Any interest, feel free to contact us:



Sales Manager

Manufacturer of Excavator Arm and Boom

Whatsapp: +86 13822325403

Email: aria@excavatorboomarm.com
13822325403@163.com

Web: www.excavatorlongarm.com



Welcome to contact Aria--sales manager of Zhonghe Machinery.

Whatsapp: wa.me/+8613822325403

Email: aria@excavatorboomarm.com
13822325403@163.com

Website link: www.excavatorlongarm.com



Jiangmen Kaiping Zhonghe Machinery Manufacturing Co., Ltd



+86 13822325403



aria@excavatorboomarm.com



excavatorlongarm.com

9 Huancui West Road, Cuishanhu New Area, Kaiping City, Guangdong Province, China