



## Telescopic Arm for Sale with 1.5cbm Clamshell Bucket 30m 32m

Our Product Introduction

for more products please visit us on excavatorlongarm.com

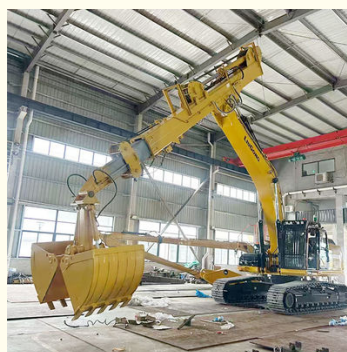
### Basic Information

- Place of Origin: Jiangmen City, Guangdong Province, China
- Brand Name: Kaiping Zhonghe Machinery Manufacturing Co. Ltd
- Certification: CE, Patent, ISO
- Model Number: Excavator Long Reach Stick Boom And Arm
- Minimum Order Quantity: 1 set / piece
- Price: USD 199.00-USD13999.00
- Packaging Details: Bubble / wooden cases/ others
- Delivery Time: 6-35/works
- Payment Terms: T/T, L/C
- Supply Ability: 5 sets per week



### Product Specification

- Key Word: Excavator Teledipper
- Wire Rope: Premium
- Suitable Excavator Brand: Various Excavator Brand: Sany Hitachi Komatsu Zoomlion Etc
- After-sales Service: YES
- Digging Depth(m): 18m 20m 25m 30m 32m 35m
- Warranty: Yes, 6 Months For The Arm And Cylinders
- Color: Customized
- Clamshell Bucket(cbm): 1.5cbm 2cbm 3cbm
- Material: BS900E
- Tests: YES



### More Images



### Product Description

#### 1. Product Overview of excavator telescopic boom:

**Name of the product:** excavator telescopic boom

**Suitable Excavator Brand for one set of telescopic dipper for excavator:** Kato, Hitachi, Komatsu, Sany, Sumitomo, Zoomlion, etc

**Category:** Construction Equipment

**Applications of one set of clamshell telescopic arm:** excavation, material handling, and construction.



## 2. Key Features of Excavators Boom Dipper Arm:

### Teledipper Arm for Excavator

The extendable arm enhances reach and depth capabilities, allowing for a maximum digging depth of 25m, 30m, 32m, or 35m with a clamshell telescopic design. It features hydraulic actuation for smooth and efficient operation.

### Clamshell Bucket for Excavator Teledipper

Equipped with dual jaws, the clamshell bucket provides effective gripping and lifting. It comes in various sizes, including 0.5m³, 1m³, 1.5m³, 2m³, and 3m³, making it suitable for a wide range of materials such as soil, gravel, and debris.

### Control System for Telescopic Arm with Clamshell Bucket

The advanced hydraulic control system ensures precise movements, complemented by an operator-friendly interface for ease of use.



#### Four pulley design

There are two sliding wheels on the top and two on the bottom, which separate the high-pressure hose and the wire rope to reduce mutual wear. Less wear can extend the service life.

#### Adopt 30mm main rope

We use thicker wire ropes, which can withstand greater tension, are not easy to break, and withstand greater pressure. The wire ropes are highly wear-resistant and have a long service life.

#### 26mm auxiliary wire rope

Here is the auxiliary wire rope, which is used to make the telescopic arm retractable when it is extended horizontally.



#### Ningbo connector

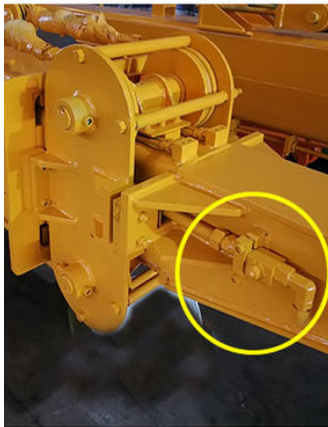
It is made of metal and has high compression resistance and expansion capacity. It is easy to load and unload, and can be loaded and unloaded freely.

#### High Quality----Nylon Sliders

Siding block, it is nylon material, it can reduce grinding. Our sliding wheel is POM Material, with high mechanical strength and rigidity.

#### lubrication concentrate system

Many holes, many holes on the top and at the side, it is easy and convenient for the operator to refill the lubrication oil, they all concentrate on the front of arm.



The front head of excavator telescopic arm is with valves which can avoid oil leakage when clients change the excavator attachments. Its more convenient and high effective.



The clamshell bucket has **two cylinders**---less failure rate

Material we use--Shaogang Q355B--with better welding performance

Premium welding  
Not easy cracking  
Longer life-span

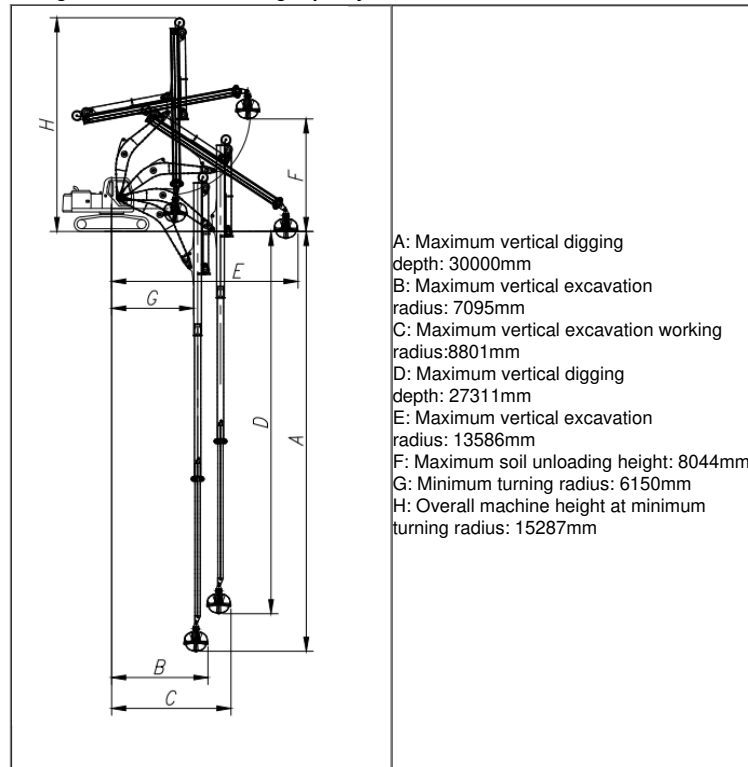
### 3. Technical Specifications of one set of telescopic boom excavator

\* Welcome to send your excavator model to us. Suitable length of one set of telescopic arm for excavator will be sent soon.

Digging Depth(m)	Excavator Model (ton)	Bucket Capacity (cbm)
10	10-15T	0.2
12		0.2
12	20-25T	0.6
14		0.4
16		0.4
18		0.4
20		0.6
20-22	30-33T	1.5
	35-38T	
25	30-33T	2.2
	35-38T	
	35-38T	
	40-50T	
26-30	36-50T	1.5
		1.5
		2
		2
		2.2
	40-50T	2.2
		2.2
31-32	40-50T	2.2
		2.5



Technical specification of one set of 30m telescopic arm for excavator are as follow:  
 \* Long reach \*Professional \*Big capacity



More shows of our Telescopic arm for sale:





**Material we used on the excavator clamshell telescopic arm:**

\* High quality steel material: **BS900E**, lighter and stronger

**High Strength:**

BS900E is known for its excellent tensile strength, providing the structural integrity needed to handle heavy loads and demanding conditions.

**Durability:**

The material exhibits superior resistance to wear and fatigue, ensuring a longer lifespan for the telescopic arm even under continuous use.

**Weldability:**

BS900E is designed for easy welding, allowing for efficient fabrication and repairs, which is crucial for maintaining the integrity of the telescopic arm.

**Impact Resistance:**

This material can withstand sudden impacts and shocks, making it suitable for the rigorous tasks typically performed by excavators.

**Corrosion Resistance:**

BS900E is often treated to resist corrosion, which is essential for equipment exposed to various environmental conditions, extending the arm's service life.

## Production Details of Three-section telescopic arm

Premium Material---**BS900E** lighter and stronger

The materials: steel, cylinders, etc are all stored well and keep away from moisture and corrosion



### \* High quality wire rope of excavator teledipper:

#### **Load-Bearing Capacity:**

Wire rope is essential for supporting the heavy loads that telescopic arms handle during operation. Its strength ensures safety and efficiency in lifting and maneuvering materials.

#### **Flexibility and Maneuverability:**

The design of wire rope allows for better flexibility, enabling the telescopic arm to extend and retract smoothly without compromising structural integrity.

#### **Durability:**

Wire ropes are engineered to withstand wear and tear, making them suitable for harsh working environments. They resist abrasion and fatigue, ensuring a longer lifespan.



### \* High quality of Excavator Long Reach Boom And Telescopic Arm:

Durable Construction  
Precision Engineering  
Advanced Sealing Technology  
Corrosion Resistance  
Smooth Internal Surface



- \* Durable Construction
- \* Precision Engineering
- \* Advanced Sealing Technology
- \* Corrosion Resistance
- \* Smooth Internal Surface

### Production details of one set of excavator clamshell telescopic boom

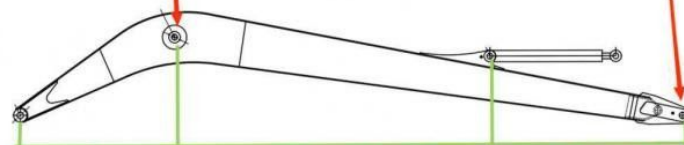
\***High proceeding precision machine:** Our telescopic arm for excavator is proceeded by Large floor-standing double-sided boring machine ensure machining precision of no less than 0.05mm



## Double-sided boring lathe



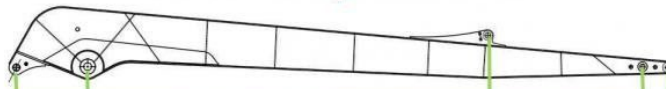
After the excavator boom and arm are assembled, the pins on the boom are drilled to ensure that the pins on the boom are parallel to each other and the cross section of the pin hole is perpendicular to the pin. The double-sided boring machine of the boom makes the hole position more accurate and the quality higher.



Make sure the cross section of the pin hole is perpendicular to the shaft.



Make sure the axis is parallel to the axis



Make sure the cross section of the pin hole is perpendicular to the shaft



Make sure the axis is parallel to the axis

### Every Plate Fully Beveled Before Welding

#### Purpose of Beveling the Long Boom Arm Plate

Beveling the edges of the long boom arm plate is essential for ensuring proper weld penetration. Most industrial welding machines typically achieve a penetration depth of only 3mm. Given that our long arm plate is at least 8mm thick, failing to bevel the edges would hinder effective penetration of the entire joint. This can lead to weak welds and an increased risk of cracking over time.

We utilize mechanical beveling for this process, while many other factories depend on manual beveling, as illustrated in the accompanying figure.

Our (mechanical beveling)



VS

Other factories (manual bevel)



Certifications we have:

\* More than 8 years+ experienced \*Professional technicians team \* Experienced staffs

#### 4. Certifications



2024 Bauma Exhibition

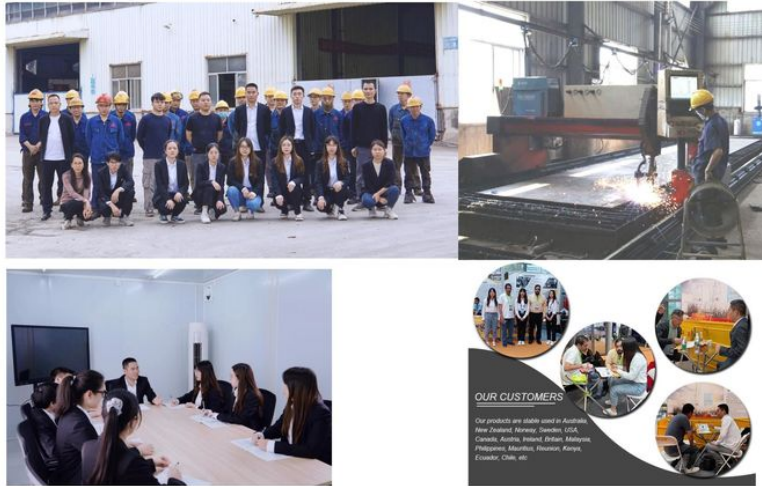


2025 CHANGSHA INTERNATIONAL CONSTRUCTION EQUIPMENT EXHIBITION





## Introduction of Kaiping Zhonghe Machinery



Any interest, feel free to contact us:



**Sales Manager**

**Manufacturer of Excavator Arm and Boom**

Whatsapp: +86 13822325403

Email: [aria@excavatorboomarm.com](mailto:aria@excavatorboomarm.com)  
13822325403@163.com

Web: [www.excavatorlongarm.com](http://www.excavatorlongarm.com)



Welcome to contact Aria--sales manager of Zhonghe Machinery.

Whatsapp: [wa.me/+8613822325403](https://wa.me/+8613822325403)

Email: [aria@excavatorboomarm.com](mailto:aria@excavatorboomarm.com)  
13822325403@163.com

Website link: [www.excavatorlongarm.com](http://www.excavatorlongarm.com)



**Jiangmen Kaiping Zhonghe Machinery Manufacturing Co., Ltd**



+86 13822325403



[aria@excavatorboomarm.com](mailto:aria@excavatorboomarm.com)



[excavatorlongarm.com](http://excavatorlongarm.com)

9 Huancui West Road, Cuishanhu New Area, Kaiping City, Guangdong Province, China