

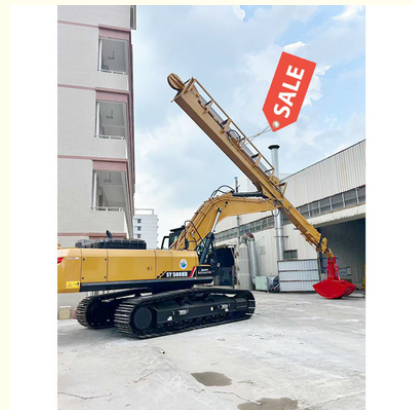
30M Excavator Telescopic Boom Telescopic Arm with 1.5CBM Clamshell Bucket

Our Product Introduction

for more products please visit us on excavatorlongarm.com

Basic Information

- Place of Origin: Guangdong Province, China
- Brand Name: Kaiping Zhonghe Machinery Manufacturing Co. Ltd
- Certification: CE, Patent, ISO
- Model Number: Excavator Teledipper 09
- Minimum Order Quantity: 1 set / piece
- Price: USD 199.00-USD12999.00
- Packaging Details: Bubble / wooden cases/ others
- Delivery Time: 6-35/works
- Payment Terms: T/T, L/C
- Supply Ability: 5 sets per week



Product Specification

- Material: BS900E
- Key Word: Excavator Teledipper
- Wire Rope: Premium
- Clamshell Bucket(cbm): 1.5cbm 2cbm 3cbm
- Color: Customized
- After-sales Service: YES
- Digging Depth(m): 18m 20m 25m 30m 32m 35m
- Warranty: Yes, 6 Months For The Arm And Cylinders



More Images



Product Description

1. Product Overview of Excavator Dipper Arm:

Name: Excavator Teledipper with Clamshell Bucket

Suitable Excavator Brand: Hitachi, Komatsu, Sany, Sumitomo, Zoomlion, etc

Type: Heavy Machinery

Category: Construction Equipment

Applications: Excavation, dredging, material handling, and construction.

2. Key Features of our telescopic dipper arm excavator:

Teledipper Arm for Excavator:

Extendable arm for increased reach and depth. The digging depth of one set of clamshell telescopic arm for excavator can reach 25m 30m 32m 35m.

Hydraulic actuation for smooth operation.

Clamshell Bucket of excavator clamshell telescopic arm:

Dual jaws for efficient gripping and lifting.

Various sizes available (e.g., 0.5m³, 1m³, 1.5m³, 2m³, 3m³).

Suitable for diverse materials: soil, gravel, and debris.

Control System of one set of telescopic arm with clamshell bucket:

Advanced hydraulic control for precise movements.

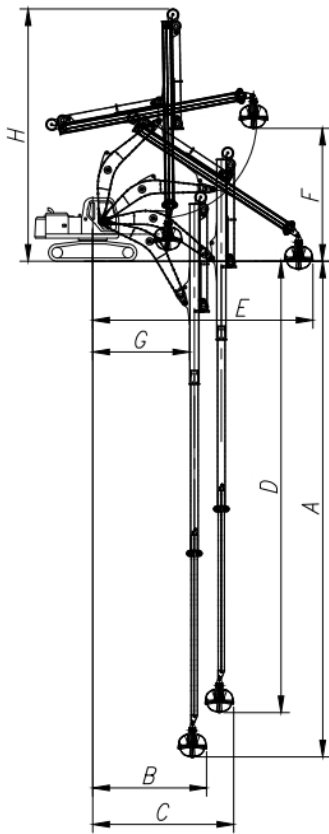
Operator-friendly interface.

3. Technical Specifications of one set of telescopic excavator

* Welcome to send your excavator model to us. Suitable length of one set of telescopic excavator will be sent soon.

Digging Depth(m)	Excavator Model(ton)	Bucket Capacity(cbm)
10	10-15T	0.2
12		0.2
12	20-25T	0.6
14		0.4
16		0.4
18		0.4
20	26-28	0.6
20-22	30-33T	1.5
	35-38T	
25	30-33T	2.2
	35-38T	
	40-50T	
26-30	36-50T	1.5
		1.5
		2
		2
		2.2
		2.2
31-32	40-50T	2.2
		2.5

Technical specification of one set of 30m telescopic dipper for excavator are as follow:



A: Maximum vertical digging depth: 30000mm
 B: Maximum vertical excavation radius: 7095mm
 C: Maximum vertical excavation working radius: 8801mm
 D: Maximum vertical digging depth: 27311mm
 E: Maximum vertical excavation radius: 13586mm
 F: Maximum soil unloading height: 8044mm
 G: Minimum turning radius: 6150mm
 H: Overall machine height at minimum turning radius: 15287mm

More shows of our Excavator Long Reach Stick Boom And Arm:

The telescopic arm of the excavator is a highly engineered component designed to enhance the machine's reach and versatility.



Structure of hydraulic telescoping excavator boom: The arm consists of multiple sections that can extend and retract smoothly, allowing for precise control over the working length. Each section is reinforced for durability, ensuring stability during operation.

Hydraulic System of one set of Excavator Long Reach Boom And Telescopic Arm The arm is equipped with a hydraulic actuation system that provides seamless extension and retraction. This system ensures that the operator can adjust the arm's length effortlessly, adapting to various excavation depths and job site conditions.

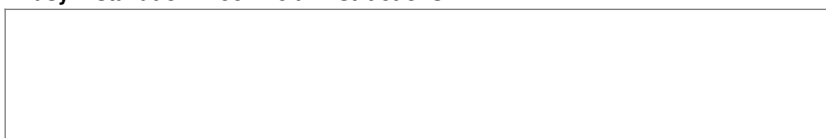
Reach and Depth of one set of Excavator Long Reach Boom And Telescopic Arm: With an impressive maximum reach of [specify distance], the telescopic arm enables operators to access difficult-to-reach areas and perform tasks at greater depths, making it ideal for tasks such as trenching, dredging, and material handling.

Maneuverability of our telescopic arm excavator: The design allows for excellent maneuverability, enabling the excavator to operate in confined spaces without compromising performance.

Compatibility of one set of excavator telescopic boom The telescopic arm is compatible with various attachments, including clamshell buckets, grapples, and hoes, expanding the excavator's functionality for different applications.

Installation of one set of Excavator Telescopic Boom Telescopic Arm:

*** Easy installation *Technical instructions**



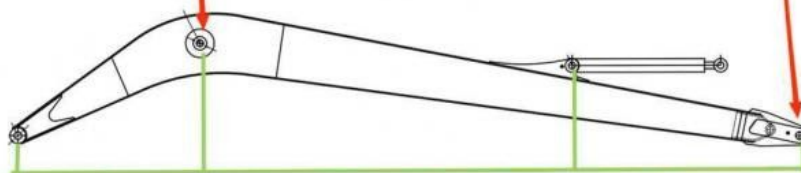


Production details of one set of Excavator Long Reach Boom And Telescopic Arm:
 * High quality material *High precision machine

Double-sided boring lathe



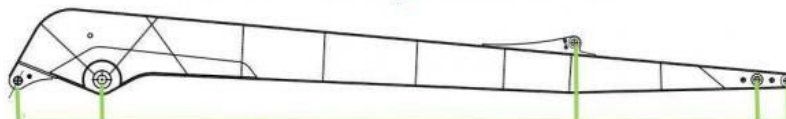
After the excavator boom and arm are assembled, the pins on the boom are drilled to ensure that the pins on the boom are parallel to each other and the cross section of the pin hole is perpendicular to the pin. The double-sided boring machine of the boom makes the hole position more accurate and the quality higher.



Make sure the cross section of the pin hole is perpendicular to the shaft.



Make sure the axis is parallel to the axis



Make sure the cross section of the pin hole is perpendicular to the shaft



Make sure the axis is parallel to the axis

Certifications we have:
* Professional * Experienced

4. Certifications



Our team show:

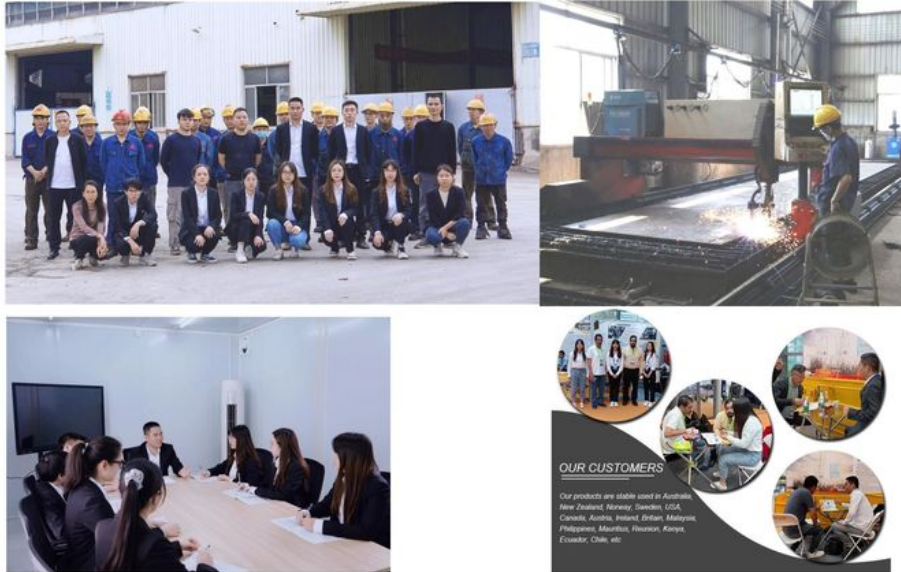
2024 Bauma Exhibition



2025 CHANGSHA INTERNATIONAL CONSTRUCTION EQUIPMENT EXHIBITION



Introduction of Kaiping Zhonghe Machinery



Any interest, feel free to contact us:



Sales Manager

Manufacturer of Excavator Arm and Boom

Whatsapp: +86 13822325403

Email: aria@excavatorboomarm.com
13822325403@163.com

Web: www.excavatorlongarm.com



Welcome to contact Aria--sales manager of Zhonghe Machinery.

Whatsapp: wa.me/+8613822325403

Email: aria@excavatorboomarm.com
13822325403@163.com

Website link: www.excavatorlongarm.com



Jiangmen Kaiping Zhonghe Machinery Manufacturing Co., Ltd



+86 13822325403



aria@excavatorboomarm.com



excavatorlongarm.com

9 Huancui West Road, Cuishanhu New Area, Kaiping City, Guangdong Province, China