



12m 14m 16m Excavator Telescopic Boom Telescopic Arm

Our Product Introduction

for more products please visit us on excavatorlongarm.com

Basic Information

- Place of Origin: Guangdong Province, China
- Brand Name: Kaiping Zhonghe Machinery
- Certification: Patents, ISO, Standard
- Model Number: Excavator Telescopic Boom Telescopic Arm 08
- Minimum Order Quantity: 1 set / piece
- Price: USD 199.00-USD11999.00
- Packaging Details: bubble / wooden cases
- Delivery Time: 5-25/works
- Payment Terms: T/T, L/C
- Supply Ability: 5 sets per week



Product Specification

- OEM / ODM: YES
- Suitable Excavator Brands: Hitachi Komatsu Kato Sany Zoomlion Kobelco
- High Efficiency: YES
- Premium: YES
- Color: According To Clients' Requirement
- Customized: YES
- MOQ: 1 Piece / Set
- Digging Depth(m): 12m 14m 16m 18m 20m
- Suitable Excavator(ton): 6 Ton - 66 Ton
- Brand: Zhonghe Machinery



More Images



Product Description

14M 16M 18M Excavator Long Reach Boom And Telescopic Arm For Digging Caisson

1. Sales amount of Telescopic arm for sale annually: **200 sets+**, more than **100 clients+**

2. Introduction of one set of Telescopic arm for sale:

Introducing our advanced telescopic arm designed specifically for excavators, engineered to enhance operational efficiency and versatility on construction sites. This innovative attachment extends the reach and capability of your excavator, making it an essential tool for any heavy-duty project. Our telescopic arm for excavator is typically suitable for digging at caisson, house foundation, deep pits.



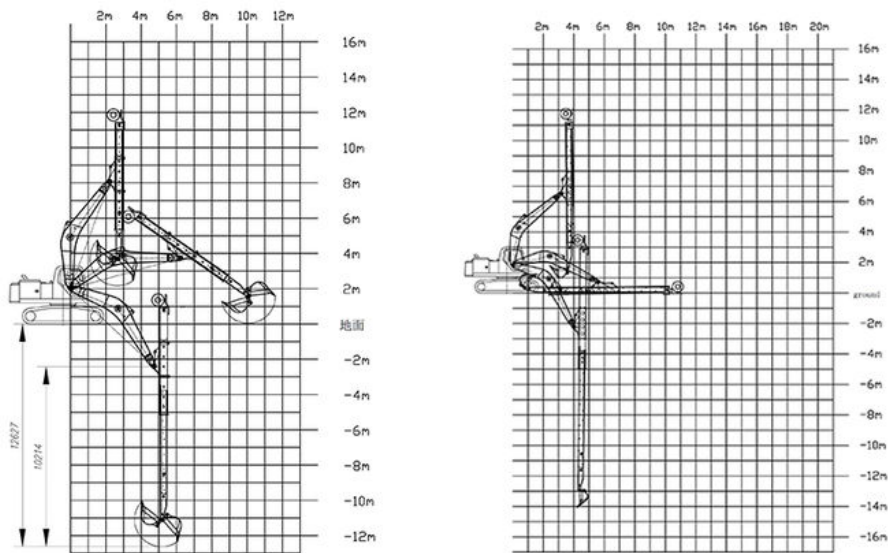
Function of telescopic excavator:

The telescopic arm for excavator provides an extended reach, allowing operators to access hard-to-reach areas without the need for additional equipment. It offers precise control and flexibility, enabling efficient digging, lifting, and material handling tasks. Whether you're working in tight spaces or need to reach higher elevations, this telescopic arm adapts seamlessly to meet your needs. Our teledipper arm is suitable for various excavators: Sany Hitachi Kato Komatsu Zoomlion Kobelco etc.



Design of telescopic arm for excavator:

Crafted from high-strength, durable materials, our telescopic arm for sale is built to withstand the rigors of heavy construction work while maintaining a lightweight profile for optimal performance. The ergonomic design ensures easy installation and compatibility with various excavator models. Its streamlined structure minimizes wear and tear, enhancing longevity and reliability.



Features of telescopic arm for excavator:

Extended Reach: Increases the working radius of your excavator, improving accessibility.

Robust Construction: Made from high-quality materials: LG700 for maximum durability.

Easy Installation: Designed for quick and hassle-free attachment to your excavator.

Precision Control: Allows for accurate movements and adjustments during operation.

Versatile Applications: Suitable for digging, lifting, and handling materials: Sand, Soil, Silt, Dirt etc across various job sites.

Elevate your excavation capabilities with our state-of-the-art telescopic arm for sale for excavator, and experience the difference in efficiency and productivity.



The front end is designed to be curved, greater digging force

Bearing part with multi-layer reinforced





The pivot end is reinforced with multiple layers to withstand greater excavation forces

The exposed bucket cylinder can be replaced without disassembling arm, which is convenient for maintenance



The reel adopts enlarged spring piece

Performance Benefits of one set of telescopic arm for excavator

Improved efficiency and productivity on job sites like digging caisson, deep pits, house foundation pits. Enhanced maneuverability in tight spaces and high efficiency.



Client's Positive Feedback from Clients:

John D., Construction Manager

"The telescopic arm has transformed our operations! Its extended reach allows us to tackle projects that were previously out of our reach. We've seen a significant increase in productivity."

Sarah L., Site Supervisor

"Installation was a breeze, and the arm operates smoothly. The precision control is impressive, making it easy to handle materials in tight spaces. Highly recommend!"

Mike R., Heavy Equipment Operator

"This attachment has become an essential part of our excavator. It's durable, reliable, and has handled everything we've thrown at it without any issues. Great investment!"

Emma T., Project Engineer

"The versatility of the telescopic arm has been a game-changer for our team. We've been able to adapt to different job

requirements easily, saving both time and resources."

David K., Equipment Rental Company Owner

"Clients love the added functionality the telescopic arm provides. It's consistently in demand, and we've received nothing but positive feedback from those who use it."

These testimonials highlight the significant impact our telescopic arm for excavator has had on our clients' operations, showcasing its reliability and effectiveness in the field.

Feedback from Clients



from Jonson:
the telescopic boom is suitable for digging caisson. excellent performance.



from Ryon:
deeper digging depth. work effectively. nice service



from Ton:
Very excellent telescopic boom. on my excavator suitably. very good job



from Cris:
safe and balanced. premium excavator boom. perfect



WIA: +86 13822325403

Specifications of one set of Excavator Long Reach Telescopic Boom

Excavator Model (ton)	Bucket Capacity (cbm)	Bucket Cylinder	Digging Depth (m)
6T	0.2	6T	6
10-12T	0.2	6T	10
20-27T	0.4	20T	12
30-36T	1	30T	12
20-27T	0.4-0.6	20T	14
24-27T	0.8	30T	14
30-36T	1	35T	14
30-36T	0.8	30T	14
30-36T	1	35T	15
24-28T	0.8	30T	15
24-28T	0.4	20T	16
30-36T	0.8	22T	16
45-50T	1.2	35T	16

Welcome to send your excavator model to us. Suitable length and model drawings will be sent soon.

Warranty and Support from Zhonghe Machinery's team:

6 months for telescopic arm and cylinders, 3 months for bucket, not include other wear parts

Call to Action



Manufacturer of Excavator Arm and Boom

Whatsapp: +86 13822325403

Email: aria@excavatorboomarm.com
13822325403@163.com

Web: www.excavatorlongarm.com



Sales Manager

Zhonghe Machinery is a big Manufacturer of Excavator telescopic arm telescopic boom

Any interest,

Welcome to contact Aria--sales manager of Zhonghe Machinery.

Whatsapp: wa.me/+8613822325403

Email: aria@excavatorboomarm.com

13822325403@163.com

Website link: www.excavatorlongarm.com

#longreacharmforexcavator #longexcavatorboom #longreachboom #excavator #excavation #longexcavatorboom
#excavatorarm #longboomexcavator #longreachboomexcavator #longboomexcavatorforsale



Jiangmen Kaiping Zhonghe Machinery Manufacturing Co., Ltd



+86 13822325403



aria@excavatorboomarm.com



excavatorlongarm.com

9 Huancui West Road, Cuishanhu New Area, Kaiping City, Guangdong Province, China