



Top 1 Telescopic Boom for Excavator Dipper Arm Telescopic Arm With Clamshell Bucket

Our Product Introduction

for more products please visit us on excavatorlongarm.com

Basic Information

- Place of Origin: Guangdong Province, China
- Brand Name: Kaiping Zhonghe Machinery Manufacturing Co. Ltd
- Certification: CE, Patents, ISO
- Model Number: Telescopic Arm for Excavator 04
- Minimum Order Quantity: 1 set / piece
- Price: USD 199.00-USD19999.00
- Packaging Details: Bubble / Wooden Cases/ Others
- Delivery Time: 5-25 Working Days
- Payment Terms: T/T, L/C or others as you request
- Supply Ability: 15 sets per week



Product Specification

- Features: Telescopic
- Material: BS900E, Stronger
- Model: Excavator Telescopic Boom Telescopic Arm 09
- Color: YES, Yellow, Red, White, Etc
- Suitable Excavators: 25ton - 66ton
- Suitable Brands: Hitachi Komatsu Sany Kato Zoomlion Etc
- High Quality: YES
- High Efficiency: YES
- Warranty: 6 Months
- OEM / ODM: YES
- Digging Depth(m) : 25m 30m 32m 35m
- Front Attachments: Grapple Clamshell Bucket



More Images



Product Description

Overview of one set of excavator dipper arm with clamshell bucket:

Introducing our state-of-the-art Telescopic Arm for Excavators, meticulously designed to elevate your excavation performance with unmatched precision and efficiency. Featuring a sophisticated multi-section construction, this arm offers extended reach and enhanced versatility, making it the perfect solution for a wide range of construction applications.

Sales Amount: Reach **100 sets** every year, more than **200+** clients



Four pulley design

There are two sliding wheels on the top and two on the bottom, which separate the high-pressure hose and the wire rope to reduce mutual wear. Less wear can extend the service life.



Adopt 30mm main rope

We use thicker wire ropes, which can withstand greater tension, are not easy to break, and withstand greater pressure. The wire ropes are highly wear-resistant and have a long service life.



26mm auxiliary wire rope

Here is the auxiliary wire rope, which is used to make the telescopic arm retractable when it is extended horizontally.



Ningbo connector

It is made of metal and has high compression resistance and expansion capacity. It is easy to load and unload, and can be loaded and unloaded freely.



High Quality----Nylon Sliders

Siding block, it is nylon material, it can reduce grinding. Our sliding wheel is POM Material, with high mechanical strength and rigidity.



lubrication concentrate system

Many holes, many holes on the top and at the side, it is easy and convenient for the operator to refill the lubrication oil, they all concentrate on the front of arm.

Applications of excavator dipper arm with clamshell bucket:

Construction work: Ideal for trenching, digging caisson, foundations, and lifting heavy materials: sand soil silt dirt rock gravel from bottom.

*Easy Operation * Longer service life-span *High efficiency



Cleaning and dredging



Telescopic arm test



Bridge construction projects



Deep pit work



For Deep foundation pit construction project



For unloading materials



For Large-scale earthworks

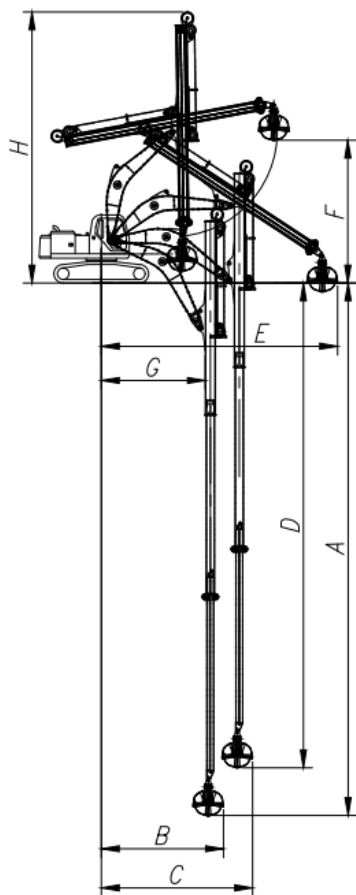


Feedback of 18m three-section telescopic arm for Cat 320
 Clients mentioned that the arm works very good.
 High effective and save energy

Specifications of one set of excavator clamshell telescopic arm:

Digging Depth(m)	Excavator Model(ton)	Bucket Capacity(cbm)
10	10-15T	0.2
12		0.2
12	20-25T	0.6
14		0.4
16		0.4
18		0.4
20	26-28	0.6
20-22	30-33T	1.5
	35-38T	
	30-33T	
25	35-38T	2.2
	40-50T	
	35-38T	
26-30	36-50T	1.5
		1.5
		2
		2
		2.2
		2.2
31-32	40-50T	2.2
		2.5

Details of one set of 30m excavator clamshell telescopic arm are as follow:



Maximum vertical digging depth: 30000mm
 Maximum vertical excavation radius: 7095mm
 Maximum vertical excavation working radius: 8801mm
 Maximum vertical digging depth: 27311mm
 Maximum vertical excavation radius: 13586mm
 Maximum soil unloading height: 8044mm
 Minimum turning radius: 6150mm
 Overall machine height at minimum turning radius: 15287mm

More product details of one set of telescopic arm for excavator:



BS900E

Every steel plate has certifications

Our steel plates are purchase from BaoGang Company which is a big and famous steel material company.

宝钢股份有限公司 产品质量证明书
BAO GANG STEEL CO., LTD. INSPECTION CERTIFICATE

规格: 武钢热轧卷板有限公司
 Manufacturer: Wuchang Iron & Steel Co., Ltd.

品名: 热轧卷板
 牌号: Q355B
 规格: 1500*3000*12
 重量: 1.57T

序号	项目	单位	要求	实测值	备注
1	化学成分				
2	力学性能				
3	金相组织				
4	表面质量				
5	尺寸偏差				
6	重量偏差				
7	交货状态				
8	检验日期				
9	检验地点				
10	检验人员				
11	检验设备				
12	检验方法				
13	检验结果				
14	检验结论				
15	检验日期				
16	检验地点				
17	检验人员				
18	检验设备				
19	检验方法				
20	检验结果				
21	检验结论				
22	检验日期				
23	检验地点				
24	检验人员				
25	检验设备				
26	检验方法				
27	检验结果				
28	检验结论				
29	检验日期				
30	检验地点				
31	检验人员				
32	检验设备				
33	检验方法				
34	检验结果				
35	检验结论				
36	检验日期				
37	检验地点				
38	检验人员				
39	检验设备				
40	检验方法				
41	检验结果				
42	检验结论				
43	检验日期				
44	检验地点				
45	检验人员				
46	检验设备				
47	检验方法				
48	检验结果				
49	检验结论				
50	检验日期				
51	检验地点				
52	检验人员				
53	检验设备				
54	检验方法				
55	检验结果				
56	检验结论				
57	检验日期				
58	检验地点				
59	检验人员				
60	检验设备				
61	检验方法				
62	检验结果				
63	检验结论				
64	检验日期				
65	检验地点				
66	检验人员				
67	检验设备				
68	检验方法				
69	检验结果				
70	检验结论				
71	检验日期				
72	检验地点				
73	检验人员				
74	检验设备				
75	检验方法				
76	检验结果				
77	检验结论				
78	检验日期				
79	检验地点				
80	检验人员				
81	检验设备				
82	检验方法				
83	检验结果				
84	检验结论				
85	检验日期				
86	检验地点				
87	检验人员				
88	检验设备				
89	检验方法				
90	检验结果				
91	检验结论				
92	检验日期				
93	检验地点				
94	检验人员				
95	检验设备				
96	检验方法				
97	检验结果				
98	检验结论				
99	检验日期				
100	检验地点				
101	检验人员				
102	检验设备				
103	检验方法				
104	检验结果				
105	检验结论				
106	检验日期				
107	检验地点				
108	检验人员				
109	检验设备				
110	检验方法				
111	检验结果				
112	检验结论				
113	检验日期				
114	检验地点				
115	检验人员				
116	检验设备				
117	检验方法				
118	检验结果				
119	检验结论				
120	检验日期				
121	检验地点				
122	检验人员				
123	检验设备				
124	检验方法				
125	检验结果				
126	检验结论				
127	检验日期				
128	检验地点				
129	检验人员				
130	检验设备				
131	检验方法				
132	检验结果				
133	检验结论				
134	检验日期				
135	检验地点				
136	检验人员				
137	检验设备				
138	检验方法				
139	检验结果				
140	检验结论				
141	检验日期				
142	检验地点				
143	检验人员				
144	检验设备				
145	检验方法				
146	检验结果				
147	检验结论				
148	检验日期				
149	检验地点				
150	检验人员				
151	检验设备				
152	检验方法				
153	检验结果				
154	检验结论				
155	检验日期				
156	检验地点				
157	检验人员				
158	检验设备				
159	检验方法				
160	检验结果				
161	检验结论				
162	检验日期				
163	检验地点				
164	检验人员				
165	检验设备				
166	检验方法				
167	检验结果				
168	检验结论				
169	检验日期				
170	检验地点				
171	检验人员				
172	检验设备				
173	检验方法				
174	检验结果				
175	检验结论				
176	检验日期				
177	检验地点				
178	检验人员				
179	检验设备				
180	检验方法				
181	检验结果				
182	检验结论				
183	检验日期				
184	检验地点				
185	检验人员				
186	检验设备				
187	检验方法				
188	检验结果				
189	检验结论				
190	检验日期				
191	检验地点				
192	检验人员				
193	检验设备				
194	检验方法				
195	检验结果				
196	检验结论				
197	检验日期				
198	检验地点				
199	检验人员				
200	检验设备				
201	检验方法				
202	检验结果				
203	检验结论				
204	检验日期				
205	检验地点				
206	检验人员				
207	检验设备				
208	检验方法				
209	检验结果				
210	检验结论				
211	检验日期				
212	检验地点				
213	检验人员				
214	检验设备				
215	检验方法				
216	检验结果				
217	检验结论				
218	检验日期				
219	检验地点				
220	检验人员				
221	检验设备				
222	检验方法				
223	检验结果				
224	检验结论				
225	检验日期				
226	检验地点				
227	检验人员				
228	检验设备				
229	检验方法				
230	检验结果				
231	检验结论				
232	检验日期				
233	检验地点				
234	检验人员				
235	检验设备				
236	检验方法				
237	检验结果				
238	检验结论				
239	检验日期				
240	检验地点				
241	检验人员				
242	检验设备				
243	检验方法				
244	检验结果				
245	检验结论				
246	检验日期				
247	检验地点				
248	检验人员				
249	检验设备				
250	检验方法				
251	检验结果				
252	检验结论				
253	检验日期				
254	检验地点				
255	检验人员				
256	检验设备				
257	检验方法				
258	检验结果				
259	检验结论				
260	检验日期				
261	检验地点				
262	检验人员				
263	检验设备				
264	检验方法				
265	检验结果				
266	检验结论				
267	检验日期				
268	检验地点				
269	检验人员				
270	检验设备				
271	检验方法				
272	检验结果				
273	检验结论				
274	检验日期				

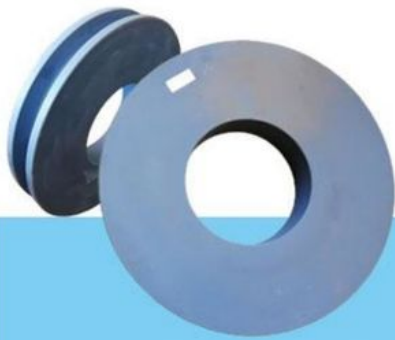


High-speed Heavy-load Bearings



The bearings are high-speed heavy-load bearings, and the bearings use larger diameters to withstand greater loads.

* **High-speed Heavy-load Bearings:** The bearings of one set of telescopic arm for excavator can bear huge stress

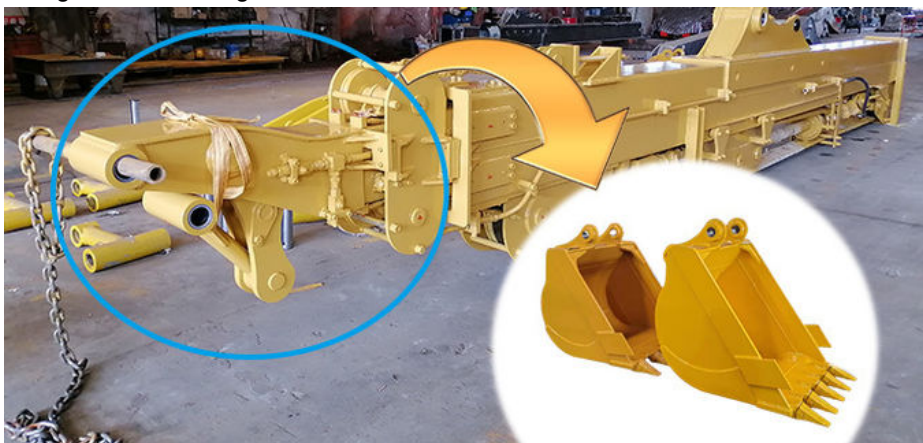


MC Steel



The pulley is made of MC steel, which has the same hardness as steel, but is light and wear-resistant. The wheel diameter is enlarged to withstand greater loads.

* **Pulley adopts MC steel** which has the same hardness as steel but its light and wear-resistant. The wheel diameter is enlarged to withstand greater loads.



* The **front head** can be designed to carry standard bucket.



* The clamshell bucket can be exchange with a **grapple**. The excavator grapple can be used to carry stone, gravel, etc. The capacity is large enough.

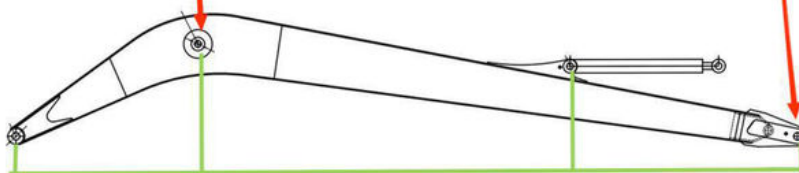
Production details of one set of excavator clamshell telescopic arm:

* High precision: the Telescopic Arm With Clamshell Bucket is proceeded by double-sided boring lathe which ensure machining precision of no less than **0.05mm**

Double-sided boring lathe



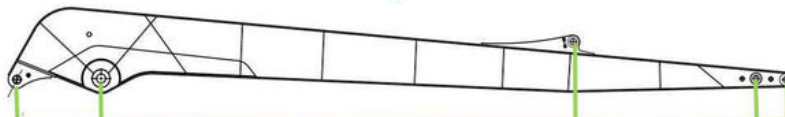
After the excavator boom and arm are assembled, the pins on the boom are drilled to ensure that the pins on the boom are parallel to each other and the cross section of the pin hole is perpendicular to the pin. The double-sided boring machine of the boom makes the hole position more accurate and the quality higher.



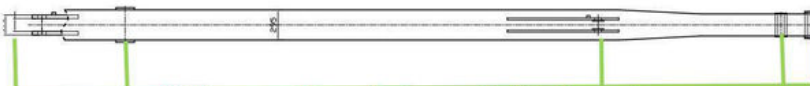
Make sure the cross section of the pin hole is perpendicular to the shaft.



Make sure the axis is parallel to the axis



Make sure the cross section of the pin hole is perpendicular to the shaft



Make sure the axis is parallel to the axis

Certifications we have:

4. Certifications



Calling to Action! Welcome to contact!



Sales Manager

Manufacturer of Excavator Arm and Boom

Whatsapp: +86 13822325403

Email: aria@excavatorboomarm.com
13822325403@163.com

Web: www.excavatorlongarm.com



Whatsapp: wa.me/+8613822325403
Email: aria@excavatorboomarm.com
13822325403@163.com



Jiangmen Kaiping Zhonghe Machinery Manufacturing Co., Ltd



+86 13822325403



aria@excavatorboomarm.com



excavatorlongarm.com

9 Huancui West Road, Cuishanhu New Area, Kaiping City, Guangdong Province, China