



16m 18m Telescopic Arm for Excavator Telescopic Boom Hydraulic telescoping excavator

Our Product Introduction

for more products please visit us on excavatorlongarm.com

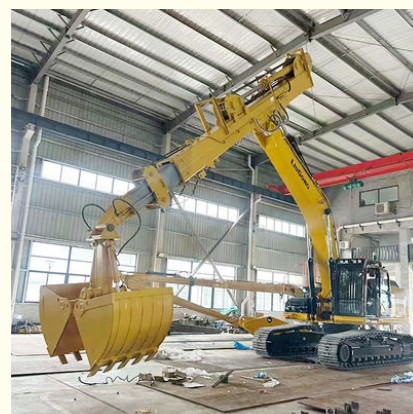
Basic Information

- Place of Origin: Guangdong Province, China
- Brand Name: Zhonghe Machinery
- Certification: CE, Patents, ISO
- Model Number: 25m 28m 30m 32m
- Minimum Order Quantity: 1 set / piece
- Price: USD 199.00-USD18999.00
- Packaging Details: Bubble / wooden cases/ others
- Delivery Time: 5-25/works
- Payment Terms: T/T, L/C or others as you request
- Supply Ability: 15 sets per week



Product Specification

- Features: Telescopic
- Material: BS900E, Stronger
- Model: Excavator Telescopic Boom Telescopic Arm 09
- Suitable Excavators: 25ton - 66ton
- Suitable Brands: Hitachi Komatsu Sany Kato Zoomlion Etc
- High Quality: YES
- High Efficiency: YES
- Warranty: 6 Months



More Images



Product Description

Overview of one set of telescopic arm for excavator:

Introducing our advanced Telescopic Arm for Excavators, engineered to enhance your excavation capabilities with precision and efficiency. This innovative arm features a multi-section design that allows for extended reach and improved versatility, making it ideal for various construction tasks.



Key Features of one set of telescopic boom excavator:

Robust Construction: Crafted from high-strength steel, the telescopic arm for excavator is designed to withstand heavy loads and harsh working conditions, ensuring durability and longevity. The material we use is Shaogang BS900E material which is high strength and can bear huge stress.

Extended Reach: With its extendable sections, excavator telescopic boom telescopic arm can reach farther than traditional models, allowing operators to access hard-to-reach areas without repositioning the entire excavator. Excavator Long Reach Boom And Telescopic Arm is a versatility tool in digging caisson, house foundation pit, deep pit etc.

Hydraulic Operation: The integrated hydraulic system of excavator long reach boom and telescopic arm enables smooth and precise extension and retraction, providing operators with better control and responsiveness during operation.

Compact Design: When retracted, telescopic arm for excavator maintains a compact profile, making it easier to maneuver in tight spaces and transport between job sites.

Versatile Attachments: Compatible with a range of attachments, including buckets, grapples, and augers, the excavator telescopic arm with clamshell bucket adapts to various tasks, enhancing the functionality of your excavator.



4. Examples

2 sets of 25m three-section telescopic arm



for Dossan 530



Four pulley design

There are two sliding wheels on the top and two on the bottom, which separate the high-pressure hose and the wire rope to reduce mutual wear. Less wear can extend the service life.



Adopt 30mm main rope

We use thicker wire ropes, which can withstand greater tension, are not easy to break, and withstand greater pressure. The wire ropes are highly wear-resistant and have a long service life.



26mm auxiliary wire rope

Here is the auxiliary wire rope, which is used to make the telescopic arm retractable when it is extended horizontally.



Ningbo connector

It is made of metal and has high compression resistance and expansion capacity. It is easy to load and unload, and can be loaded and unloaded freely.



High Quality----Nylon Sliders

Siding block, it is nylon material, it can reduce grinding. Our sliding wheel is POM Material, with high mechanical strength and rigidity.



lubrication concentrate system

Many holes, many holes on the top and at the side, it is easy and convenient for the operator to refill the lubrication oil, they all concentrate on the front of arm.

Applications of our telescopic arm for sale:

Construction: Ideal for trenching, digging foundations, and lifting heavy materials from bottom.

* Longer service life-span *High efficiency *Easy Operation



Cleaning and dredging



Telescopic arm test



Bridge construction projects



Deep pit work



For Deep foundation pit construction project



For unloading materials



For Large-scale earthworks



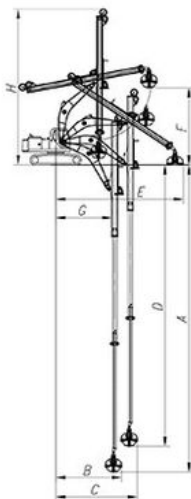
Feedback of 18m three-section telescopic arm for Cat 320
 Clients mentioned that the arm works very good.
 High effective and save energy

Specifications of one set of excavator dipper arm:

Digging Depth(m)	Excavator Model(ton)	Bucket Capacity(cbm)
10	10-15T	0.2
12		0.2
12	20-25T	0.6
14		0.4
16		0.4
18		0.4
20	26-28	0.6
20-22	30-33T	1.5
	35-38T	
	30-33T	
25	35-38T	2.2
	40-50T	
	35-38T	
26-30	36-50T	1.5
		1.5
		2
		2
		2.2
		2.2
31-32	40-50T	2.2
		2.5

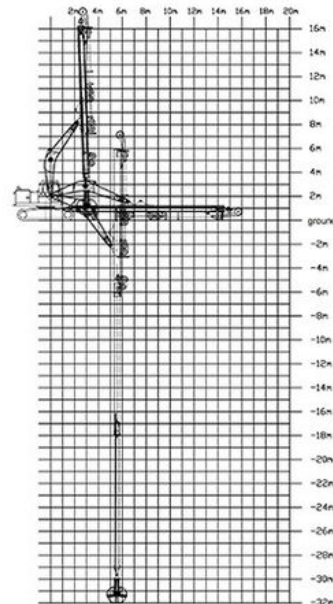
Welcome to send your excavator model to us. Suitable length and model drawing of one set of Telescopic Arm With Clamshell Bucket will be sent later.

16m Telescopic Arm



16M- Telescopic Boom	
A. Maximum vertical digging depth	16000mm
B. Maximum vertical depth digging radius	7095mm
C. Maximum vertical excavation working radius	8801mm
D. Maximum vertical digging depth	13340mm
E. Maximum vertical excavation working radius	13585mm
F. Maximum unloading height	8044mm
G. Minimum turning radius	6150mm
H. The minimum turning radius is the height of the whole machine	8087mm

32m Telescopic Arm



Conclusion

Upgrade your excavator with our Telescopic Arm for Excavator, and experience increased productivity and efficiency on every job site. With its robust design and versatile features, this arm is a game-changer for professionals in the construction and landscaping industries.



Sales Manager

Manufacturer of Excavator Arm and Boom

Whatsapp: +86 13822325403

Email: aria@excavatorboomarm.com
13822325403@163.com

Web: www.excavatorlongarm.com



Whatsapp: wa.me/+8613822325403
Email: aria@excavatorboomarm.com
13822325403@163.com



Jiangmen Kaiping Zhonghe Machinery Manufacturing Co., Ltd



+86 13822325403



aria@excavatorboomarm.com



excavatorlongarm.com

9 Huancui West Road, Cuishanhu New Area, Kaiping City, Guangdong Province, China