



## Top 1 Excavator Telescopic Arm Excavator Telescopic Boom

Our Product Introduction

for more products please visit us on [excavatorlongarm.com](http://excavatorlongarm.com)

### Basic Information

- Place of Origin: Guangdong Province, China
- Brand Name: Kaiping Zhonghe Machinery Manufacturing Co. Ltd
- Certification: CE, Patents, ISO
- Model Number: Hydraulic Telescoping Excavator 01
- Minimum Order Quantity: 1 set / piece
- Price: USD 199.00-USD12999.00
- Packaging Details: bubble or wooden case / others
- Delivery Time: 5-20 days
- Payment Terms: T/T, L/C or others as you request
- Supply Ability: 5 sets per week



### Product Specification

- Material: LG700 / HG785 / Q690D
- Color: Red, Yellow, Blue White Customized
- Buckets(cbm): 0.5cbm 1cbm 1.5cbm 2cbm
- OEM/ODM: YES
- Warranty: YES, 6 Months, 3 Months
- Digging Depth(m): 10m 12m 14m 16m 18m 20m
- Package: YES, Bubble, Wooden Cases
- Testings: YES
- After-sales Service: YES
- Suitable Excavator (ton): 10ton To 60ton
- Suitable Excavator Brands: Hitachi Komatsu Sany Kato Etc
- High Efficiency: YES
- Premium: YES
- Long Reach: YES



### More Images



## Product Description

### Top 1 Excavator Teledipper Hydraulic Telescoping Excavator

**Sales amount of our Excavator Telescopic Boom Telescopic Arm : 200 sets+, 500 clients+**

Introduction of one set of telescopic boom for excavator:

Our Telescopic Boom for excavators represents a pinnacle of engineering excellence, designed to enhance the versatility and efficiency of your excavation equipment. This comprehensive attachment features advanced hydraulic technology, allowing for seamless extension and retraction to reach challenging work areas with precision.

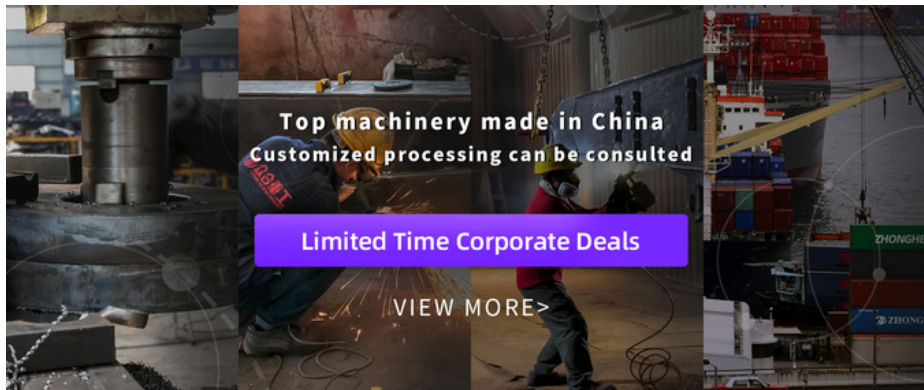
Crafted from high-strength materials, our excavator telescopic boom ensures exceptional durability and performance under demanding conditions. The innovative design maximizes reach while maintaining stability, enabling operators to navigate tight spaces and perform complex tasks with ease.

With a focus on safety and reliability, our telescopic boom for excavator is engineered to withstand significant stress and heavy loads, making it an indispensable tool for a wide range of applications, from construction and landscaping to utility work.

Experience the difference that superior design and quality materials can make in your excavation projects with our advanced telescopic boom.

**Key word of our excavator teledipper:** Excavator Telescopic Boom Telescopic Arm, Excavator Long Reach Boom And Telescopic Arm, Excavator Teledipper, Excavator Telescopic Arm etc.

Suitable for various excavators:



More products details of telescopic excavator boom:





**Compatibility with Major Excavator Brands:** Our telescopic boom is designed to be compatible with a wide range of excavator brands, including Hitachi, Komatsu, SANY, Kato, and Sumitomo, ensuring versatility across different equipment.

**Universal Installation Sizes:** Engineered for adaptability, our telescopic boom features installation sizes that accommodate every excavator model, facilitating seamless integration and installation.

**Custom Length Options:** The length of the telescopic boom sliding arm for excavator can be tailored to match the specific model of the excavator, providing optimal performance and functionality for various applications.



**Telescopic Arm**



**The front end is designed to be curved, greater digging force**

**Bearing part with multi-layer reinforced**







The pivot end is reinforced with multiple layers to withstand greater excavation forces

The exposed bucket cylinder can be replaced without disassembling arm, which is convenient for maintenance

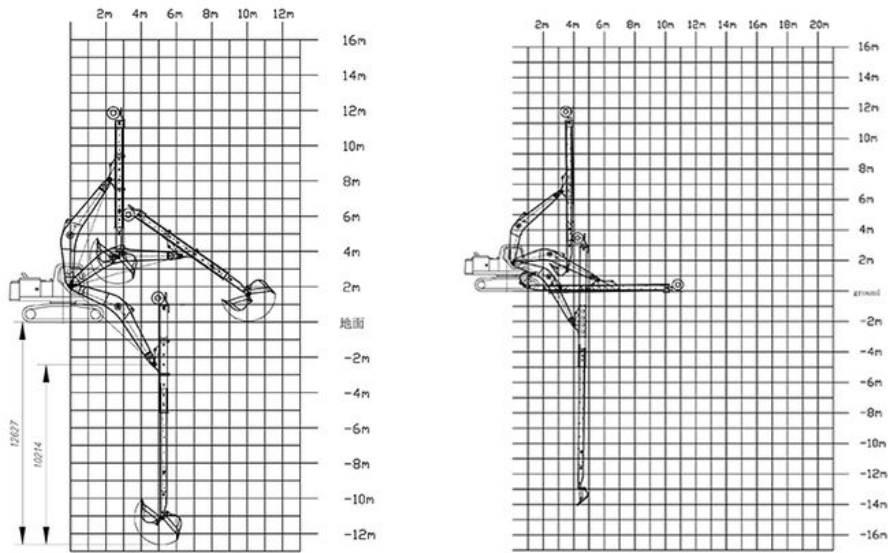


The reel adopts enlarged spring piece

#### Specifications of one set of telescopic arm for excavator:

Welcome to send your excavator model to us for double check. Suitable length and model drawing will be sent soon.

Excavator Model (ton)	Bucket (cbm)	Bucket Cylinder(ton)	Digging Depth(m)
6T	0.2	6T	6
10-12T	0.2	6T	10
20-27T	0.4	20T	12
30-36T	1	30T	12
20-27T	0.4-0.6	20T	14
24-27T	0.8	30T	14
30-36T	1	35T	14
30-36T	0.8	30T	14
30-36T	1	35T	15
24-28T	0.8	30T	15
24-28T	0.4	20T	16
30-36T	0.8	22T	16
45-50T	1.2	35T	16



### Production details of one set of excavator telescope

\* Standard \* Professional \* Experienced \* Full Tests

### Steel Material of one set of telescopic arm for excavator--LG700:

#### Every steel plate has certifications

Our steel plates are purchase from BaoGang Company which is a big and famous steel material company.

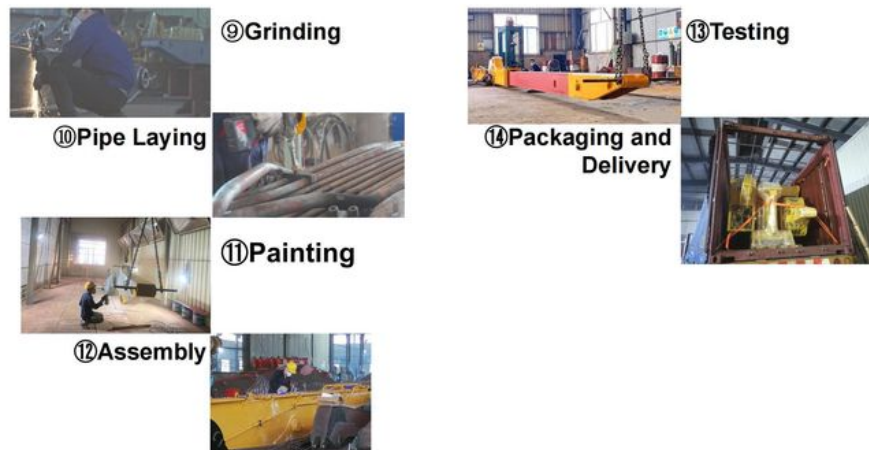
宝 钢 宝山钢铁股份有限公司		产品质量证明书		INSPECTION CERTIFICATE	
Manufacturer: Baosteel Iron & Steel Co., Ltd.		产品名称: 挖掘机臂架		规格: LG700	
产品牌号: Q355B		执行标准: GB/T 1591-2018		检验日期: 2023.10.10	
检验批号: 2023101001		检验项目: 化学成分, 力学性能		检验结果: 合格	
检验人员: 张三		检验地点: 宝钢集团		检验设备: 光谱仪, 拉伸试验机	
检验结论: 该批产品符合标准要求, 准予出厂。		检验单位: 宝钢集团质量检验中心		检验人员: 张三	

宝 钢 宝山钢铁股份有限公司		产品质量证明书		INSPECTION CERTIFICATE	
Manufacturer: Baosteel Iron & Steel Co., Ltd.		产品名称: 挖掘机臂架		规格: LG700	
产品牌号: Q355B		执行标准: GB/T 1591-2018		检验日期: 2023.10.10	
检验批号: 2023101001		检验项目: 化学成分, 力学性能		检验结果: 合格	
检验人员: 张三		检验地点: 宝钢集团		检验设备: 光谱仪, 拉伸试验机	
检验结论: 该批产品符合标准要求, 准予出厂。		检验单位: 宝钢集团质量检验中心		检验人员: 张三	

## Product Manufacturing Process



## Product Manufacturing Process



### Use Cases of Our Excavator Telescopic Arm

**Increased Excavation Force:** Our telescopic arm for excavator delivers superior digging power, enabling operators to tackle demanding excavation tasks with ease.

**Enhanced Bucket Capacity:** Designed to accommodate larger buckets, our excavator telescopic arm maximizes material handling capabilities, improving overall productivity.

**User-Friendly Operation:** The intuitive design facilitates easy operation, allowing operators to efficiently maneuver the arm for various tasks without extensive training.

**Optimized Efficiency:** Engineered for high efficiency, our telescopic arm excavator streamlines workflows and reduces cycle times, making it an ideal choice for a wide range of excavation applications.





**Kaiping Zhonghe Machinery's Team Show:**





## 2024 Bauma Exhibition



## 2025 CHANGSHA INTERNATIONAL CONSTRUCTION EQUIPMENT EXHIBITION



\* Usefull \*Experienced \*Professional \*Longer service-span \*Professional service  
**Call to Action**



**Sales Manager**

### Manufacturer of Excavator Arm and Boom

Whatsapp: +86 13822325403

Email: [aria@excavatorboomarm.com](mailto:aria@excavatorboomarm.com)  
13822325403@163.com

Web: [www.excavatorlongarm.com](http://www.excavatorlongarm.com)



### Zhonghe Machinery is a big Manufacturer of Excavator Long Reach Boom And Telescopic Arm Any interest,

Welcome to contact Aria--sales manager of Zhonghe Machinery.

Whatsapp: [wa.me/+8613822325403](https://wa.me/+8613822325403)

Email: [aria@excavatorboomarm.com](mailto:aria@excavatorboomarm.com)

13822325403@163.com

Website link: [www.excavatorlongarm.com](http://www.excavatorlongarm.com)

#longreacharmforexcavator #longexcavatorboom #longreachboom #excavator #excavation #longexcavatorboom  
#excavatorarm #longboomexcavator #longreachboomexcavator #longboomexcavatorforsale

### Top Picks of Our Excavator Arms and Booms:



**Two-section Demolition Arm**



Pile Arm Pile Boom



Tunnel Arm / Shorten Arm



Jiangmen Kaiping Zhonghe Machinery Manufacturing Co., Ltd



+86 13822325403



aria@excavatorboomarm.com



excavatorlongarm.com

9 Huancui West Road, Cuishanhu New Area, Kaiping City, Guangdong Province, China