



## 16M Telescopic Arm for Excavator Telescopic Boom Telescopic Arm

Our Product Introduction

for more products please visit us on excavatorlongarm.com

### Basic Information

- Place of Origin: Guangdong Province, China
- Brand Name: Kaiping Zhonghe Machinery Manufacturing Co. Ltd
- Certification: CE, Patents, ISO
- Model Number: Hydraulic Telescoping Excavator 01
- Minimum Order Quantity: 1 set / piece
- Price: USD 199.00-USD11999.00
- Packaging Details: bubble or wooden case / others
- Delivery Time: 5-20 days
- Payment Terms: T/T, L/C or others as you request
- Supply Ability: 5 sets per week

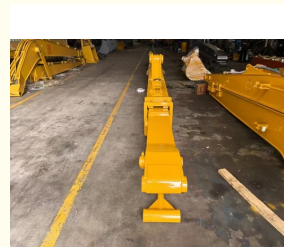


### Product Specification

- OEM/ODM: YES
- Material: LG700 / HG785 / Q690D
- Suitable Excavator (ton): 10ton To 60ton
- Warranty: YES, 6 Months, 3 Months
- Digging Depth(m): 10m 12m 14m 16m 18m 20m
- Package: YES, Bubble, Wooden Cases
- High Efficiency: YES
- Color: Red, Yellow, Blue White Customized
- Testings: YES
- After-sales Service: YES
- Suitable Excavator Brands: Hitachi Komatsu Sany Kato Etc
- Buckets: 0.5cbm 1cbm 1.5cbm 2cbm



### More Images



## Product Description

### High Efficiency Excavator Long Reach Boom And Telescopic Arm

#### Introduction of one set of telescopic boom for excavator:

**Sales amount of our telescopic arm for excavator:** 200 sets+, 500 clients+

Our Hydraulic Telescopic Arm, featuring a comprehensive Long Reach Boom and Long Arm, is engineered for superior performance and versatility. Utilizing a powerful long cylinder, this system allows for effortless extension and retraction, enhancing operational efficiency.

Designed with a compact swing range, telescopic arm excavator excels in confined spaces such as house foundation pits and deep excavations. This capability enables operators to work effectively in challenging environments where traditional arms may struggle.

Quality is paramount; therefore, all components subjected to significant stress are reinforced multiple times to ensure exceptional durability and reliability. This attention to detail guarantees optimal performance and longevity, making our telescopic arm for excavator an invaluable asset for any excavation project.



**Key word of our telescopic arm for excavator:** excavator telescopic arm, telescopic arm for excavator, excavator section telescopic arm, telescopic boom excavator, telescopic excavator etc.

#### More products details of telescopic excavator boom:

- \* **Suitable for various excavator brands:** Hitachi Komatsu Sanny Kato Sumitomo etc
- \* **Installation sizes:** Suitable for every excavator
- \* **Length of one set of excavator telescopic boom sliding arm** According to the excavator model







**Telescopic Arm**



The front end is designed to be curved, greater digging force

Bearing part with multi-layer reinforced





The pivot end is reinforced with multiple layers to withstand greater excavation forces

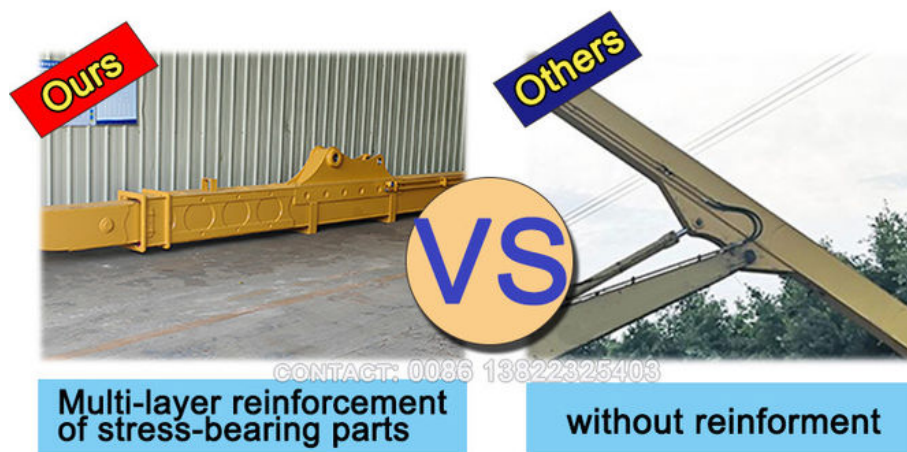
The exposed bucket cylinder can be replaced without disassembling arm, which is convenient for maintenance



The reel adopts enlarged spring piece

### Why Our Excavator Long Reach Stick Boom and Arm Outperform Other Suppliers?

**1. Advanced Tube Design:** The steel tube is a critical component of our Excavator Long Reach Stick Boom and Arm. It serves as the connection point for cylinders that endure substantial stress and heavy loads. Our enhanced design prioritizes strength and durability, ensuring optimal performance under demanding conditions. This robust engineering sets our product apart from competitors, providing reliability and longevity in the field.



**Enhanced Spring Hose Reel:** The quality of the spring hose reel significantly impacts service life and operational efficiency. Our telescopic arm is equipped with an enlarged spring hose reel, designed for high efficiency and reliability, minimizing the risk of failure. In contrast, competitors often use smaller spring hose reels, which tend to have higher failure rates, compromising performance and longevity. Our superior design ensures consistent functionality, making it a dependable choice for demanding applications.





**The reel adopts enlarged spring piece**

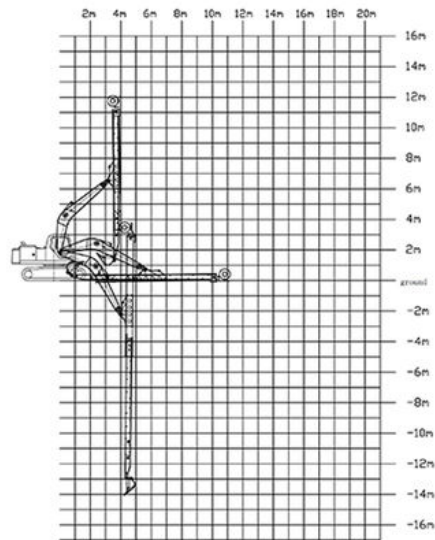
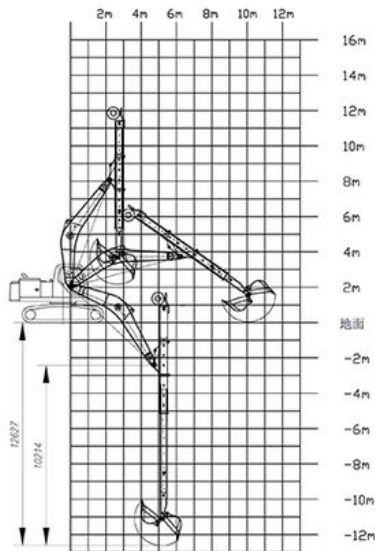


**common type**

**Specifications of one set of Excavator Long Reach Telescopic Boom:**

Excavator Model (ton)	Bucket (cbm)	Bucket Cylinder (ton)	Digging Depth (m)
6T	0.2	6T	6
10-12T	0.2	6T	10
20-27T	0.4	20T	12
30-36T	1	30T	12
20-27T	0.4-0.6	20T	14
24-27T	0.8	30T	14
30-36T	1	35T	14
30-36T	0.8	30T	14
30-36T	1	35T	15
24-28T	0.8	30T	15
24-28T	0.4	20T	16
30-36T	0.8	22T	16
45-50T	1.2	35T	16

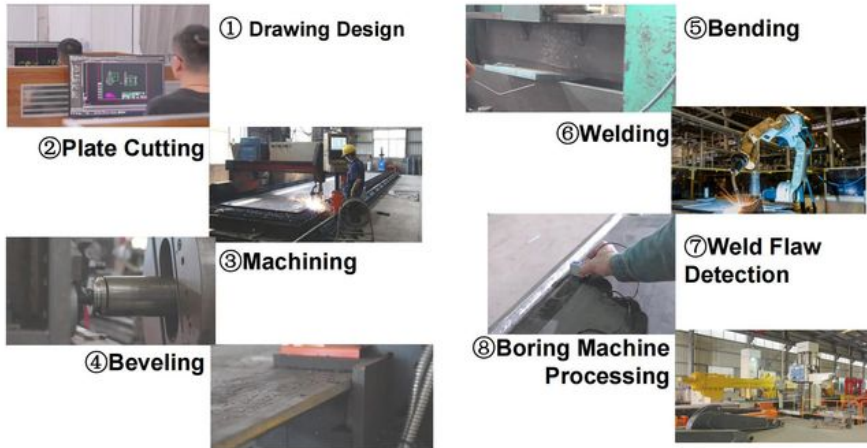
Welcome to send your excavator model to us for double check.



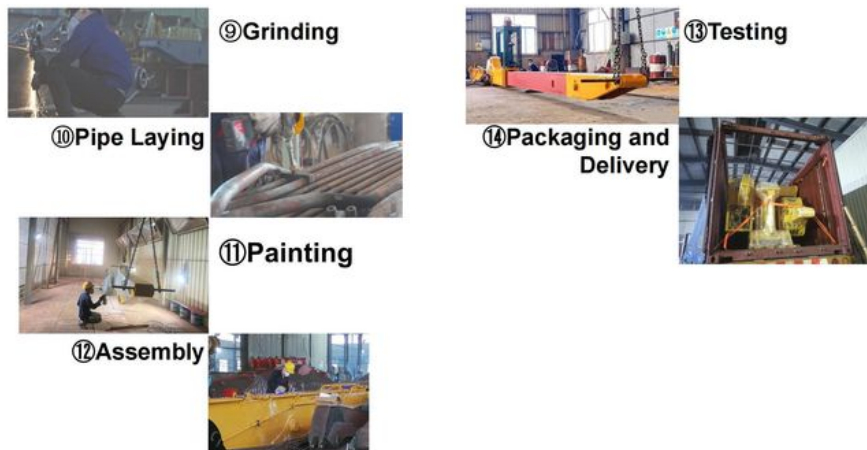
**Production details of one set of telescopic arm for excavator:**

\* Professional \* Experienced \* Standard

## Product Manufacturing Process



## Product Manufacturing Process



### Use Cases of our excavator telescopic arm:

- \* Bigger excavation force
- \* Larger bucket capacity
- \* Easy operation
- \* High efficiency



**Customer Reviews of our hydraulic telescoping excavator:**



# Feedback from Clients



from Jonson:  
the telescopic boom is suitable for  
digging caisson. excellent  
performance.



from Ryon:  
deeper digging depth. work  
effectively. nice service



WIA: +86 13822325403



from Ton:  
Very excellent telescopic boom.  
on my excavator suitably. very  
good job



from Cris:  
safe and balanced. premium  
excavator boom. perfect

\* Usefull \*Experienced \*Professional \*Longer service-span \*Professional service  
**Call to Action**



Sales Manager

## Manufacturer of Excavator Arm and Boom

Whatsapp: +86 13822325403

Email: [aria@excavatorboomarm.com](mailto:aria@excavatorboomarm.com)  
[13822325403@163.com](mailto:13822325403@163.com)

Web: [www.excavatorlongarm.com](http://www.excavatorlongarm.com)



### Zhonghe Machinery is a big Manufacturer of Excavator Long Reach Boom And Telescopic Arm Any interest,

Welcome to contact Aria--sales manager of Zhonghe Machinery.

Whatsapp: [wa.me/+8613822325403](https://wa.me/+8613822325403)

Email: [aria@excavatorboomarm.com](mailto:aria@excavatorboomarm.com)

[13822325403@163.com](mailto:13822325403@163.com)

Website link: [www.excavatorlongarm.com](http://www.excavatorlongarm.com)

#longreacharmforexcavator #longexcavatorboom #longreachboom #excavator #excavation #longexcavatorboom  
#excavatorarm #longboomexcavator #longreachboomexcavator #longboomexcavatorforsale

### Top Picks of Our Excavator Arms and Booms:



Two-section Demolition Arm



Pile Arm Pile Boom



Tunnel Arm / Shorten Arm





**Jiangmen Kaiping Zhonghe Machinery Manufacturing Co., Ltd**



+86 13822325403



aria@excavatorboomarm.com



excavatorlongarm.com

9 Huancui West Road, Cuishanhu New Area, Kaiping City, Guangdong Province, China