



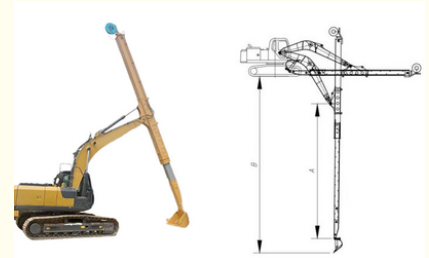
Telescopic Arm for Excavator 14m 16m 18m Excavator Long Reach Boom

Our Product Introduction

for more products please visit us on excavatorlongarm.com

Basic Information

- Place of Origin: Guangdong Province, China
- Brand Name: Kaiping Zhonghe Machinery Manufacturing Co. Ltd
- Certification: CE, Patents, ISO
- Model Number: Excavator Long Reach Telescopic Boom 06
- Minimum Order Quantity: 1 set / piece
- Price: USD 199.00-USD8999.00
- Packaging Details: bubble or wooden case / others
- Delivery Time: 5-20 days
- Payment Terms: T/T, L/C or others as you request
- Supply Ability: 5 sets per week



24-27T	0.8	30T	14
30-36T	1	35T	14
30-36T	0.8	30T	14
30-36T	1	35T	15
24-28T	0.8	30T	15
24-28T	0.4	20T	16
30-36T	0.8	22T	16

Product Specification

- Material: LG700
- Digging Depth(m): 10m 12m 14m 16m 18m 20m
- Package: YES
- Color: Red, Yellow, Blue White Customized
- OEM/ODM: YES
- After-sales Service: YES
- Warranty: YES, 6 Months
- High Efficiency: YES
- Suitable Excavator (ton): 10ton To 60ton
- Testing: YES



More Images



Product Description

High Efficiency Excavator Long Reach Telescopic Boom

Introduction of one set of Excavator Long Reach Telescopic Boom:

Excavator long reach telescopic boom extends the operational range of your excavator, allowing for deeper digging and enhanced productivity in various applications—from construction and landscaping to utility work. With a focus on durability and performance, our Long Reach Telescopic Boom is built to withstand the rigors of tough job sites while providing exceptional stability and control.

Our commitment to excellence is reflected in every aspect of the design, from the intuitive quick connect system that facilitates seamless attachment changes to the robust hydraulic system that ensures precise maneuverability. As industry leaders, we understand the challenges faced by operators, and excavator telescopic boom telescopic arm is tailored to meet those needs with unmatched reliability.

Key word: Telescopic arm for sale, Excavators Boom Dipper Arm, telescopic boom for excavator, telescopic excavator



Key Features of one set of Telescopic Arm telescopic Boom Arm:

Feature 1: Customizable Reach

The excavator telescopic arm features adjustable reach, allowing for both extension and retraction. This enables operators to tailor the arm's length to meet the specific requirements of each task. Our Telescopic Boom Long Reach Boom Long Arm is very suitable for digging house foundation pit, deep pits.

Feature 2: Enhanced Lifting Capacity

Designed with a robust structure, excavator telescopic boom sliding arm offers increased lifting capacity compared to standard arms, enabling it to handle heavier loads with ease.



The front end is designed to be curved, greater digging force

Bearing part with multi-layer reinforced





The pivot end is reinforced with multiple layers to withstand greater excavation forces

The exposed bucket cylinder can be replaced without disassembling arm, which is convenient for maintenance



The reel adopts enlarged spring piece

Benefits of the Excavator Telescopic Boom Telescopic Arm

User Advantages of Telescopic arm for sale

Increased Accessibility

The telescopic boom for excavator extends the excavator's reach, allowing operators to access hard-to-reach areas without needing to move the entire machine. This enhanced accessibility enables efficient work in tight spaces or elevated locations, significantly reducing the time and effort required for various tasks.

Enhanced Efficiency

The telescopic arm for excavator facilitates deeper and more precise digging, minimizing the need for multiple machines or labor-intensive manual work. This efficiency accelerates project completion and lowers labor costs, enabling users to finish jobs more quickly and economically.

Improved Safety

Operating from a distance with the extended boom enhances safety for both operators and crew members. This feature reduces the risk of accidents by allowing operators to maintain a safe distance from potential hazards, such as falling debris or unstable ground.

Unique Selling Proposition: What Differentiates Our Excavator Telescopic Boom Telescopic Arm from Competitors?

Innovative Design

Excavator Long Reach Boom And Telescopic Arm boasts a cutting-edge design that maximizes reach while ensuring stability and control. The streamlined profile minimizes drag and enhances maneuverability, facilitating navigation in tight spaces.

Superior Material Quality

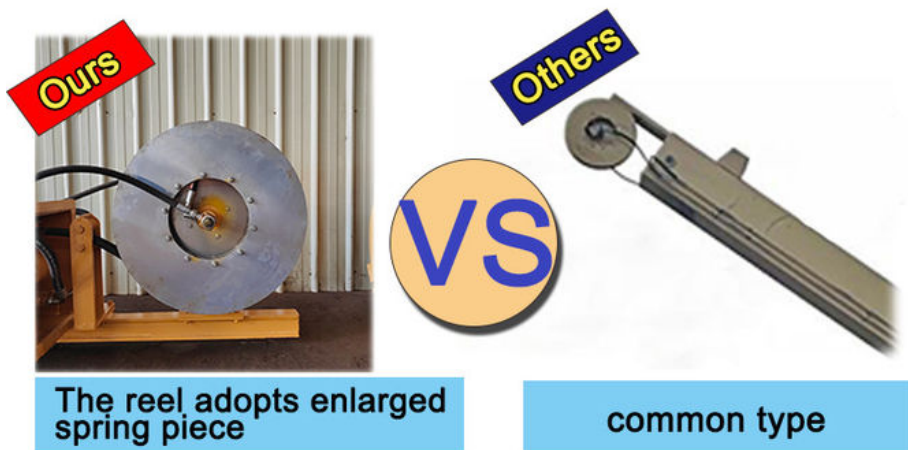
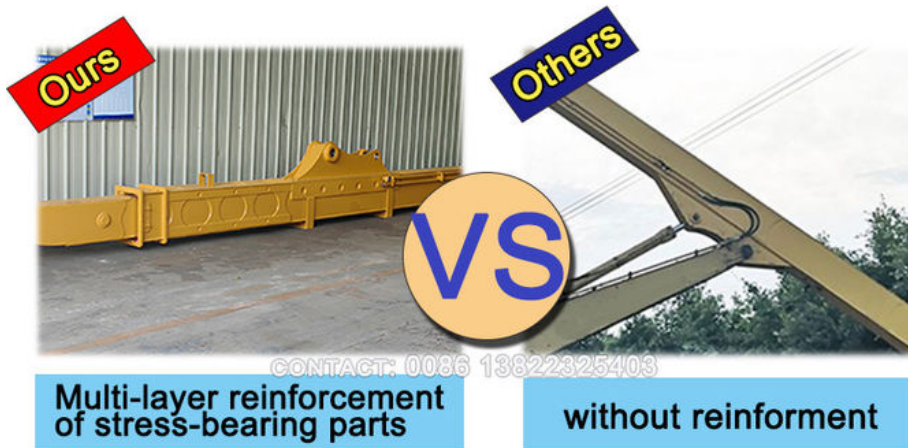
Constructed from high-grade materials, our telescopic excavator arm is engineered for exceptional durability and longevity. Its robust construction withstands harsh conditions and heavy usage, outperforming competitors that rely on lower-quality materials.

Advanced Hydraulic System

Equipped with an advanced hydraulic system, our telescopic arm for excavator provides smoother operation and quicker response times. This technology allows for precise movements, making it ideal for delicate tasks and ensuring optimal performance across various applications.

User-Friendly Quick Connect System

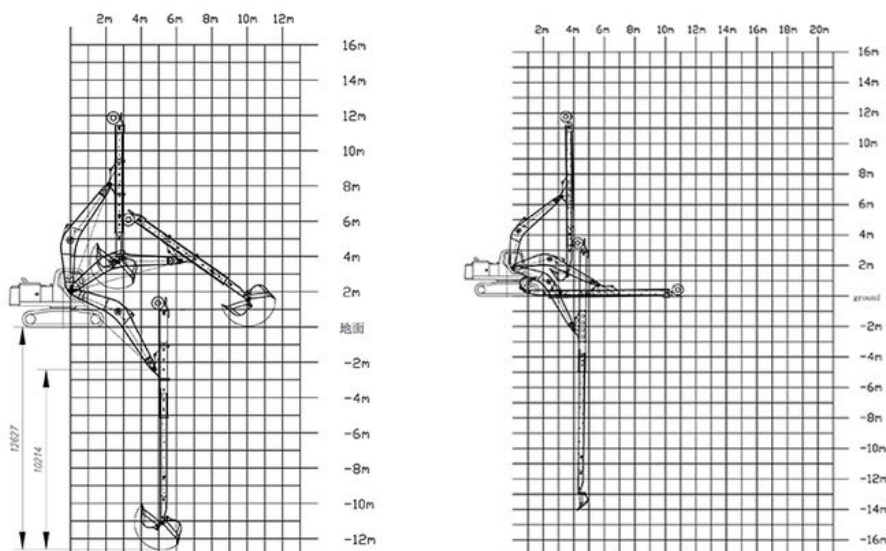
We feature an intuitive quick connect system that enables operators to switch attachments quickly and efficiently. This capability of excavator telescopic boom telescopic arm saves valuable time on the job site, allowing for seamless transitions between different tasks without hassle.



Specifications of one set of telescopic excavator:

Excavator Model (ton)	Bucket Capacity (cbm)	Bucket Cylinder	Digging Depth (m)
6T	0.2	6T	6
10-12T	0.2	6T	10
20-27T	0.4	20T	12
30-36T	1	30T	12
20-27T	0.4-0.6	20T	14
24-27T	0.8	30T	14
30-36T	1	35T	14
30-36T	0.8	30T	14
30-36T	1	35T	15
24-28T	0.8	30T	15
24-28T	0.4	20T	16
30-36T	0.8	22T	16
45-50T	1.2	35T	16

Model drawing of telescopic boom arm are as follow:



Use Cases of our excavator telescopic arm dipper stick:

- * Useful
- * High efficiency
- * Longer service life-span



Customer Reviews of our excavator telescopic boom:

Feedback from Clients



from Jonson:
the telescopic boom is suitable for
digging caisson. excellent
performance.



from Ryon:
deeper digging depth. work
effectively. nice service



from Ton:
Very excellent telescopic boom.
on my excavator suitably. very
good job



from Cris:
safe and balanced. premium
excavator boom. perfect

WIA: +86 13822325403

Call to Action



Sales Manager

Manufacturer of Excavator Arm and Boom

Whatsapp: +86 13822325403

Email: aria@excavatorboomarm.com
13822325403@163.com

Web: www.excavatorlongarm.com



Zhonghe Machinery is a big Manufacturer of Excavator Long Reach Boom And Telescopic Arm **Any interest,**

Welcome to contact Aria--sales manager of Zhonghe Machinery.

Whatsapp: wa.me/+8613822325403

Email: aria@excavatorboomarm.com

13822325403@163.com

Website link: www.excavatorlongarm.com

#longreacharmforexcavator #longexcavatorboom #longreachboom #excavator #excavation #longexcavatorboom
#excavatorarm #longboomexcavator #longreachboomexcavator #longboomexcavatorforsale



Jiangmen Kaiping Zhonghe Machinery Manufacturing Co., Ltd



+86 13822325403



aria@excavatorboomarm.com



excavatorlongarm.com

9 Huancui West Road, Cuishanhu New Area, Kaiping City, Guangdong Province, China