



Telescopic Excavator Hydraulic Telescoping Excavator Telescopic Arm

Our Product Introduction

Basic Information

- Place of Origin: Guangdong Province, China
- Brand Name: Kaiping Zhonghe Machinery Manufacturing Co. Ltd
- Certification: CE, Patents, ISO
- Model Number: Excavator Telescopic Arm 09
- Minimum Order Quantity: 1 set / piece
- Price: USD 199.00-USD8999.00
- Packaging Details: bubble or wooden case / others
- Delivery Time: 5-20 days
- Payment Terms: T/T, L/C or others as you request
- Supply Ability: 5 sets per week



16m 18m

Product Specification

- Material: LG700
- Digging Depth(m): 10m 12m 14m 16m 18m 20m
- Suitable Excavator (ton): 10ton To 60ton
- Color: Red, Yellow, Blue White Customized
- OEM/ODM: YES
- After-sales Service: YES
- Warranty: YES
- High Efficiency: YES



More Images



for more products please visit us on excavatorlongarm.com

Product Description

Excavator Telescopic Boom Telescopic Arm Excavator Telescopic Arm for Excavator

Introduction of one set of excavator telescopic boom:





Brief Overview of one set of telescopic arm for excavator:

The excavator telescopic arm is a versatile and innovative attachment designed to enhance the functionality of traditional excavators. Its primary purpose is to extend the reach and versatility of the machine, allowing operators to access hard-to-reach areas, perform deeper excavations, and handle a variety of tasks with greater ease.

With its adjustable length, telescopic arm for excavator significantly increases the operational range of the excavator, making it ideal for tasks such as digging, lifting, and placing materials in confined spaces or elevated positions. This enhanced reach not only improves efficiency but also reduces the need for repositioning the excavator, saving time and labor on job sites. Whether in construction, landscaping, or utility work, the excavator telescopic arm transforms the excavator into a more powerful and adaptable tool, maximizing productivity and performance.

Key Features of one set of excavator section telescopic arm:

Feature 1: The adjustable reach of the excavator telescopic arm allows for extension and retraction, enabling operators to customize the arm's length according to the specific task at hand.

Feature 2: The excavator telescopic arm is designed with a robust construction that increases its lifting capacity compared to standard arms.

Feature 3: Constructed from high-strength materials, telescopic arm for excavator is built to withstand harsh working conditions and heavy usage. This durability not only enhances the telescopic arm's longevity but also reduces the frequency of maintenance and repairs, leading to lower operational costs over time.



The front end is designed to be curved, greater digging force

Bearing part with multi-layer reinforced





The pivot end is reinforced with multiple layers to withstand greater excavation forces

The exposed bucket cylinder can be replaced without disassembling arm, which is convenient for maintenance



The reel adopts enlarged spring piece

Benefits of hydraulic telescoping excavator:

User Benefits of telescopic arm for excavator:

1. Increased Accessibility

Excavator telescopic boom extends the reach of the excavator, allowing operators to access hard-to-reach areas without needing to reposition the entire machine. This improved accessibility means users can work in tight spaces or elevated areas efficiently, reducing the time and effort required for tasks.

2. Enhanced Efficiency

By enabling deeper and more precise digging, telescopic arm for excavator minimizes the need for multiple machines or labor-intensive manual work. This efficiency not only speeds up project completion but also reduces labor costs, allowing users to complete jobs faster and more economically.

3. Improved Safety

The ability to operate from a distance with the extended boom enhances safety for operators and crew members. It reduces the risk of accidents by allowing operators to maintain a safe distance from potential hazards, such as falling debris or unstable ground.

Unique Selling Proposition: What sets this product apart from competitors?

Innovative Design

Our telescopic arm for excavator features a cutting-edge design that maximizes reach while maintaining stability and control. The sleek profile reduces drag and enhances maneuverability, making it easier to navigate tight spaces.

Superior Material Quality

Constructed from high-grade materials, telescopic excavator is engineered for durability and longevity. This robust construction withstands harsh conditions and heavy usage, outperforming competitors that use lower-quality materials.

Advanced Hydraulic System

Our advanced hydraulic system provides smoother operation and faster response times. This technology allows for precise movements, making telescopic arm for sale ideal for delicate tasks and ensuring optimal performance in various applications.

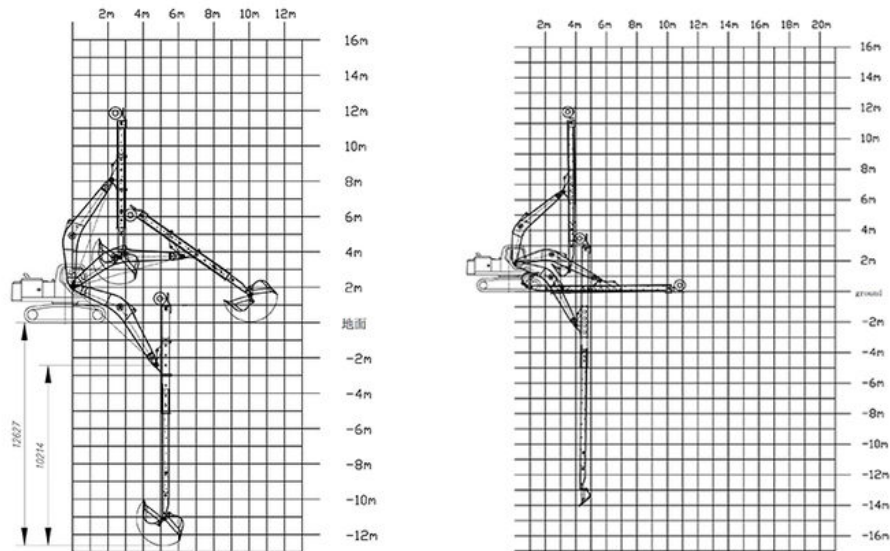
User-Friendly Quick Connect System

We offer an intuitive quick connect system that enables operators to switch attachments rapidly and efficiently. This feature saves valuable time on the job site, allowing for seamless transitions between different tasks without hassle.

Specifications of one set of excavator telescopic arm:

Excavator Model(ton)	Bucket Capacity(cbm)	Bucket Cylinder	Digging Depth(m)
6T	0.2	6T	6
10-12T	0.2	6T	10
20-27T	0.4	20T	12
30-36T	1	30T	12
20-27T	0.4-0.6	20T	14
24-27T	0.8	30T	14
30-36T	1	35T	14
30-36T	0.8	30T	14
30-36T	1	35T	15
24-28T	0.8	30T	15
24-28T	0.4	20T	16
30-36T	0.8	22T	16
45-50T	1.2	35T	16

Model drawing of telescopic arm for excavator are as follow:



Use Cases of our excavator telescopic arm:

- * Useful
- * High efficiency
- * Longer service life-span





Customer Reviews:

Feedback from Clients



from Jonson:
the telescopic boom is suitable for
digging caisson. excellent
performance.



from Ryon:
deeper digging depth. work
effectively. nice service



from Ton:
Very excellent telescopic boom.
on my excavator suitably. very
good job



from Cris:
safe and balanced. premium
excavator boom. perfect

WIA: +86 13822325403

Call to Action



Sales Manager

Manufacturer of Excavator Arm and Boom

Whatsapp: +86 13822325403

Email: aria@excavatorboomarm.com
13822325403@163.com

Web: www.excavatorlongarm.com



Zhonghe Machinery is a big Manufacturer of Excavator telescopic arm

Any interest,

Welcome to contact Aria--sales manager of Zhonghe Machinery.

Whatsapp: wa.me/+8613822325403

Email: aria@excavatorboomarm.com

13822325403@163.com

Website link: www.excavatorlongarm.com

#longreacharmforexcavator #longexcavatorboom #longreachboom #excavator #excavation #longexcavatorboom
#excavatorarm #longboomexcavator #longreachboomexcavator #longboomexcavatorforsale



Jiangmen Kaiping Zhonghe Machinery Manufacturing Co., Ltd



+86 13822325403



aria@excavatorboomarm.com



excavatorlongarm.com

9 Huancui West Road, Cuishanhu New Area, Kaiping City, Guangdong Province, China