



Telescopic Arm for Excavator 14m 16m Dig Deep Pits

Our Product Introduction

for more products please visit us on excavatorlongarm.com

Basic Information

- Place of Origin: Guangdong Province, China
- Brand Name: Kaiping Zhonghe Machinery Manufacturing Co. Ltd
- Certification: CE, ISO, Patent
- Model Number: Excavator Telescopic Arm 007
- Minimum Order Quantity: 1 set / piece
- Price: USD 199.00-USD18999.00
- Packaging Details: bubble / wooden cases/ others
- Delivery Time: 5-25/works
- Payment Terms: T/T, L/C
- Supply Ability: 5 sets per week



Product Specification

- Material: LG700
- Digging Depth(m): 12m 14m 16m 18m 20m
- High Efficiency: Yes
- Longer Service Life-span: Yes
- OEM / ODM: Yes
- Warranty: 6 Months
- After-sales Service: Yes
- Premium: Yes
- Highlight: excavator telescopic arm 14m,
excavator telescopic arm 16m,
telescopic arm for deep pits



More Images



Product Description

Introduction of one set of telescopic arm for excavator:

* Working environment: digging deep pits, house foundations, ect.

* Suitable excavator brands: Hitachi, Komatsu, Sanny, Kato, etc

Introducing our premium telescopic arm for excavators, designed to elevate your construction and excavation projects to new heights. This state-of-the-art attachment offers unparalleled versatility and reach, allowing operators to tackle a wider range of tasks with ease. Engineered from high-strength materials, the telescopic arm for excavator ensures durability and reliability, even in the most demanding environments.

With its innovative design, this telescopic boom excavator provides extended reach and precise maneuverability, making it ideal for digging, lifting, and material handling in tight spaces. Whether you're working on residential landscaping, large-scale construction, or demolition projects, this attachment enhances your excavator's capabilities, increasing productivity and efficiency.

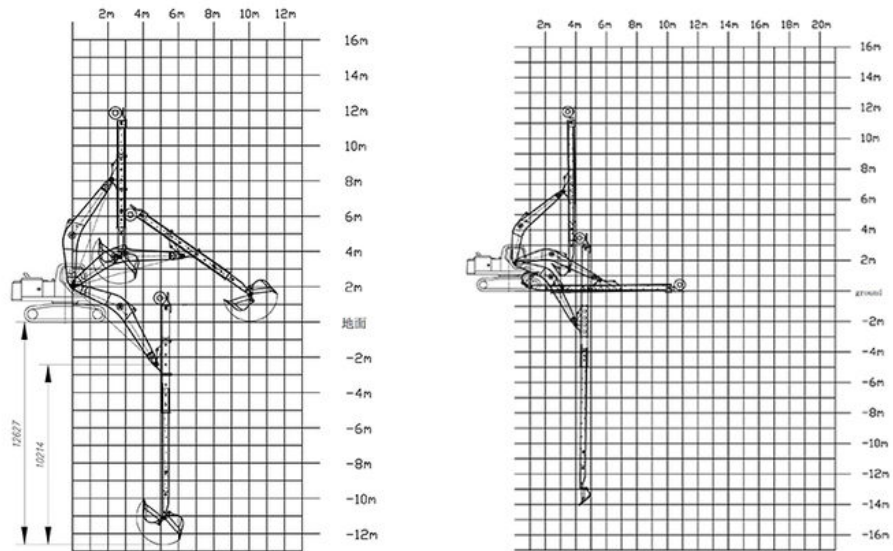
Installation is straightforward, and compatibility with various excavator models means you can maximize your investment without the need for extensive modifications. Experience the difference in performance and precision with our telescopic arm for sale, designed to help you get the job done faster and more effectively. Elevate your excavation game today and discover how our telescopic arm for excavator can transform your operations!



Features of one set of telescopic arm for excavator:

Suitable Excavator Model (ton)	Maximum Digging Depth (m)
6T	6m
20-36T	14m
24-36T	15m

Model drawings are as follow:



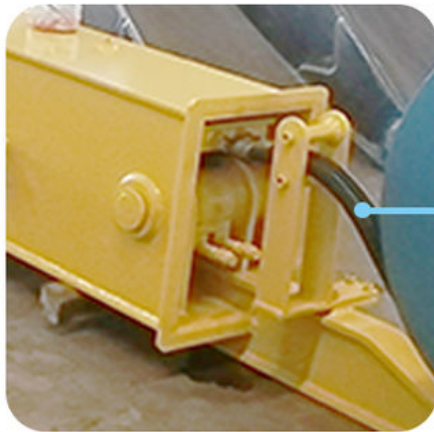
Welcome to send your excavator model to us! Suitable length and model drawings will be sent soon.

Benefits of one set of hydraulic telescoping excavator:





Enlarged spring piece
High Effective
Not prone to failure



Four-layer steel wire
high pressure hose
More durable



The front part is curved
Enlarge the digging
force
Digging effective
is increased.



The whole plate is inserted



Durable
Longer life-span



Add two blocks
on cylinder head



Reduce vibration



Double oil seal
design



Avoid oil leakage

Extended Reach

The telescoping design allows for greater reach, enabling operators to access hard-to-reach areas without repositioning the entire excavator. With telescopic excavator, the excavator can reach digging depth 14m 16m 18m 20m.

Increased Versatility

Suitable for a wide range of tasks, including digging, lifting, and material handling, making it an ideal choice for various job sites. Our telescopic excavator is very suitable for digging deep pits, house foundations etc.

Enhanced Precision

The hydraulic system provides smooth and precise control, improving accuracy during operation and reducing the risk of damage to surrounding structures. Our telescopic excavator is made of lighter and stronger material LG700 which enable it to reach deeply and with lower load on the excavators.

Improved Efficiency

By minimizing the need for repositioning, the telescoping arm for excavators allows for faster completion of tasks, boosting overall productivity.

Call to Action



Sales Manager

Manufacturer of Excavator Arm and Boom

Whatsapp: +86 13822325403

Email: aria@excavatorboomarm.com
13822325403@163.com

Web: www.excavatorlongarm.com



Welcome Perks Await.

Zhonghe Machinery is a big Manufacturer of Excavator telescopic arm

Any interest,

Welcome to contact Aria--sales manager of Zhonghe Machinery.

Whatsapp: wa.me/+8613822325403

Email: aria@excavatorboomarm.com

13822325403@163.com

Website link: www.excavatorlongarm.com

#longreacharmforexcavator #longexcavatorboom #longreachboom #excavator #excavation #longexcavatorboom
#excavatorarm #longboomexcavator #longreachboomexcavator #longboomexcavatorforsale



Jiangmen Kaiping Zhonghe Machinery Manufacturing Co., Ltd



+86 13822325403



aria@excavatorboomarm.com



excavatorlongarm.com

9 Huancui West Road, Cuishanhu New Area, Kaiping City, Guangdong Province, China