



25m Long Reach Boom Excavator Two Section Telescopic Arm for Sale

Our Product Introduction

for more products please visit us on excavatorlongarm.com

Basic Information

- Place of Origin: China
- Brand Name: ZH
- Certification: CE
- Model Number: JCB001
- Minimum Order Quantity: 1 SET
- Price: \$6000/set
- Packaging Details: Stretch film packaging
- Delivery Time: 20-30 working day
- Payment Terms: T/T
- Supply Ability: 600



Product Specification

- Brand: Zhonghe
- Application: Crawler Excavator
- Material: Q355+LG700
- Color: Customer's Request
- Warranty: 6 Months
- Machine Weight: 6-36T
- Type: Two-section Telescopic Arm
- Bucket Capacity: 0.9m³, 0.4-0.5CBM, 0.2-6m³
- Condition: New, 100% new, New Telescopic Arm
- After-sales Service Provided: Online Support, Video Technical Support
- Highlight: **25m long reach excavator boom, two section telescopic excavator arm, excavator telescopic boom with warranty**



More Images



Product Description

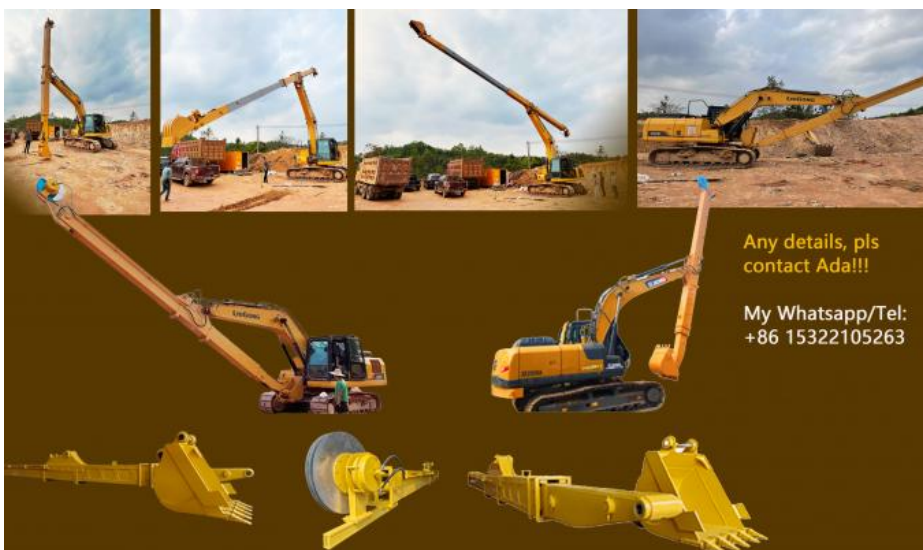
25m Long Reach Boom Excavator Two Section Telescopic Arm for Sale



What is an excavator telescopic arm

An excavator telescopic arm consists of a rigid main body, a sliding extension, a steel rope, and a hydraulic telescoping mechanism. Changing the number of sliding sections enables a customizable digging range and depth. When combined with a bucket, it facilitates deep excavation work for materials such as soil, sand, and coal.

The two-section boom is engineered using LG700 steel for high strength, while Q355B offers additional support for a lightweight build. Key characteristics:



Zhonghe Machinery Two-section Telescopic Arm

1. The telescopic cylinder adopts double oil seals, and the built-in slider reduces the vibration of the cylinder, avoids sagging due to gravity, improves the service life of the cylinder and reduces failures.
2. Bucket cylinder hose design avoids oil leakage caused by hose vibration, and the hose can be replaced without dismantling the arm, improving its service life.
3. Four-layer steel wire high pressure hose, more durable.
4. The exposed bucket cylinder can be replaced without disassembling arm, which is convenient for maintenance.



Two-section telescopic arm

1. Made of BS700 or Q690D material, offering a lighter weight and lower load on the main machine.
2. External maintenance access for the boom allows for telescopic cylinder replacement without disassembling the arm.
3. Optimized front design for carrying larger buckets and generating greater digging force.
4. Dual internal piping design prevents oil leakage from vibration, simplifies pipe replacement, and enables all components to be replaced without removing the boom.



What are the advantages of our telescopic arm?

22-ton bucket cylinder for superior performance

Enlarged spring plates in the reel system

Reinforced multi-layer bearings

LG700 steel box frame for optimal strength

Strengthened pivot point to withstand heavy excavation forces

High-Quality Steel Composition – Built from **reinforced steel**, achieving both strength and reduced mass.

Superior Depth Capacity – This arm provides **20 cm additional reach** over similar products.

Cylinder Vibration Control – A **dual-slider mechanism** maintains smooth operation and minimizes breakdowns.

Double-Layer Hose Shielding – Reduces movement, enhancing the longevity of the pipeline.

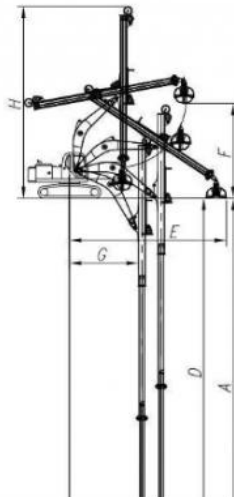
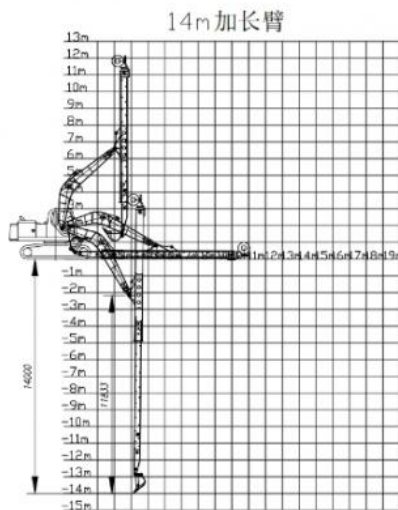
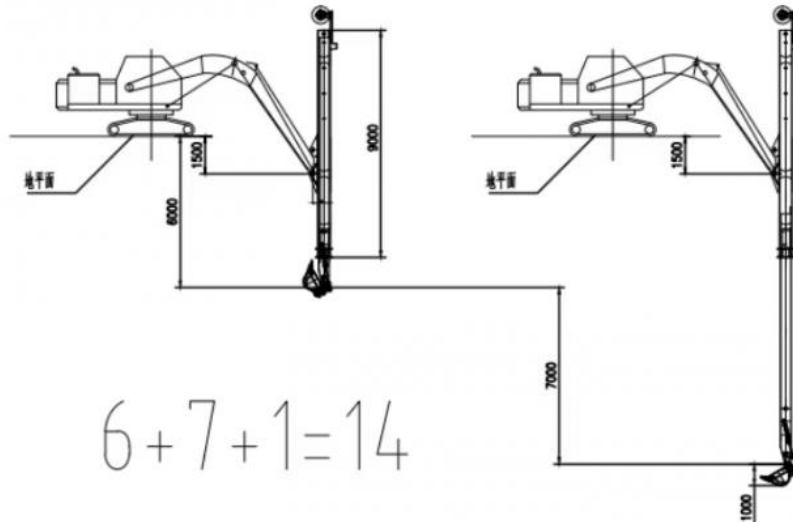
Convenient Maintenance Access – The **external bucket cylinder** ensures easy replacements and servicing.

Two Section Telescopic Arm Configuration

1. **A set of telescopic arm**
2. **Eight high-pressure hoses**

3. Nine pins
4. A standard bucket
5. A two-way foot switch
6. A bucket cylinder
7. A set Linkage

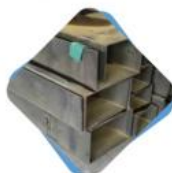
General Arrangement Drawing



25M-伸缩臂	
A.	最大垂直挖掘深度
B.	最大垂直深度挖掘半径
C.	最大垂直挖掘工作半径
D.	最大垂直挖掘深度
E.	最大垂直挖掘工作半径
F.	最大卸土高度
G.	最小回转半径
H.	最小回转半径是整机高度

Excavator (ton)	Max Depth (mm)	Effective Length (mm)	Bucket Capacity (cbm)	Cylinder (ton)	Cylinder (ton)
12-15	10000	8170	0.2	6	0
20-25	12000	8700	0.4	20	0
20-25	14000	10680	0.4	20	2 ton
30-35	16000	12080	0.6-0.8	22	1 ton

Advantages of telescopic arm



01

Using LG700/785 material, the overall plate strength is stronger and the arm is lighter, reducing the load of the excavator.



02

The unique design of the internally designed long cylinder makes the vibration of the cylinder a thing of the past. We add a slider inside the cylinder to prevent the cylinder from shaking when it expands and contracts. This not only reduces the failure rate of the cylinder, but also reduces the vibration of the pipeline.



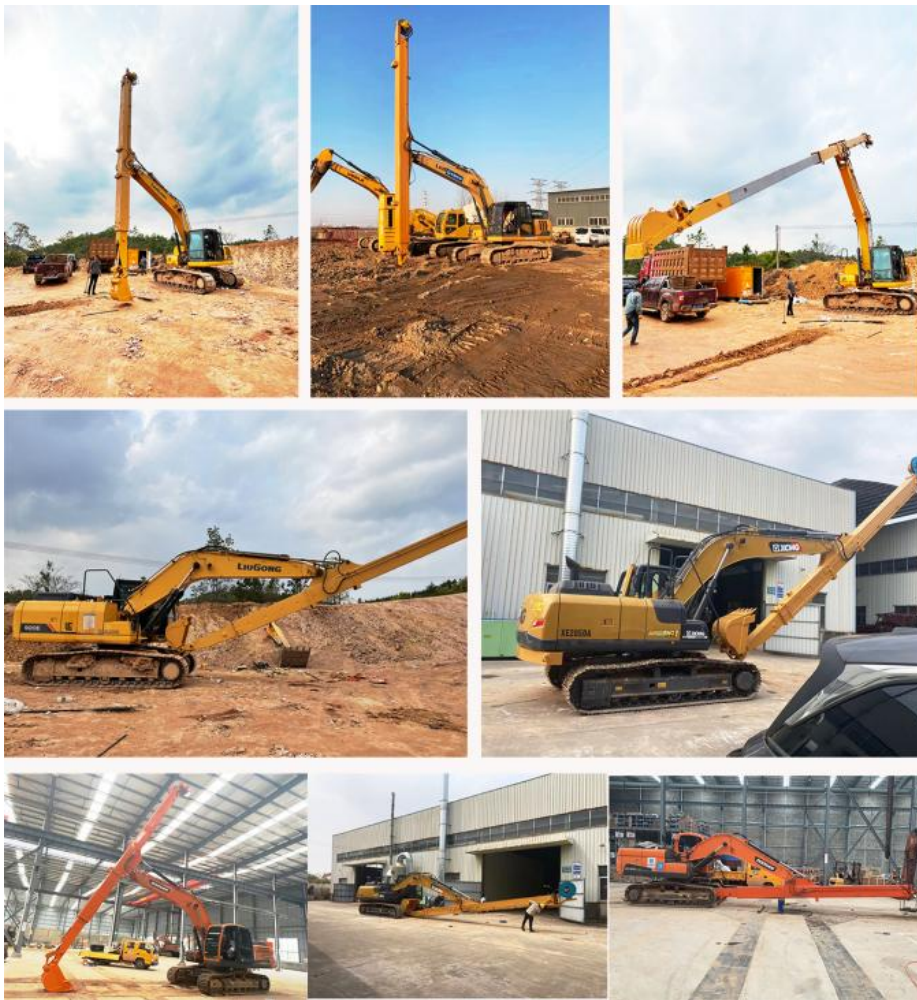
03

For telescopic iron pipes, we adopt a double-layer iron pipe design to reduce pipeline oil leakage caused by pipeline vibration and reduce the failure rate.



04

The bucket cylinder is placed outside the arm, and the cylinder and connecting rod assembly are replaced as a whole. Our maintenance is more convenient, and the bucket retraction angle for excavation is better.



Application of Two-section Telescopic Arm

Excavation Beyond Standard Depths – Ideal for deep foundation and mining projects.

Controlled Structure Removal – Enables precision demolition of elevated structures.

Compact Area Operations – Works effectively in space-constrained job sites.

River & Port Maintenance – Supports dredging and erosion control measures.

Industrial Bulk Handling – Transfers coal, sand, and other materials efficiently.

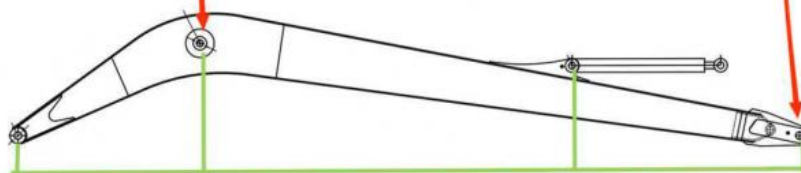
Agricultural & Forestry Work – Assists in lifting and transporting logs and crops.

High precision machine of Zhonghe Machinery Manufacturers

Double-sided boring lathe



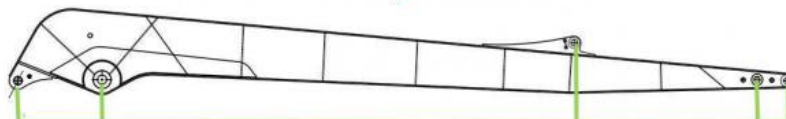
After the excavator boom and arm are assembled, the pins on the boom are drilled to ensure that the pins on the boom are parallel to each other and the cross section of the pin hole is perpendicular to the pin. The double-sided boring machine of the boom makes the hole position more accurate and the quality higher.



Make sure the cross section of the pin hole is perpendicular to the shaft.



Make sure the axis is parallel to the axis



Make sure the cross section of the pin hole is perpendicular to the shaft



Make sure the axis is parallel to the axis

Large, floor-mounted double-sided boring and milling lathe:

Increased Precision and Consistency: The double-sided boring and milling lathe enhances operational accuracy and consistency.

Post-Welding Process: After welding, the machine bores through the hole, ensuring the parallelism and verticality of the

shaft.

Main Responsibility: This machine is primarily used for post-welding boring of large and small arms and buckets to ensure accuracy.

Simultaneous Boring: The double-sided boring lathe performs boring on both sides at the same time, guaranteeing even accuracy.

About Zhonghe Machinery Company Profile:

Since 2018, Kaiping Zhonghe Machinery Co., Ltd. has been a reliable manufacturer of custom excavator boom arms and attachments. Operating from a 21,000m³ high-tech workshop in Kaiping, Guangdong, we leverage state-of-the-art machinery and an experienced workforce of 100+ experts, including 50 skilled welders, 30 senior engineers, and an R&D team with 10+ years of industry expertise and 100+ patents. Through strict production standards, cost-effective solutions, and a commitment to excellence, we produce up to 800 boom arms annually, serving a global market with high-quality products.



CE certification & Utility model patent certificates



Our products have been sold to more than 60 countries, and our transportation methods include sea transportation, land transportation, and air transportation. Our packaging is wooden box packaging or stretch film packaging. The goods will be packed before shipment and then loaded into the container to ensure the safety of the goods.

Packaging & Shipping



FAQ(Some frequently asked questions):

Q: Are you a manufacturer?

A: Zhonghe machinery offered a wide range of attachment parts for excavators and dozers. Such as long reach arm, demolition arm, telescopic arm, standard bucket, rock bucket, cleaning bucket, tilting bucket, etc. We know that the perfect combination of high-quality cast steel products and a moderate price is the key to the success.

Q: Is the length of the telescopic arm the total length or the digging depth?

A: The length of a two-stage telescopic arm refers to the digging depth. For example, a 14-meter telescopic arm means that the maximum digging depth is 14 meters, so it is called a 14-meter telescopic arm. The actual arm length is not only 14 meters.

Q: What material is the telescopic arm made of?

A: The arm tube of the telescopic arm is made of a690 or HG785 material, and the material of other parts is a355B material.

Q: What are your terms of payment?

A: We prefer T/T (50/50) through Ali Credit Insurance as a trial order.

Q: Are you always delivered on time?

A: We can't promise about the sea freight but what we can do is shorten our lead time while keeping the same quality level. So there will not be any problem even if the sea freight is delayed for a couple of days.

More details, contact Ada!!!

Whatsapp/Tel: [+86 15322105263](tel:+8615322105263)

E-mail: abby@excavatorboomarm.com

General Arrangement Drawing



Jiangmen Kaiping Zhonghe Machinery Manufacturing Co., Ltd



+86 13822325403



aria@excavatorboomarm.com



excavatorlongarm.com

9 Huancui West Road, Cuishanhu New Area, Kaiping City, Guangdong Province, China