



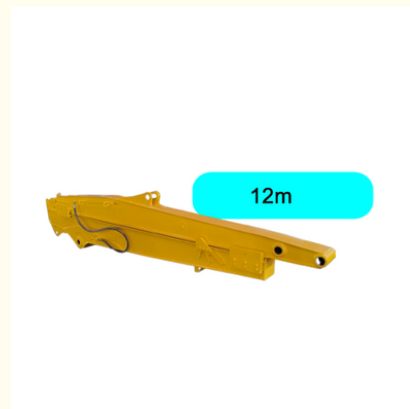
Telescopic Excavator Boom Q355B 8m-16m Digging Depth

Our Product Introduction

for more products please visit us on excavatorlongarm.com

Basic Information

- Place of Origin: Guangdong Province, China
- Brand Name: Kaiping Zhonghe Machinery Manufacturing Co. Ltd
- Certification: CE, patent, ISO
- Model Number: Telescopic excavator 09
- Minimum Order Quantity: 1 set / piece
- Price: USD 199.00-USD8999.00
- Packaging Details: bubble / wooden cases
- Delivery Time: 5-25/works
- Payment Terms: T/T, L/C
- Supply Ability: 15 sets per week



Product Specification

- Material: Q355B
- Warranty: 6 Moths
- Digging Depth(m): 8m 10m 12m 14m 16m
- Quality: High Quality
- Key Word: Telescopic Excavator
- Color: Customized
- Highlight: Telescopic excavator boom Q355B,
Excavator boom 8m digging depth,
Telescopic boom 16m excavator



More Images



Product Description

Product Overview of telescopic excavator:

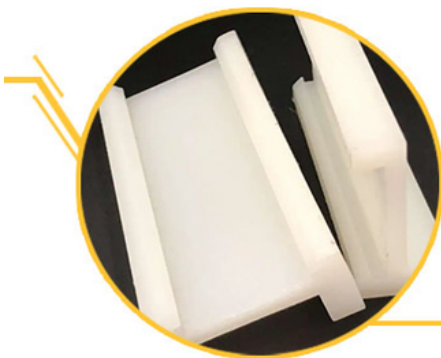
The excavator telescopic arm is designed to extend the reach and versatility of an excavator, allowing it to perform a wide range of digging, lifting, and handling tasks. Its ability to extend and retract provides operators with enhanced flexibility in accessing challenging or confined spaces.



Key Features of telescopic excavator:

ZHONGHE Sliding Arm

- Compact alternative to a larger model, capable of digging further, and with a significantly smaller footprint.
- Meets the need for powerful machines for deep excavation projects in confined areas.

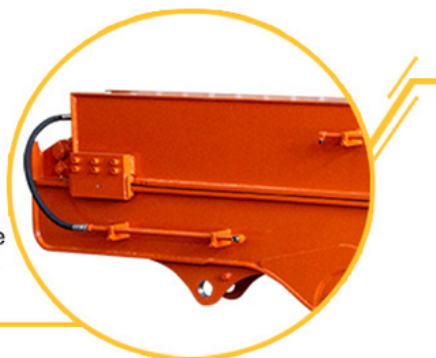


Easy to Maintain

ZHONGHE sliding arm adopt antiwear nylon sliding plates rather than traditional pulley, which can be replaced quickly and conveniently.

Robust Sliding Structure

1. The lower cover of the upper sliding arm and the upper cover of the lower fixing arm are both 20mm.
2. Cover plates are cut from a whole piece but not spliced, so as to be more firm and not easy to deform.

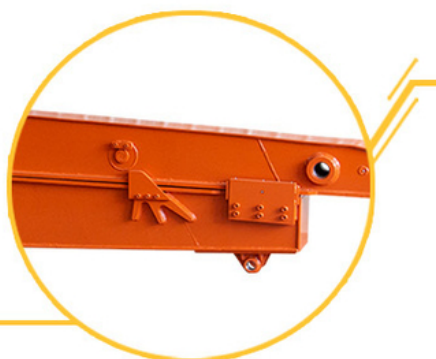


Avoid Oil Leakage

The double oil seal design for the built-in telescopic cylinder prevents hydraulic oil from leaking, prolongs the service life of the sliding cylinder.

Long Service Life

1. Double limit design of the sliding cylinder prevents cylinder jolting and overpulling.
2. Steel sliders are welded between the skateboards to resist wear.





01
Panel is cut by CNC plasma machine with less deformation

02
Tolerance within 5-10um, ensure the accuracy of hole

Production advantage

03
Environmentally friendly verified spraying room, professional and beautiful paint finish

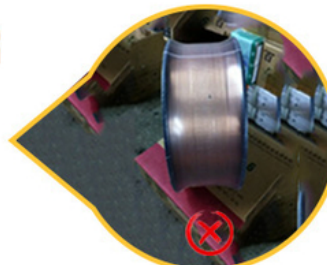
04
GMAW-Gas Metal Arc Welding



Ours-Goldenbridge

SOLDER

VS



Others



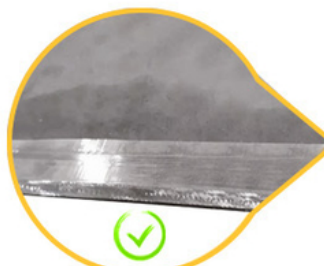
Ours-Ningbo connector

CONNECTORS

VS



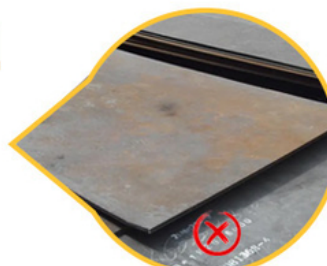
Others



Ours-Edge-mining

STEEL

VS



Others-No edge-mining

Extended Reach:

The telescopic arm can extend to significant lengths, often exceeding traditional excavator arms. This feature allows operators to access hard-to-reach areas, making it ideal for projects in tight spaces or for deep digging applications.

Enhanced Maneuverability:

Designed for flexibility, the telescopic arm can be easily retracted and extended, enabling precise control over digging and lifting operations. This maneuverability is crucial for working in confined areas, such as urban construction sites or around existing structures.

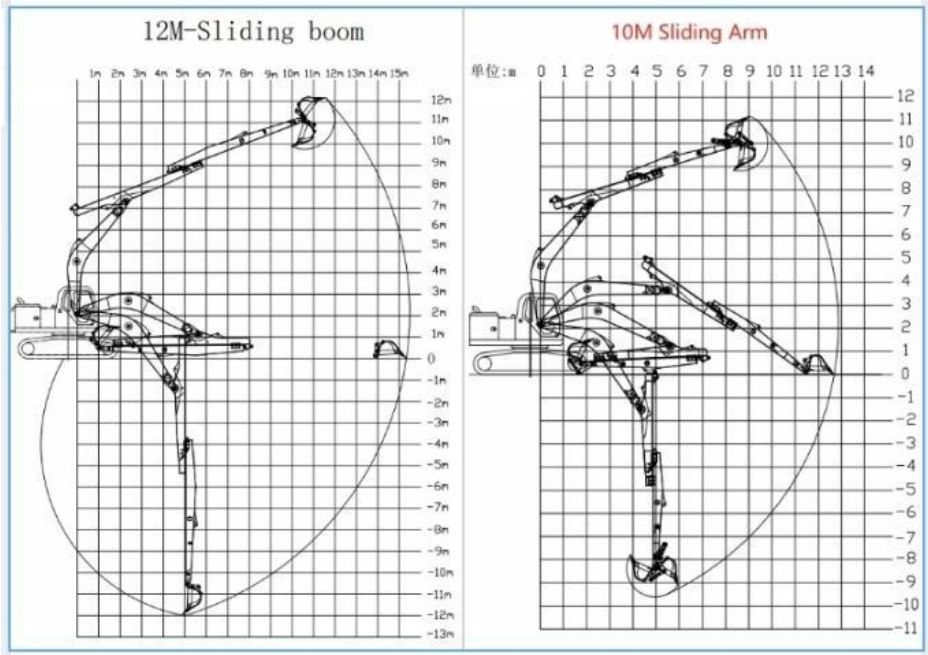
Robust Construction:

Made from high-strength materials, the telescopic arm for excavators is engineered to withstand heavy loads and challenging

working conditions. Its durable design ensures reliability and longevity, reducing maintenance needs and enhancing overall operational efficiency.

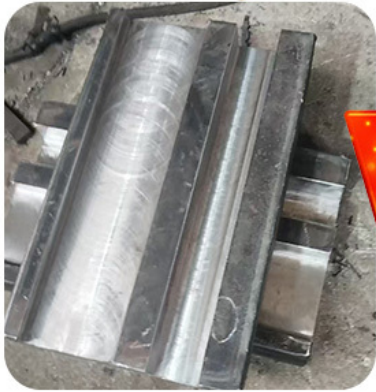
Specifications of one set of telescopic excavator:

Excavator Model(ton)	Bucket Capacity(cbm)	Digging Depth(m)
3-4T	0.1	4
6-8T	0.2	6
10-12T	0.35	8
20-27T	0.5-0.6	10
20-27T	0.45	12
30-36T	1.2	10
30-36T	1	12
30-36T	0.6	12



Benefits of one set of telescopic excavator:

The benefits of utilizing a telescopic excavator are numerous and significant. With its extended reach and enhanced maneuverability, this machine allows operators to tackle projects in tight spaces with ease, maximizing efficiency in urban environments or confined job sites. The robust construction ensures durability and reliability, reducing downtime and maintenance costs. Additionally, the ability to precisely control the telescopic arm for excavator's extension and retraction enables more accurate digging and lifting, improving overall productivity. As a result, a telescopic arm for excavator not only enhances operational capabilities but also contributes to cost savings and increased project turnaround times.



VS



Cut from one plate



stronger

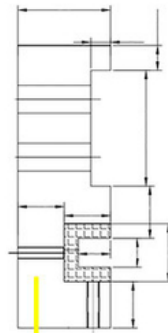


avoid deformation

Welded together

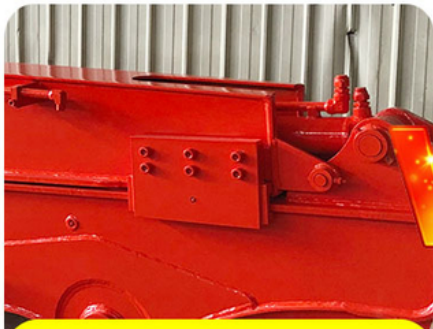


easy to crack



Thicken

Reduce cracking and failure rate



VS



Longer service life-span

Easy to fail and crack



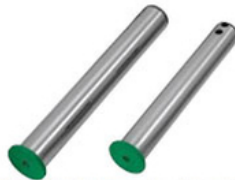
Double limit design
reduces cylinder over pulling
and jitter



Huge vibration
cylinder easy to fail



The pin is too
small, has a
short service
life, and does
not have
enough bearing
capacity.



The pin uses
the original pin
size and is
more sturdy.

Call to Action:

Welcome Perks Await.

Zhonghe Machinery is a big Manufacturer of Excavator sliding arm

Any interest,

Welcome to contact Aria--sales manager of Zhonghe Machinery.

Whatsapp: wa.me/+8613822325403

Email: aria@excavatorboomarm.com

13822325403@163.com

Website link: www.excavatorlongarm.com

#longreacharmforexcavator #longexcavatorboom #longreachboom #excavator #excavation #longexcavatorboom
#excavatorarm #longboomexcavator #longreachboomexcavator #longboomexcavatorforsale



Jiangmen Kaiping Zhonghe Machinery Manufacturing Co., Ltd



+86 13822325403



aria@excavatorboomarm.com



excavatorlongarm.com

9 Huancui West Road, Cuishanhu New Area, Kaiping City, Guangdong Province, China