



Excavator Telescopic Arm Top 1 High Quality Long Reach Longer

Our Product Introduction

for more products please visit us on excavatorlongarm.com

Basic Information

- Place of Origin: Guangdong Province, China
- Brand Name: Kaiping Zhonghe Machinery Manufacturing Co. Ltd
- Certification: CE, Patents, ISO
- Model Number: Excavator Telescopic Arm 009
- Minimum Order Quantity: 1 set / piece
- Price: USD 30-7800 EXW price
- Packaging Details: bubble / wooden cases/ others
- Delivery Time: 5-25/works
- Payment Terms: T/T, L/C or others as you request
- Supply Ability: 7 sets per week



Product Specification

- Features: High Effective And Longer Life-span
- Material: Shaogang Brand Q355B, Q690D
- Warranty: 6 Months For The Arm And Cylinder, 3 Months For The Bucket
- Easy Installation: Yes
- Easy Maintenance: Yes
- Cylinders: High Quality Improved Cylinders
- Test: Yes
- Key Word: Excavator Long Reach Telescopic Boom
- After-sales Service: Yes
- Digging Depth(m): 6m, 10m, 12m, 16m, 18m, 20m
- OEM / ODM: Available
- Color: Yellow, Red, White, Blue, Customized
- Patents: CE, ISO9001, Patents
- Painting: Premium Painting, Three Layers Paintings



More Images



Product Description

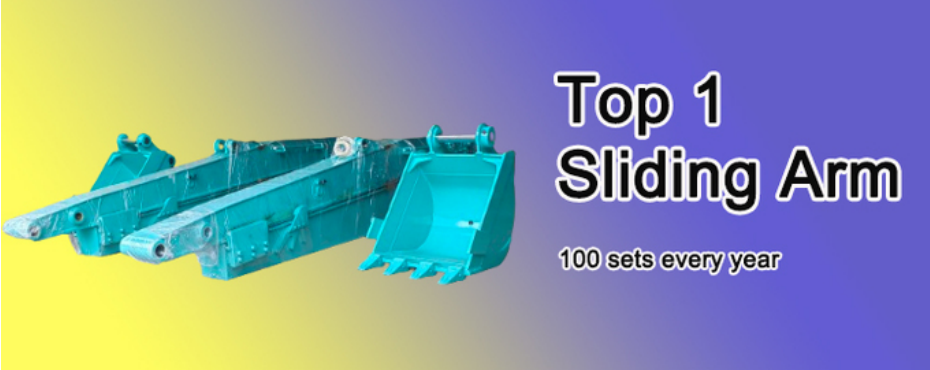
Our Product Introduction

for more products please visit us on excavatorlongarm.com

Top 1 Telescopic Arm for Excavator with Bucket for Construction Work

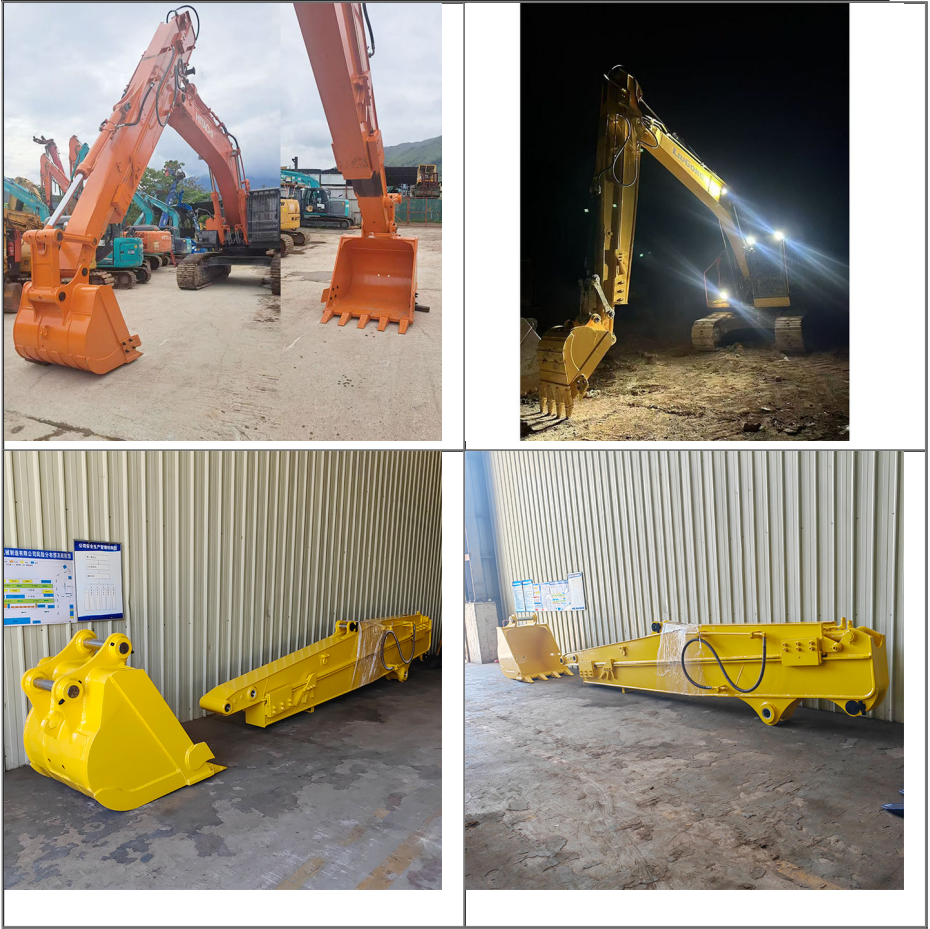
Brief introduction of our telescopic boom excavator:

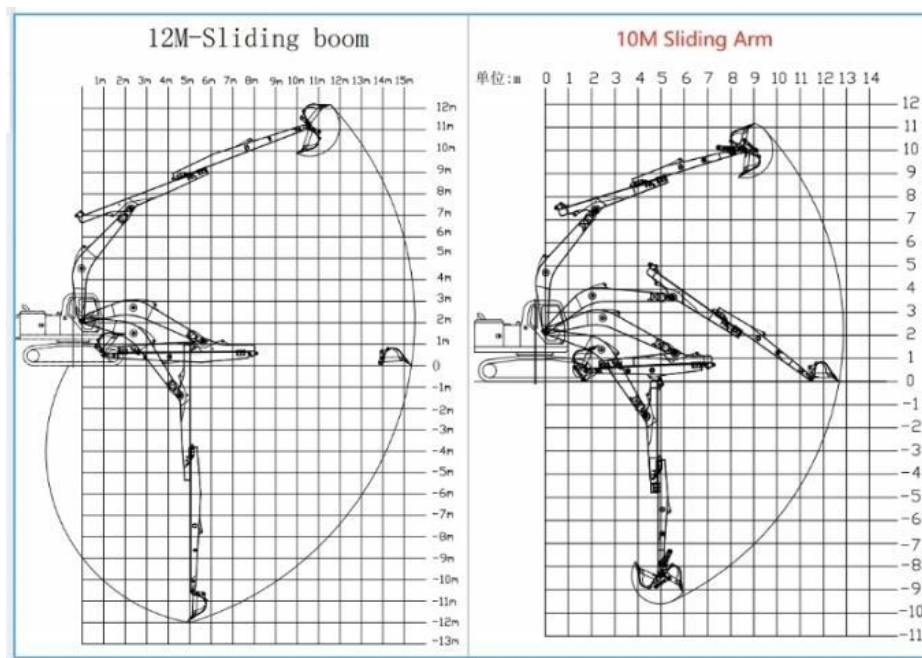
Our telescopic boom excavator is engineered for versatility and efficiency, making it an indispensable tool for construction and excavation projects. Featuring an advanced excavator telescopic arm telescopic boom, it allows for extended reach and enhanced maneuverability in tight spaces. With powerful hydraulics and a robust design, excavator with telescopic arm telescopic boom excels in various applications, from digging and lifting to material handling. Its operator-friendly controls and ergonomic design ensure optimal performance, safety, and comfort. Experience superior productivity and reliability with our state-of-the-art telescopic arm for excavator, tailored to meet the demands of modern construction.



Specifications details of telescopic arm for excavator:

Suitable Excavator Model (Ton)	Effective Length (mm)	Max Digging Depth (mm)	Max Radius (mm)	Bucket Capacity (cbm)
12-15T	5700	8000	10400	0.2-0.3
20-25T	9150	10000	13000	0.4-0.7
20-25T	11000	12000	15200	0.4-0.7
30-35T	11000	12000	15800	0.6-0.9
40-45T	12100	16000	19200	0.8-1.3





Details of one set of telescopic arm for sale:



The double limit design of the sliding cylinder prevents cylinder jolting and over-pulling.



Telescopic cylinder double oil seal design extends the service life of the cylinder



Cover plates are cut from a whole piece but not spliced, to be more firm and not easy to deform.

Built-in wear-resistant plastic slider, Easy to replace and maintain

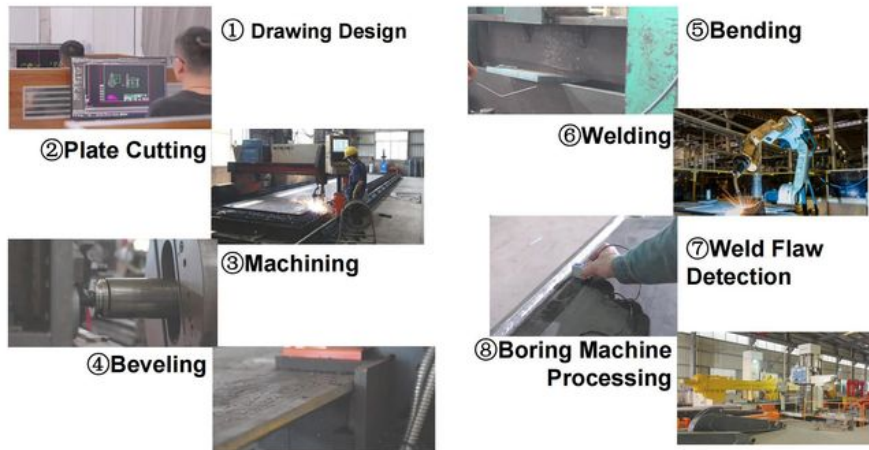


The tube has leakage holes to reduce water accumulation inside the arm tube, thereby reducing internal corrosion.

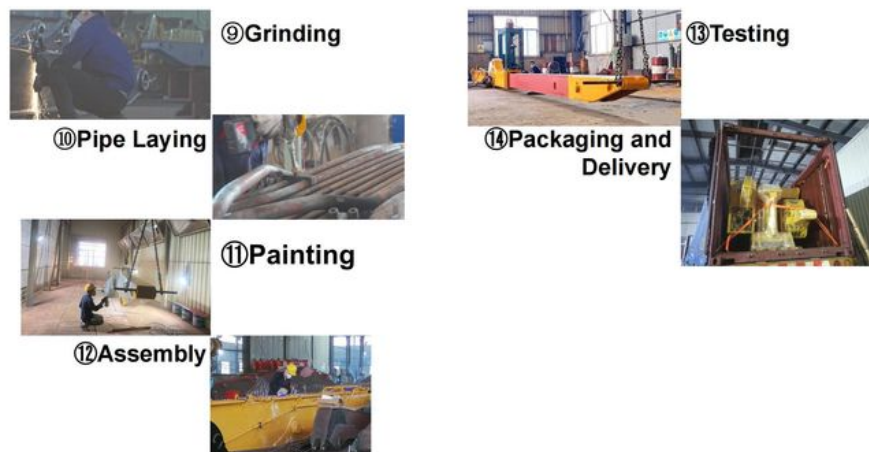
Production Details of telescopic excavator with bucket:

*** Standard *Professional *Under strict supervision *Full Tests before sending**

Product Manufacturing Process



Product Manufacturing Process



Key Stages

Material Preparation: The material preparation stage is crucial in our production process, laying the groundwork for both quality and efficiency. We source our raw materials from reliable suppliers who adhere to strict industry standards, guaranteeing consistency and dependability across our operations.

Manufacturing Process: The manufacturing phase is essential for transforming raw materials into high-quality finished products. This process is composed of meticulously organized steps aimed at maximizing efficiency and ensuring precision at every stage.

Quality Control: We perform quality checks at every step of production. Our director actively oversees these inspections to ensure that we consistently uphold our quality benchmarks.

Packaging: Each telescopic boom excavator is carefully packaged prior to shipment, ensuring that it reaches our clients in pristine condition, free from any damage.

Certifications we get:

* customer centric *professional *experienced *perfect design

4. Certifications



Exhibitions:

- * 2023 CHANGSHA INTERNATIONAL CONSTRUCTION EQUIPMENT EXHIBITION
- * 2024 BAUMA EXHIBITION
- * 2025 CHANGSHA INTERNATIONAL CONSTRUCTION EQUIPMENT EXHIBITION

Exhibitions We Attended

2023 CHANGSHA INTERNATIONAL CONSTRUCTION EQUIPMENT EXHIBITION



2024 Bauma Exhibition



2025 CHANGSHA INTERNATIONAL CONSTRUCTION EQUIPMENT EXHIBITION



Contact Us:

Kaiping Zhonghe Machinery is a big Manufacturer of Excavator Arms and Booms

Welcome to contact for a big discount!

Whatsapp: [+86 13822325403](https://wa.me/8613822325403)

Email: aria@excavatorboomarm.com
13822325403@163.com

Website link: www.excavatorlongarm.com

#excavator #excavator telescopic arm #excavator shorten arm shorten boom #excavator tunnel arm #tunnel boom #shorten arm #shorten boom #excavator long arm #excavator long boom #excavation #excavator sliding arm #excavator sliding boom #arm #boom #telescopic arm #long arm #long boom #big machine #heavy machine #bucket #long reach arm #long reach boom #shorten arm #shorten boom #excavator bucket #bucket #excavator pile arm #excavator pile boom #pile driving arm #pile driving boom #ripper



Jiangmen Kaiping Zhonghe Machinery Manufacturing Co., Ltd



+86 13822325403



aria@excavatorboomarm.com



excavatorlongarm.com

9 Huancui West Road, Cuishanhu New Area, Kaiping City, Guangdong Province, China