



Excavator Telescopic Arm Q355B Q690D Premium Performance

Our Product Introduction

for more products please visit us on excavatorlongarm.com

Basic Information

- Place of Origin: Guangdong Province, China
- Brand Name: Kaiping Zhonghe Machinery Manufacturing Co. Ltd
- Certification: CE, patent, ISO
- Model Number: Excavator Telescopic Arm 005
- Minimum Order Quantity: 1 set / piece
- Price: USD 30-7500 EXW price
- Packaging Details: bubble / wooden cases/ others
- Delivery Time: 5-25/works
- Payment Terms: T/T, L/C or others as you request
- Supply Ability: 7 sets per week



Product Specification

- Features: High Effective And Longer Life-span
- Cylinders: High Quality Improved Cylinders
- Digging Depth(m): 6m, 12m, 16m, 18m
- Painting: Premium Painting, Three Layers Paintings
- Key Word: Excavator Telescopic Arm
- Easy Maintenance: Yes
- Easy Installation: Yes
- Material: Shaogang Brand Q355B, Q690D
- Warranty: 6 Months For The Arm And Cylinder, 3 Months For The Bucket
- OEM / ODM: Available
- Color: Yellow, Red, White, Blue, Customized
- Patents: CE, ISO9001, Patents



More Images

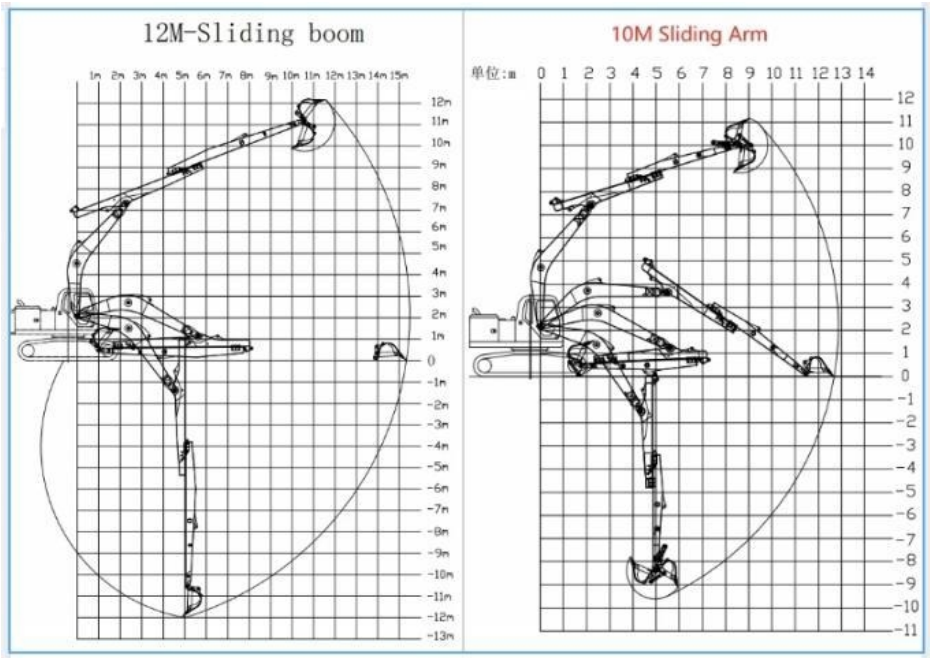


Product Description

Top 1 Excavator Telescopic Arm Q355B Q690D Better Design

Note: There are more than **400+ clients** who chose our excavator telescopic arm. Our excavator telescopic arm is installed on the excavator suitably and perfect. More than **100 sets** Telescopic Arm telescopic are sold every year. The good feedback of our excavator telescopic arm is up to **99.9%**.

Key word: High efficiency, Longer service life-span, Wear resistant, Easy installation, Easy maintenance



Excavator Model (Ton)	Effective Length (mm)	Max Depth (mm)	Max Radius (mm)	Bucket Capacity (cbm)
12-15T	5700	8000	10400	0.2-0.3
20-25T	9150	10000	13000	0.4-0.7
20-25T	11000	12000	15200	0.4-0.7
30-35T	11000	12000	15800	0.6-0.9
40-45T	12100	16000	19200	0.8-1.3

Welcome to send your excavator model to us for double check. Model drawings will be sent soon.

More excavator telescopic arm' show:



Our Product Introduction

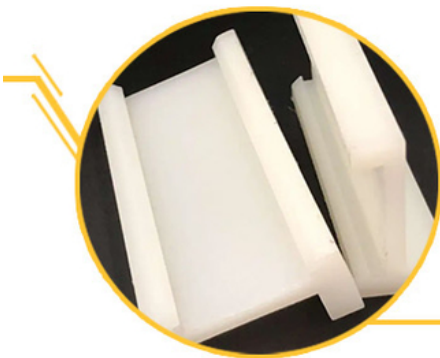
for more products please visit us on excavatorlongarm.com



Details of one set of our excavator telescopic arm with bucket for digging construction work:

ZHONGHE Sliding Arm

- Compact alternative to a larger model, capable of digging further, and with a significantly smaller footprint.
- Meets the need for powerful machines for deep excavation projects in confined areas.

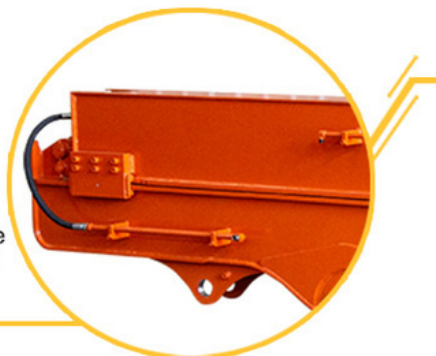


Easy to Maintain

ZHONGHE sliding arm adopt antiwear nylon sliding plates rather than traditional pulley, which can be replaced quickly and conveniently.

Robust Sliding Structure

1. The lower cover of the upper sliding arm and the upper cover of the lower fixing arm are both 20mm.
2. Cover plates are cut from a whole piece but not spliced, so as to be more firm and not easy to deform.



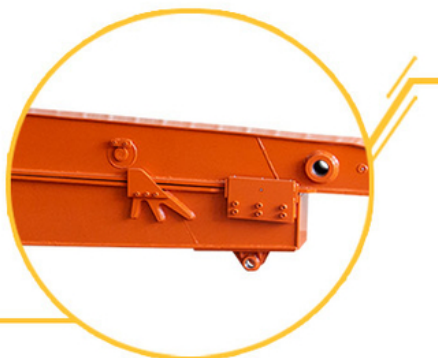


Avoid Oil Leakage

The double oil seal design for the built-in telescopic cylinder prevents hydraulic oil from leaking, prolongs the service life of the sliding cylinder.

Long Service Life

1. Double limit design of the sliding cylinder prevents cylinder jolting and overpulling.
2. Steel sliders are welded between the skateboards to resist wear.



01
Panel is cut by CNC plasma machine with less deformation

02
Tolerance within 5-10um, ensure the accuracy of hole

Production advantage

03
Environmentally friendly verified spraying room, professional and beautiful paint finish

04
GMAW-Gas Metal Arc Welding



Ours-Goldenbridge

SOLDER



Others



CONNECTORS

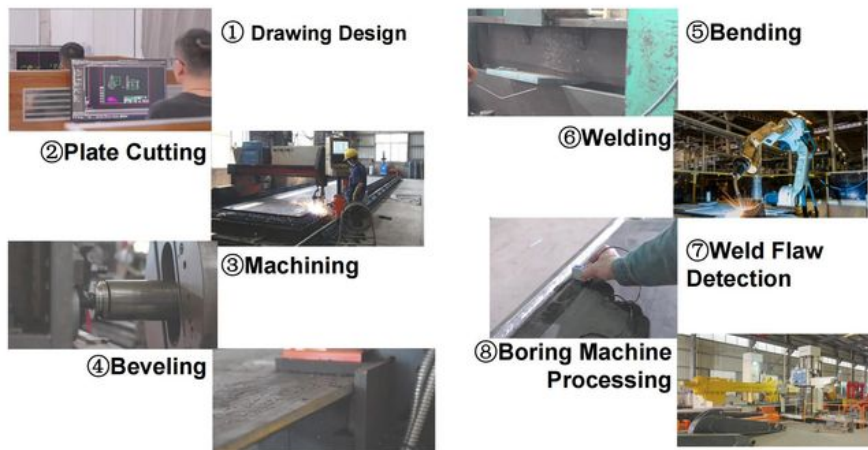




Production Details of our excavator telescopic arm with bucket:

Our company exemplifies professionalism through its investment in state-of-the-art machinery and a meticulously organized production line. Each stage of the process is optimized for efficiency, supported by a skilled workforce dedicated to quality. Rigorous quality control measures ensure that every set of excavator telescopic arm meets the highest standards, while a commitment to sustainability reflects the company's responsibility to the environment. Coupled with a strong focus on customer satisfaction and adherence to industry certifications, our company stands out as a leader in professional manufacturing.

Product Manufacturing Process



Product Manufacturing Process



⑨Grinding



⑬Testing

⑩Pipe Laying



⑭Packaging and Delivery



⑪Painting

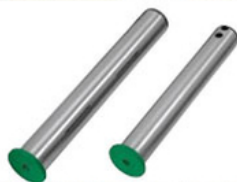
⑫Assembly



Why our excavator telescopic arm excel other suppliers?



The pin is too small, has a short service life, and does not have enough bearing capacity.



The pin uses the original pin size and is more sturdy.



its easy for the pipeline jumps up, causing damage to the pipeline.



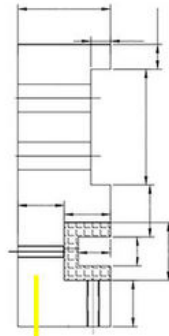
Welded on, less vibration and longer service life.



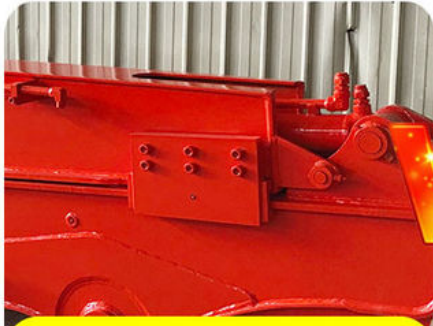
Double limit design
reduces cylinder over pulling
and jitter



Huge vibration
cylinder easy to fail



Thicken
Reduce cracking and failure rate



Longer service life-span



Easy to fail and crack

Certifications We have:
*CE *ISO9001 *PATENTS

4. Certifications



Exhibitions We Attended:

- * Professional: Our company has been worked in excavator arms and booms more than 8 years+.
- * Experienced: Each staffs has more than 6 years+ experienced in this field.

Exhibitions We Attended

2023 CHANGSHA INTERNATIONAL CONSTRUCTION EQUIPMENT EXHIBITION



2024 Bauma Exhibition



2025 CHANGSHA INTERNATIONAL CONSTRUCTION EQUIPMENT EXHIBITION



Contact Us: *24 Hours Available *Easy going

Welcome to contact for a big discount!

Whatsapp: [+86 13822325403](https://wa.me/8613822325403)

Email: aria@excavatorboomarm.com
13822325403@163.com

Website link: www.excavatorlongarm.com



Jiangmen Kaiping Zhonghe Machinery Manufacturing Co., Ltd



+86 13822325403



aria@excavatorboomarm.com



excavatorlongarm.com

9 Huancui West Road, Cuishanhu New Area, Kaiping City, Guangdong Province, China