

Excavator Telescopic Boom Telescopic Arm Q355B Better Welding

Our Product Introduction

for more products please visit us on excavatorlongarm.com

Basic Information

- Place of Origin: Guangdong Province, China
- Brand Name: Kaiping Zhonghe Machinery Manufacturing Co. Ltd
- Certification: CE, patent, ISO
- Model Number: Telescopic Arm for Sale 09
- Minimum Order Quantity: 1 set / piece
- Price: USD 30-7000 EXW price
- Packaging Details: bubble / wooden cases/ others
- Delivery Time: 5-25/works
- Payment Terms: T/T, L/C or others as you request
- Supply Ability: 7 sets per week

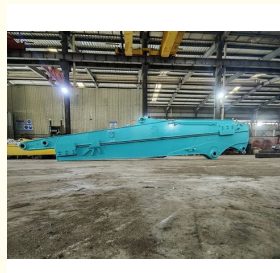


Product Specification

- Features: High Effective And Longer Life-span
- Cylinders: High Quality Improved Cylinders
- Digging Depth(m): 6m, 12m, 16m, 18m
- Material: Shaogang Brand Q355B
- Warranty: 6 Months For The Arm And Cylinder, 3 Months For The Bucket
- Easy Maintenance: Yes
- Easy Installation: Yes
- Key Word: Excavator Long Reach Telescopic Boom
- OEM / ODM: Available
- Color: Yellow, Red, White, Blue, Customized
- Patents: CE, ISO9001, Patents
- Painting: Premium Painting, Three Layers Paintings



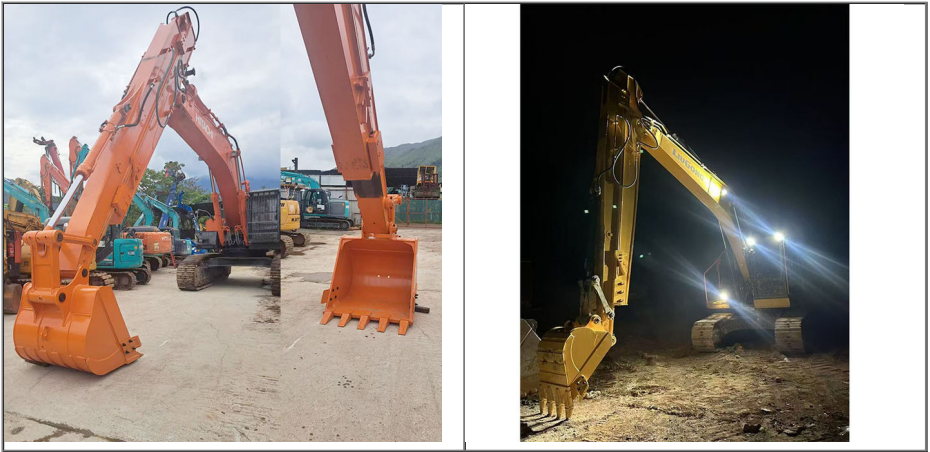
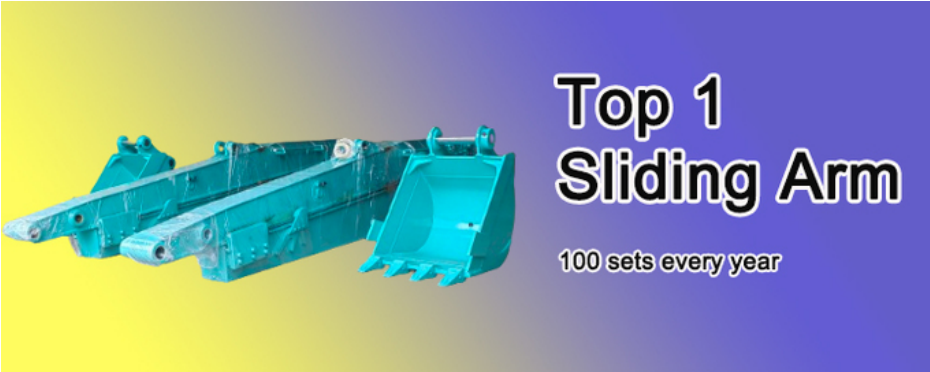
More Images



Product Description

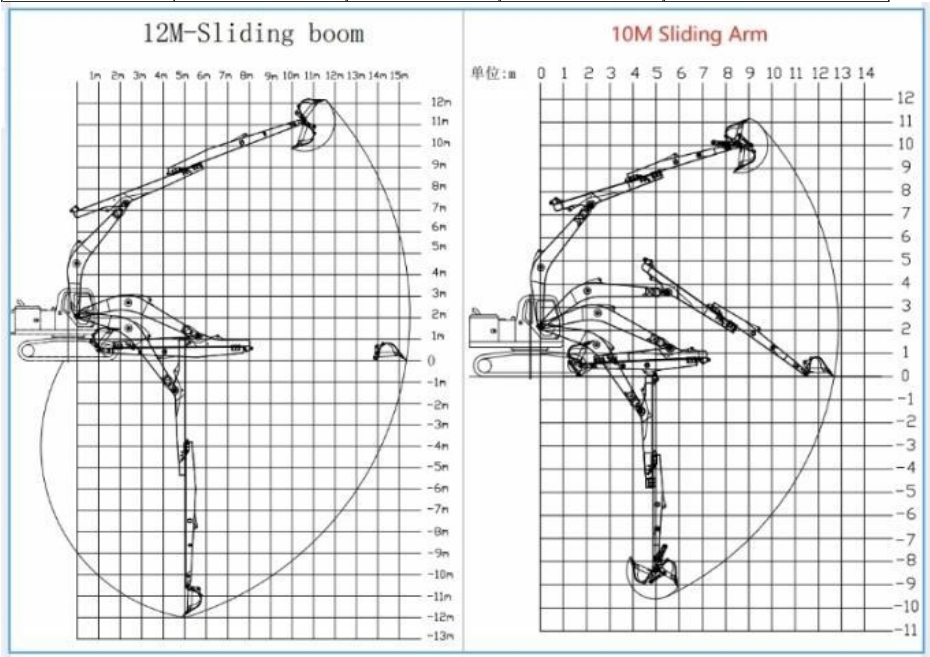
Top 1 Telescopic Arm telescopic Boom Arm for Digging

Note: There are more than **400+ clients** who chose Telescopic Arm telescopic Boom Arm. More than **100 sets** Telescopic Arm telescopic are sold every year. The good feedback of Telescopic Arm telescopic Boom Arm is up to **99%**.



Specifications details of Our Telescopic Arm telescopic Boom Arm:
* Model drawing of Telescopic Arm telescopic Boom Arm and suitable length will be sent soon.
Welcome to send the excavator model to us!

Excavator Model (Ton)	Effective Length (mm)	Max Depth (mm)	Max Radius (mm)	Bucket Capacity (cbm)
12-15T	5700	8000	10400	0.2-0.3
20-25T	9150	10000	13000	0.4-0.7
20-25T	11000	12000	15200	0.4-0.7
30-35T	11000	12000	15800	0.6-0.9
40-45T	12100	16000	19200	0.8-1.3



Details of one set of Telescopic Arm telescopic Boom Arm:

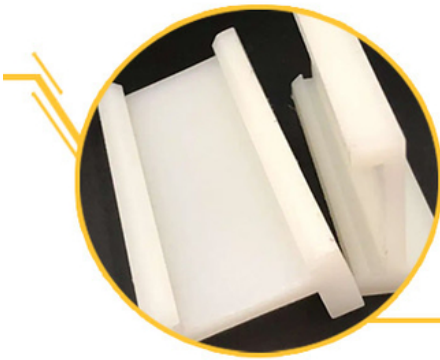


Our Product Introduction

for more products please visit us on excavatorlongarm.com

ZHONGHE Sliding Arm

- Compact alternative to a larger model, capable of digging further, and with a significantly smaller footprint.
- Meets the need for powerful machines for deep excavation projects in confined areas.

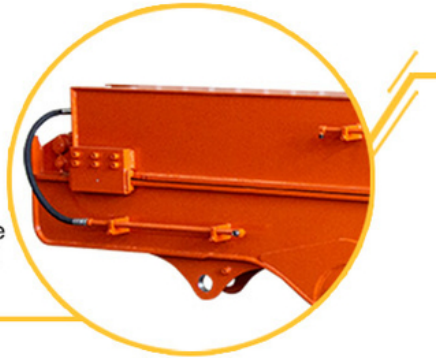


Easy to Maintain

ZHONGHE sliding arm adopt antiwear nylon sliding plates rather than traditional pulley, which can be replaced quickly and conveniently.

Robust Sliding Structure

1. The lower cover of the upper sliding arm and the upper cover of the lower fixing arm are both 20mm.
2. Cover plates are cut from a whole piece but not spliced, so as to be more firm and not easy to deform.



Avoid Oil Leakage

The double oil seal design for the built-in telescopic cylinder prevents hydraulic oil from leaking, prolongs the service life of the sliding cylinder.

Long Service Life

1. Double limit design of the sliding cylinder prevents cylinder jolting and overpulling.



2. Steel sliders are welded between the skateboards to resist wear.



01
Panel is cut by CNC plasma machine with less deformation

02
Tolerance within 5-10um, ensure the accuracy of hole

03
Environmentally friendly verified spraying room, professional and beautiful paint finish

04
GMAW-Gas Metal Arc Welding

Production advantage

SOLDER

VS

Ours-Goldenbridge  **Others** 

CONNECTORS

VS

Ours-Ningbo connector  **Others** 

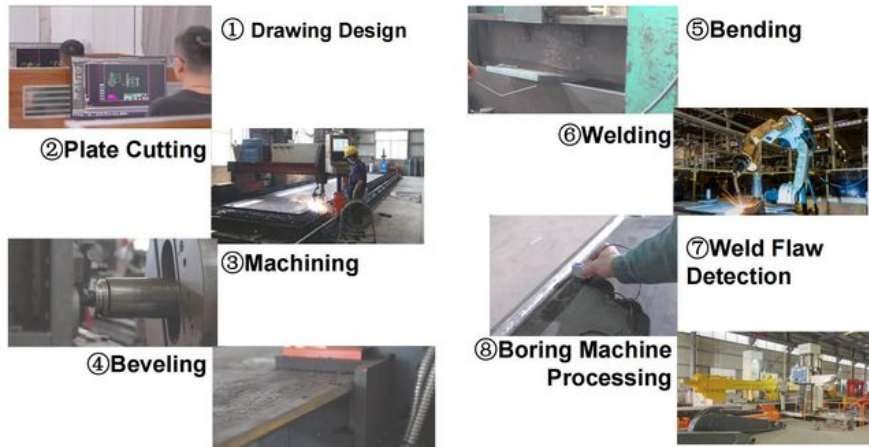
STEEL

VS

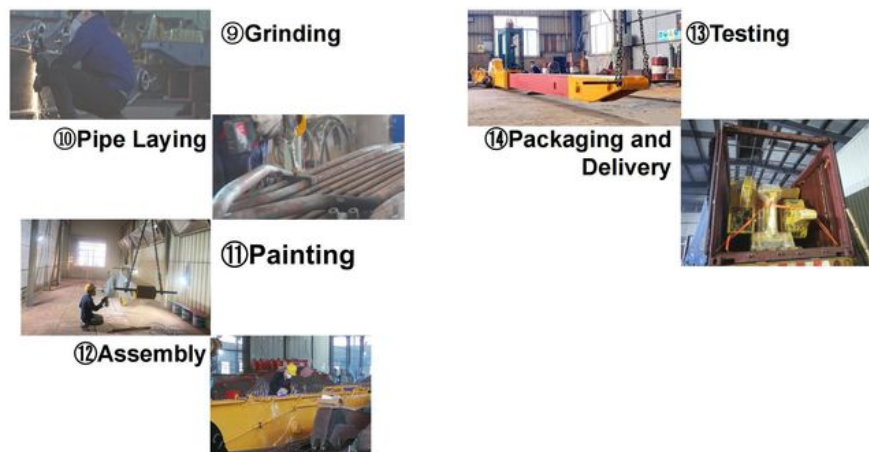
Ours-Edge-mining  **Others-No edge-mining** 

Production Details of Telescopic Arm telescopic Boom Arm:

Product Manufacturing Process



Product Manufacturing Process



Key Stages:

Material Preparation: The material preparation phase is essential in our production workflow, establishing a solid foundation for both quality and efficiency. We obtain our raw materials from trusted suppliers who comply with rigorous industry standards, ensuring that we achieve consistency and reliability throughout our operations.

Manufacturing Process: The manufacturing process plays a vital role in converting raw materials into high-quality finished products. This phase consists of carefully organized steps designed to maximize efficiency and maintain precision at every turn.

Quality Control: Quality checks are conducted at each stage of production. Our director regularly oversees these inspections to ensure that we consistently meet our quality standards.

Packaging: Each set of telescopic arm excavators is meticulously packaged before being dispatched to clients, ensuring that they arrive in perfect condition and free from any damage.

Certifications We have:

4. Certifications



Exhibition We Attended:

* Meet many friends

Exhibitions We Attended

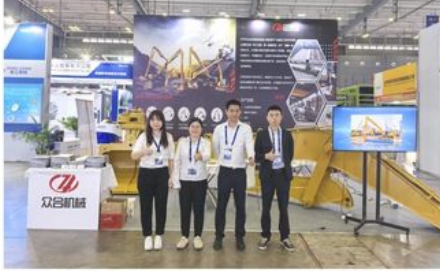
2023 CHANGSHA INTERNATIONAL CONSTRUCTION EQUIPMENT EXHIBITION



2024 Bauma Exhibition



2025 CHANGSHA INTERNATIONAL CONSTRUCTION EQUIPMENT EXHIBITION



Contact Us:

Kaiping Zhonghe Machinery is a big Manufacturer of Excavator Arms and Booms

Key word: long reach boom excavator, pile arm pile boom, demolition arm, shorten arm/ tunnel arm, rock arm rock boom, telescopic arm, etc

Welcome to contact for a big discount!

Whatsapp: [+86 13822325403](https://wa.me/8613822325403)

Email: aria@excavatorboomarm.com

13822325403@163.com

Website link: www.excavatorlongarm.com



Jiangmen Kaiping Zhonghe Machinery Manufacturing Co., Ltd



+86 13822325403



aria@excavatorboomarm.com



excavatorlongarm.com

9 Huancui West Road, Cuishanhu New Area, Kaiping City, Guangdong Province, China