



Telescopic Arm for Excavator Telescopic Boom Q355B Q690D

Our Product Introduction

for more products please visit us on excavatorlongarm.com

Basic Information

- Place of Origin: Guangdong Province, China
- Brand Name: Kaiping Zhonghe Machinery Manufacturing Co. Ltd
- Certification: CE, patent, ISO
- Model Number: Telescopic Boom for Excavator 04
- Minimum Order Quantity: 1 set / piece
- Price: USD 30-7000 EXW price
- Packaging Details: bubble / wooden cases/ others
- Delivery Time: 5-25/works
- Payment Terms: T/T, L/C or others as you request
- Supply Ability: 7 sets per week



Product Specification

- Features: High Effective And Longer Life-span
- Cylinders: High Quality Improved Cylinders
- Digging Depth(m): 6m, 12m, 16m, 18m
- Warranty: 6 Months For The Arm And Cylinder, 3 Months For The Bucket
- Key Word: Telescopic Arm For Sale
- OEM / ODM: Available
- Material: Q355B, High Quality Steel Material
- Easy Maintenance: Yes
- Color: Yellow, Red, White, Blue, Customized
- Patents: CE, ISO9001, Patents
- Painting: Premium Painting, Three Layers Paintings
- Easy Installation: Yes



More Images



Product Description

Telescopic Arm for Sale Premium Material Premium Design Telescopic Arm Excavator

Note: There are more than **400+ clients** who chose our telescopic arm excavator. More than **900 sets** telescopic arm for excavator are sold every year. The good feedback of telescopic arm for excavator is up to 99%.

Brief introduction of our telescopic arm excavator:

- * High efficiency. The loading cycle includes down and up: 20 seconds
- * Anti-vibration design: prolonger the service life-span of telescopic arm for excavator
- * With lower fail rate than other brands: Our telescopic arm for excavator stands out due to its robust design, which integrates high-quality materials: Shaogang Q355B and innovative engineering features. This thoughtful approach significantly reduces wear and stress, resulting in a lower failure rate. Extensive testing has validated its reliability across diverse conditions, ensuring user safety and satisfaction. With a proven track record of durability, telescopic arm for excavator not only meets but exceeds industry standards, making it a trustworthy choice for consumers.
- * Easy maintenance: Just need to add lubricant regularly.



Introduction of one set of hydraulic telescoping excavator:

- * Suitable for various excavator brands *easy intallation *suitable for digging house foundation pit, deep pit
- * Full test before sending to clients



Installation and feedback of one set of excavators boom dipper arm from clients:

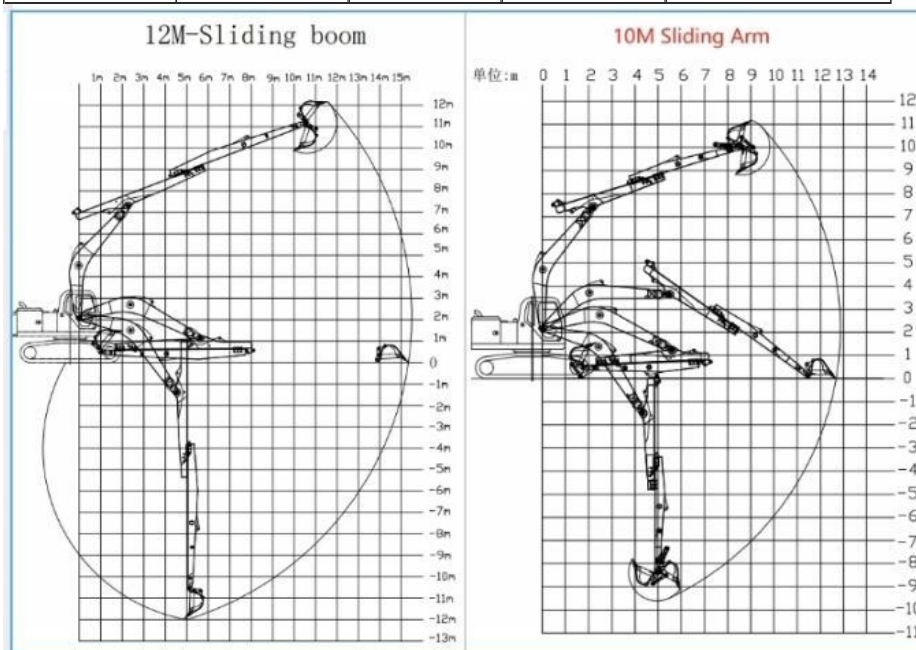
--	--



Specifications details of Our excavator long reach telescopic boom:

* Model drawing and suitable length will be sent soon. Welcome to send the excavator model to us!

Excavator Model (Ton)	Effective Length (mm)	Max Depth (mm)	Max Radius (mm)	Bucket Capacity (cbm)
12-15T	5700	8000	10400	0.2-0.3
20-25T	9150	10000	13000	0.4-0.7
20-25T	11000	12000	15200	0.4-0.7
30-35T	11000	12000	15800	0.6-0.9
40-45T	12100	16000	19200	0.8-1.3

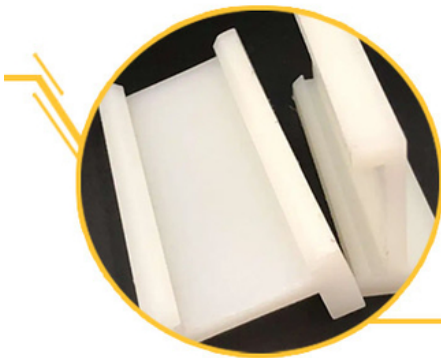


Details of one set of telescopic arm for excavator with bucket:

* Heavy duty * Compact design * Suitable for various working environment

ZHONGHE Sliding Arm

- Compact alternative to a larger model, capable of digging further, and with a significantly smaller footprint.
- Meets the need for powerful machines for deep excavation projects in confined areas.

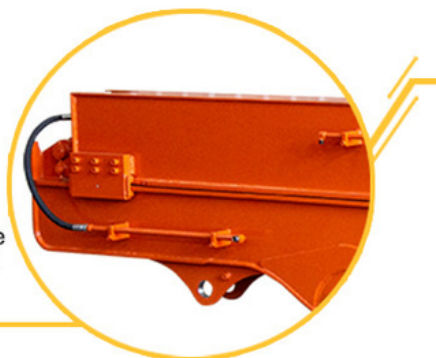


Easy to Maintain

ZHONGHE sliding arm adopt antiwear nylon sliding plates rather than traditional pulley, which can be replaced quickly and conveniently.

Robust Sliding Structure

1. The lower cover of the upper sliding arm and the upper cover of the lower fixing arm are both 20mm.
2. Cover plates are cut from a whole piece but not spliced, so as to be more firm and not easy to deform.

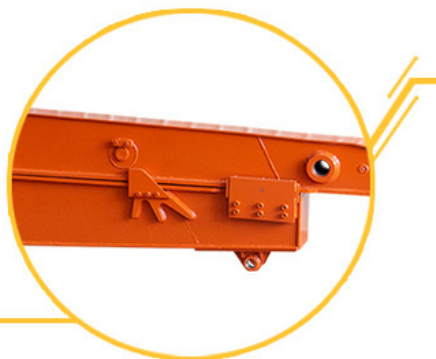


Avoid Oil Leakage

The double oil seal design for the built-in telescopic cylinder prevents hydraulic oil from leaking, prolongs the service life of the sliding cylinder.

Long Service Life

1. Double limit design of the sliding cylinder prevents cylinder jolting and overpulling.
2. Steel sliders are welded between the skateboards to resist wear.



01

Panel is cut by CNC plasma



Panel is cut by CNC plasma machine with less deformation

02

Tolerance within 5-10um, ensure the accuracy of hole

Production advantage

03

Environmentally friendly verified spraying room, professional and beautiful paint finish

04

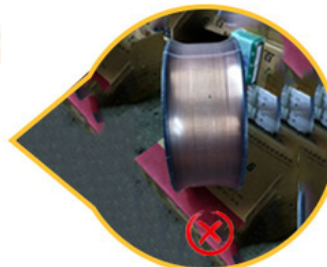
GMAW-Gas Metal Arc Welding



Ours-Goldenbridge

SOLDER

VS



Others



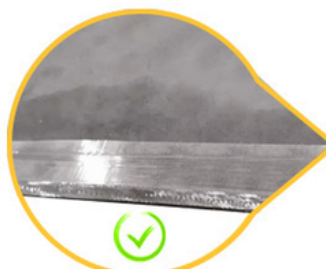
Ours-Ningbo connector

CONNECTORS

VS



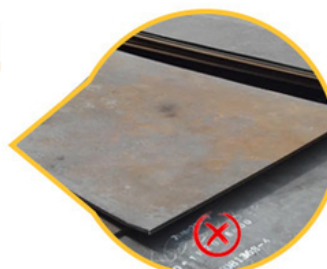
Others



Ours-Edge-mining

STEEL

VS



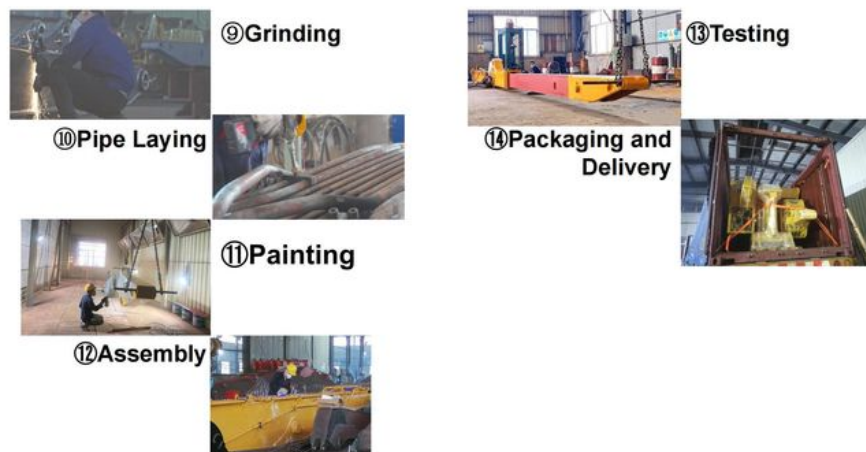
Others-No edge-mining

Production Details of excavator teledipper:

Product Manufacturing Process



Product Manufacturing Process



Key Stages:

Material Preparation: Material preparation is a critical stage in our production process, laying the foundation for quality and efficiency. We source our raw materials from reputable suppliers who adhere to strict industry standards, ensuring consistency and reliability.

Manufacturing Process: The manufacturing process is a critical phase in transforming raw materials into high-quality finished products. It involves a series of meticulously planned steps that ensure efficiency and precision.

Quality Control: Tests are carried out during every steps. Director will check the quality regularly.

Packaging: Every sets of telescopic arm excavator is well packaged before sending to clients. No damage

Certifications:

4. Certifications



* Experienced *Professional *Longer service life-span *High efficiency
Feedback from Clients Who Chose Our telescopic arm for excavators:

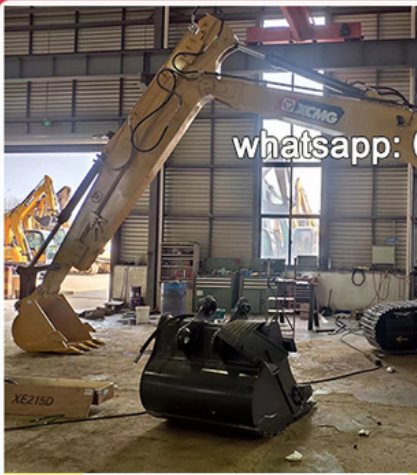
Feedback from Clients



from Tonny:
Very excellent telescopic boom.
on my pc 200 excavator suitably.



from Jason:
cool, the telescopic boom
works effectively. suitable for
digging.



from David:
very nice service.
The boom works very good.
safe and balanced operation



from Kevin:
suitable for digging caisson.
save energy.

whatsapp: 0086 13822325403

Contact Us:

Kaiping Zhonghe Machinery is a big Manufacturer of Excavator Arms and Booms

Key word: long reach boom excavator, pile arm pile boom, demolition arm, shorten arm/ tunnel arm, rock arm rock boom, telescopic arm, etc

Welcome to contact for a big discount!

Whatsapp: [+86 13822325403](https://wa.me/8613822325403)

Email: aria@excavatorboomarm.com

13822325403@163.com

Website link: www.excavatorlongarm.com



Jiangmen Kaiping Zhonghe Machinery Manufacturing Co., Ltd

+86 13822325403

aria@excavatorboomarm.com

excavatorlongarm.com

9 Huancui West Road, Cuishanhu New Area, Kaiping City, Guangdong Province, China