



Excavator Telescopic Arm Q355B Sliding Premium Long Cylinder

Our Product Introduction

for more products please visit us on excavatorlongarm.com

Basic Information

- Place of Origin: Guangdong Province, China
- Brand Name: Kaiping Zhonghe Machinery Manufacturing Co. Ltd
- Certification: CE, patent, ISO
- Model Number: Excavator telescopic boom sliding arm 098
- Minimum Order Quantity: 1 set / piece
- Price: USD 30-7000 EXW price
- Packaging Details: bubble / wooden cases/ others
- Delivery Time: 5-25/works
- Payment Terms: T/T, L/C or others as you request
- Supply Ability: 7 sets per week



Product Specification

- Features: High Effective And Longer Life-span
- Cylinders: High Quality Improved Cylinders
- Warranty: 6 Months For The Arm And Cylinder, 3 Months For The Bucket
- OEM / ODM: Available
- Material: Q355B, High Quality Steel Material
- Key Word: Telescopic Arm For Sale
- Digging Depth(m): 6m, 12m, 16m, 18m
- Color: Yellow, Red, White, Blue, Customized
- Patents: CE, ISO9001, Patents
- Painting: Premium Painting, Three Layers Paintings



More Images



Product Description

Excavator Telescopic Arm Q355B High Efficiency in Construction Work

Note: There are more than **400+ clients** who chose our excavator dipper arm sliding arm. More than **900 sets** telescopic boom excavator are sold every year. The good feedback is up to 99%.

Brief introduction of our telescopic boom excavator:

- * High efficiency. The loading cycle down and up: 15 seconds
- * Lower fail rate: The easy to wear parts can be changed once a year. The tube, cylinder, high pressure hoses are all enhanced which ensure longer service life-span.
- * Easy maintenance: Just need to add lubricant regularly.



Introduction of one set of Our excavator telescopic arm with bucket:

- * Relyed on a long cylinder to extend and retract the arm
- * Deeper digging depth than standard arm and standard boom
- * Smaller Swing Range
- * With longer service life-span than other suppliers

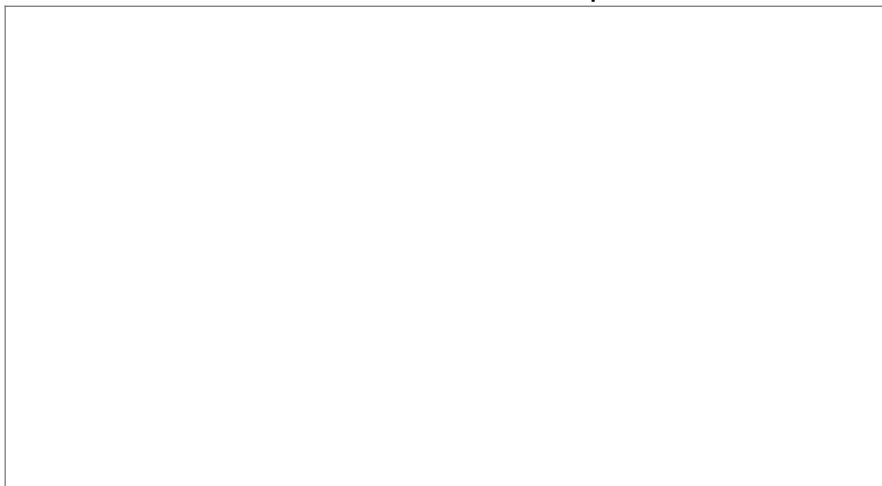


Telescopic Arm for Excavator is Suitable for Various Excavator Brands:

* Hitachi *Komatsu *Sany *Zoomlion etc



Installation and feedback of one set of excavator telescopic arm from clients:





* The original breaker pipeline control telescopic arm for excavator's the long cylinder

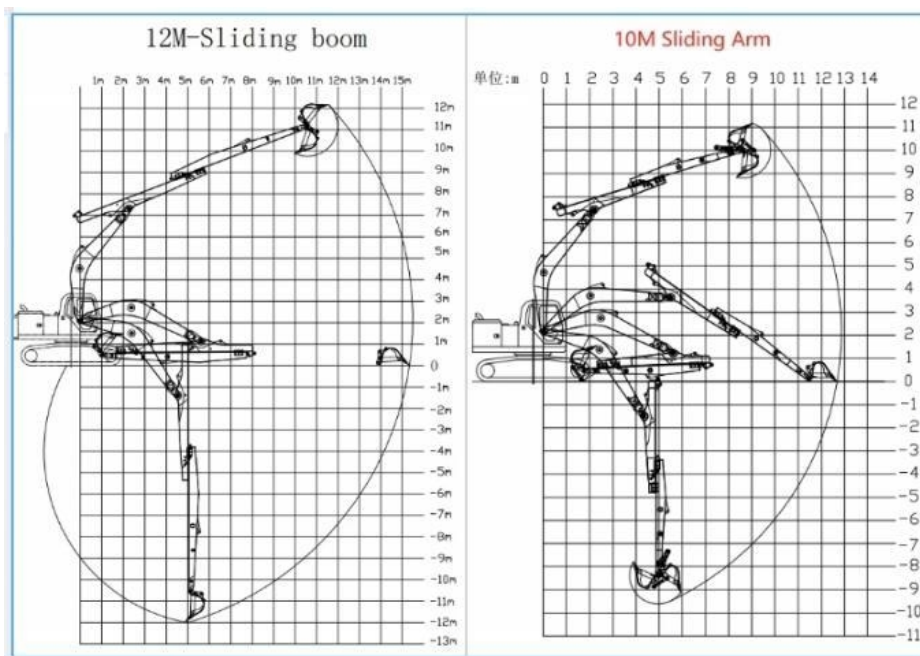
* The original bucket cylinder control telescopic arm for excavator's bucket cylinder

Key words: Easy install

Specifications of Our telescopic arm for excavator:

Excavator Model (Ton)	Effective Length (mm)	Max Depth (mm)	Max Radius (mm)	Bucket Capacity (cbm)
12-15T	5700	8000	10400	0.2-0.3
20-25T	9150	10000	13000	0.4-0.7
20-25T	11000	12000	15200	0.4-0.7
30-35T	11000	12000	15800	0.6-0.9
40-45T	12100	16000	19200	0.8-1.3

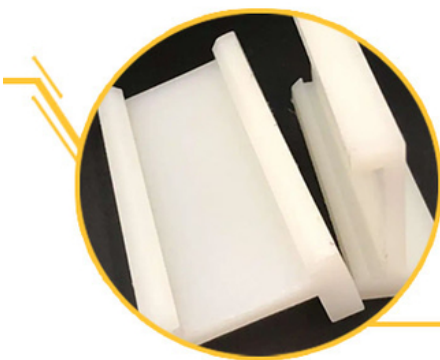
*Special Design * Full Tests *Longer Service Life-span * High working efficiency



Details of one set of telescopic arm for excavator:

ZHONGHE Sliding Arm

- Compact alternative to a larger model, capable of digging further, and with a significantly smaller footprint.
- Meets the need for powerful machines for deep excavation projects in confined areas.



Easy to Maintain

ZHONGHE sliding arm adopt antiwear nylon sliding plates rather than traditional pulley, which can be replaced quickly and conveniently.

Robust Sliding Structure

1. The lower cover of the upper sliding arm and the upper cover of the lower fixing arm are both 20mm.
2. Cover plates are cut from a whole piece



but not spliced, so as to be more firm and not easy to deform.



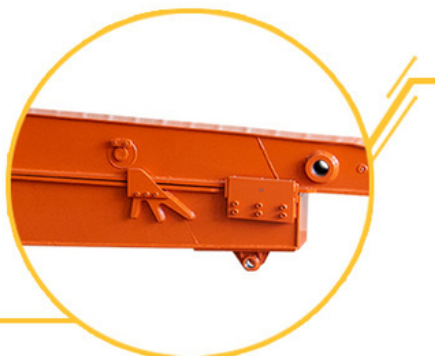


Avoid Oil Leakage

The double oil seal design for the built-in telescopic cylinder prevents hydraulic oil from leaking, prolongs the service life of the sliding cylinder.

Long Service Life

1. Double limit design of the sliding cylinder prevents cylinder jolting and overpulling.
2. Steel sliders are welded between the skateboards to resist wear.



Production advantage

01
Panel is cut by CNC plasma machine with less deformation

02
Tolerance within 5-10um, ensure the accuracy of hole

03
Environmentally friendly verified spraying room, professional and beautiful paint finish

04
GMAW-Gas Metal Arc Welding



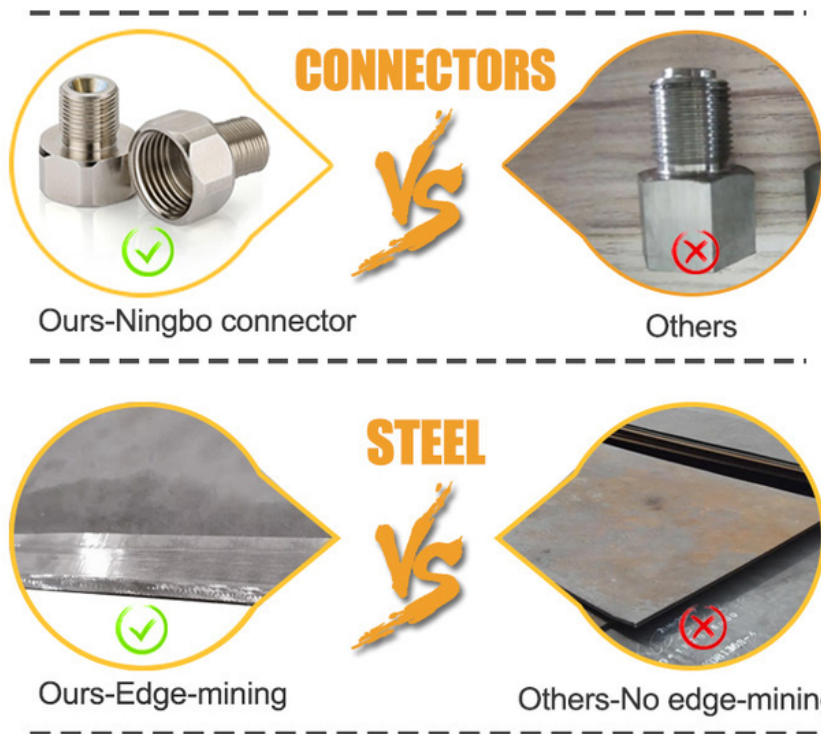
Ours-Goldenbridge

SOLDER

VS



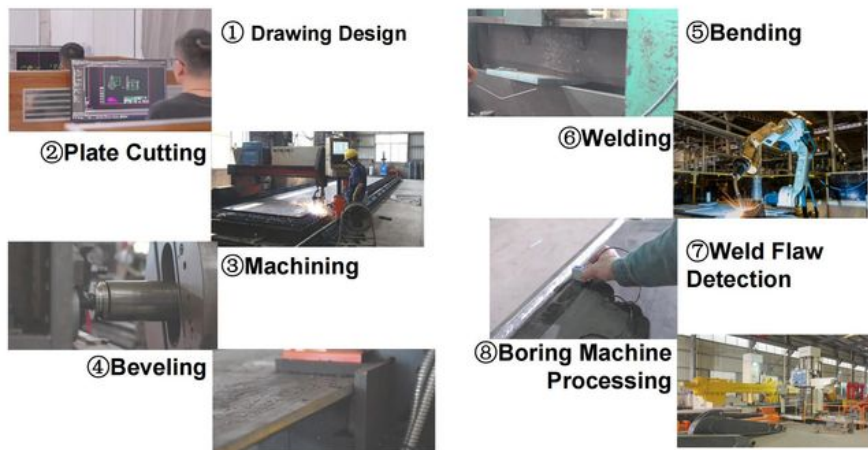
Others



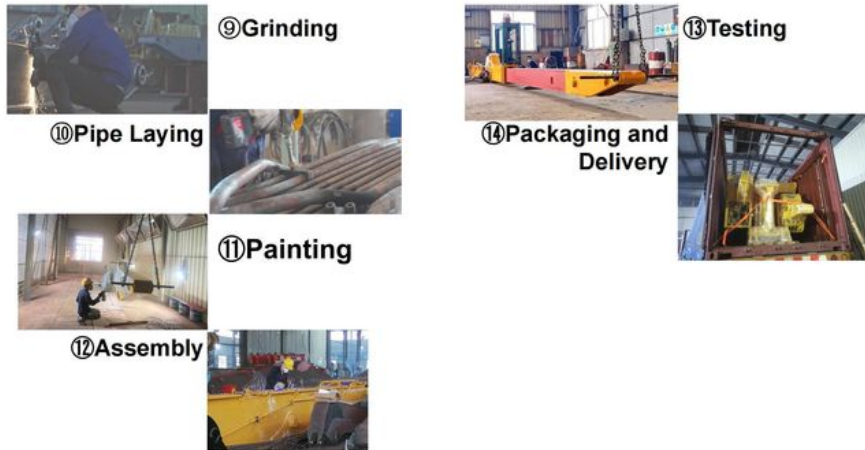
Production Details of telescopic arm for excavator:

- * High precision production machines: Large Floor-Standing Double-Sided Boring and Milling Lathe
- * Standard production line: from materials to design, every steps are full modeled and tested before production.
- * Strict tests and supervision: weld flaw detection assemble test regular test
- * More than 8 years experience

Product Manufacturing Process



Product Manufacturing Process



What's the purpose of steel beveling before welding?

Beveling prior to welding is essential for shaping the edges of metal surfaces into a sloped form, which promotes deeper penetration of the weld joint. This technique significantly boosts the strength and durability of the weld by enabling a more complete fusion of the materials, thereby minimizing the chances of flaws like cracks or insufficient welds. Furthermore, beveling contributes to the formation of a consistent weld bead and enhances the aesthetic quality of the final product. Proper edge preparation through beveling ensures a more effective and long-lasting welding process.

What's the purpose of processing by large double boring machine?

The primary goal of utilizing a large double boring machine is to ensure precise and efficient machining of sizeable workpieces, especially in scenarios where accurate hole placement and alignment are crucial. This machine's dual-sided functionality enables concurrent boring operations, which considerably shortens cycle times and boosts productivity. By leveraging cutting-edge technology, it guarantees consistent quality and dimensional accuracy, making it particularly suitable for demanding sectors like aerospace, automotive, and construction. In summary, the large double boring machine optimizes manufacturing workflows while upholding rigorous standards of precision.

What's the purpose of weld flaw detection of every welding?

The aim of weld flaw detection is to identify and evaluate imperfections or defects in welded joints that may jeopardize structural integrity and safety. Utilizing several non-destructive testing techniques, including ultrasonic, radiographic, and magnetic particle inspections, this process ensures that problems—such as cracks, voids, or incomplete fusion—are recognized promptly. This is vital for upholding rigorous quality standards in construction and manufacturing, ultimately averting failures that could result in expensive repairs, accidents, or safety risks.

Certifications of Our telescopic arm for excavator:

4. Certifications



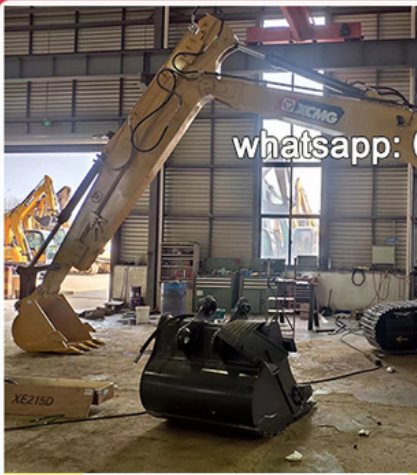
Feedback from Clients



from Tonny:
Very excellent telescopic boom.
on my pc 200 excavator suitably.



from Jason:
cool, the telescopic boom
works effectively. suitable for
digging.



from David:
very nice service.
The boom works very good.
safe and balanced operation



from Kevin:
suitable for digging caisson.
save energy.

whatsapp: 0086 13822325403

Contact Us:

Kaiping Zhonghe Machinery is a big Manufacturer of Excavator Arms and Booms

Key word: long reach boom excavator, pile arm pile boom, demolition arm, shorten arm/ tunnel arm, rock arm rock boom, telescopic arm, etc

Welcome to contact for a big discount!

Whatsapp: [+86 13822325403](https://wa.me/8613822325403)

Email: aria@excavatorboomarm.com

13822325403@163.com

Website link: www.excavatorlongarm.com



Jiangmen Kaiping Zhonghe Machinery Manufacturing Co., Ltd

+86 13822325403

aria@excavatorboomarm.com

excavatorlongarm.com

9 Huancui West Road, Cuishanhu New Area, Kaiping City, Guangdong Province, China